

SECTION 9: PARTS

Table & Column Breakdown

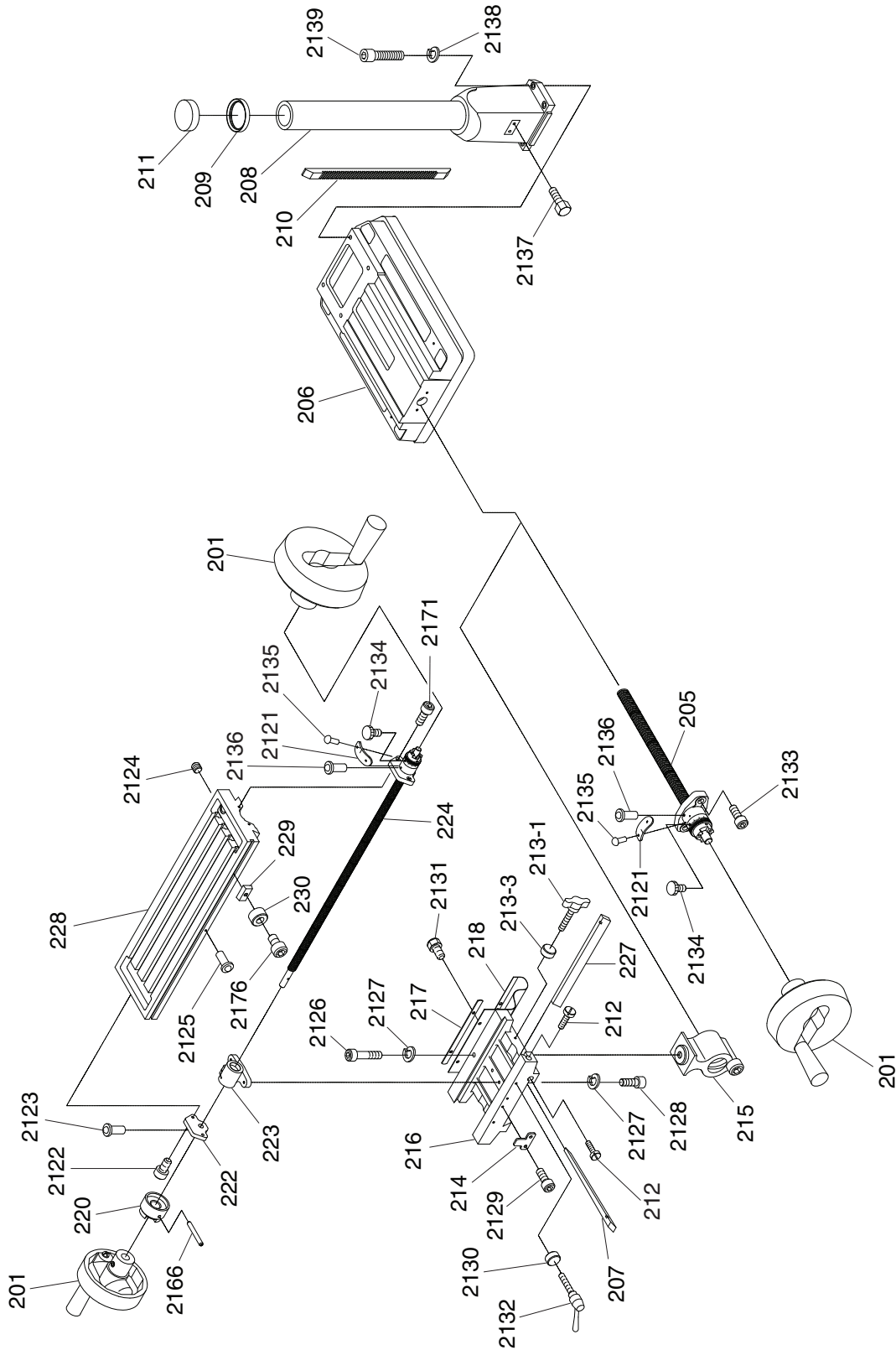


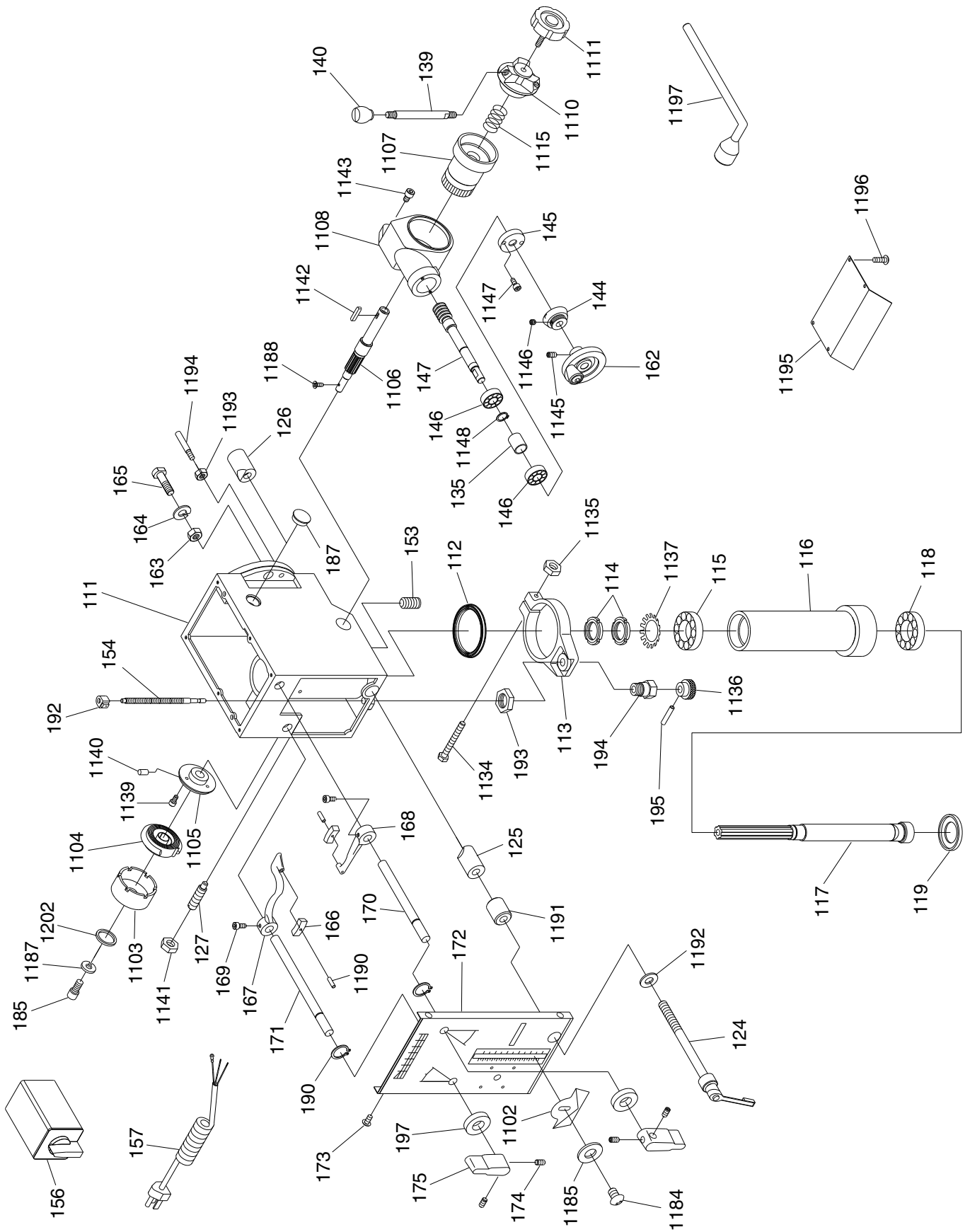
Table & Column Parts List

REF	PART #	DESCRIPTION
201	P1126201	TABLE HANDWHEEL
205	P1126205	LEADSCREW ASSY M23.5-2.5 X 468
206	P1126206	BASE
207	P1126207	CROSS SLIDE GIB
208	P1126208	COLUMN
209	P1126209	COLUMN RING
210	P1126210	RACK
211	P1126211	COLUMN CAP
212	P1126212	GIB BOLT 5/16"-18 X 1-3/8"
213-1	P1126213-1	CROSS LOCK BOLT
213-3	P1126213-3	BUSHING
214	P1126214	LONGITUDINAL LIMIT BLOCK
215	P1126215	LEADSCREW NUT M23.5-2.5
216	P1126216	SADDLE
217	P1126217	WAY COVER PLATE
218	P1126218	WAY COVER
220	P1126220	LEFT LONGITUDINAL CLUTCH
222	P1126222	LEFT LEADSCREW BRACKET
223	P1005613	LEADSCREW NUT M23.5-2.5
224	P1126224	LEADSCREW ASSY M23.5-2.5 X 97
227	P1126227	LONGITUDINAL GIB
228	P1126228	TABLE
229	P1005602	T-NUT 1/4-20

REF	PART #	DESCRIPTION
230	P1005603	LIMIT STOP SLEEVE
2121	P11262121	INDICATOR PLATE
2122	PCAP03	CAP SCREW 5/16-18 X 1
2123	P11262123	BALL OILER 1/4
2124	P11262124	PLUG 1/4 X 3/8
2125	P11262123	BALL OILER 1/4
2126	PCAP12	CAP SCREW 5/16-18 X 2-1/2
2127	PLW01	LOCK WASHER 5/16
2128	PCAP03	CAP SCREW 5/16-18 X 1
2129	PCAP30	CAP SCREW 5/16-18 X 1/2
2130	P11262130	BUSHING
2131	PB09	HEX BOLT 5/16-18 X 1/2
2132	P11262132	LONGITUDINAL LOCK BOLT
2133	PCAP03	CAP SCREW 5/16-18 X 1
2134	P11262134	DIAL POSITION SCREW
2135	P11261199	RIVET 2MM
2136	P11262123	BALL OILER 1/4
2137	PB09	HEX BOLT 5/16-18 X 1/2
2138	PLW06	LOCK WASHER 5/8
2139	PCAP27	CAP SCREW 5/8-11 X 2-1/2
2166	PRP28M	ROLL PIN 5 X 40
2171	PCAP03	CAP SCREW 5/16-18 X 1
2176	PCAP04	CAP SCREW 1/4-20 X 1/2



Head Breakdown



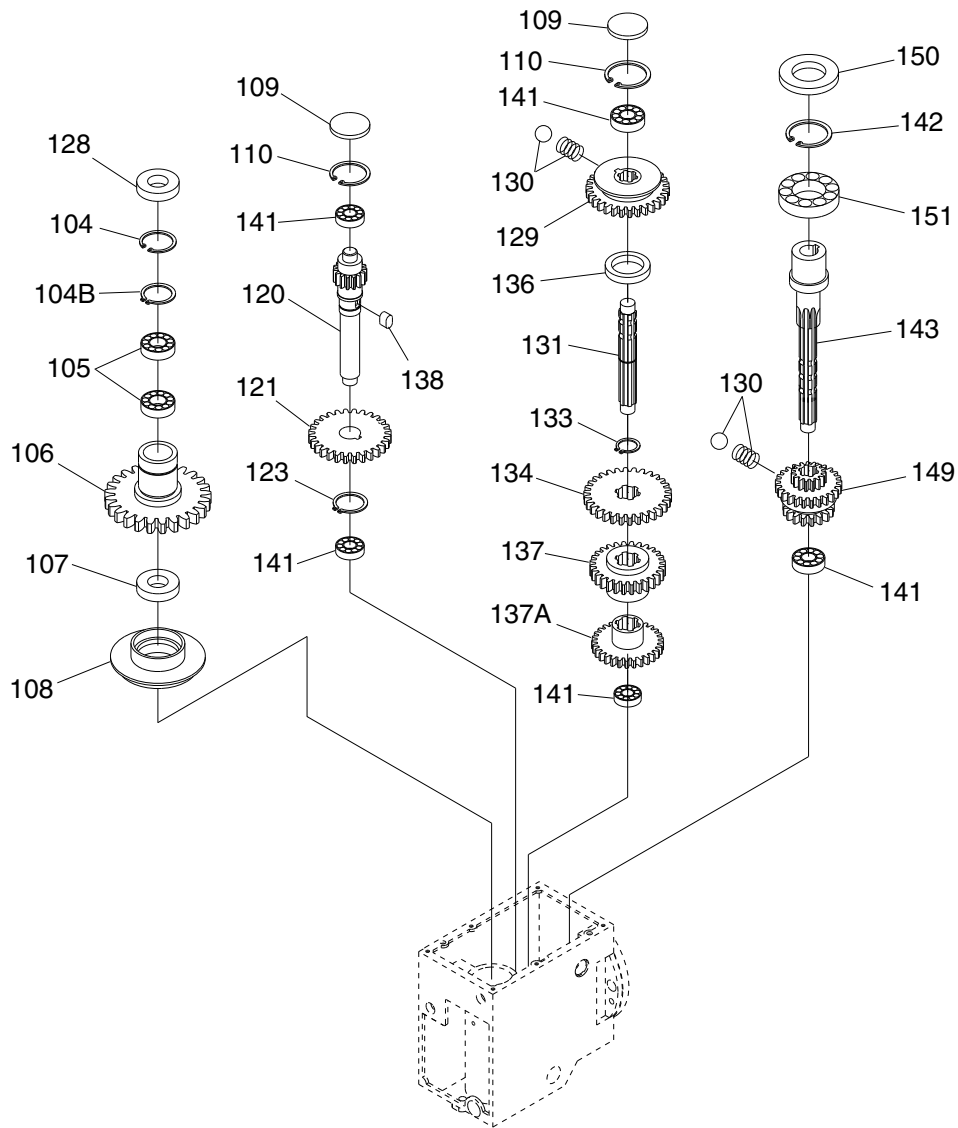
Head Parts List

REF	PART #	DESCRIPTION
111	P1126111	HEADSTOCK CASTING
112	P1126112	RUBBER FLANGE
113	P1126113	FEED BASE
114	P1126114	SPANNER NUT OD 29.5-20 UNF
115	P30206	TAPERED ROLLER BEARING 30206
116	P1126116	QUILL
117	P1126117	SPINDLE
118	P30207	TAPERED ROLLER BEARING 30207
119	P1126119	BEARING CAP
124	P1126124	QUILL LOCK ROD
125	P1126125	FRONT QUILL LOCK SLEEVE
126	P1126126	REAR QUILL LOCK SLEEVE
127	P1126127	DOG POINT SET SCREW 3/8-16 X 1-1/2
135	P1126135	BEARING SPACER 34 X 28
139	P1126139	COARSE DOWNFEED LEVER
140	P1126140	KNOB
144	P1126144	FINE DOWNFEED GRADUATED RING
145	P1126145	WORM COVER
146	P6202ZZ	BALL BEARING 6202ZZ
147	P1126147	WORM SHAFT
153	P1126153	OIL DRAIN PLUG
154	P1126154	DEPTH SCREW
156	P1126156	FWD/REV SWITCH
157	PWRCRD110L	POWER CORD
162	P1126162	HANDWHEEL
163	PLN07	LOCK NUT 5/8-11
164	PLW06	LOCK WASHER 5/8
165	P1126165	SPECIAL HEX BOLT
166	P1126166	SHIFTING FORK BRACKET
167	P1126167	SHIFTING FORK LEFT
168	P1126168	SHIFTING FORK RIGHT
169	PCAP04	CAP SCREW 1/4-20 X 1/2
170	P1126170	SHIFTING SHAFT RIGHT
171	P1126171	SHIFTING SHAFT LEFT
172	P1126172	HEADSTOCK FRONT COVER
173	PS06	PHLP HD SCR 10-24 X 3/8
174	PSS17	SET SCREW 5/16-18 X 5/16
175	P1126175	SHIFTING LEVER
185	PCAP01	CAP SCREW 1/4-20 X 5/8
187	P1126187	OIL SIGHT GLASS
190	PR03M	EXT RETAINING RING 12MM

REF	PART #	DESCRIPTION
192	P1126192	DEPTH SCREW NUT
193	P1126193	THIN HEX NUT 5/8-18
194	P1126194	DEPTH SCREW BASE
195	P1126195	SPECIAL PIN
197	P1126197	OIL SEAL
1102	P11261102	DEPTH INDICATOR
1103	P11261103	SPRING COVER
1104	P11261104	TENSION SPRING
1105	P11261105	SPRING BASE
1106	P11261106	PINION SHAFT
1107	P11261107	WORM GEAR
1108	P11261108	DOWNFEED GEAR HOUSING
1110	P11261110	COARSE DOWNFEED LEVER HUB
1111	P11261111	LOCK KNOB 3/8"-16 X 5/8
1115	P11261115	COMPRESSION SPRING 175 X 25MM
1134	PB10	HEX BOLT 1/4-20 X 2
1135	PN05	HEX NUT 1/4-20
1136	P11261136	KNURLED DEPTH KNOB
1137	P11261137	LOCK WASHER 30 X 39 X 1.0
1139	PS08	PHLP HD SCR 10-24 X 3/4
1140	P11261140	SPECIAL PIN
1141	PN08	HEX NUT 3/8-16
1142	PK25M	KEY 7 X 7 X 20
1143	PCAP07	CAP SCREW 5/16-18 X 3/4
1145	PSS05	SET SCREW 5/16-18 X 1/4
1146	PSS11	SET SCREW 1/4-20 X 1/4
1147	PCAP02	CAP SCREW 10-24 X 3/8
1148	PR05M	EXT RETAINING RING 15MM
1184	PS41	PHLP HD SCR 6-32 X 1/4
1185	PW16	FLAT WASHER #6
1187	P11261187	SPECIAL WASHER 65 X 25 X 2.0
1188	PFH08	FLAT HD SCR 10-24 X 1/2
1190	P11261190	SPECIAL PIN
1191	P11261191	QUILL LOCK SLEEVE
1192	PW01	FLAT WASHER 1/2
1193	P11261193	SPECIAL HEX NUT
1194	P11261194	THREADED MITER PIN
1195	P11261195	DUST PLATE
1196	PS06	PHLP HD SCR 10-24 X 3/8
1197	P11261197	SOCKET WRENCH
1202	PW06	FLAT WASHER 1/4



Gearing

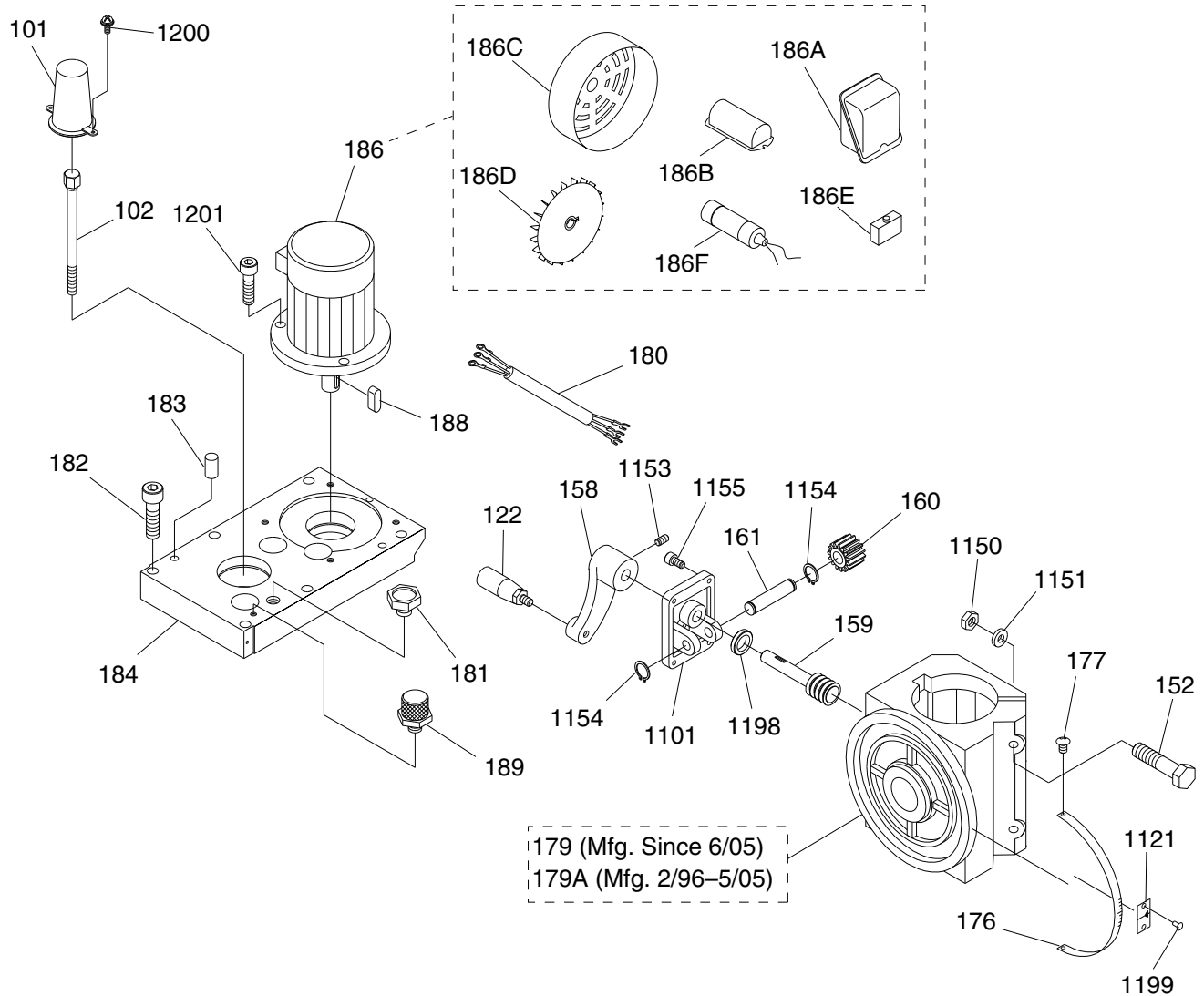


REF	PART #	DESCRIPTION
104	PR23M	INT RETAINING RING 40MM
104B	P1126104B	SPECIAL EXT RETAINING RING
105	P6008OPEN	BALL BEARING 6008 OPEN
106	P1126106	SPINDLE SLEEVE GEAR
107	P1126107	OIL SEAL 35 X 45 X 8
108	P1126108	SEAL RETAINER
109	P1126109	DUST COVER
110	PR21M	INT RETAINING RING 35MM
120	P1126120	GEAR SHAFT
121	P1126121	GEAR 41T
123	PR12M	EXT RETAINING RING 35MM
128	P1126128	OIL SEAL 40 X 68 X 8
129	P1126129	GEAR 16T/43T
130	P1126130	SPRING- BALL ASSEMBLY 9 X 7

REF	PART #	DESCRIPTION
131	P1126131	GEAR SHAFT
133	PR07M	EXT RETAINING RING 18MM
134	P1126134	GEAR
136	P1126136	BUSHING
137	P1126137	GEAR 28T
137A	P1126137A	GEAR 35T
138	PK95M	KEY 6 X 6 X 10
141	P6202OPEN	BALL BEARING 6202 OPEN
142	PR38M	INT RETAINING RING 62MM
143	P1126143	SHAFT
149	P1126149	GEAR 22T/31T/15T
150	P1126150	OIL SEAL 35 X 62 X 8
151	P6007ZZ	BALL BEARING 6007ZZ



Motor & Column Bracket

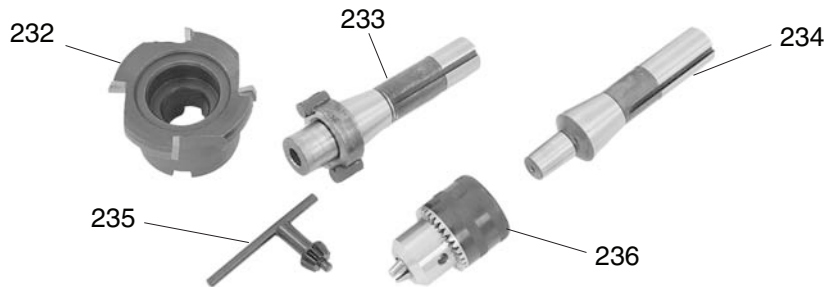
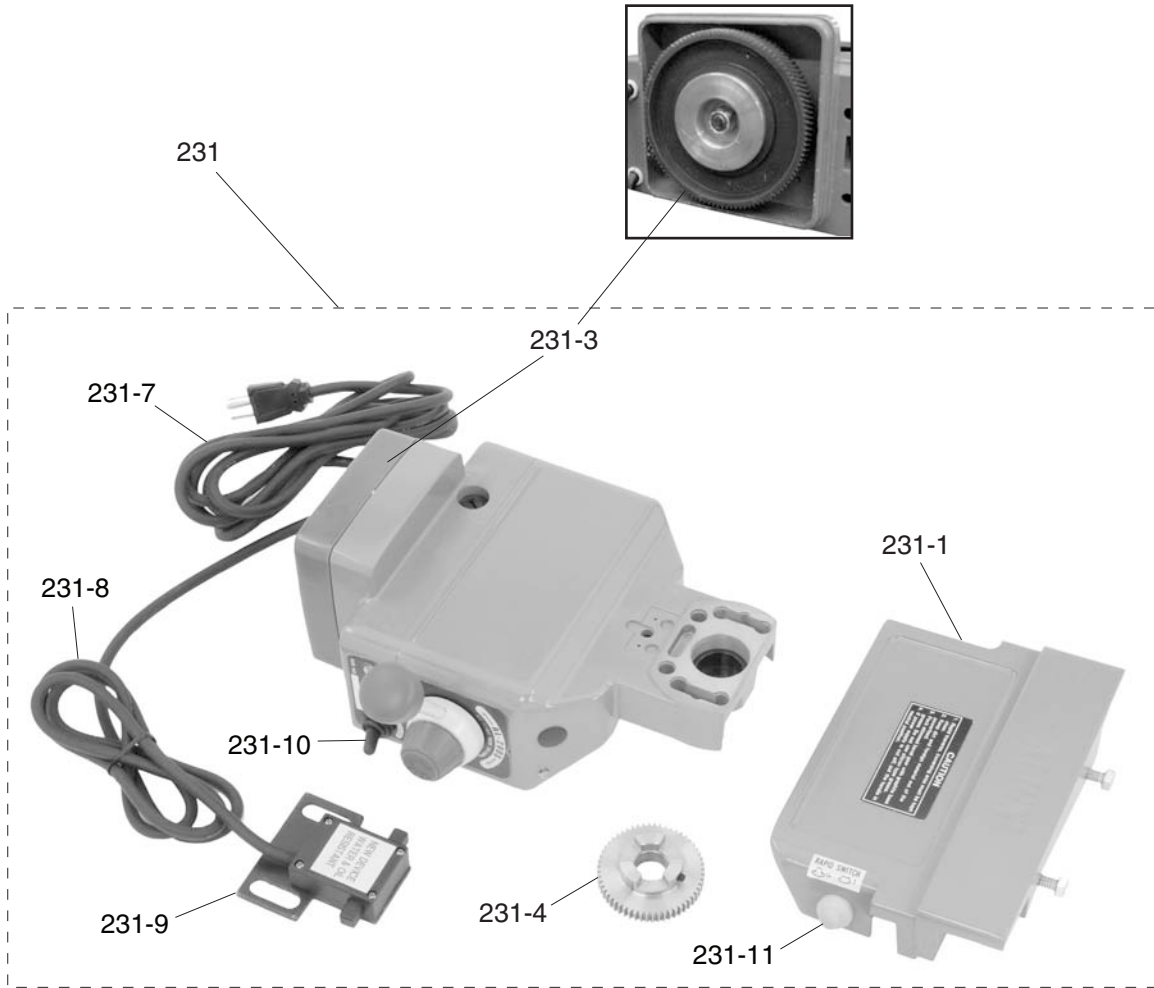


REF	PART #	DESCRIPTION
101	P1126101	DRAWBAR COVER
102	P1126102	DRAWBAR 7/16-20 X 17-3/8
122	P1126122	GRIP
152	PB100	HEX BOLT 5/8-11 X 8
158	P1126158	ELEVATION CRANK
159	P1126159	WORM SHAFT
160	P1126160	WORM
161	P1126161	SHAFT
176	P1126176	HEAD TILT SCALE
177	PS06	PHLP HD SCR 10-24 X 3/8
179	P1126179	HEAD COLUMN BRACKET V2.06.05
179A	P1126179A	HEAD COLUMN BRACKET V1.02.96
180	P1126180	MOTOR CORD 3-WIRE
181	P1126181	OIL FILLER PLUG
182	PCAP05M	CAP SCREW M8-1.25 X 40
183	P1126183	SPECIAL PIN
184	P1126184	HEAD CASTING COVER
186	P1126186	MOTOR 1-1/2HP 110/220V 1PH
186A	P1126186A	MOTOR JUNCTION BOX

REF	PART #	DESCRIPTION
186B	P1126186B	CAPACITOR COVER
186C	P1126186C	MOTOR FAN COVER
186D	P1126186D	MOTOR FAN
186E	P1126186E	CIRCUIT BREAKER
186F	P1126186F	S. CAPACITOR 150M 250V 1-3/8 x 3
188	PK42M	KEY 6 X 6 X 30
189	P1126189	RELIEF VALVE
1101	P11261101	ELEVATION CRANK BRACKET
1121	P11261121	INDICATOR PLATE
1150	PN04	HEX NUT 5/8"-11
1151	PW14	FLAT WASHER 5/8
1153	PSS05	SET SCREW 5/16-18 X 1/4
1154	PR02M	EXT RETAINING RING 14MM
1155	PCAP06	CAP SCREW 1/4-20 X 1
1198	P11261198	BUSHING
1199	P11261199	RIVET 2MM
1200	PS17M	PHLP HD SCR M4-.7 X 6
1201	PCAP14	CAP SCREW 3/8-16 X 1



Power Feed & Accessories



REF	PART #	DESCRIPTION
231	P1126231	POWER FEED ASSEMBLY
231-1	P1126231-1	POWER FEED MOUNTING BRACKET
231-3	P1126231-3	POWER FEED LEXAN GEAR
231-4	P1126231-4	MAIN DRIVE GEAR
231-7	P1126231-7	POWER FEED POWER CORD
231-8	P1126231-8	LIMIT SWITCH CORD
231-9	P1126231-9	LIMIT SWITCH ASSEMBLY

REF	PART #	DESCRIPTION
231-10	P1126231-10	ON/OFF SWITCH
231-11	P1126231-11	RAPID SWITCH
232	P1126232	FACE MILL CUTTER 3"
233	P1126233	ARBOR R8/STUB
234	P1126234	ARBOR R8/JT#2
235	P1126235	CHUCK KEY
236	P1126236	DRILL CHUCK JT#2



Label Placement & List

301

Grizzly Industrial **MODEL G1126**
GEAR HEAD MILL/DRILL

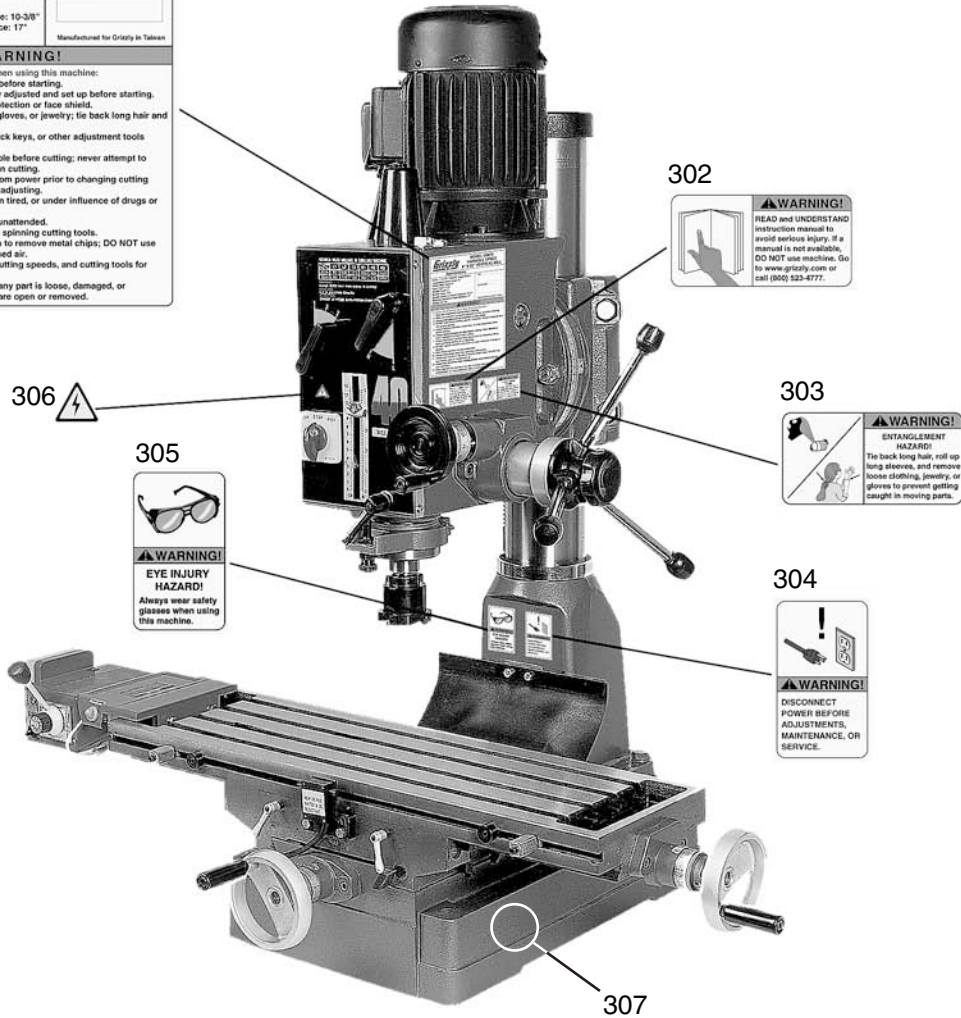
Specifications

Motor: 1-1/2 HP, 110/220V, Single-Phase Longitudinal Table Travel: 24" Cross Table Travel: 9" Head Travel: 13-3/8" Spindle Travel: 5" Spindle Taper: R-8 Spindle Center to Column Distance: 10-3/8" Maximum Spindle to Table Distance: 17" Weight: 631 lbs.	Date: _____ Serial Number: _____ Manufactured for Grizzly in Taiwan
---	---

⚠️ WARNING!

To reduce risk of serious injury when using this machine:

1. Read and understand manual before starting.
2. Make sure machine is properly adjusted and set up before starting.
3. Always wear approved eye protection or face shield.
4. DO NOT wear loose clothing, gloves, or jewelry; tie back long hair and roll up long sleeves.
5. Always remove wrenches, chuck keys, or other adjustment tools before starting.
6. Always clamp workpiece to table before cutting; never attempt to hold a workpiece by hand when cutting.
7. Always disconnect machine from power prior to changing cutting tools, servicing, setting up, or adjusting.
8. DO NOT operate machine when tired, or under influence of drugs or alcohol.
9. Never leave machine running unattended.
10. Always keep hands away from spinning cutting tools.
11. Always use a brush or vacuum to remove metal chips; DO NOT use your hands, rags, or compressed air.
12. Always use the correct feed, cutting speeds, and cutting tools for your operation.
13. Never operate this machine if any part is loose, damaged, or misadjusted; or if any guards are open or removed.



REF	PART #	DESCRIPTION
301	P1126301	MACHINE ID LABEL
302	PLABEL-12D	READ MANUAL LABEL
303	PLABEL-55C	ENTANGLEMENT HAZARD LABEL
304	PLABEL-62A	DISCONNECT WARNING LABEL

REF	PART #	DESCRIPTION
305	PLABEL-11B	EYE INJURY HAZARD LABEL
306	PLABEL-14	ELECTRICITY LABEL
307	PPAINT-1	GRIZZLY GREEN TOUCH-UP PAINT

⚠️ WARNING

Safety labels warn about machine hazards and ways to prevent injury. The owner of this machine **MUST** maintain the original location and readability of the labels on the machine. If any label is removed or becomes unreadable, **REPLACE** that label before using the machine again. Contact Grizzly at (800) 523-4777 or www.grizzly.com to order new labels.

