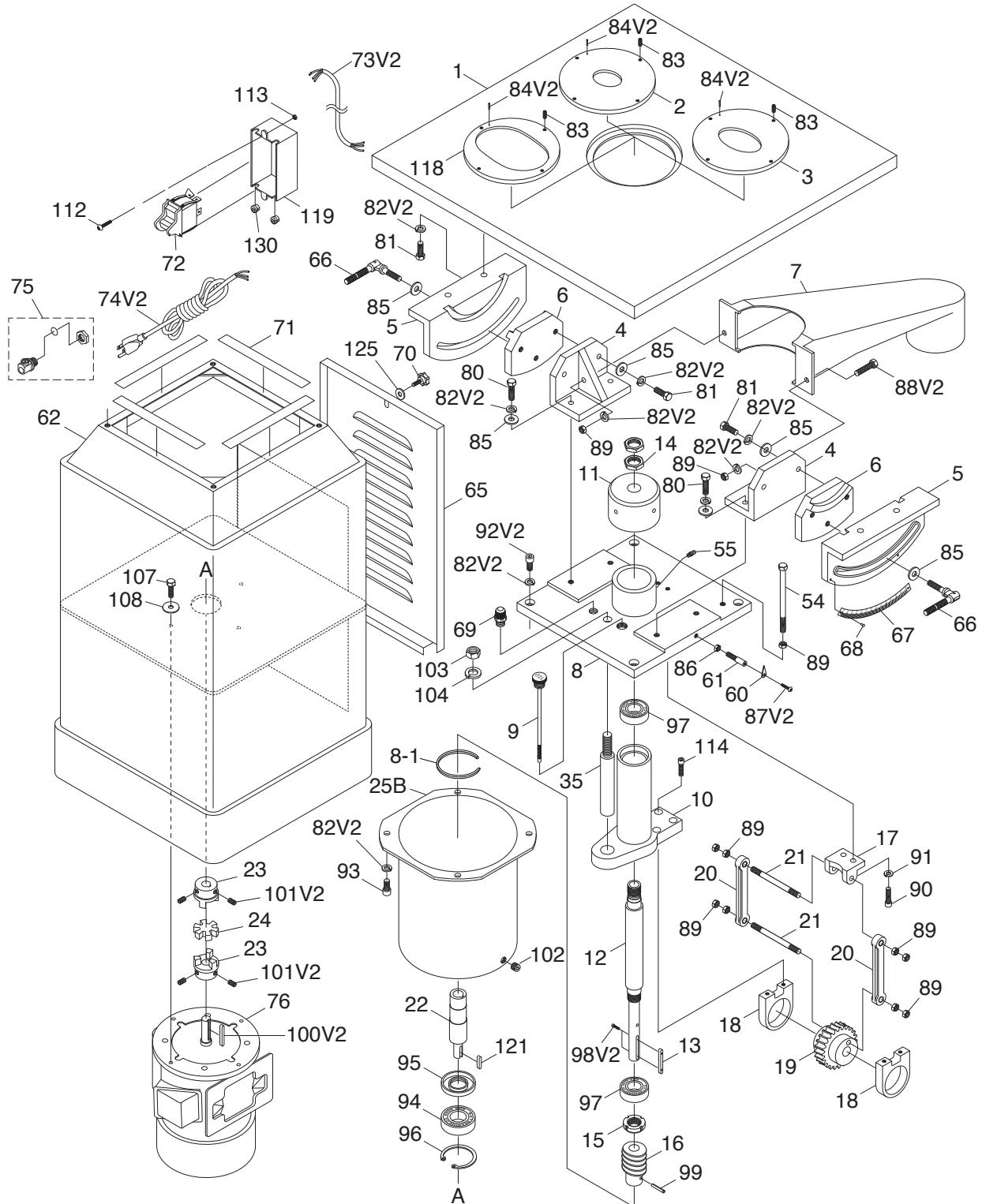


SECTION 9: PARTS

We do our best to stock replacement parts when possible, but we cannot guarantee that all parts shown are available for purchase. Call (800) 523-4777 or visit www.grizzly.com/parts to check for availability.

G1071 Main



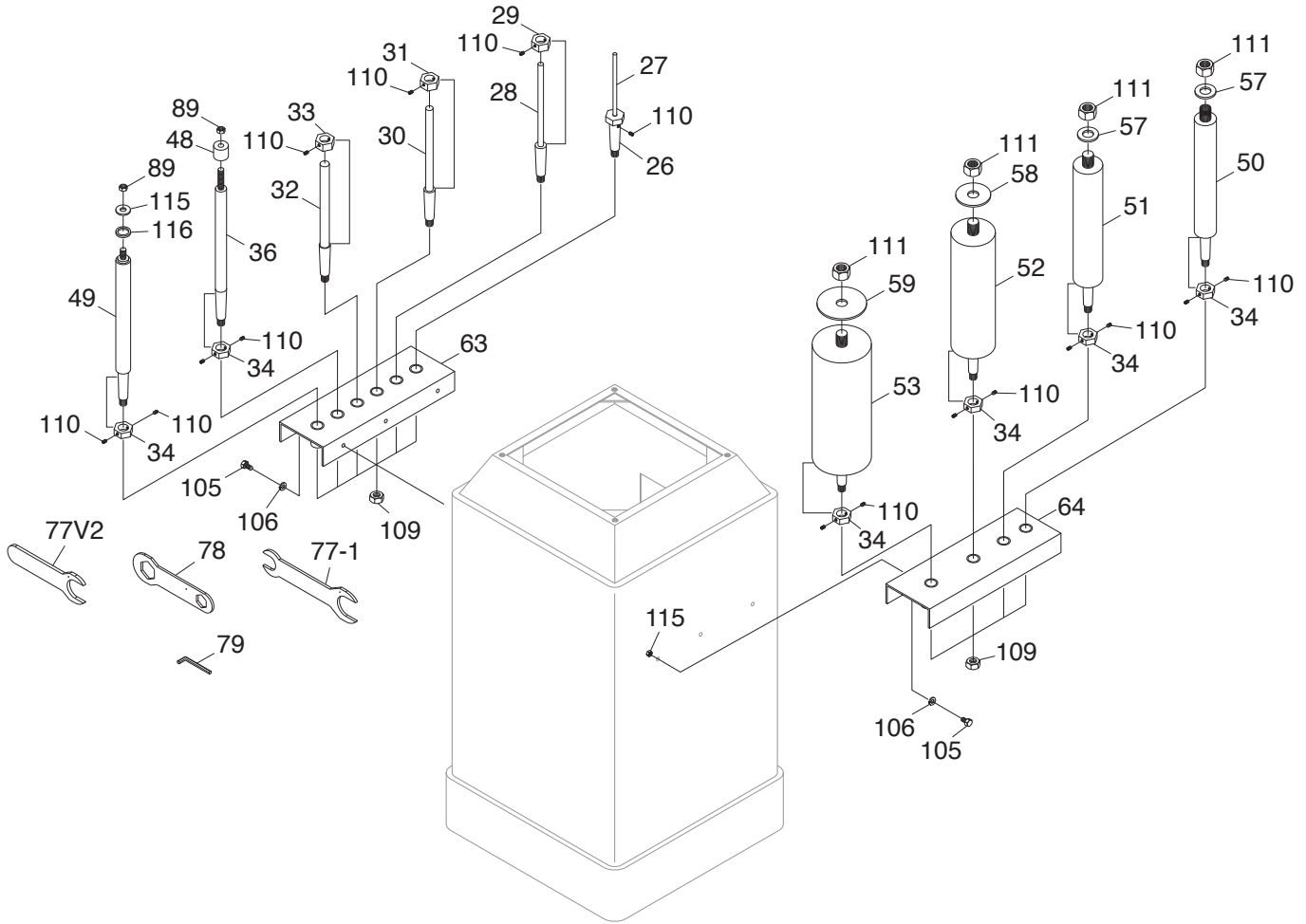
G1071 Main Parts List

REF	PART #	DESCRIPTION
1	P1071001	TABLE
2	P1071002	INSERT 1-3/4" X 2-3/16"
3	P1071003	INSERT 2" X 3-3/8"
4	P1071004	BRACKET
5	P1071005	TRUNNION
6	P1071006	INNER TRUNNION
7	P1071007	DUST HOOD
8	P1071008	HOUSING CASTING
8-1	P1071008-1	RUBBER STRIP
9	P1071009	DIPSTICK
10	P1071010	SPINDLE CASTING
11	P1071011	COVER
12	P1071012	SPINDLE
13	P1071013	SPINDLE KEY 5 X 5 X 50
14	P1071014	JAM NUT 15/16-20
15	P1071015	SPANNER NUT 15/16-20
16	P1071016	WORM
17	P1071017	MOUNTING BRACKET
18	P1071018	BEARING BLOCK
19	P1071019	WORM GEAR 24T
20	P1071020	CONNECTING ROD
21	P1071021	WRIST PIN
22	P1071022	DRIVE SHAFT
23	P1071023	HUB
24	P1071024	CENTER BLOCK
25B	P1071025B	CASE V2.11.98
35	P1071035	GUIDE SHAFT
54	P1071054	HEX BOLT 3/8-16 X 6-1/2
55	P1071055	GREASE FITTING M6-1 X 5
60	P1071060	POINTER
61	P1071061	POINTER MOUNT
62	P1071062	CABINET
65	P1071065	DOOR
66	P1071066	LOCK HANDLE
67	P1071067	SCALE
68	P1071068	RIVET 2 X 5MM NAMEPLATE, STEEL
69	P1071069	OIL BREATHER
70	P1071070	KNOB
71	P1071071	GASKET
72	P1071072	TOGGLE SAFETY SWITCH

REF	PART #	DESCRIPTION
73V2	P1071073V2	MOTOR CORD 16G 3W 30" V2.11.10
74V2	P1071074V2	POWER CORD 16G 3W 12' 5-15P V2.11.10
75	P1071075	STRAIN RELIEF M15 TYPE-2
76	P1071076	MOTOR 1HP 120/240V 1-PH
80	P1071080	HEX BOLT 3/8-16 X 1-1/4
81	P1071081	HEX BOLT 3/8-16 X 1
82V2	P1071082V2	LOCK WASHER 10MM
83	P1071083	SET SCREW 1/4-20 X 5/8
84V2	P1071084V2	ROLL PIN 5 X 28
85	P1071085	FLAT WASHER 3/8
86	P1071086	HEX NUT 5/16-18
87V2	P1071087V2	PHLP HD SCR 6-32 X 1/4
88V2	P1071088V2	HEX BOLT 3/8-16 X 1-1/4
89	P1071089	HEX NUT 3/8-16
90	P1071090	CAP SCREW 5/16-18 X 1
91	P1071091	LOCK WASHER 5/16
92V2	P1071092V2	CAP SCREW 3/8-16 X 1
93	P1071093	CAP SCREW 3/8-16 X 3/4
94	P1071094	BALL BEARING 6206-2RS
95	P1071095	SEAL 30-62-8
96	P1071096	INT RETAINING RING 62MM
97	P1071097	BALL BEARING 6205-2RS
98V2	P1071098V2	CAP SCREW #4-40 X 1/2 V2.04.09
99	P1071099	ROLL PIN 5 X 30
100V2	P1071100V2	KEY 5 X 5 X 25
101V2	P1071101V2	SET SCREW 5/16-18 X 3/8
102	P1071102	OIL DRAIN PLUG
103	P1071103	HEX NUT 5/8-11
104	P1071104	LOCK WASHER 5/8
107	P1071107	HEX BOLT 5/16-18 X 1
108	P1071108	FENDER WASHER 5/16
112	P1071112	PHLP HD SCR 10-24 X 1
113	P1071113	HEX NUT 10-24
114	P1071114	CAP SCREW 5/16-18 X 1
118	P1071118	INSERT 4-1/4" X 6"
119	P1071119	DUST COVER
121	P1071121	KEY 5 X 5 X 24
125	P1071125	FLAT WASHER 1/4
130	P1071130	STRAIN RELIEF 16MM



G1071 Spindles & Storage

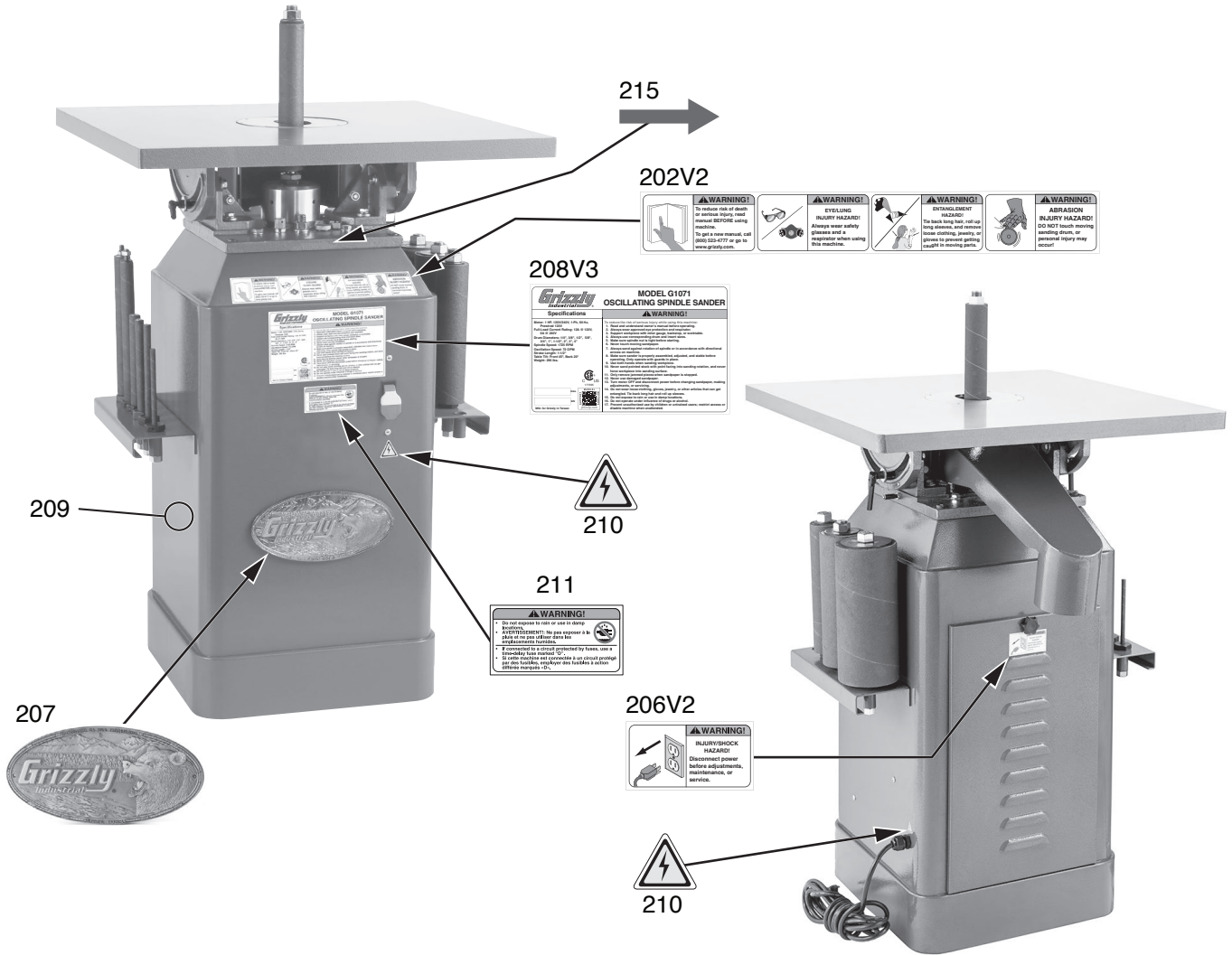


REF	PART #	DESCRIPTION
26	P1071026	ARBOR
27	P1071027	SPINDLE 1/4"
28	P1071028	SPINDLE 3/8"
29	P1071029	RETAINER
30	P1071030	SPINDLE 1/2"
31	P1071031	RETAINER
32	P1071032	SPINDLE 5/8"
33	P1071033	RETAINER
34	P1071034	RETAINER
36	P1071036	SPINDLE 3/4"
48	P1071048	GROMMET 19 X 9MM PLASTIC
49	P1071049	SPINDLE 1"
50	P1071050	SPINDLE 1-1/2"
51	P1071051	SPINDLE 2"
52	P1071052	SPINDLE 3"
53	P1071053	SPINDLE 4"

REF	PART #	DESCRIPTION
57	P1071057	WASHER 36 X 19 X 3MM
58	P1071058	FLAT WASHER 18MM
59	P1071059	FLAT WASHER 18MM
63	P1071063	SPINDLE HOLDER
64	P1071064	SPINDLE HOLDER
77V2	P1071077V2	FLAT WRENCH 1-1/8 V2.01.02
77-1	P1071077-1	FLAT COMBO WRENCH 7/8 X 1-1/4 V2.01.02
78	P1071078	FLAT COMBO SPINDLE WRENCH 1 X 3/4
79	P1071079	HEX WRENCH 2MM
89	P1071089	HEX NUT 3/8-16
105	P1071105	HEX BOLT 1/4-20 X 1/2
106	P1071106	LOCK WASHER 1/4
110	P1071110	SET SCREW 10-24 X 1/4
111	P1071111	HEX NUT 3/4-16
115	P1071115	FLAT WASHER 3/8
116	P1071116	SPACER



G1071 Labels & Cosmetics



REF	PART #	DESCRIPTION
202V2	P1071202V2	COMBO WARNING LABEL
206V2	P1071206V2	DISCONNECT POWER LABEL
207	P1071207	GRIZZLY NAMEPLATE-LARGE
208V3	P1071208V3	MACHINE ID LABEL V3.02.26

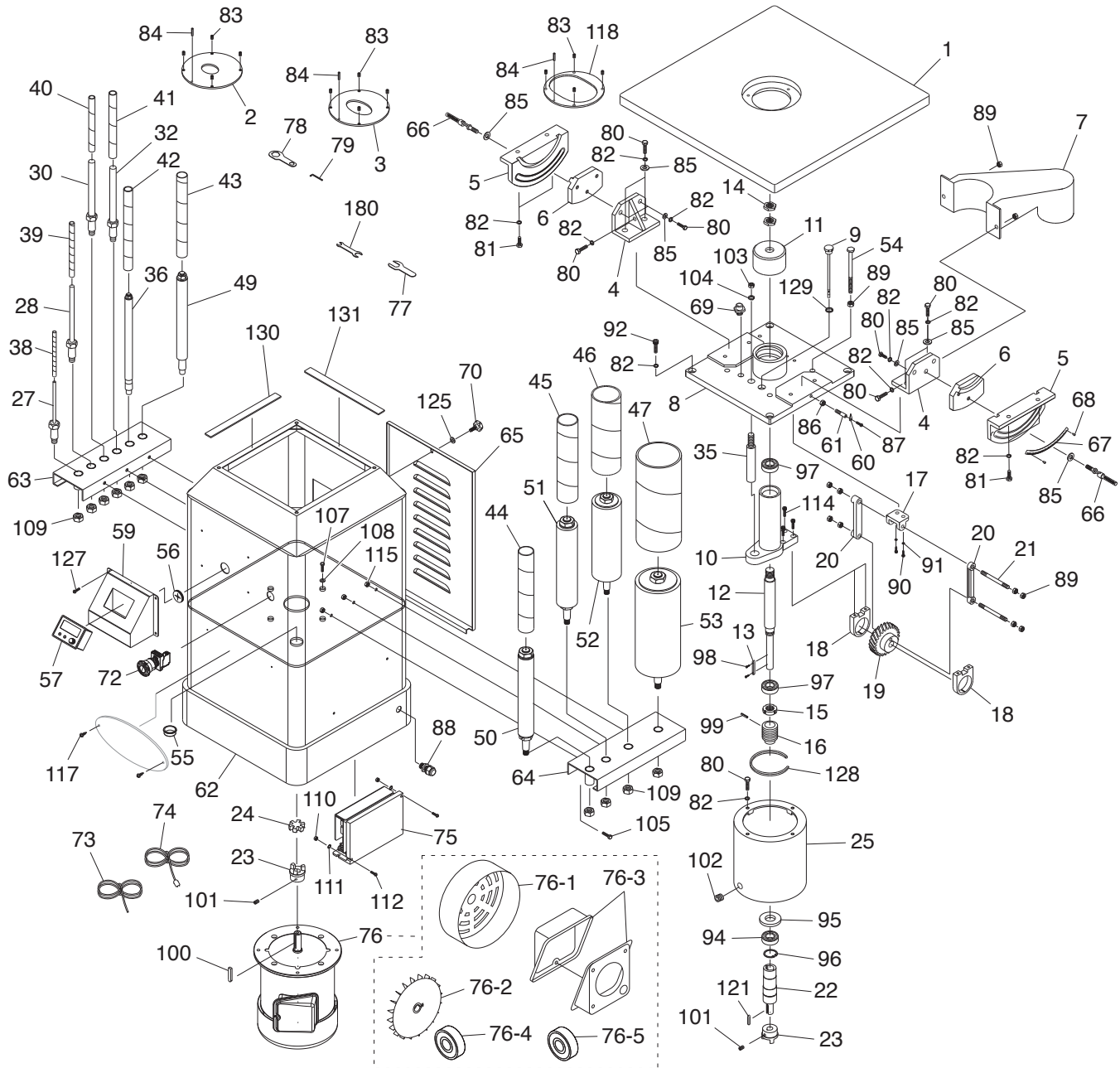
REF	PART #	DESCRIPTION
209	P1071209	TOUCH-UP PAINT, GRIZZLY GREEN
210	P1071210	ELECTRICITY LABEL
211	P1071211	DAMPNESS WARNING LABEL
215	P1071215	DIRECTION LABEL

⚠WARNING

Safety labels help reduce the risk of serious injury caused by machine hazards. If any label comes off or becomes unreadable, the owner of this machine **MUST** replace it in the original location before resuming operations. For replacements, contact (800) 523-4777 or www.grizzly.com.



G1071Z Main



REF PART #	DESCRIPTION
1	P1071Z001 TABLE
2	P1071Z002 TABLE INSERT 1-3/4 X 2-3/16
3	P1071Z003 TABLE INSERT 2-3/16 X 3-1/2
4	P1071Z004 BRACKET

REF PART #	DESCRIPTION
5	P1071Z005 TRUNNION OUTER
6	P1071Z006 TRUNNION INNER
7	P1071Z007 DUST CHUTE
8	P1071Z008 HOUSING



G1071Z Main Parts List

REF PART #	DESCRIPTION
9	P1071Z009 DIPSTICK
10	P1071Z010 SPINDLE CASTING
11	P1071Z011 COVER
12	P1071Z012 SPINDLE
13	P1071Z013 SPINDLE KEY 5 X 5 X 50
14	P1071Z014 HEX NUT 15/16-20 THIN
15	P1071Z015 SPANNER NUT 15/16-20
16	P1071Z016 WORM
17	P1071Z017 GEAR MOUNTING BRACKET
18	P1071Z018 BEARING BLOCK
19	P1071Z019 WORM GEAR 24T
20	P1071Z020 CONNECTING ROD
21	P1071Z021 STUD-DE 3/8-16 X 4-5/16, 5/8
22	P1071Z022 DRIVE SHAFT
23	P1071Z023 HUB
24	P1071Z024 CENTER BLOCK
25	P1071Z025 SPINDLE CASE
27	P1071Z027 SPINDLE 1/4"
28	P1071Z028 SPINDLE 3/8"
30	P1071Z030 SPINDLE 1/2"
32	P1071Z032 SPINDLE 5/8"
35	P1071Z035 GUIDE SHAFT
36	P1071Z036 SPINDLE 3/4"
38	P1071Z038 SANDING SLEEVE 1/4 X 5 100-GR (3-PK)
39	P1071Z039 SANDING SLEEVE 3/8 X 6 100-GR (3-PK)
40	P1071Z040 SANDING SLEEVE 1/2 X 6 100-GR (3-PK)
41	P1071Z041 SANDING SLEEVE 5/8 X 6 100-GR (3-PK)
42	P1071Z042 SANDING SLEEVE 3/4 X 9 100-GR (3-PK)
43	P1071Z043 SANDING SLEEVE 1 X 9 100-GR (3-PK)
44	P1071Z044 SANDING SLEEVE 1-1/2 X 9 100-GR (3-PK)
45	P1071Z045 SANDING SLEEVE 2 X 9 100-GR (3-PK)
46	P1071Z046 SANDING SLEEVE 3 X 9 100-GR (3-PK)
47	P1071Z047 SANDING SLEEVE 4 X 9 100-GR (3-PK)
49	P1071Z049 SPINDLE 1"
50	P1071Z050 SPINDLE 1-1/2"
51	P1071Z051 SPINDLE 2"
52	P1071Z052 SPINDLE 3"
53	P1071Z053 SPINDLE 4"
54	P1071Z054 HEX BOLT 3/8-16 X 6-1/2
55	P1071Z055 GROMMET 30MM
56	P1071Z056 DUST GROMMET 30MM
57	P1071Z057 CONTROL PANEL TAI-CHUAN
59	P1071Z059 CONTROL PANEL MOUNT
60	P1071Z060 POINTER
61	P1071Z061 POINTER MOUNT
62	P1071Z062 CABINET
63	P1071Z063 SPINDLE HOLDER 6-HOLE
64	P1071Z064 SPINDLE HOLDER 4-HOLE
65	P1071Z065 CABINET PANEL
66	P1071Z066 FOLDING HANDLE 3/8-16 X 1-1/4, 2-13/16L
67	P1071Z067 ANGLE SCALE
68	P1071Z068 RIVET 2 X 5MM NAMEPLATE, STEEL
69	P1071Z069 OIL BREATHER
70	P1071Z070 KNOB BOLT 1/4-20 X 3/4, 6-LOBE, D1-5/16
72	P1071Z072 E-STOP BUTTON NHD NPB22-H01

REF PART #	DESCRIPTION
73	P1071Z073 MOTOR CORD 16G 4W 16"
74	P1071Z074 POWER CORD 14G 3W 150" 5-15P
75	P1071Z075 VFD TAI-CHUAN TA11D5
76	P1071Z076 MOTOR 1HP 220V 3-PH
76-1	P1071Z076-1 MOTOR FAN COVER
76-2	P1071Z076-2 MOTOR FAN
76-3	P1071Z076-3 MOTOR JUNCTION BOX
76-4	P1071Z076-4 BALL BEARING 6204ZZ (FRONT)
76-5	P1071Z076-5 BALL BEARING 6203ZZ (REAR)
77	P1071Z077 FLAT WRENCH 1-1/8 OPEN-END
78	P1071Z078 FLAT WRENCH 3/4 X 1 CLOSED-ENDS
79	P1071Z079 HEX WRENCH 2MM
80	P1071Z080 HEX BOLT 3/8-16 X 1-1/4
81	P1071Z081 HEX BOLT 3/8-16 X 1
82	P1071Z082 LOCK WASHER 10MM
83	P1071Z083 SET SCREW 1/4-20 X 5/8
84	P1071Z084 ROLL PIN 5 X 28
85	P1071Z085 FENDER WASHER 3/8
86	P1071Z086 HEX NUT 5/16-18
87	P1071Z087 PHLP HD SCR 8-32 X 1/4
88	P1071Z088 STRAIN RELIEF TYPE-3 M16-1.5
89	P1071Z089 HEX NUT 3/8-16
90	P1071Z090 CAP SCREW 5/16-18 X 1
91	P1071Z091 LOCK WASHER 5/16
92	P1071Z092 CAP SCREW 3/8-16 X 1
94	P1071Z094 BALL BEARING 6206-2RS
95	P1071Z095 OIL SEAL 30 X 62 X 2MM
96	P1071Z096 INT RETAINING RING 35MM
97	P1071Z097 BALL BEARING 6205-2RS
98	P1071Z098 CAP SCREW 4-40 X 1/2
99	P1071Z099 ROLL PIN 5 X 30
100	P1071Z100 KEY 5 X 5 X 25
101	P1071Z101 SET SCREW 5/16-18 X 3/8
102	P1071Z102 DRAIN PLUG 1/4-19 X 7/16
103	P1071Z103 HEX NUT 5/8-11
104	P1071Z104 LOCK WASHER 5/8
105	P1071Z105 HEX BOLT 1/4-20 X 1/2
107	P1071Z107 HEX BOLT 5/16-18 X 1
108	P1071Z108 FENDER WASHER 5/16
109	P1071Z109 HEX NUT 1/2-13
110	P1071Z110 HEX NUT 10-24
111	P1071Z111 EXT TOOTH WASHER #10
112	P1071Z112 PHLP HD SCR 10-24 X 5/8
114	P1071Z114 CAP SCREW 5/16-18 X 1
115	P1071Z115 HEX NUT 1/4-20
117	P1071Z117 TAP SCREW #5 X 3/8
118	P1071Z118 TABLE INSERT 4-1/4 X 6
121	P1071Z121 KEY 5 X 5 X 25
125	P1071Z125 FLAT WASHER 1/4
127	P1071Z127 PHLP HD SCR 10-24 X 3/8
128	P1071Z128 RUBBER STRIP 3 X 755MM
129	P1071Z129 O-RING 15.8 X 2.4 P16
130	P1071Z130 GASKET 20 X 1 X 240MM
131	P1071Z131 GASKET 20 X 1 X 240MM
180	P1071Z180 FLAT WRENCH 7/8 X 1-1/4 OPEN-ENDS



