

READ THIS FIRST



Model G1033X/G1033Z
*****IMPORTANT UPDATE*****
 For Machines Mfd. Since 10/24
 and Owner's Manual Revised 09/19

For questions or help with this product contact Tech Support at (570) 546-9663 or techsupport@grizzly.com

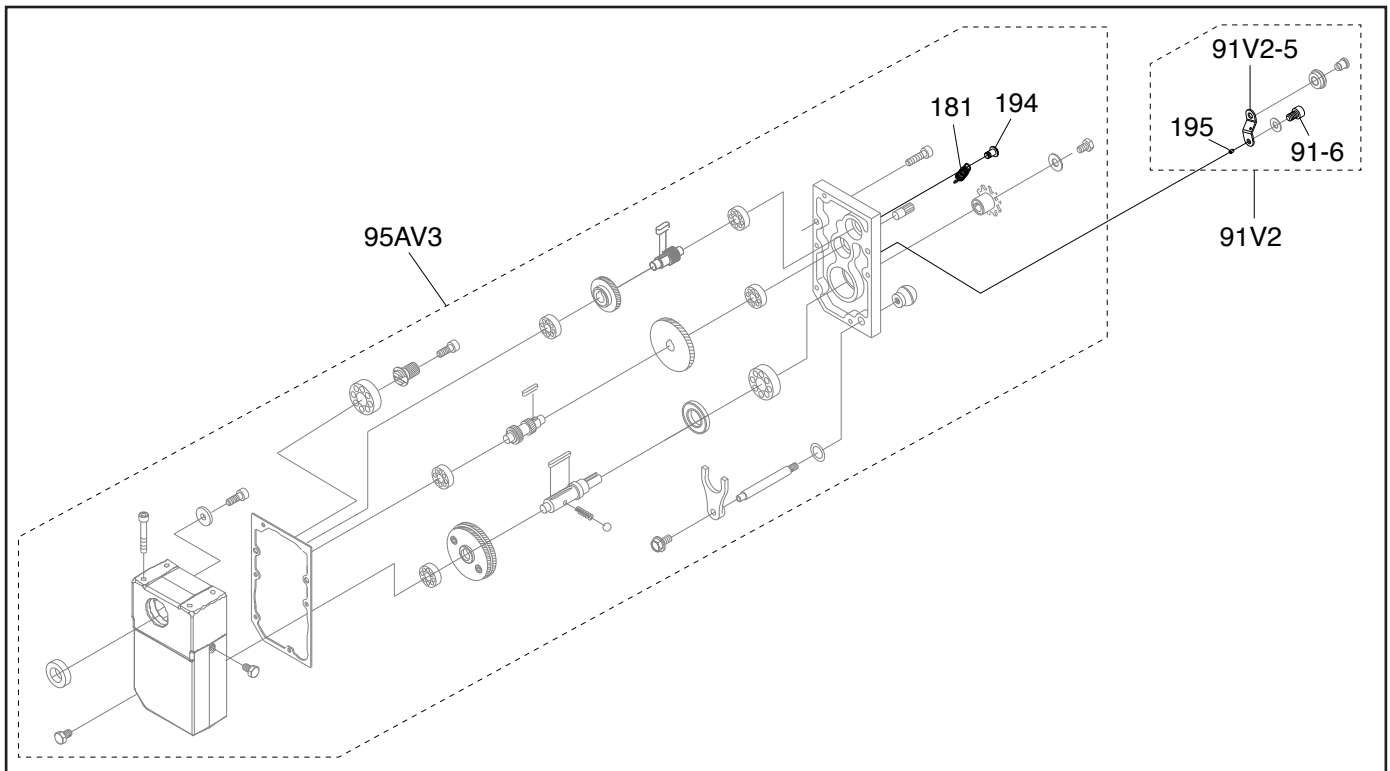
The following changes were recently made since the owner's manual was printed:

- Parts have changed.

Aside from this information, all other content in the owner's manual applies and **MUST** be read and understood for your own safety. **IMPORTANT: Keep this update with the owner's manual for future reference.**

For questions or help, contact our Tech Support at (570) 546-9663 or techsupport@grizzly.com.

G1033X Revised Main Parts



REF	PART #	DESCRIPTION
91V2	P1033X091V2	SPROCKET & CHAIN ASSY V2.10.24
91V2-5	P1033X091V2-5	BRACKET V2.10.24
91-6	P1033X091-6	CAP SCREW M6-1 X 30
95AV3	P1033X095AV3	GEARBOX ASSEMBLY V3.10.24

REF	PART #	DESCRIPTION
181	P1033X181	EXTENSION SPRING 1 X 7.5 X 33
194	P1033X194	BUTTON HD CAP SCR M6-1 X 10
195	P1033X195	BUSHING 6.2 x 10.2 X 11



COPYRIGHT © SEPTEMBER, 2024 BY GRIZZLY INDUSTRIAL, INC.
WARNING: NO PORTION OF THIS MANUAL MAY BE REPRODUCED IN ANY SHAPE OR FORM WITHOUT THE WRITTEN APPROVAL OF GRIZZLY INDUSTRIAL, INC.
 #JA23357 PRINTED IN TAIWAN

READ THIS FIRST



Model G1033X

IMPORTANT UPDATE

For Machines Mfd. Since 09/24
and Owner's Manual Revised 09/19

For questions or help with this product contact Tech Support at (570) 546-9663 or techsupport@grizzly.com

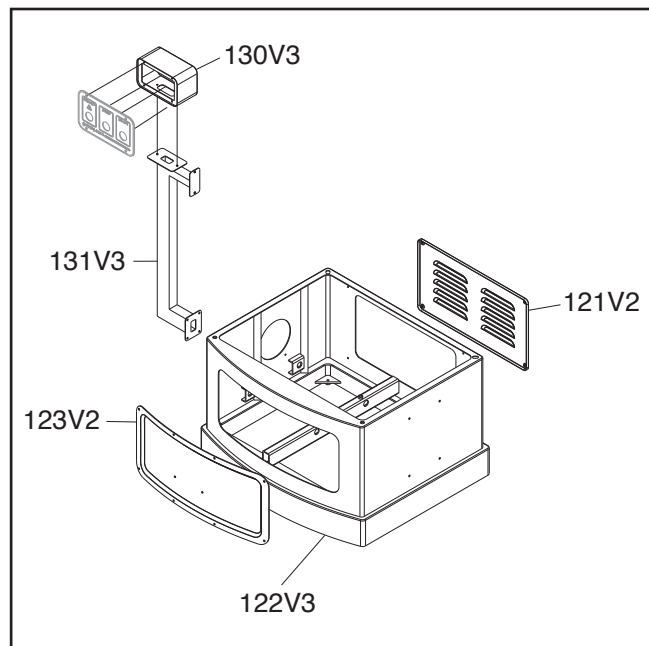
The following changes were recently made since the owner's manual was printed:

- Labels and parts have changed.

Aside from this information, all other content in the owner's manual applies and **MUST** be read and understood for your own safety. **IMPORTANT: Keep this update with the owner's manual for future reference.**

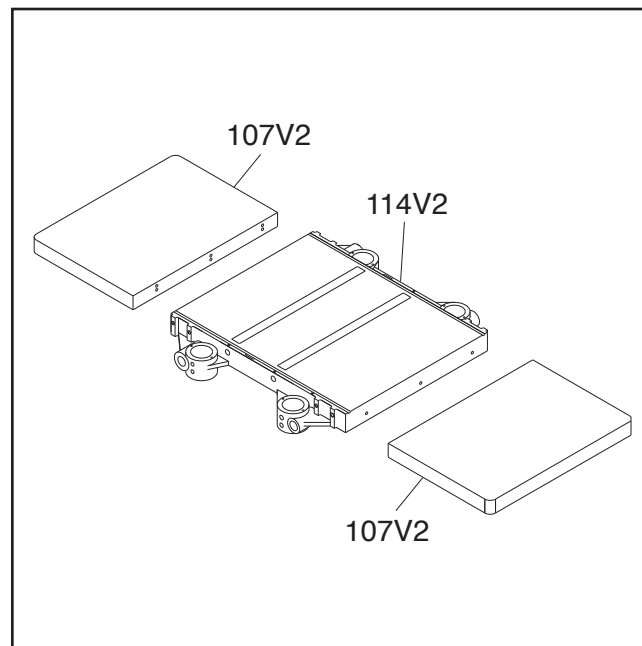
For questions or help, contact our Tech Support at (570) 546-9663 or techsupport@grizzly.com.

Revised Stand Parts



REF	PART #	DESCRIPTION
121V2	P1033X121V2	MOTOR ACCESS PANEL V2.09.24
122V3	P1033X122V3	CABINET STAND V3.09.24
123V2	P1033X123V2	FRONT COVER V2.09.24
130V3	P1033X130V3	SWITCH BOX V3.09.24
131V3	P1033X131V3	SWITCH PEDESTAL V3.09.24

Revised Table Parts

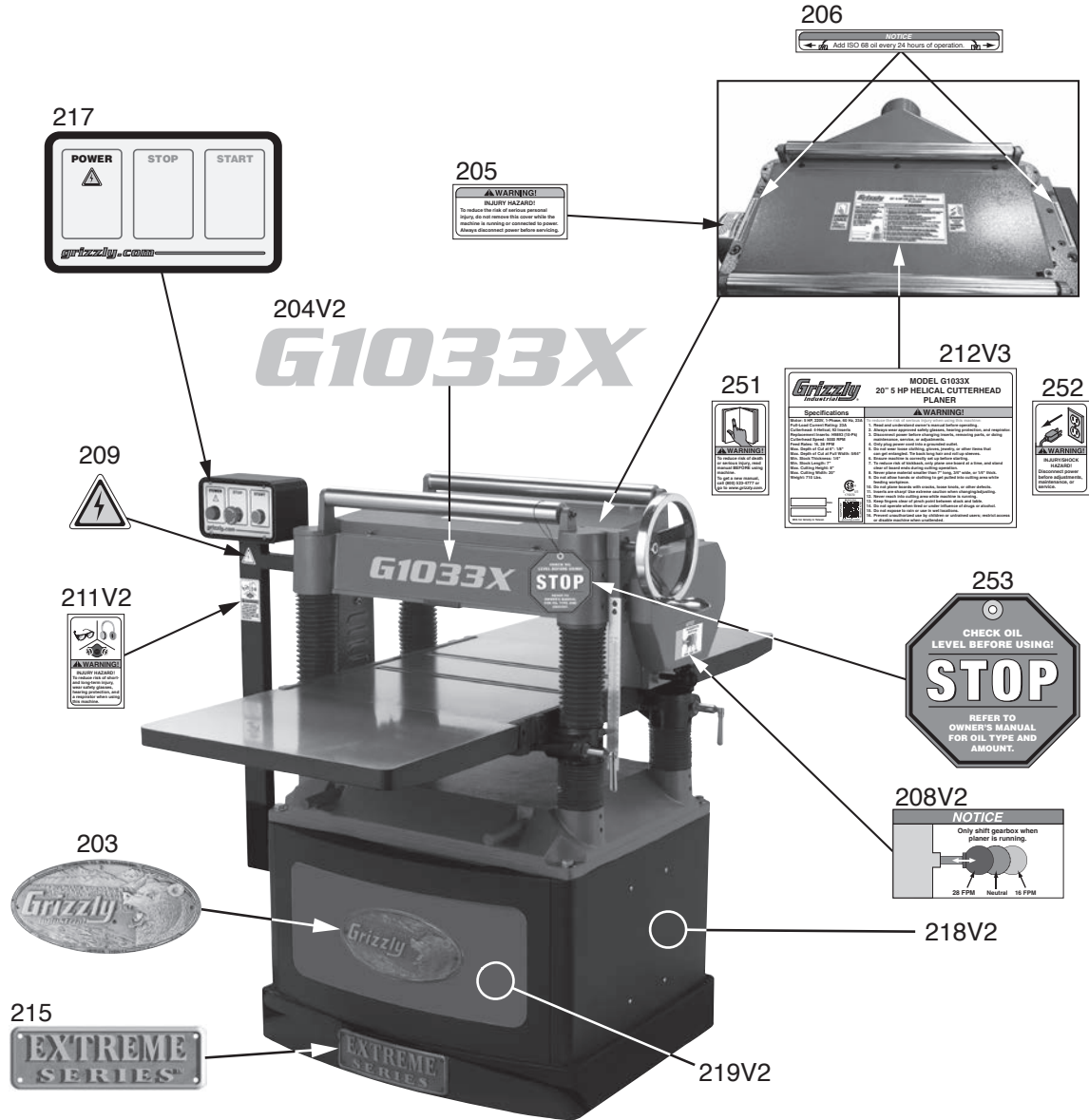


REF	PART #	DESCRIPTION
107V2	P1033X107V2	EXTENSION WING V2.09.24
114V2	P1033X114V2	MIDDLE TABLE V2.09.24



COPYRIGHT © AUGUST, 2024 BY GRIZZLY INDUSTRIAL, INC.
WARNING: NO PORTION OF THIS MANUAL MAY BE REPRODUCED IN ANY SHAPE OR FORM WITHOUT THE WRITTEN APPROVAL OF GRIZZLY INDUSTRIAL, INC.
#JA23313 PRINTED IN TAIWAN

G1033X Labels & Cosmetics



REF	PART #	DESCRIPTION
203	P1033X203	GRIZZLY NAMEPLATE
204V2	P1033X204V2	MODEL NUMBER LABEL V2.09.24
205	P1033X205	WARNING LABEL-DO NOT REMOVE COVER
206	P1033X206	LUBRICATION NOTICE
208V2	P1033X208V2	GEARBOX SHIFT WARNING V2.02.19
209	P1033X209	ELECTRICITY LABEL
211V2	P1033X211V2	EYE/EAR/LUNG PROTECTION LABEL V2.03.19
212V3	P1033X212V3	MACHINE ID LABEL V3.04.19

REF	PART #	DESCRIPTION
215	P1033X215	EXTREME SERIES PLATE
217	P1033X217	CONTROL PANEL LABEL
218V2	P1033X218V2	TOUCH-UP PAINT, GLOSSY BLACK V2.09.24
219V2	P1033X219V2	TOUCH-UP PAINT, GRIZZLY GREEN V2.09.24
251	P1033X251	READ MANUAL LABEL
252	P1033X252	DISCONNECT POWER LABEL
253	P1033X253	STOP OIL FILL TAG

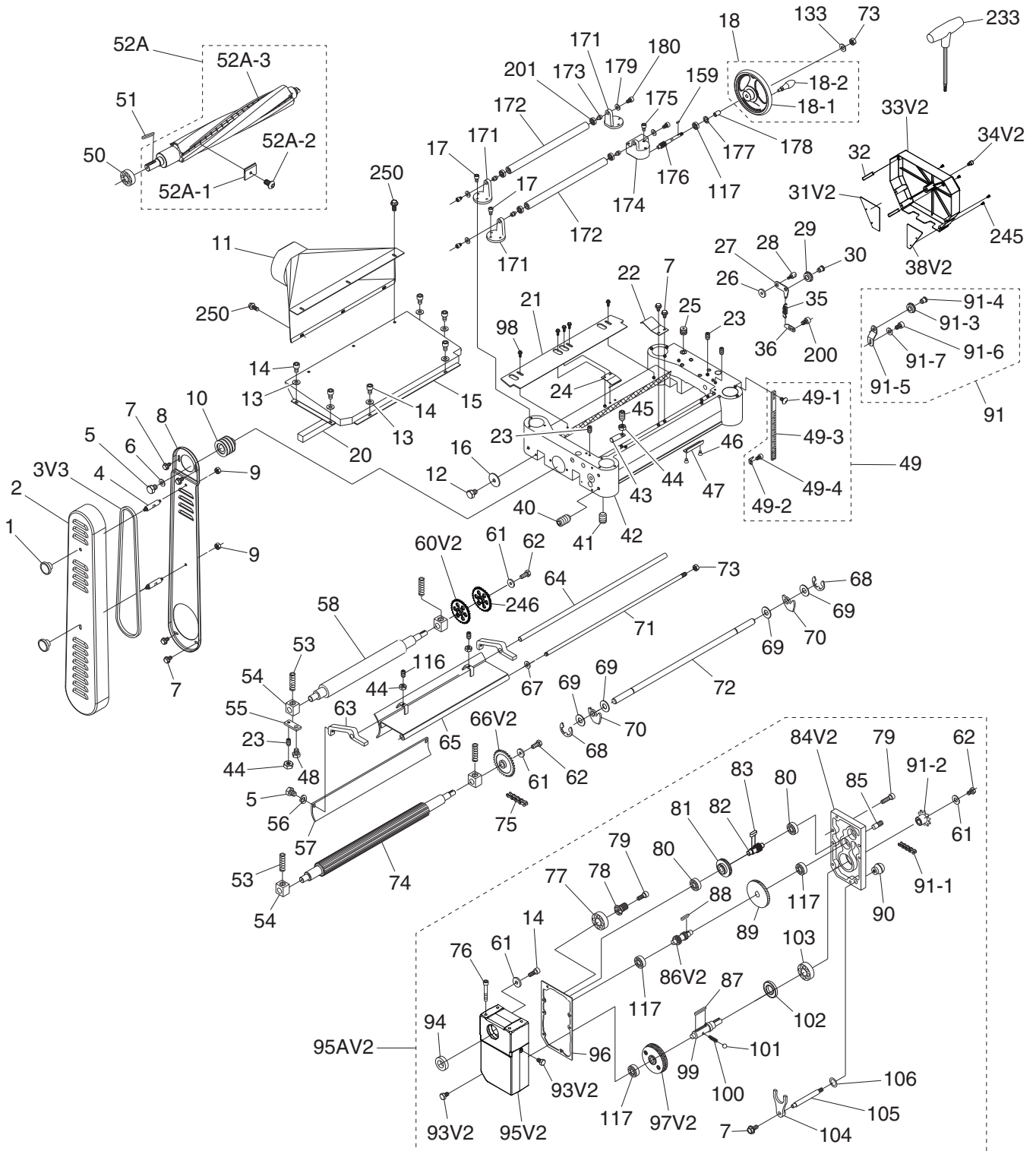
⚠ WARNING

Safety labels help reduce the risk of serious injury caused by machine hazards. If any label comes off or becomes unreadable, the owner of this machine **MUST** replace it in the original location before resuming operations. For replacements, contact (800) 523-4777 or www.grizzly.com.

BUY PARTS ONLINE AT GRIZZLY.COM!
Scan QR code to visit our Parts Store.




G1033X Main



G1033X Main Parts List

REF	PART #	DESCRIPTION
1	P1033X001	KNOB 5/16-18, D1-3/4, ROUND
2	P1033X002	V-BELT COVER
3V3	P1033X003V3	V-BELT M58 3L580 V3.04.19
4	P1033X004	STANDOFF-HEX MM 5/16-18 X 1/2, 2-5/16
5	P1033X005	HEX BOLT M8-1.25 X 20
6	P1033X006	FENDER WASHER 8MM
7	P1033X007	FLANGE SCREW M6-1 X 12
8	P1033X008	PULLEY GUARD
9	P1033X009	HEX NUT 5/16-18
10	P1033X010	CUTTERHEAD PULLEY
11	P1033X011	DUST HOOD 5"
12	P1033X012	HEX BOLT M6-1 X 12
13	P1033X013	FLAT WASHER 6MM
14	P1033X014	CAP SCREW M6-1 X 12
15	P1033X015	UPPER COVER
16	P1033X016	FLAT WASHER 6MM
17	P1033X017	CAP SCREW M6-1 X 16
18	P1033X018	HANDWHEEL ASSEMBLY
18-1	P1033X018-1	HANDWHEEL TYPE-2 200D X 12B-K X 3/8-16
18-2	P1033X018-2	REVOLVING HANDLE 1 X 3-3/8, 3/8-16 X 1/2
20	P1033X020	GASKET
21	P1033X021	CHIP DEFLECTOR
22	P1033X022	SPRING PLATE
23	P1033X023	SET SCREW M6-1 X 16
24	P1033X024	SPRING PLATE
25	P1033X025	OILER SCREW M22-1.5
26	P1033X026	FLAT WASHER 8MM
27	P1033X027	CHAIN TENSIONER
28	P1033X028	SHAFT M22-.5 X 20
29	P1033X029	IDLER WHEEL
30	P1033X030	IDLER SHAFT 19.05 X 21MM
31V2	P1033X031V2	GEARBOX COVER PLATE-B V2.11.18
32	P1033X032	ROLL PIN 6 X 20
33V2	P1033X033V2	DRIVE CHAIN COVER V2.11.18
34V2	P1033X034V2	CAP SCREW M8-1.25 X 10 V2.11.18
35	P1033X035	EXTENSION SPRING 8.5 X 14
36	P1033X036	SPRING BRACKET
38V2	P1033X038V2	GEARBOX COVER PLATE-A V2.11.18
40	P1033X040	SET SCREW M10-1.5 X 12
41	P1033X041	SET SCREW M8-1.25 X 12
42	P1033X042	HEAD CASTING
43	P1033X043	SHAFT 15.875 X 60
44	P1033X044	HEX NUT M6-1
45	P1033X045	SET SCREW M6-1 X 20
46	P1033X046	FLAT HD SCR M5-.8 X 8
47	P1033X047	DEPTH LIMITER
48	P1033X048	HEX BOLT M8-1.25 X 20
49	P1033X049	SCALE ASSEMBLY
49-1	P1033X049-1	PHLP HD SCR M6-1 X 12
49-2	P1033X049-2	POINTER
49-3	P1033X049-3	SCALE
49-4	P1033X049-4	CAP SCREW M5-.8 X 10
50	P1033X050	BALL BEARING 6206ZZ
51	P1033X051	KEY 8 X 8 X 35

REF	PART #	DESCRIPTION
52A	P1033X052A	HELICAL CUTTERHEAD ASSY V2.07.07
52A-1	P1033X052A-1	INSERTS 15 X 15 X 2.5-10 PK
52A-2	P1033X052A-2	FLAT HEAD TORX 10-32 X 1/2
52A-3	P1033X052A-3	HELICAL CUTTERHEAD BODY V2.07.07
53	P1033X053	COMPRESSION SPRING 19.7 X 12
54	P1033X054	BUSHING BLOCK
55	P1033X055	BUSHING BLOCK PLATE
56	P1033X056	LOCK WASHER 8MM
57	P1033X057	PRESSURE BAR
58	P1033X058	OUTFEED ROLLER
60V2	P1033X060V2	SPROCKET 31T V2.05.18
61	P1033X061	FLAT WASHER 6MM
62	P1033X062	HEX BOLT M6-1 X 16
63	P1033X063	BRACKET
64	P1033X064	SHAFT 15.875 X 710
65	P1033X065	CHIP BREAKER
66V2	P1033X066V2	SPROCKET 31T V2.05.18
67	P1033X067	EXT RETAINING RING 12MM
68	P1033X068	E-CLIP 15MM
69	P1033X069	SPACER
70	P1033X070	ANTI-KICKBACK FINGER
71	P1033X071	LOCK ROD
72	P1033X072	SHAFT 19.95 X 680
73	P1033X073	HEX NUT M12-1.75
74	P1033X074	INFEED ROLLER
75	P1033X075	CHAIN
76	P1033X076	CAP SCREW M8-1.25 X 50
77	P1033X077	BALL BEARING 6204ZZ
78	P1033X078	GEAR 16T
79	P1033X079	CAP SCREW M6-1 X 25
80	P1033X080	BALL BEARING 6201ZZ
81	P1033X081	GEAR 47T
82	P1033X082	GEARED SHAFT 18T
83	P1033X083	KEY 5 X 5 X 12
84V2	P1033X084V2	GEARBOX COVER V2.11.18
85	P1033X085	LOCATING PIN 8 X 7.55 X 7.95
86V2	P1033X086V2	GEAR 28T/18T 2-SPEED V2.02.19
87	P1033X087	KEY 6 X 6 X 40
88	P1033X088	KEY 5 X 5 X 10
89	P1033X089	GEAR 71T
90	P1033X090	KNOB 3/8-16, D1-5/16, BALL
91	P1033X091	SPROCKET & CHAIN ASSY
91-1	P1033X091-1	CHAIN
91-2	P1033X091-2	SPROCKET
91-3	P1033X091-3	OUTER CHAIN TENSIONER
91-4	P1033X091-4	SHAFT 19.05 X 21
91-5	P1033X091-5	BRACKET
91-6	P1033X091-6	CAP SCREW M6-1 x 35
91-7	P1033X091-7	FLAT WASHER 6MM
93V2	P1033X093V2	OIL PLUG 1/4 NPT X 3/4" V2.11.18
94	P1033X094	OIL SEAL 28 X 40 X 8
95V2	P1033X095V2	GEARBOX V2.11.18
95AV2	P1033X095AV2	GEARBOX ASSY V2.11.18
96	P1033X096	GASKET



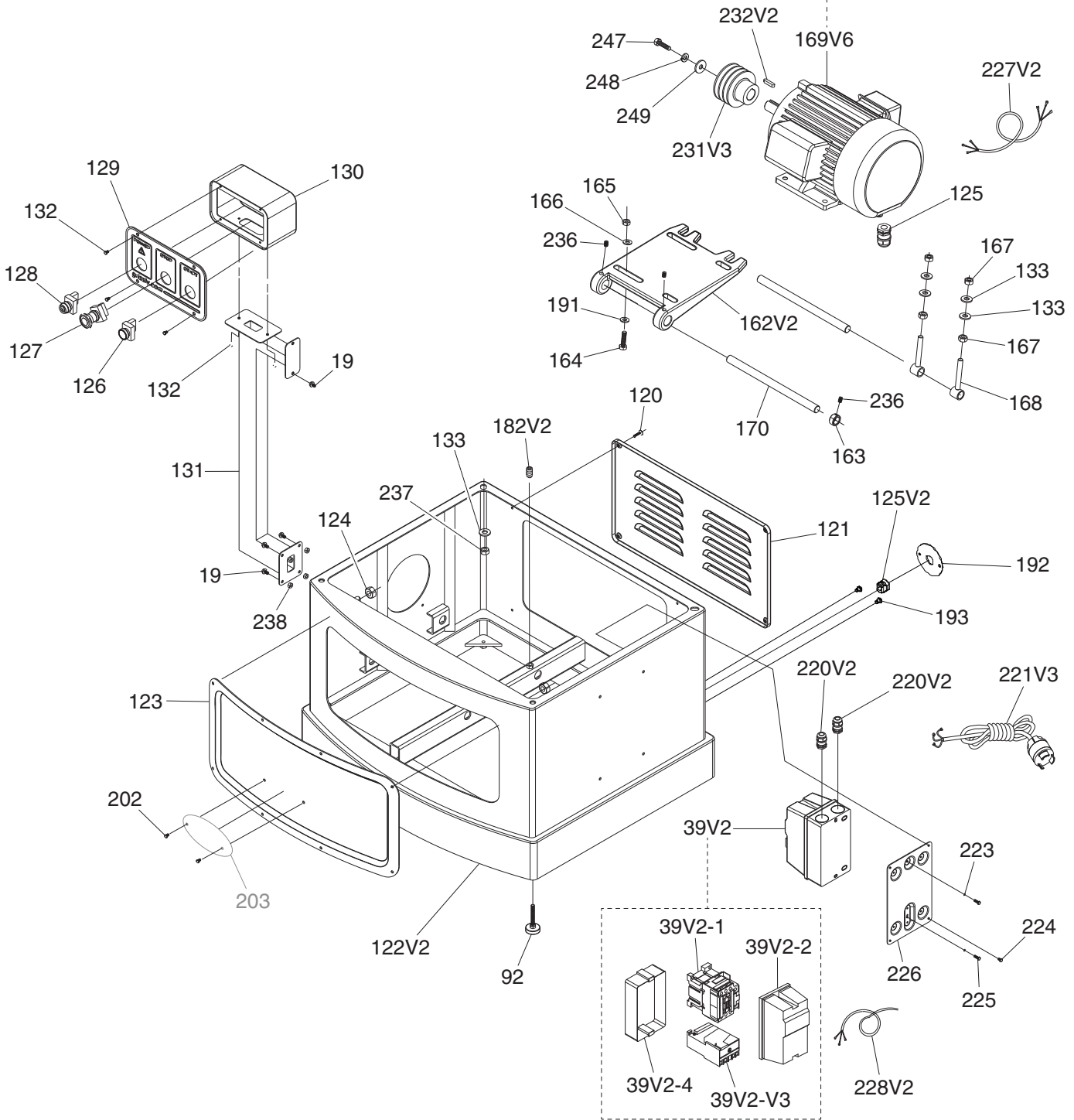
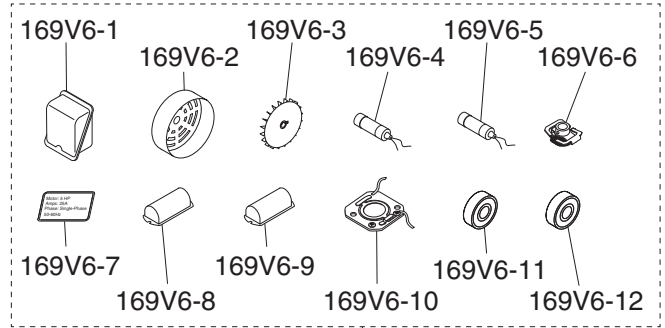
G1033X Main Parts List (Cont.)

REF	PART #	DESCRIPTION
97V2	P1033X097V2	COMBO GEAR 86T/96T V2.02.19
98	P1033X098	FLANGE SCREW M6-1 X 16
99	P1033X099	SHAFT 20 X 106
100	P1033X100	COMPRESSION SPRING 5.9 X 9
101	P1033X101	STEEL BALL 6MM
102	P1033X102	OIL SEAL 25 X 47 X 6
103	P1033X103	BALL BEARING 6204ZZ
104	P1033X104	SHIFTER
105	P1033X105	SHIFTING SHAFT
106	P1033X106	O-RING 12 X 2.4
116	P1033X116	SET SCREW M6-1 X 12
117	P1033X117	BALL BEARING 6201ZZ
133	P1033X133	FLAT WASHER 12MM
159	P1033X159	KEY 4 X 4 X 10
171	P1033X171	RETURN ROLLER BRACKET

REF	PART #	DESCRIPTION
172	P1033X172	RETURN ROLLER
173	P1033X173	BEARING SHAFT
174	P1033X174	WORM GEAR HOUSING
175	P1033X175	CAP SCREW M6-1 X 50
176	P1033X176	WORM SHAFT
177	P1033X177	INT RETAINING RING 32MM
178	P1033X178	COLLAR
179	P1033X179	FLAT WASHER 6MM
180	P1033X180	CAP SCREW M6-1 X 10
200	P1033X200	CAP SCREW M6-1 X 10
201	P1033X201	BALL BEARING 6202ZZ
233	P1033X233	T-HANDLE T-25 TORX DRIVER
245	P1033X245	PHLP HD SCR M4-.7 X 8
246	P1033X246	SPROCKET 31T
250	P1033X250	FLANGE BOLT M6-1 X 12



G1033X Stand & Motor



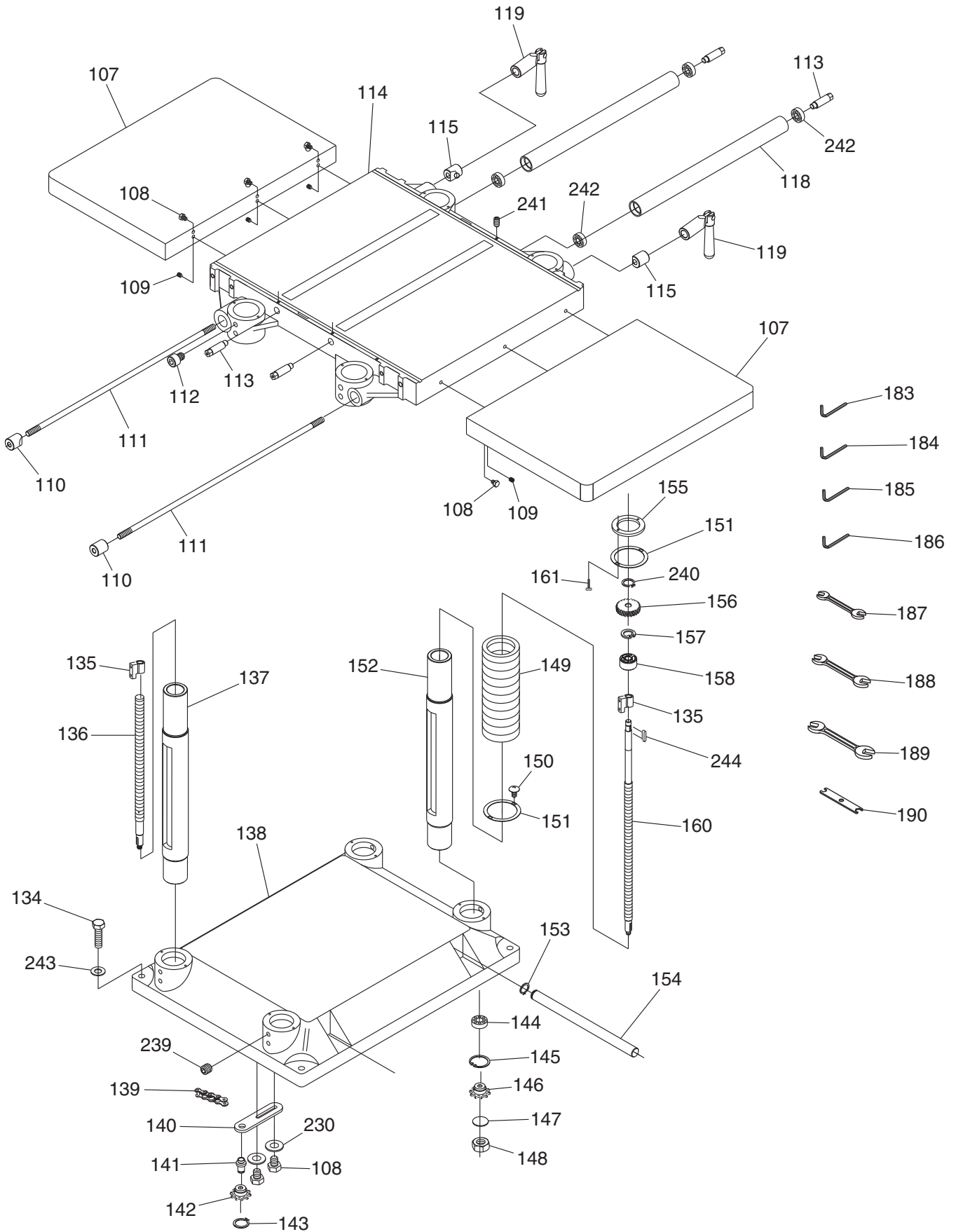
G1033X Stand & Motor Parts List

REF	PART #	DESCRIPTION
19	P1033X019	FLANGE SCREW M6-1 X 12
39V2	P1033X039V2	MAGNETIC SWITCH SDE MPE-30 V2.04.19
39V2-1	P1033X039V2-1	CONTACTOR SDE MA-30 220-240V
39V2-2	P1033X039V2-2	MAGNETIC SWITCH COVER (FRONT)
39V2-3	P1033X039V2-3	OL RELAY SDE RA-30 22-34A
39V2-4	P1033X039V2-4	MAGNETIC SWITCH COVER (REAR)
92	P1033X092	FOOT
120	P1033X120	FLAT HD SCR M6-1 X 20
121	P1033X121	MOTOR ACCESS PANEL
122V2	P1033X122V2	CABINET STAND V2.04.19
123	P1033X123	CABINET STAND FRONT COVER
124	P1033X124	HEX NUT M5-.8
125	P1033X125	STRAIN RELIEF TYPE-3 M25-1.5
125V2	P1033X125V2	STRAIN RELIEF TYPE-1 3/4 V2.04.19
126	P1033X126	START SWITCH
127	P1033X127	E-STOP BUTTON RENVY R9C01VN
128	P1033X128	POWER INDICATOR LIGHT 220V 22MM RED
129	P1033X129	SWITCH PANEL
130	P1033X130	SWITCH BOX
131	P1033X131	SWITCH PEDESTAL
132	P1033X132	PHLP HD SCR M5-.8 X 10
133	P1033X133	FLAT WASHER 12MM
162V2	P1033X162V2	MOTOR MOUNT PLATE V2.04.19
163	P1033X163	COLLAR
164	P1033X164	HEX BOLT M8-1.25 X 40
165	P1033X165	HEX NUT M8-1.25
166	P1033X166	FLAT WASHER 8MM
167	P1033X167	HEX NUT M12-1.75
168	P1033X168	ROD END BOLT M12-1.75 X 120, 25.4
169V6	P1033X169V6	MOTOR 5HP 230V 1-PH V6.04.19
169V6-1	P1033X169V6-1	MOTOR JUNCTION BOX
169V6-2	P1033X169V6-2	MOTOR FAN COVER

REF	PART #	DESCRIPTION
169V6-3	P1033X169V6-3	MOTOR FAN
169V6-4	P1033X169V6-4	S CAPACITOR 600M 125V 1-3/4 X 3-5/16
169V6-5	P1033X169V6-5	R CAPACITOR 60M 350V 1-3/4 X 4-5/16
169V6-6	P1033X169V6-6	CENTRIFUGAL SWTICH
169V6-7	P1033X169V6-7	MOTOR LABEL
169V6-8	P1033X169V6-8	CAPACITOR COVER (START)
169V6-9	P1033X169V6-9	CAPACITOR COVER (RUN)
169V6-10	P1033X169V6-10	CONTACT PLATE
169V6-11	P1033X169V6-11	BALL BEARING 6203ZZ (REAR)
169V6-12	P1033X169V6-12	BALL BEARING 6205ZZ (FRONT)
170	P1033X170	PLATE CONNECTING ROD
182V2	P1033X182V2	SET SCREW M8-1.25 X 16 (NYLOCK) V2.04.19
191	P1033X191	FLAT WASHER 8MM
192	P1033X192	STRAIN RELIEF MOUNTING PLATE
193	P1033X193	PHLP HD SCR M6-1 X 8
202	P1033X202	PHLP HD SCR M4-.7 X 10
220V2	P1033X220V2	STRAIN RELIEF TYPE-3 M25-1.5 V2.04.19
221V3	P1033X221V3	POWER CORD 12G 3W 145" L6-30P V3.04.19
223	P1033X223	EXT TOOTH WASHER 5MM
224	P1033X224	PHLP HD SCR M5-.8 X 10
225	P1033X225	PHLP HD SCR M5-.8 X 15
226	P1033X226	SWITCH PANEL
227V2	P1033X227V2	MOTOR CORD 12G 3W 37" V2.04.19
228V2	P1033X228V2	SWITCH CORD 18G 5W 72" V2.04.19
231V3	P1033X231V3	MOTOR PULLEY V3.04.19
232V2	P1033X232V2	KEY 5 X 5 X 30 V2.04.19
236	P1033X236	SET SCREW M8-1.25 X 12
237	P1033X237	HEX NUT M12-1.75
238	P1033X238	HEX NUT M6-1
247	P1033X247	HEX BOLT M8-1.25 X 20
248	P1033X248	LOCK WASHER 8MM
249	P1033X249	FENDER WASHER 8MM



G1033X Table & Base



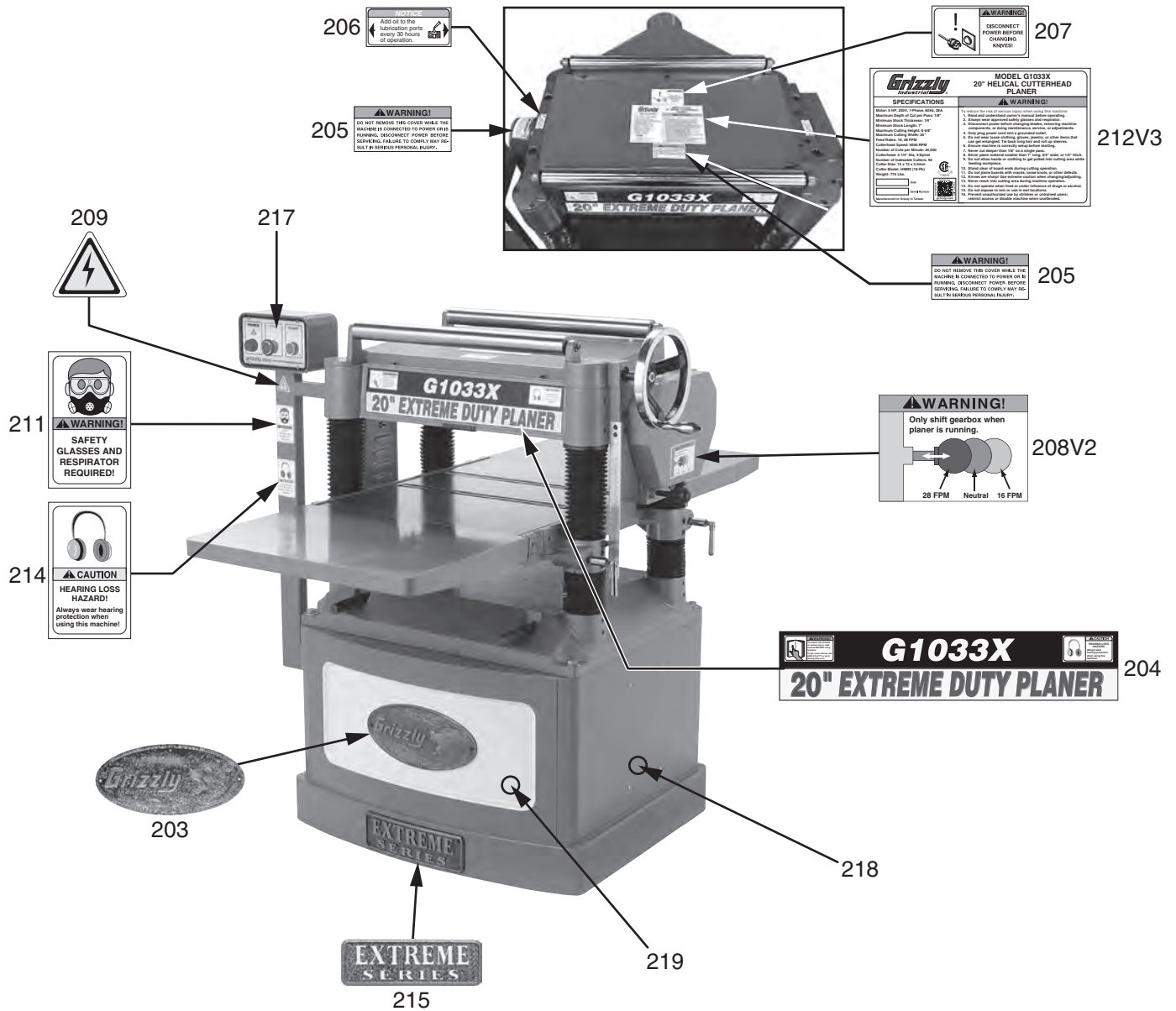
G1033X Table & Base Parts List

REF	PART #	DESCRIPTION
107	P1033X107	EXTENSION WING
108	P1033X108	HEX BOLT M8-1.25 X 25
109	P1033X109	SET SCREW M8-1.25 X 12
110	P1033X110	THREADED GIB
111	P1033X111	LOCK ROD
112	P1033X112	CAP SCREW M8-1.25 X 16
113	P1033X113	ECCENTRIC SHAFT
114	P1033X114	MIDDLE TABLE
115	P1033X115	GIB
118	P1033X118	TABLE ROLLER
119	P1033X119	LOCK HANDLE M12-1.75
134	P1033X134	HEX BOLT M12-1.75 X 50
135	P1033X135	LEADSCREW NUT 15.5 X 41.5
136	P1033X136	LEADSCREW M10 X 1.25 X 400, SECONDARY
137	P1033X137	COLUMN, SECONDARY
138	P1033X138	BASE
139	P1033X139	CHAIN
140	P1033X140	IDLER BRACKET
141	P1033X141	IDLER SHAFT 15 X 34MM
142	P1033X142	SPROCKET
143	P1033X143	EXT RETAINING RING 15MM
144	P1033X144	BALL BEARING 6202ZZ
145	P1033X145	INT RETAINING RING 35MM
146	P1033X146	SPROCKET
147	P1033X147	FLAT WASHER 10MM
148	P1033X148	HEX NUT M10-1.25
149	P1033X149	DUST BOOT

REF	PART #	DESCRIPTION
150	P1033X150	PHLP HD SCR M5-.8 X 10
151	P1033X151	DUST BOOT FLANGE
152	P1033X152	COLUMN, PRIMARY
153	P1033X153	EXT RETAINING RING 17MM
154	P1033X154	LIFTING BAR
155	P1033X155	DUST BOOT FLANGE RING
156	P1033X156	WORM GEAR
157	P1033X157	INT RETAINING RING 38MM
158	P1033X158	BUSHING 14 X 20
160	P1033X160	LEADSCREW M10 X 1.25 X 582, PRIMARY
161	P1033X161	PHLP HD SCR M5-.8 X 8
183	P1033X183	HEX WRENCH 3MM
184	P1033X184	HEX WRENCH 4MM
185	P1033X185	HEX WRENCH 5MM
186	P1033X186	HEX WRENCH 6MM
187	P1033X187	WRENCH 8 X 10MM OPEN-ENDS
188	P1033X188	WRENCH 12 X 14MM OPEN-ENDS
189	P1033X189	WRENCH 17 X 19MM OPEN-ENDS
190	P1033X190	FLAT WRENCH 10 X 13MM OPEN-ENDS
230	P1033X230	FLAT WASHER 8MM
239	P1033X239	SET SCREW M10-1.5 X 12
240	P1033X240	EXT RETAINING RING 12MM
241	P1033X241	SET SCREW M6-1 X 12
242	P1033X242	BALL BEARING 6201ZZ
243	P1033X243	FLAT WASHER 12MM
244	P1033X244	KEY 4 X 4 X 10



G1033X Labels & Cosmetics



REF	PART #	DESCRIPTION
203	P1033X203	GRIZZLY NAMEPLATE
204	P1033X204	MODEL NUMBER LABEL
205	P1033X205	WARNING LABEL-DO NOT REMOVE COVER
206	P1033X206	LUBRICATION NOTICE
207	P1033X207	DISCONNECT POWER LABEL
208V2	P1033X208V2	GEARBOX SHIFT WARNING V2.02.19
209	P1033X209	ELECTRICITY LABEL

REF	PART #	DESCRIPTION
211	P1033X211	RESPIRATOR/GLASSES WARNING
212V3	P1033X212V3	MACHINE ID LABEL V3.04.19
214	P1033X214	EAR PROTECTION WARNING
215	P1033X215	EXTREME SERIES PLATE
217	P1033X217	CONTROL PANEL LABEL
218	P1033X218	TOUCH-UP PAINT, GRIZZLY GREEN
219	P1033X219	TOUCH-UP PAINT, GRIZZLY PUTTY

⚠ WARNING

Safety labels help reduce the risk of serious injury caused by machine hazards. If any label comes off or becomes unreadable, the owner of this machine **MUST** replace it in the original location before resuming operations. For replacements, contact (800) 523-4777 or www.grizzly.com.

