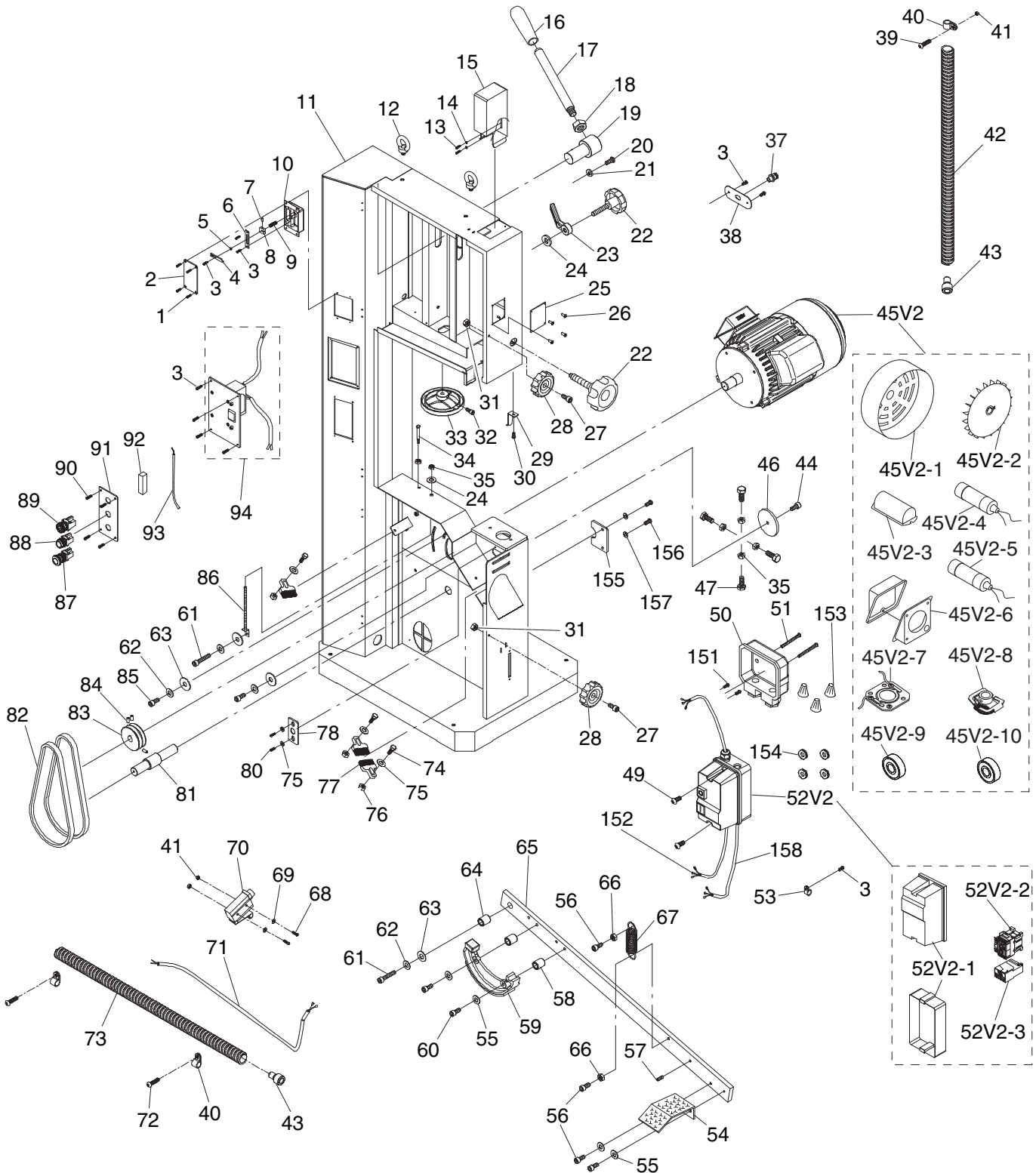


SECTION 9: PARTS

We do our best to stock replacement parts when possible, but we cannot guarantee that all parts shown are available for purchase. Call (800) 523-4777 or visit www.grizzly.com/parts to check for availability.

Frame



BUY PARTS ONLINE AT GRIZZLY.COM!
Scan QR code to visit our Parts Store.




Frame Parts List

REF	PART #	DESCRIPTION
1	P0701001	TAP SCREW M4 X 8
2	P0701002	TENSION SCALE PLATE
3	P0701003	TAP SCREW M4 X 10
4	P0701004	TENSION POINTER
5	P0701005	FLAT WASHER 4MM
6	P0701006	TENSION SCALE BRACKET
7	P0701007	ROLL PIN 3 X 12
8	P0701008	TENSION POINTER BRACKET
9	P0701009	TORSION SPRING
10	P0701010	TENSION SCALE BOX
11	P0701011	FRAME
12	P0701012	LIFTING EYE BOLT M12-1.75 X 20
13	P0701013	SHOULDER SCREW M4-.7 X 6
14	P0701014	PLASTIC FLAT WASHER 13 X 6 X 1.5
15	P0701015	GUIDE POST TOP CAP
16	P0701016	KNOB
17	P0701017	LEVER
18	P0701018	HEX NUT M16-2
19	P0701019	LEVER HUB
20	P0701020	CAP SCREW M10-1.5 X 20
21	P0701021	LOCK WASHER 10MM
22	P0701022	STAR KNOB BOLT M10-1.5 X 55
23	P0701023	LEVER
24	P0701024	FLAT WASHER 10MM
25	P0701025	CLEAR PLASTIC WINDOW
26	P0701026	RIVET 3.2 X 10
27	P0701027	CAP SCREW M6-1 X 20
28	P0701028	STAR KNOB
29	P0701029	POINTER
30	P0701030	FLANGE SCREW M5-.8 X 10
31	P0701031	LOCK NUT M6-1
32	P0701032	CAP SCREW M6-1 X 25
33	P0701033	HANDWHEEL
34	P0701034	HEX BOLT M10-1.5 X 110
35	P0701035	HEX NUT M10-1.5
36	P0701036	FLAT WASHER 10MM
37	P0701037	STRAIN RELIEF
38	P0701038	PLATE
39	P0701039	PHLP HD SCR M4-.7 X 16
40	P0701040	CORD CLAMP 5/8"
41	P0701041	HEX NUT M4-.7
42	P0701042	FLEXIBLE TUBE 1/2" X 43-1/2"
43	P0701043	STRAIN RELIEF
44	P0701044	CAP SCREW M8-1.25 X 25
45V2	P0701045V2	MOTOR 5HP 230V 1PH V2.03.12

REF	PART #	DESCRIPTION
45V2-1	P0701045V2-1	MOTOR FAN COVER
45V2-2	P0701045V2-2	MOTOR FAN
45V2-3	P0701045V2-3	CAPACITOR COVER
45V2-4	P0701045V2-4	S CAPACITOR 300M 250V
45V2-5	P0701045V2-5	R CAPACITOR 45M 450V
45V2-6	P0701045V2-6	MOTOR WIRING JUNCTION BOX
45V2-7	P0701045V2-7	CONTACT PLATE
45V2-8	P0701045V2-8	CENTRIFUGAL SWITCH 1720
45V2-9	P0701045V2-9	BALL BEARING 6206 2RS
45V2-10	P0701045V2-10	BALL BEARING 6204ZZ
46	P0701046	WHEEL ADJUSTMENT BRACKET
47	P0701047	HEX BOLT M10-1.5 X 35
50	P0701050	JUNCTION BOX
51	P0701051	FLANGE SCREW M5-.8 X 50
52V2	P0701052V2	MAG SWITCH ASSY MPE-30 V2.03.12
52V2-1	P0701052V2-1	MAG SWITCH HOUSING
52V2-2	P0701052V2-2	CONTACTOR SDE MA-30 220V-240V
52V2-3	P0701052V2-3	OL RELAY SDE RA-30A 18-26A
53	P0701053	CORD CLAMP 1/2"
54	P0701054	BRAKE PEDAL
55	P0701055	LOCK WASHER 6MM
56	P0701056	CAP SCREW M6-1 X 16
57	P0701057	LOCKING SET SCREW M7-1 X 10
58	P0701058	BUSHING
59	P0701059	BRAKE SHOE
60	P0701060	CAP SCREW M6-1 X 25
61	P0701061	CAP SCREW M8-1.25 X 30
62	P0701062	LOCK WASHER 8MM
63	P0701063	FLAT WASHER 8MM
64	P0701064	BUSHING
65	P0701065	BRAKE LEVER
66	P0701066	HEX NUT M6-1
67	P0701067	EXTENSION SPRING
68	P0701068	PHLP HD SCR M4-.7 X 30
69	P0701069	FLAT WASHER 4MM
70	P0701070	BRAKE SWITCH
71	P0701071	BRAKE SWITCH CORD
72	P0701072	TAP SCREW M4 X 8
73	P0701073	FLEXIBLE TUBE 1/2 X 44
74	P0701074	HEX BOLT M6-1 X 25
75	P0701075	FLAT WASHER 6MM
76	P0701076	LOCK NUT M6-1
77	P0701077	WHEEL BRUSH
78	P0701078	LOWER WHEEL SUPPORT



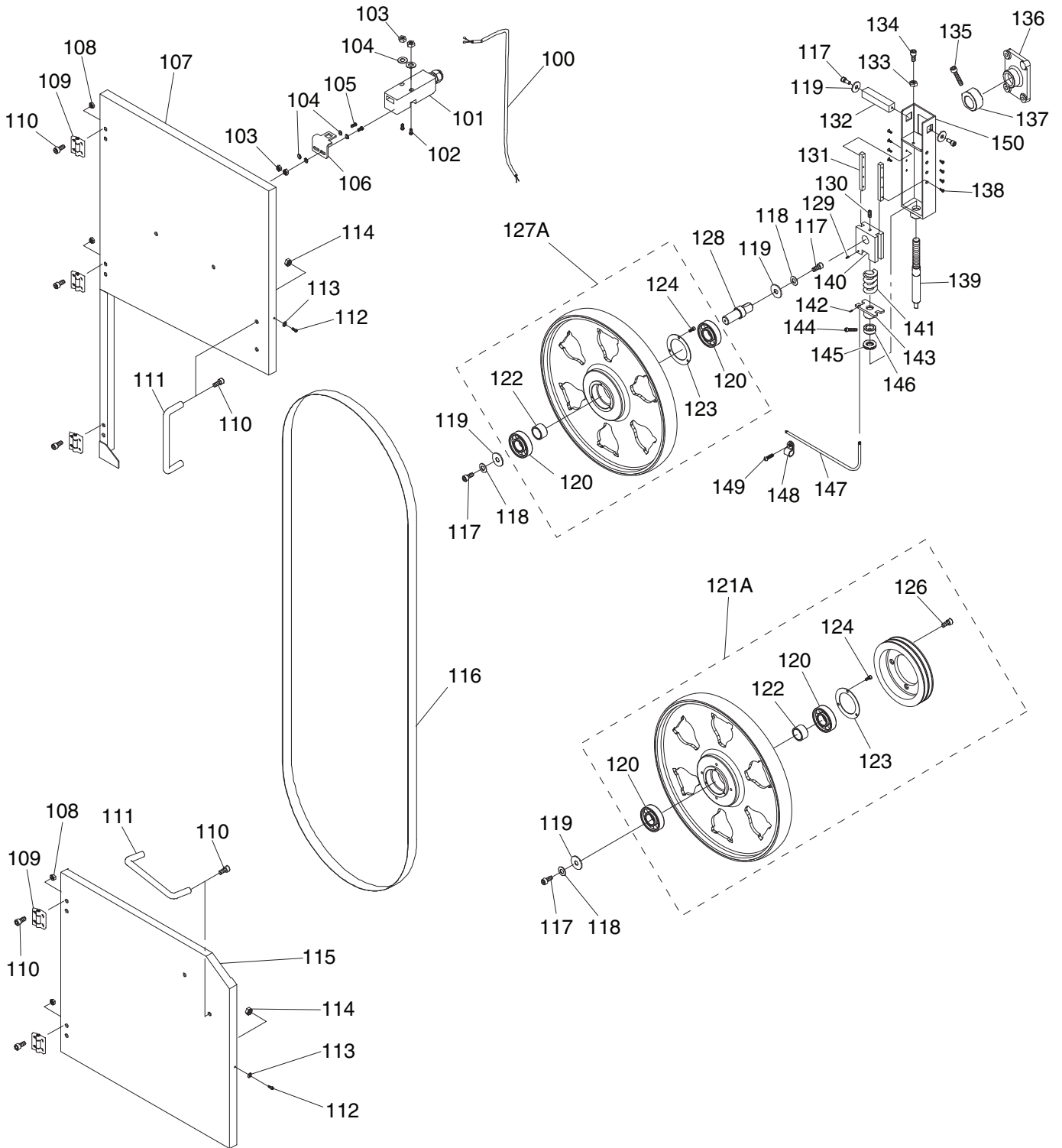
Frame Parts List (Cont.)

REF	PART #	DESCRIPTION
80	P0701080	CAP SCREW M6-1 X 16
81	P0701081	LOWER WHEEL SHAFT
82	P0701082	V-BELT 17-330, A32
83	P0701083	MOTOR PULLEY
84	P0701084	SET SCREW M6-1 X 12
85	P0701085	CAP SCREW M8-1.25 X 25
86	P0701086	BRUSH ADJUSTMENT STUD
87	P0701087	ON BUTTON
88	P0701088	OFF BUTTON
89	P0701089	KEYED POWER SWITCH
90	P0701090	PHLP HD SCR M5-.8 X 10
91	P0701091	CONTROL PANEL

REF	PART #	DESCRIPTION
92	P0701092	CORD CONNECTOR
93	P0701093	CONTROL PANEL CORD
94	P0701094	GUIDE POST ELEVATION SWITCH
151	P0701151	PHLP HD SCR M4-.7 X 10
152	P0701152	MOTOR CORD 12G 3W
153	P0701153	WIRE NUT P3
154	P0701154	EXT TOOTH WASHER 5MM
155	P0701155	ADJUSTMENT PLATE
156	P0701156	HEX BOLT M5-.8 X 12
157	P0701157	FLAT WASHER 5MM
158	P0701158	CONTROL PANEL CORD 12G 4W



Wheels



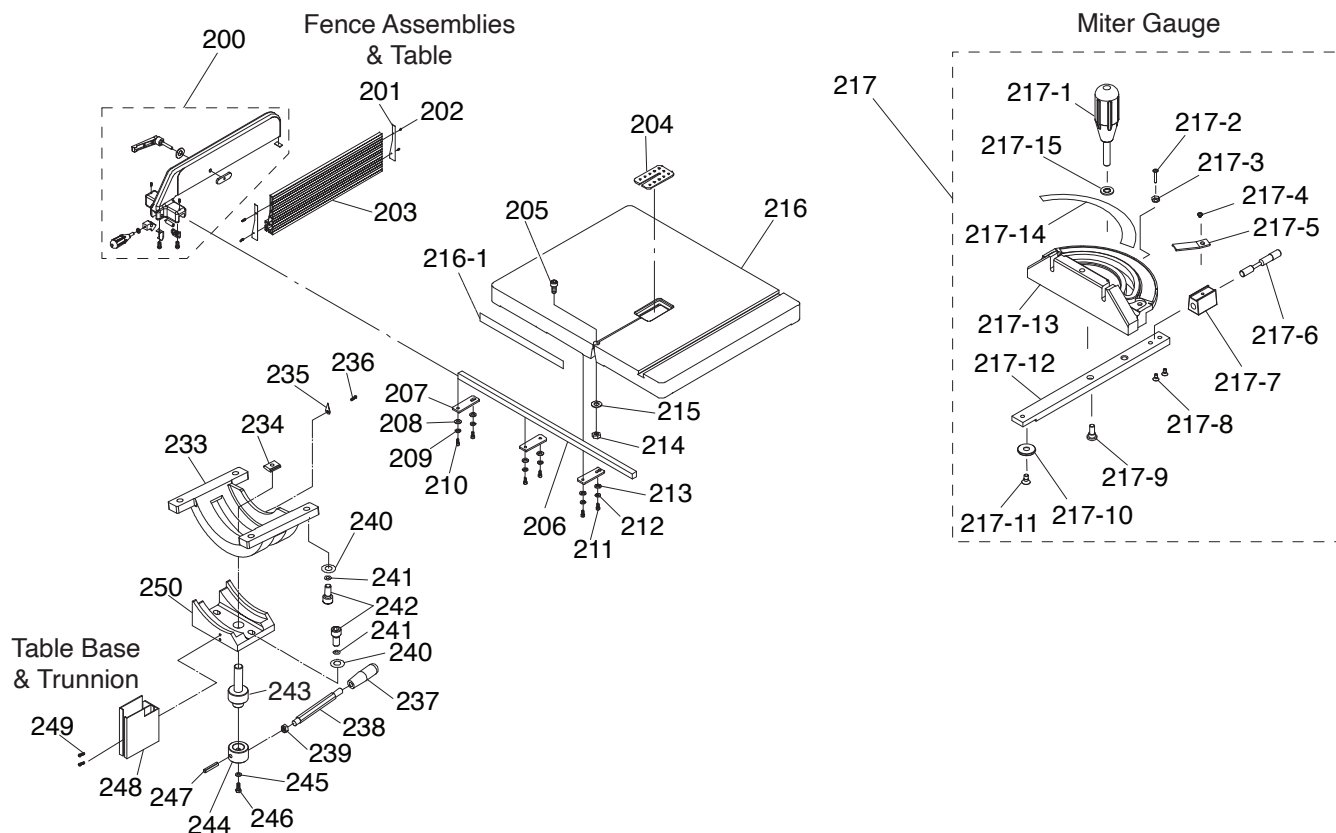
Wheels Parts List

REF	PART #	DESCRIPTION
100	P0701100	DOOR SAFETY SWITCH CORD
101	P0701101	DOOR SAFETY SWITCH
102	P0701102	FLANGE SCREW M4-.7 X 35
103	P0701103	HEX NUT M4-.7
104	P0701104	FLAT WASHER 4MM
105	P0701105	PHLP HD SCR M4-.7 X 10
106	P0701106	DOOR SAFETY SWITCH BRACKET
107	P0701107	UPPER WHEEL DOOR
108	P0701108	FLANGE NUT M5-.8
109	P0701109	DOOR HINGE
110	P0701110	CAP SCREW M5-.8 X 12
111	P0701111	DOOR HANDLE
112	P0701112	CAP SCREW M6-1 X 16
113	P0701113	LOCK WASHER 6MM
114	P0701114	LOCK NUT M6-1
115	P0701115	LOWER WHEEL DOOR
116	P0701116	SAW BLADE 166" X 1-3/8" X 0.035"
117	P0701117	CAP SCREW M8-1.25 X 25
118	P0701118	LOCK WASHER 6MM
119	P0701119	SHAFT FLAT WASHER 8MM
120	P0701120	BALL BEARING 6306-2RS
121A	P0701121A	LOWER WHEEL ASSEMBLY
122	P0701122	BUSHING
123	P0701123	BEARING END CAP
124	P0701124	PHLP HD SCR M6-1 X 16

REF	PART #	DESCRIPTION
126	P0701126	CAP SCREW M8-1.25 X 20
127A	P0701127A	UPPER WHEEL ASSEMBLY
128	P0701128	UPPER WHEEL SHAFT
129	P0701129	SET SCREW M5-.8 X 5
130	P0701130	SET SCREW M10-1.5 X 16
131	P0701131	GIB
132	P0701132	SQUARE SHAFT
133	P0701133	HEX NUT M8-1.25
134	P0701134	CAP SCREW M8-1.25 X 50
135	P0701135	CAP SCREW M8-1.25 X 30
136	P0701136	BRACKET
137	P0701137	CAM
138	P0701138	FLAT HD SCR M5-.8 X 16
139	P0701139	TENSION ADJUSTMENT BOLT
140	P0701140	GUIDE BLOCK
141	P0701141	COMPRESSION SPRING
142	P0701142	SET SCREW M4-.7 X 6
143	P0701143	SPRING PLATE
144	P0701144	CAP SCREW M8-1.25 X 40
145	P0701145	BEARING END CAP
146	P0701146	THRUST BEARING 51105
147	P0701147	TENSION CABLE
148	P0701148	CORD CLAMP 5/16"
149	P0701149	TAP SCREW M4 X 10
150	P0701150	UPPER WHEEL HINGE



Table

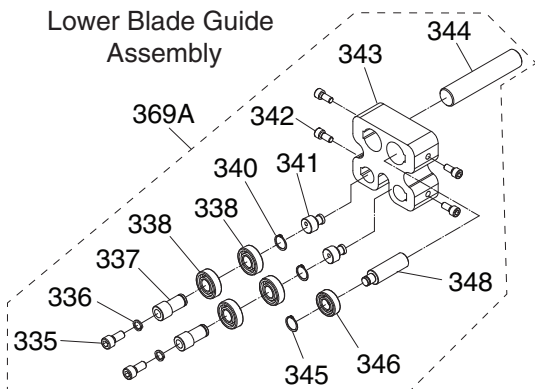
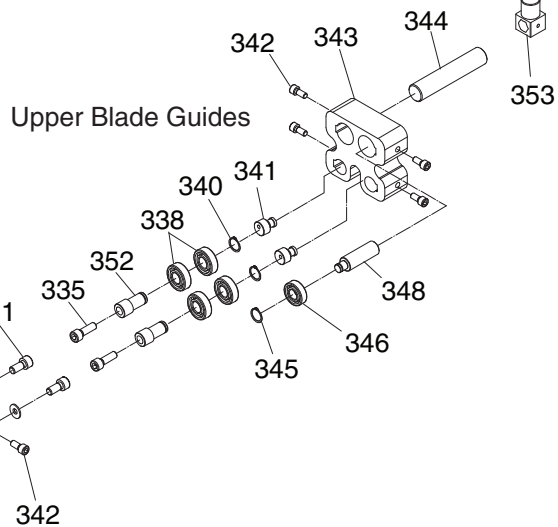
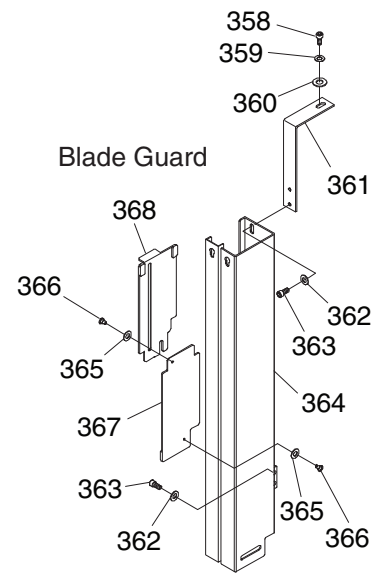
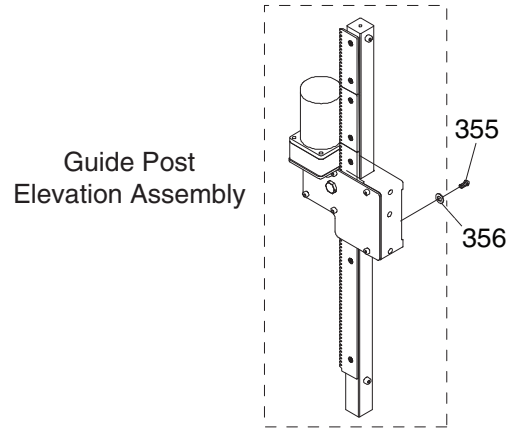
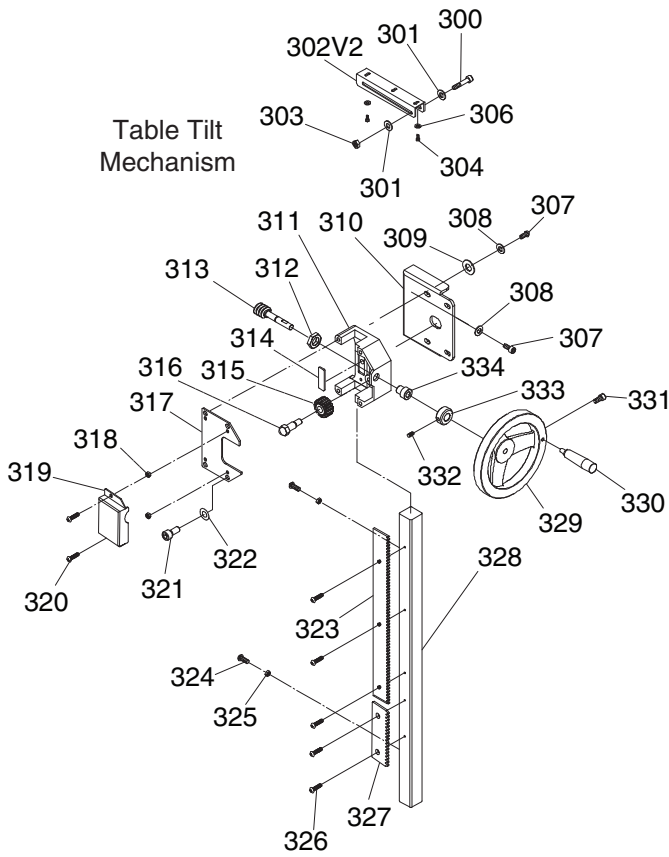


REF	PART #	DESCRIPTION
200	P0701200	FENCE ASSEMBLY
201	P0701201	END CAP
202	P0701202	TAP SCREW M4 X 10
203	P0701203	RESAW FENCE ALUMINUM
204	P0701204	TABLE INSERT
205	P0701205	CAP SCREW M8-1.25 X 50
206	P0701206	FENCE RAIL
207	P0701207	FENCE RAIL PLATE
208	P0701208	FLAT WASHER 6MM
209	P0701209	LOCK WASHER 6MM
210	P0701210	HEX BOLT M6-1 X 20
211	P0701211	HEX BOLT M8-1.25 X 20
212	P0701212	LOCK WASHER 8MM
213	P0701213	FLAT WASHER 8MM
214	P0701214	HEX NUT M8-1.25
215	P0701215	FLAT WASHER 8MM
216	P0701216	TABLE
216-1	P0701216-1	FENCE SCALE
217	P0701217	MITER GAUGE ASSEMBLY
217-1	P0701217-1	MITER HANDLE
217-2	P0701217-2	PHLP HD SCR M4-.7 X 16
217-3	P0701217-3	HEX NUT M4-.7
217-4	P0701217-4	PHLP HD SCR 10-24 X 1/4
217-5	P0701217-5	POINTER
217-6	P0701217-6	INDEX SHAFT
217-7	P0701217-7	INDEX SHAFT BRACKET

REF	PART #	DESCRIPTION
217-8	P0701217-8	PHLP HD SCR 10-24 X 1/4
217-9	P0701217-9	SHOULDER SCREW
217-10	P0701217-10	SLOT WASHER
217-11	P0701217-11	FLAT HD SCR M6-1 X 8
217-12	P0701217-12	GUIDE BAR
217-13	P0701217-13	MITER GAUGE BODY
217-14	P0701217-14	MITER SCALE
217-15	P0701217-15	FLAT WASHER 8MM
233	P0701233	TABLE BASE
234	P0701234	TRUNNION T-NUT
235	P0701235	POINTER
236	P0701236	PHLP HD SCR M4-.7 X 10
237	P0701237	TRUNNION HANDLE M12-1.75
238	P0701238	HANDLE SHAFT
239	P0701239	HEX NUT M12-1.75
240	P0701240	FLAT WASHER 10MM
241	P0701241	LOCK WASHER 10MM
242	P0701242	CAP SCREW M10-1.5 X 35
243	P0701243	PIVOT SHAFT
244	P0701244	LOCK COLLAR
245	P0701245	LOCK WASHER 8MM
246	P0701246	HEX BOLT M8-1.25 X 20
247	P0701247	ROLL PIN 6 X 36
248	P0701248	LOWER BLADE GUARD
249	P0701249	FLANGE BOLT M6-1 X 10
250	P0701250	TRUNNION



Guides



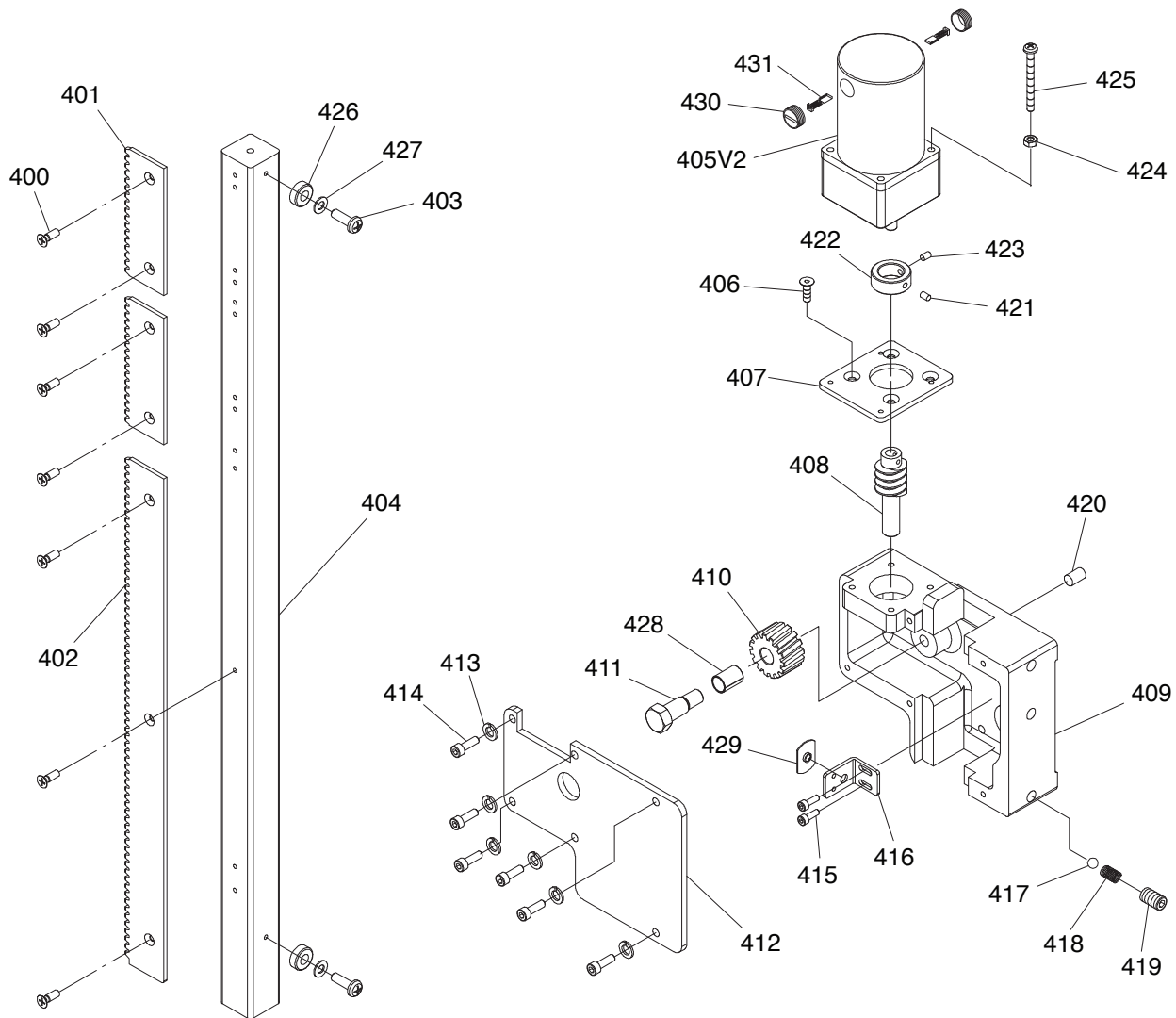
Guides Parts List

REF	PART #	DESCRIPTION
300	P0701300	HEX BOLT M8-1.25 X 55
301	P0701301	FLAT WASHER 8MM
302V2	P0701302V2	SLIDING BRACKET 300MM V2.11.11
303	P0701303	LOCK NUT M8-1.25
304	P0701304	CAP SCREW M6-1 X 10
306	P0701306	FLAT WASHER 6MM
307	P0701307	CAP SCREW M8-1.25 X 25
308	P0701308	LOCK WASHER 8MM
309	P0701309	FLAT WASHER 8MM
310	P0701310	SUPPORT BRACKET
311	P0701311	GUIDE BRACKET
312	P0701312	HEX NUT M16-1.5
313	P0701313	WORM SHAFT
314	P0701314	PLATE
315	P0701315	PINION GEAR
316	P0701316	SHOULDER BOLT
317	P0701317	PROTECTIVE PLATE
318	P0701318	HEX NUT M5-.8
319	P0701319	PROTECTIVE COVER
320	P0701320	FLANGE BOLT M5-.8 X 10
321	P0701321	CAP SCREW M8-1.25 X 16
322	P0701322	LOCK WASHER 8MM
323	P0701323	RACK
324	P0701324	PHLP HD SCR M4-.7 X 10
325	P0701325	HEX NUT M4-.7
326	P0701326	FLAT HD SCR M4-.7 X 10
327	P0701327	RACK EXTENSION
328	P0701328	TILT GUIDE POST
329	P0701329	HANDWHEEL
330	P0701330	HANDWHEEL HANDLE 3/8-16 X 1/2
331	P0701331	CAP SCREW M6-1 X 25
332	P0701332	SET SCREW M5-.8 X 5
333	P0701333	LOCK COLLAR
334	P0701334	BUSHING

REF	PART #	DESCRIPTION
335	P0701335	CAP SCREW M6-1 X 40
336	P0701336	LOCK WASHER 6MM
337	P0701337	STEPPED BUSHING
338	P0701338	BALL BEARING 6202ZZ
339	P0701339	SPACER
340	P0701340	EXT RETAINING RING 15MM
341	P0701341	ECCENTRIC BUSHING
342	P0701342	CAP SCREW M6-1 X 16
343	P0701343	GUIDE BLOCK
344	P0701344	BLADE GUIDE SHAFT
345	P0701345	EXT RETAINING RING 12MM
346	P0701346	BALL BEARING 6201ZZ
347	P0701347	SPACER
348	P0701348	STEPPED BUSHING
349	P0701349	LOWER GUIDE BLOCK BRACKET
350	P0701350	FLAT WASHER 6MM
351	P0701351	CAP SCREW M6-1 X 16
352	P0701352	STEPPED BUSHING
353	P0701353	UPPER GUIDE BLOCK BRACKET
355	P0701355	CAP SCREW M8-1.25 X 35
356	P0701356	FLAT WASHER 8MM
358	P0701358	CAP SCREW M6-1 X 16
359	P0701359	LOCK WASHER 6MM
360	P0701360	FLAT WASHER 6MM
361	P0701361	SUPPORT BRACKET
362	P0701362	FLAT WASHER 6MM
363	P0701363	CAP SCREW M6-1 X 10
364	P0701364	UPPER BLADE GUARD
365	P0701365	PLASTIC FLAT WASHER 13 X 6 X 1.5
366	P0701366	SHOULDER SCREW M4-.7 X 6
367	P0701367	BLADE GUARD COVER EXTERNAL
368	P0701368	BLADE GUARD COVER INTERNAL
369A	P0701369A	LOWER BLADE GUIDE ASSY



Guide Post Elevation Assembly

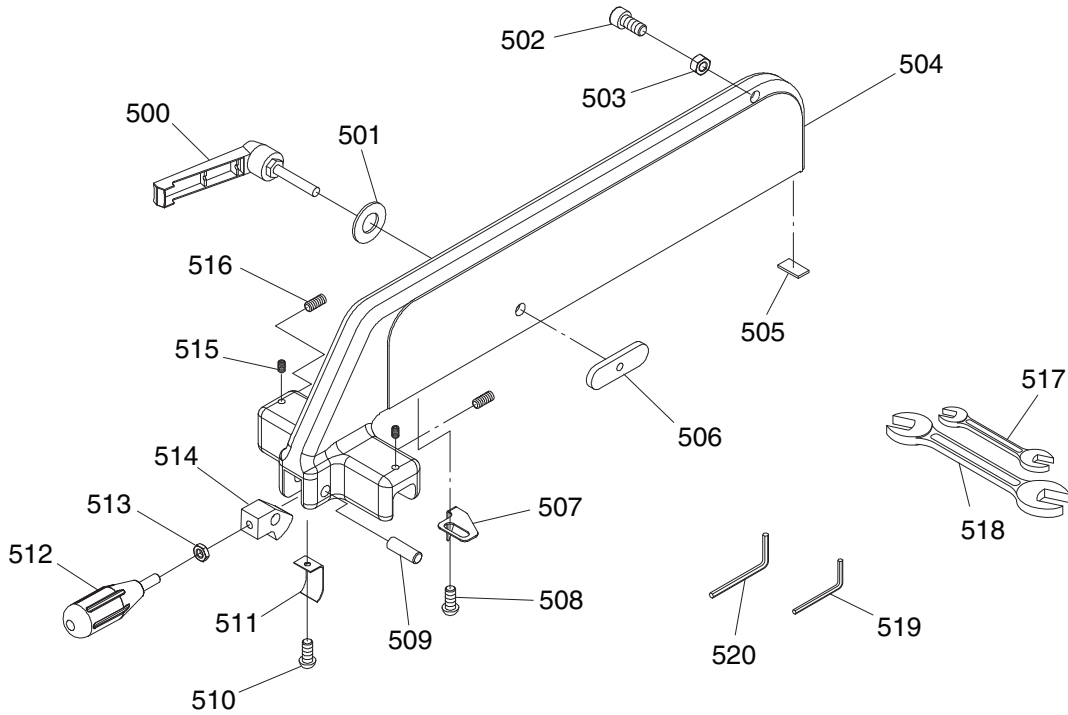


REF	PART #	DESCRIPTION
400	P0701400	FLAT HD SCR M4-.7 X 12
401	P0701401	RACK EXTENSION
402	P0701402	RACK
403	P0701403	FLANGE SCREW M6-1 X 16
404	P0701404	UPPER GUIDE POST
405V2	P0701405V2	GUIDE POST MOTOR 40W 12VDC V2.11.24
406	P0701406	FLAT HD SCR M5-.8 X 16
407	P0701407	MOTOR MOUNT
408	P0701408	WORM SHAFT
409	P0701409	ELEVATION GEAR HOUSING
410	P0701410	PINION GEAR
411	P0701411	SHOULDER BOLT
412	P0701412	GEAR HOUSING COVER
413	P0701413	LOCK WASHER 5MM
414	P0701414	CAP SCREW M5-.8 X 16
415	P0701415	PHLP HD SCR M4-.7 X 8

REF	PART #	DESCRIPTION
416	P0701416	BRACKET
417	P0701417	STEEL BALL
418	P0701418	COMPRESSION SPRING
419	P0701419	SET SCREW M10-1.5 X 10
420	P0701420	NYLON SET SCREW M7-1 X 10
421	P0701421	SET SCREW M4-.7 X 8
422	P0701422	LOCK COLLAR
423	P0701423	SET SCREW M4-.7 X 6
424	P0701424	HEX NUT M5-.8
425	P0701425	PHLP HD SCR M5-.8 X 55
426	P0701426	RUBBER SPACER 6MM
427	P0701427	FLAT WASHER 6MM
428	P0701428	GEAR BUSHING
429	P0701429	NYLON INSERT
430	P0701430	MOTOR BRUSH CAP
431	P0701431	MOTOR BRUSH



Fence Assembly & Tools

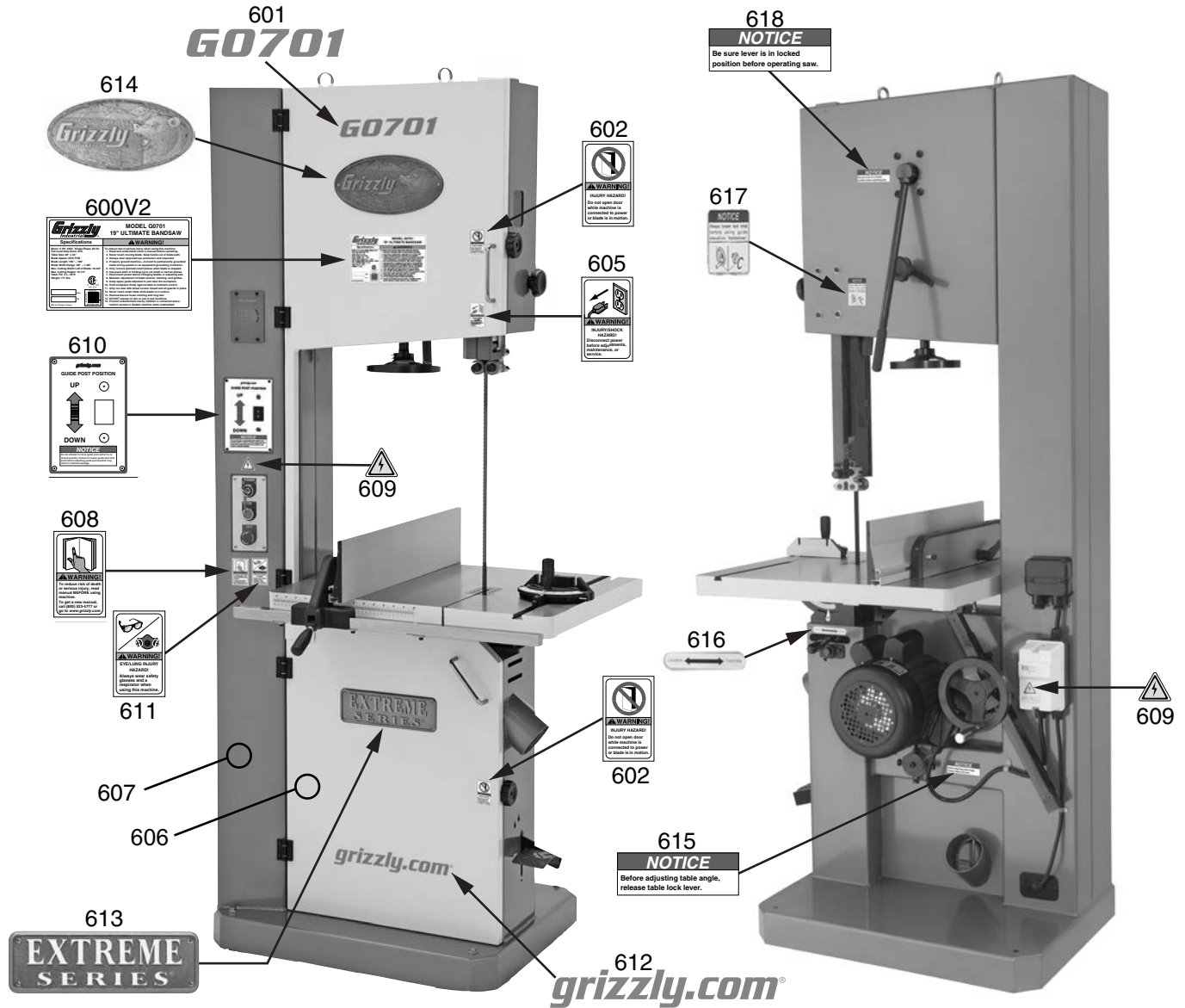


REF	PART #	DESCRIPTION
500	P0701500	LOCK LEVER M8-1.25 X 45
501	P0701501	FLAT WASHER 8MM
502	P0701502	CAP SCREW M8-1.25 X 20
503	P0701503	HEX NUT M8-1.25
504	P0701504	FENCE
505	P0701505	NYLON PAD
506	P0701506	RESAW FENCE T-BAR
507	P0701507	POINTER
508	P0701508	FLANGE SCREW M5-.8 X 8
509	P0701509	SHAFT
510	P0701510	FLANGE SCREW M4-.7 X 8

REF	PART #	DESCRIPTION
511	P0701511	SPRING PLATE
512	P0701512	FENCE HANDLE M8-1.25 X 20
513	P0701513	HEX NUT M8-1.25
514	P0701514	LOCKING CLAMP
515	P0701515	SET SCREW NYLON M6-1 X 10
516	P0701516	SET SCREW M8-1.25 X 12
517	P0701517	WRENCH 10/13MM
518	P0701518	WRENCH 17/19MM
519	P0701519	HEX WRENCH 5MM
520	P0701520	HEX WRENCH 6MM



Labels & Cosmetics



REF	PART #	DESCRIPTION
600V2	P0701600V2	MACHINE ID LABEL (CSA) V2.02.18
601	P0701601	MODEL NUMBER LABEL
602	P0701602	DOOR WARNING LABEL
605	P0701605	DISCONNECT POWER LABEL
606	P0701606	TOUCH-UP PAINT, GRIZZLY PUTTY
607	P0701607	TOUCH-UP PAINT, GRIZZLY GREEN
608	P0701608	READ MANUAL LABEL
609	P0701609	ELECTRICITY LABEL
610	P0701610	GUIDE POST ELEVATION LABEL

REF	PART #	DESCRIPTION
611	P0701611	GLASSES/RESPIRATOR LABEL
612	P0701612	GRIZZLY.COM LABEL
613	P0701613	EXTREME SERIES PLATE
614	P0701614	GRIZZLY NAMEPLATE
615	P0701615	TABLE LOCK NOTICE
616	P0701616	ANGLE LOCK LABEL
617	P0701617	GUIDE POST LOCK NOTICE
618	P0701618	WHEEL LOCK LEVER NOTICE

WARNING

Safety labels help reduce the risk of serious injury caused by machine hazards. If any label comes off or becomes unreadable, the owner of this machine **MUST** replace it in the original location before resuming operations. For replacements, contact (800) 523-4777 or www.grizzly.com.

