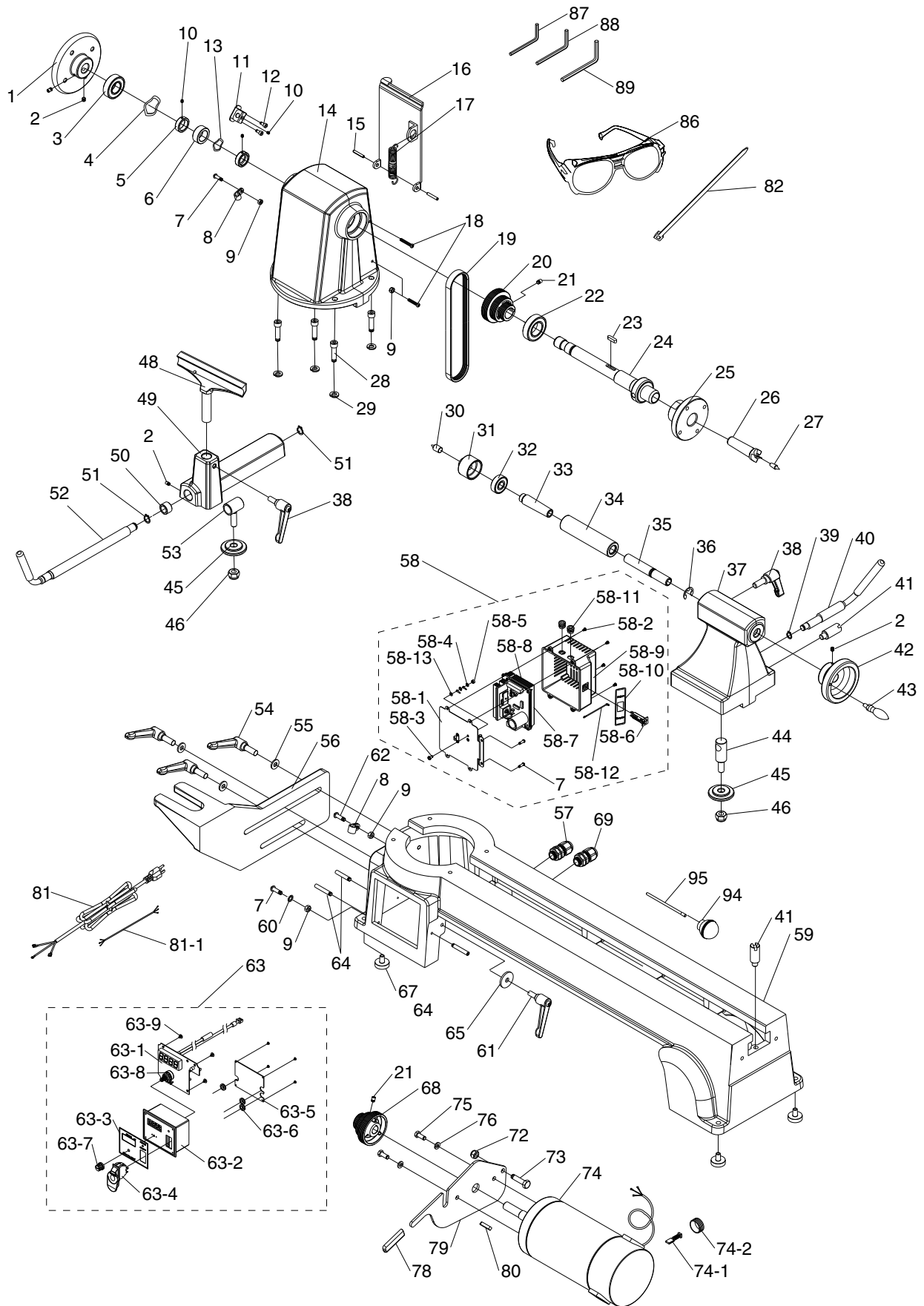


G0658 Main



G0658 Main Parts List

REF	PART #	DESCRIPTION
1	P0658001	SPINDLE HANDWHEEL
2	P0658002	SET SCREW 1/4-20 X 1/4
3	P0658003	BALL BEARING 6004-2RS
4	P0658004	WAVE WASHER 20MM
5	P0658005	COLLAR
6	P0658006	SENSOR RING
7	P0658007	PHLP HD SCR 10-24 X 5/8
8	P0658008	CORD CLAMP
9	P0658009	HEX NUT 10-24
10	P0658010	SET SCREW M4-.7 X 4
11	P0658011	SENSOR BRACKET
12	P0658012	CAP SCREW 5/32-32 X 3/8
13	P0658013	WAVE WASHER 20MM
14	P0658014	HEADSTOCK
15	P0658015	ROLL PIN 3 X 20
16	P0658016	REAR ACCESS COVER
17	P0658017	TENSION SPRING
18	P0658018	PHLP HD SCR 10-24 x 1-1/2
19	P0658019	RIBBED V-BELT 260J4
20	P0658020	SPINDLE PULLEY
21	P0658021	SET SCREW M6-1 X 8
22	P0658022	BALL BEARING 6005-2RS
23	P0658023	KEY 5 X 5 X 20
24	P0658024	SPINDLE
25	P0658025	FACEPLATE
26	P0658026	SPUR CENTER
27	P0658027	CENTER POINTER
28	P0658028	CAP SCREW 5/16-18 X 1
29	P0658029	LOCK WASHER 5/16
30	P0658030	LIVE CENTER POINT
31	P0658031	LIVE CENTER HEAD
32	P0658032	BALL BEARING 6002ZZ
33	P0658033	LIVE CENTER SHAFT
34	P0658034	TAILSTOCK QUILL
35	P0658035	LEADSCREW
36	P0658036	E-CLIP 12MM

REF	PART #	DESCRIPTION
37	P0658037	TAILSTOCK
38	P0658038	HANDLE ASSEMBLY
39	P0658039	EXT RETAINING RING 10MM
40	P0658040	TAILSTOCK LEVER
41	P0658041	END STOP
42	P0658042	HANDWHEEL
43	P0658043	HANDWHEEL KNOB
44	P0658044	TAILSTOCK CLAMP BOLT
45	P0658045	CLAMP PLATE
46	P0658046	LOCK NUT M10-1.5
48	P0658048	TOOL REST
49	P0658049	TOOL REST BODY
50	P0658050	BUSHING
51	P0658051	EXT RETAINING RING 12MM
52	P0658052	ECCENTRIC ROD
53	P0658053	CLAMP BOLT
54	P0658054	LARGE HANDLE ASSEMBLY
55	P0658055	FLAT WASHER 10MM
56	P0658056	OUTBOARD TURNING BRACKET
57	P0658057	STRAIN RELIEF MG20A-14B-ST
58	P0658058	CONTROL BOX
58-1	P0658058-1	DOOR PLATE
58-2	P0658058-2	PHLP HD SCR M4-.7 X 6
58-3	P0658058-3	PHLP HD SCR 10-24 X 3/8
58-4	P0658058-4	EXT TOOTH WASHER #10
58-5	P0658058-5	HEX NUT 10-24
58-6	P0658058-6	OVERLOAD SWITCH
58-7	P0658058-7	MOTOR CIRCUIT BOARD
58-8	P0658058-8	HEAT SINK
58-9	P0658058-9	CASE
58-10	P0658058-10	RESET LABEL
58-11	P0658058-11	SMALL STRAIN RELIEF
58-12	P0658058-12	JUMPER WIRE
58-13	P0658058-13	EXT TOOTH WASHER #10
59	P0658059	LATHE BED
60	P0658060	EXT TOOTH WASHER #10



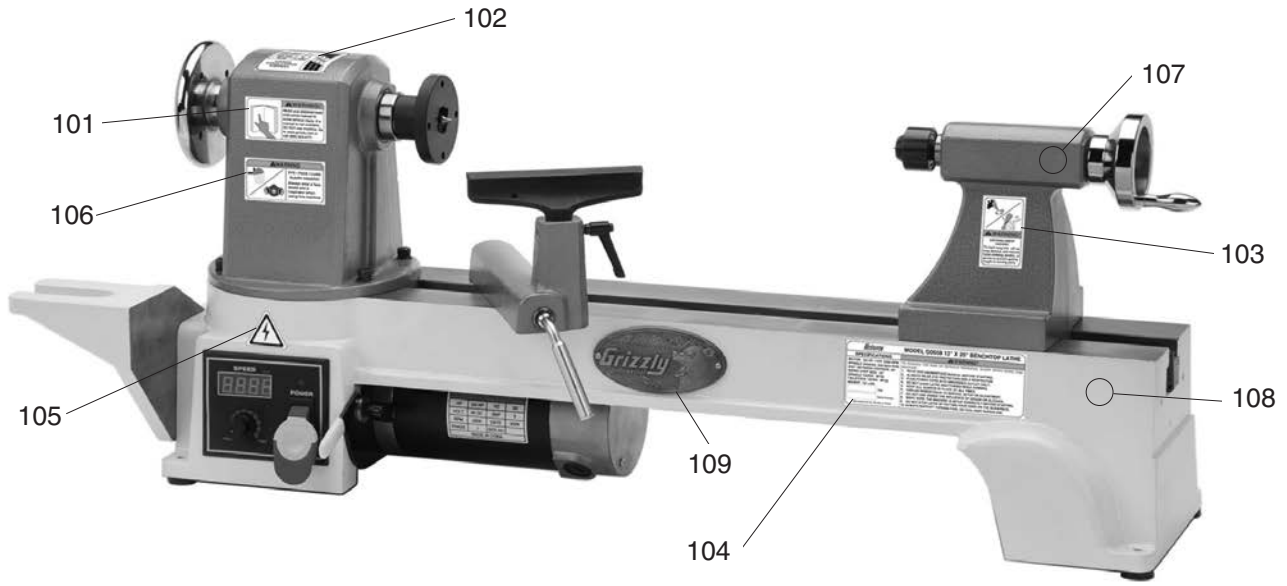
G0658 Main Parts List (cont'd)

REF	PART #	DESCRIPTION
61	P0658061	LEVER ASSEMBLY
62	P0658062	PHLP HD SCR 10-24 X 7/8
63	P0658063	ELECTRIC BOX
63-1	P0658063-1	CIRCUIT BOARD
63-2	P0658063-2	CONTROL BOX
63-3	P0658063-3	BOX COVER
63-4	P0658063-4	SWITCH
63-5	P0658063-5	BACK PLATE
63-6	P0658063-6	WIRE GROMMET
63-7	P0658063-7	KNOB
63-8	P0658063-8	SPEED CONTROL
63-9	P0658063-9	TAP SCREW 10-24 X 3/8
64	P0658064	SET SCREW M5-.8 X 15
65	P0658065	FLAT WASHER 8MM
67	P0658067	LEVELING FOOT
68	P0658068	MOTOR PULLEY
69	P0658069	STRAIN RELIEF MG16A-10B-ST
72	P0658072	LOCK NUT 5/16-18

REF	PART #	DESCRIPTION
73	P0658073	HEX BOLT 5/16-18 X 1-1/4
74	P0658074	MOTOR 3/4 HP 110V DC
74-1	P0658074-1	MOTOR BRUSH
74-2	P0658074-2	MOTOR BRUSH CAP
75	P0658075	HEX BOLT M6-1 X 16
76	P0658076	LOCK WASHER 6MM
78	P0658078	RUBBER HANDLE
79	P0658079	MOTOR PLATE
80	P0658080	KEY 4 X 4 X 20
81	P0658081	POWER CORD
81-1	P0658081-1	WIRING HARNESS
82	P0658082	ZIP TIE
86	P0658086	SAFETY GLASSES
87	P0658087	HEX WRENCH 2.5MM
88	P0658088	HEX WRENCH 3MM
89	P0658089	HEX WRENCH 6MM
94	P0658094	KNOCKOUT BAR HANDLE
95	P0658095	KNOCKOUT BAR ROD



G0658 Labels



REF	PART #	DESCRIPTION
101	P0658101	READ MANUAL LABEL
102	P0658102	SPINDLE SPEED LABEL
103	P0658103	ENTANGLEMENT HAZARD
104	P0658104	MACHINE ID LABEL
105	P0658105	ELECTRICITY LABEL

REF	PART #	DESCRIPTION
106	P0658106	EYE/FACE/LUNG LABEL
107	P0658107	GRIZZLY GREEN TOUCH UP PAINT
108	P0658108	GRIZZLY PUTTY TOUCH UP PAINT
109	P0658109	GRIZZLY NAMEPLATE- SMALL

WARNING

Safety labels warn about machine hazards and ways to prevent injury. The owner of this machine **MUST** maintain the original location and readability of the labels on the machine. If any label is removed or becomes unreadable, **REPLACE** that label before using the machine again. Contact Grizzly at (800) 523-4777 or www.grizzly.com to order new labels.

