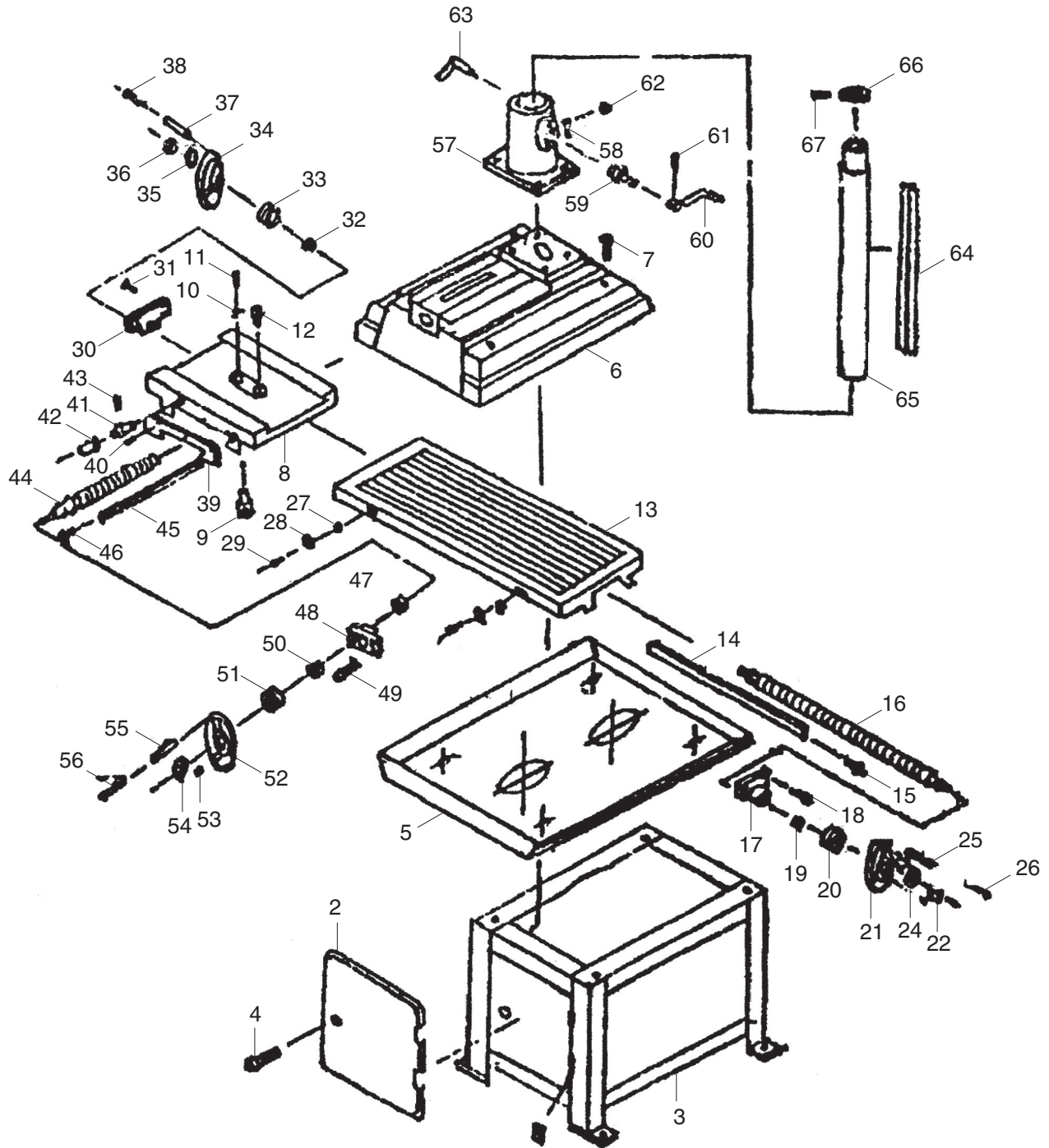


Stand/Base Parts Breakdown



Stand/Base Parts List

REF	PART #	DESCRIPTION
1	P0517001	BASE
2	P0517002	DOOR
3	P0517003	HINGE
4	P0517004	KNURLED THUMB SCREW M6-1 X 20
5	P0517005	OIL PLATE
6	P0517006	BASE
7	P0517007	CAP SCREW M12-1.75 X 150
8	P0517008	SADDLE
9	P0517009	NUT TR20 X 4-9H
10	PW01M	FLAT WASHER 8MM
11	PS16M	PHLP HD SCR M8-1.25 x 16
12	P0517012	NUT TR20 X 4-9H
13	P0517013	TABLE
14	P0517014	LONG BEVEL IRON
15	P0517015	ADJUST SCREW M8-69
16	P0517016	LONGITUDINAL LEAD SCREW
17	P0517017	SUPPORT
18	PSB01M	CAP SCREW M6-1 X 16
19	P51102	THRUST BEARING 51102
20	P0517020	SCALE RING
21	P0517021	HANDWHEEL
22	PK54M	KEY 3 X 3 X 19
23	PLW05M	LOCK WASHER 12MM
24	PN43M	ACORN NUT M12-1.75
25	P0517055	HANDLE COLLAR
26	P0517056	HANDLE
27	P0517027	SCREW BRACKET
28	P0517028	DOG
29	PSB27M	CAP SCREW M6-1 X 14
30	P0517030	SUPPORT
31	PSB01M	CAP SCREW M6-1 X 16
32	P51102	THRUST BEARING 51102
33	P0517033	SCALE RING
34	P0517034	HANDWHEEL

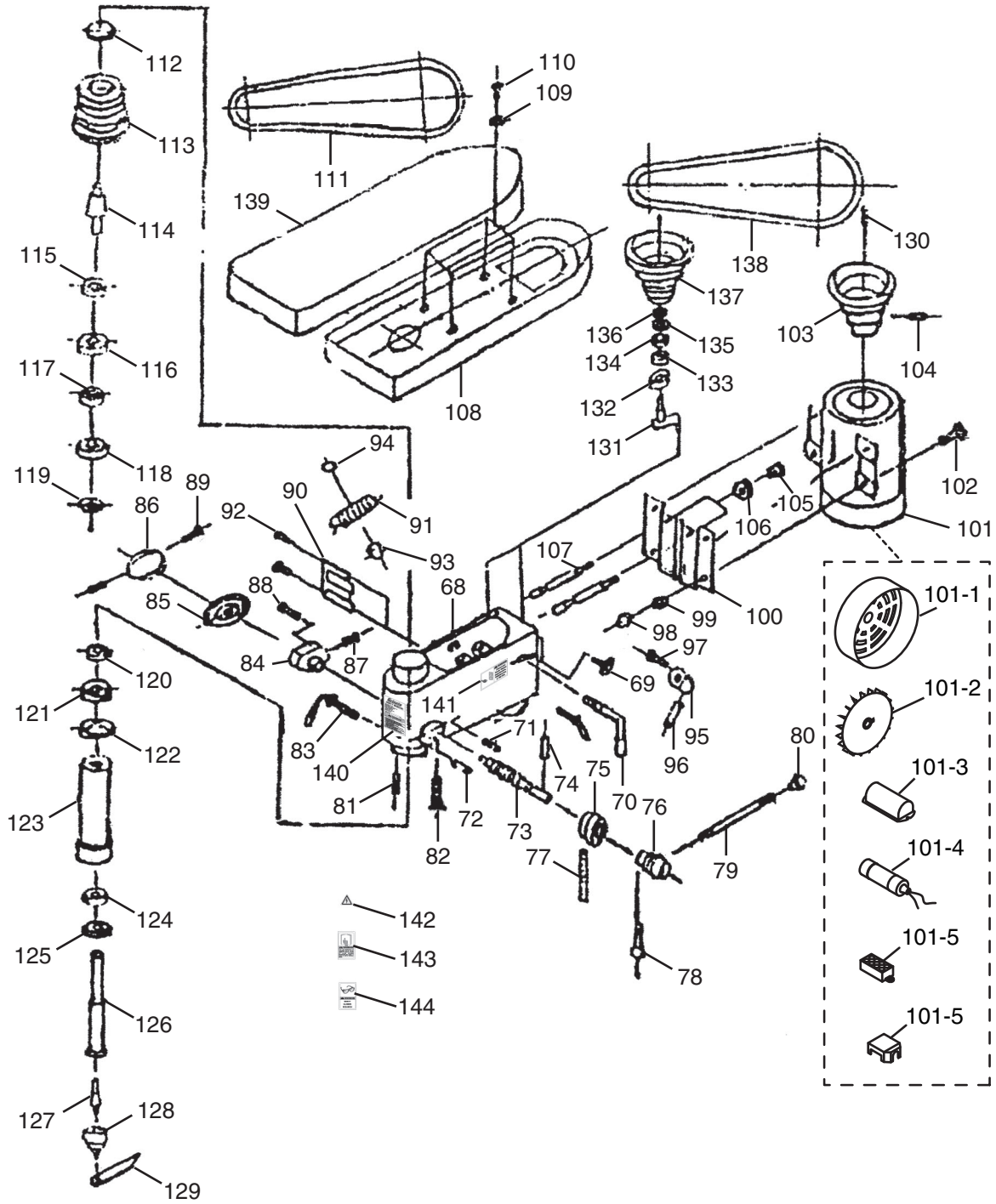
REF	PART #	DESCRIPTION
35	PW06M	FLAT WASHER 12MM
36	PN43M	ACORN NUT M12-1.75
37	P0517055	HANDLE COLLAR
38	P0517056	HANDLE
39	P0517039	COVER
40	PB02M	HEX BOLT M6-1 X 12
41	P0517041	THUMB SCREW M10-1.5 X 30
42	P0517042	THUMB HANDLE
43	P0517043	PIN
44	P0517044	CROSSFEED LEAD SCREW
45	P0517045	SHORT BEVEL IRON
46	P0517046	ADJUST SCREW M8-69
47	P51102	THRUST BEARING 51102
48	P0517048	SUPPORT
49	PSB01M	CAP SCREW M6-1 X 16
50	P51102	THRUST BEARING 51102
51	P0517051	SCALE RING
52	P0517052	HANDWHEEL
53	PK54M	KEY 3 X 3 X 19
54	PN43M	ACORN NUT M12-1.75
55	P0517055	HANDLE COLLAR
56	P0517056	HANDLE
57	P0517057	SUPPORT (REST)
58	PB24M	HEX BOLT M12-1.75 X 45
59	P0517059	WORM GEAR
60	P0517060	HANDLE
61	P0517061	PIN
62	P0517062	GEAR
63	P0517063	CLAMP HANDLE
64	P0517064	RACK
65	P0517065	COLUMN
66	P0517066	DUST COVER
67	PSS14M	SET SCREW M8-1.25 X 12

WARNING

Safety labels warn about machine hazards and ways to prevent injury. The owner of this machine **MUST** maintain the original location and readability of the labels on the machine. If any label is removed or becomes unreadable, **REPLACE** that label before using the machine again. Contact Grizzly at (800) 523-4777 or www.grizzly.com to order new labels.



Headstock Parts Breakdown



Headstock Parts List

REF	PART #	DESCRIPTION
68	P0517068	BODY
69	P0517069	KNOB M8-1.25 X 25
70	P0517070	SHIFTER BAR
71	P0517071	PIN
72	P0517072	PIN
73	P0517073	FEED SHAFT
74	P0517074	PIN
75	P0517075	SCALE RING
76	P0517076	HANDLE BODY
77	P0517077	SCALE
78	P0517078	KNOB M8-1.25 X 16
79	P0517079	HANDLE BAR
80	P0517080	BALL KNOB M12-1.75
81	P0517081	SPECIAL SET SCREW M6-1 X 20
82	P0517082	FLAT HD DOG PT SCREW M6-1 X 22
83	P0517083	CLAMP HANDLE
84	P0517084	SPRING HANDLE
85	P0517085	SPRING PLATE
86	P0517086	SPRING CAP
87	PSB02M	CAP SCREW M6-1 X 20
88	PSB01M	CAP SCREW M6-1 X 16
89	PS17M	PHLP HD SCR M4-.7 x 6
90	P0517090	SWITCH
91	P0517091	WIRE
92	PS38M	PHLP HD SCR M4-.7 X 10
93	P0517093	RUBBER BUSHING
94	P0517094	WIRE CLIP
95	P0517095	SHIFT
96	P0517096	PIN
97	PSB47M	CAP SCREW M10-1.5 X 40
98	PN03M	HEX NUT M8-1.25
99	PW01M	FLAT WASHER 8MM
100	P0517100	MOTOR BASE
101	P0517101	MOTOR
101-1	P0517101-1	FAN COVER
101-2	P0517101-2	MOTOR FAN
101-3	P0517101-3	CAPACITOR COVER
101-4	P0517101-4	CAPACITOR 300MFD 125VAC
101-5	P0517101-5	TERMINAL BLOCK
101-6	P0517101-6	TERMINAL BLOCK COVER
102	PB07M	HEX BOLT M8-1.25 X 25
103	P0517103	MOTOR PULLEY

REF	PART #	DESCRIPTION
104	PSS23M	SET SCREW M4-.7 X 10
105	PN09M	HEX NUT M12-1.75
106	PN09M	HEX NUT M12-1.75
107	P0517107	SLIDE BAR
108	P0517139	PULLEY COVER
109	PW03M	FLAT WASHER 6MM
110	PSB26M	CAP SCREW M6-1 X 12
111	P0517111	V-BELT A-27 4L270
112	P0517112	SPANNER NUT
113	P0517113	SPINDLE PULLEY
114	P0517114	SPRING SLEEVE
115	PR24M	INT RETAINING RING 42MM
116	P6204	BALL BEARING 6204
117	P0517117	COLLAR
118	P6204	BALL BEARING 6204
119	PR25M	INT RETAINING RING 47MM
120	P0517120	SPANNER NUT
121	P0517121	BEARING WASHER 17MM
122	P6203	BALL BEARING 6203
123	P0517123	SLEEVE
124	P6205	BALL BEARING 6205
125	P0517125	DUST COVER
126	P0517126	SPINDLE
127	P0517127	SPINDLE BAR
128	P0517128	DRILL CHUCK 1-16MM B-16
129	P0517129	WEDGE SHIFTER
130	PK54M	KEY 3 X 3 X 19
131	P0517131	CENTER PULLEY SHAFT
132	P6201	BALL BEARING 6201
133	P0517133	COLLAR
134	P6201	BALL BEARING 6201
135	PR29M	INT RETAINING RING 32MM
136	PR03M	EXT RETAINING RING 12MM
137	P0517137	CENTER PULLEY
138	PVA31	V-BELT A-31 4L310
139	P0517139	PULLEY COVER
140	P0517140	MACHINE ID LABEL
141	P0517141	UNPLUG POWER LABEL
142	PLABEL-14	ELECTRICITY LABEL
143	PLABEL-12A	READ MANUAL LABEL
144	PLABEL-11	SAFETY GLASSES LABEL

WARNING

Safety labels warn about machine hazards and ways to prevent injury. The owner of this machine **MUST** maintain the original location and readability of the labels on the machine. If any label is removed or becomes unreadable, **REPLACE** that label before using the machine again. Contact Grizzly at (800) 523-4777 or www.grizzly.com to order new labels.

