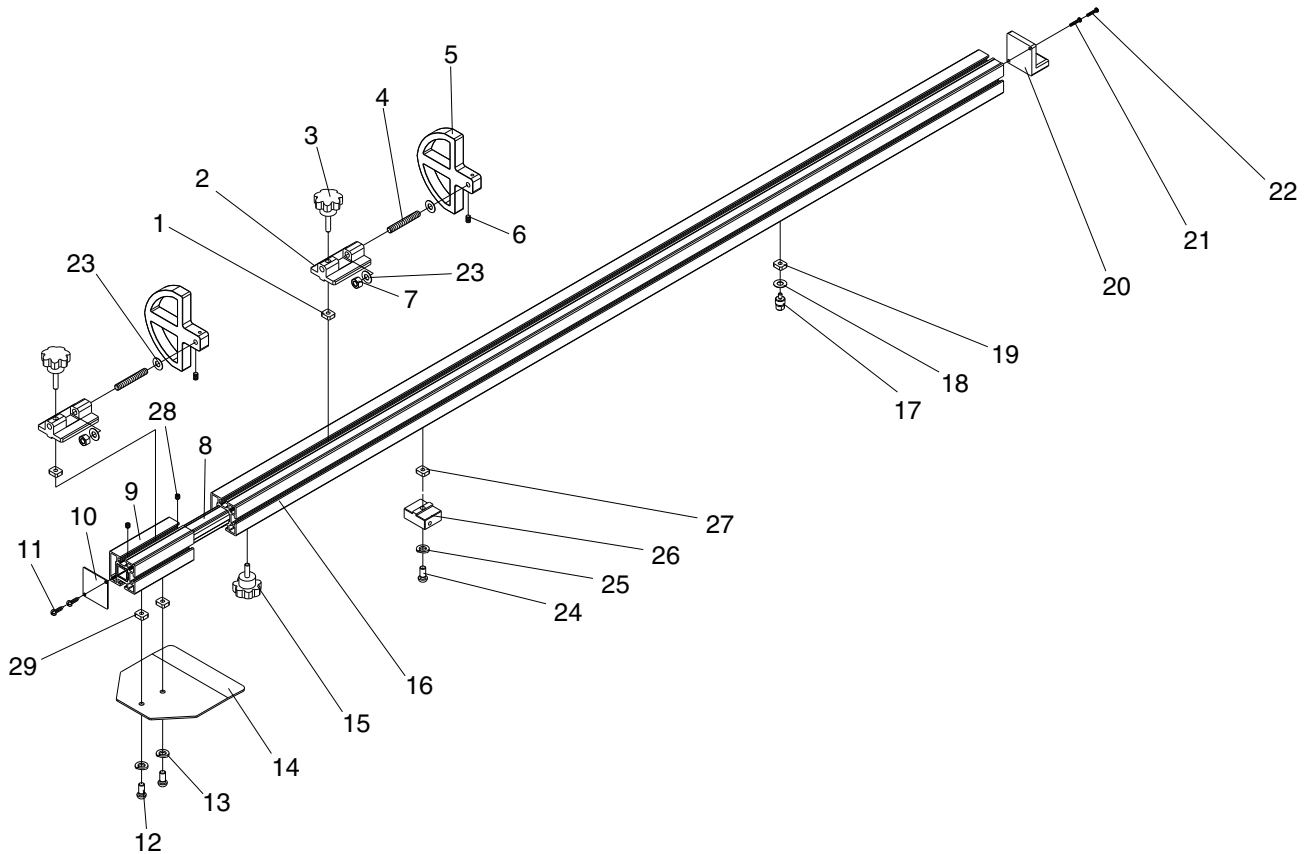


SECTION 10: PARTS

Crosscut Fence

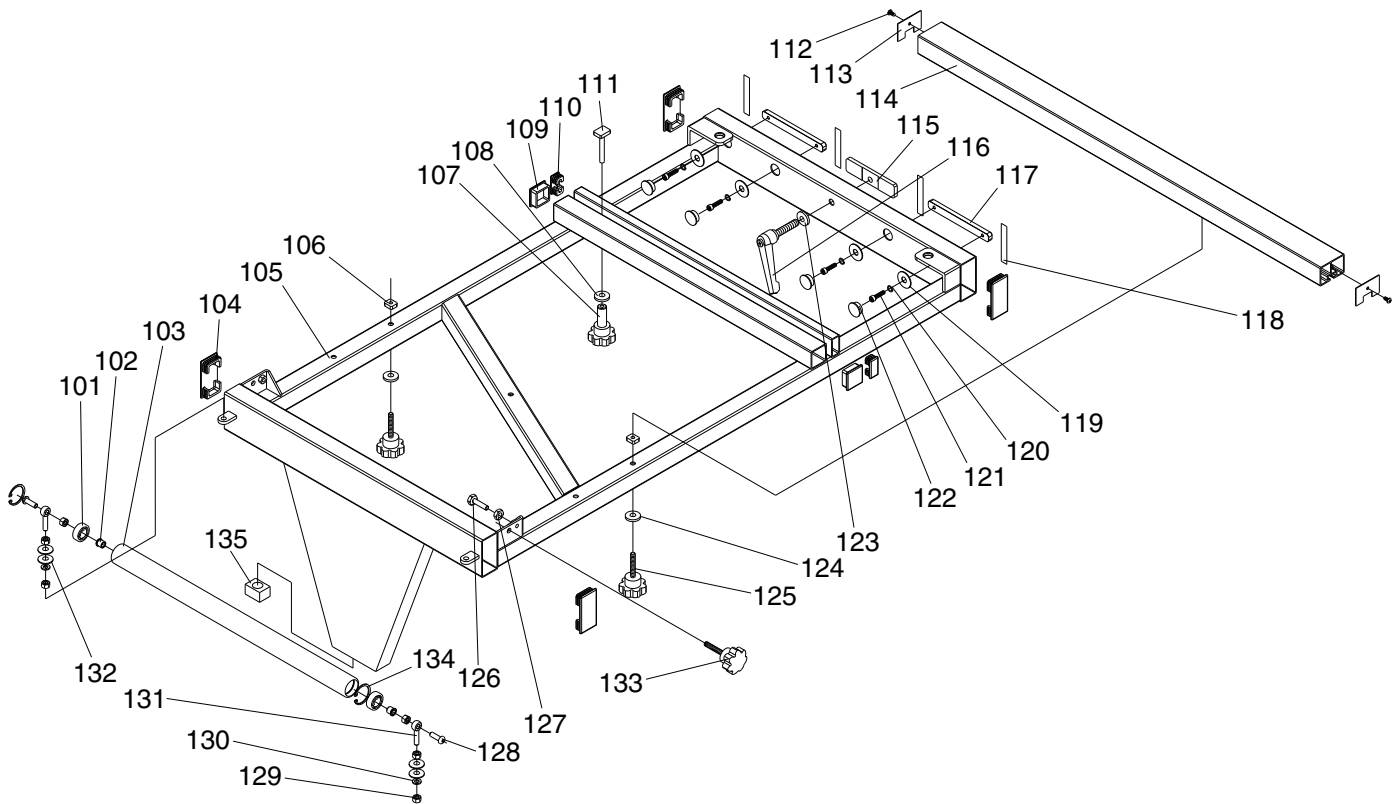


REF	PART #	DESCRIPTION
1	P04930001	T-NUT M8-1.25
2	P04930002	STOP BRACKET
3	P04930003	KNOB M8-1.25 X 40
4	P04930004	STUD M10-1.5 X 70
5	P04930005	FLIP STOP
6	PSS01M	SET SCREW M6-1 X 10
7	PLN05M	LOCK NUT M10-1.5
8	P04930008	SQUARE TUBE
9	P04930009	EXT FENCE
10	P04930010	COVER
11	PHTEK7	TAP SCREW #8 X 3/8
12	PSBS03M	BUTTON HD CAP SCR M8-1.25 X 16
13	PLW04M	LOCK WASHER 8MM
14	P04930014	LOCATE PLATE
15	P04930015	KNOB SCREW M8-1.25 X 25

REF	PART #	DESCRIPTION
16	P04930016	SQUARE FENCE
17	P04930017	ROTATE SHAFT
18	P04930018	FIBER WASHER 10MM
19	P04930001	T-NUT M8-1.25
20	P04930020	ROTATE BLOCK
21	PS38M	PHLP HD SCR M4-.7 X 10
22	PS25M	PHLP HD SCR M4-.7 X 35
23	P04930023	FIBER WASHER 10MM
24	PSB40M	CAP SCREW M8-1.25 X 35
25	PLW04M	LOCK WASHER 8MM
26	P04930026	BLOCK
27	P04930001	T-NUT M8-1.25
28	PSS02M	SET SCREW M6-1 X 6
29	P04930001	T-NUT M8-1.25



Crosscut Table

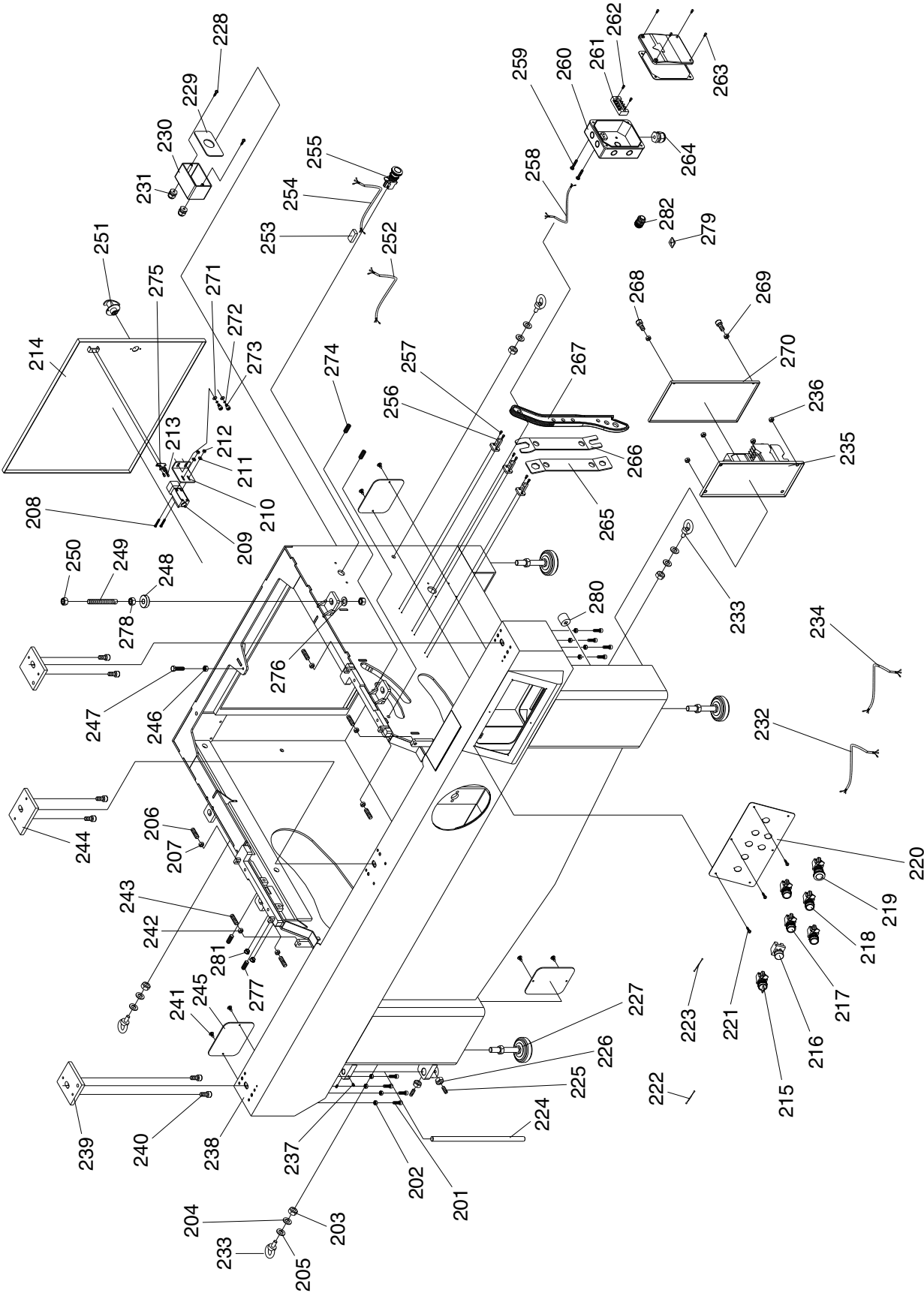


REF	PART #	DESCRIPTION
101	P6201	BALL BEARING 6201ZZ
102	P04930102	OIL BEARING 12 X 12MM
103	P04930103	ROLLER
104	P04930104	PLUG 80 X 40MM
105	P04930105	SUPPORT FRAME
106	P04930001	T-NUT M8-1.25
107	P04930107	KNOB SCREW M8-1.25 X 25
108	PW01M	FLAT WASHER 8MM
109	P04930109	PLUG 38 X 38MM
110	P04930110	PLUG 40 X 20MM
111	P04930111	T-BOLT M8-1.25 X 60
112	PHTEK7	TAP SCREW #8 X 3/8
113	P04930113	COVER
114	P04930114	SQUARE BRACE
115	P04930115	T-BLOCK
116	P04930116	ADJUST HANDLE M12-1.75 X 55
117	P04930117	PLATE
118	P04930118	PAD

REF	PART #	DESCRIPTION
119	PW03M	FLAT WASHER 6MM
120	PLW03M	LOCK WASHER 6MM
121	PSB115M	BUTTON HD CAP SCR M6-1 X 16
122	P04930122	PLUG
123	PW06M	FLAT WASHER 12MM
124	PW01M	FLAT WASHER 8MM
125	P04930125	KNOB SCREW M8-1.25 X 50
126	PB26M	HEX BOLT M8-1.25 X 30
127	PN03M	HEX NUT M8-1.25
128	PSBS23M	BUTTON HD CAP SCR M8-1.25 X 25
129	PN03M	HEX NUT M8-1.25
130	PLW04M	LOCK WASHER 8MM
131	P04930131	EYE BOLT M8-1.25 X 40
132	PW01M	FLAT WASHER 8MM
133	P04930133	KNOB SCREW M8-1.25 X 50
134	PR29M	INT RETAINING RING 32MM
135	P04930135	PLUG



Cabinet Body



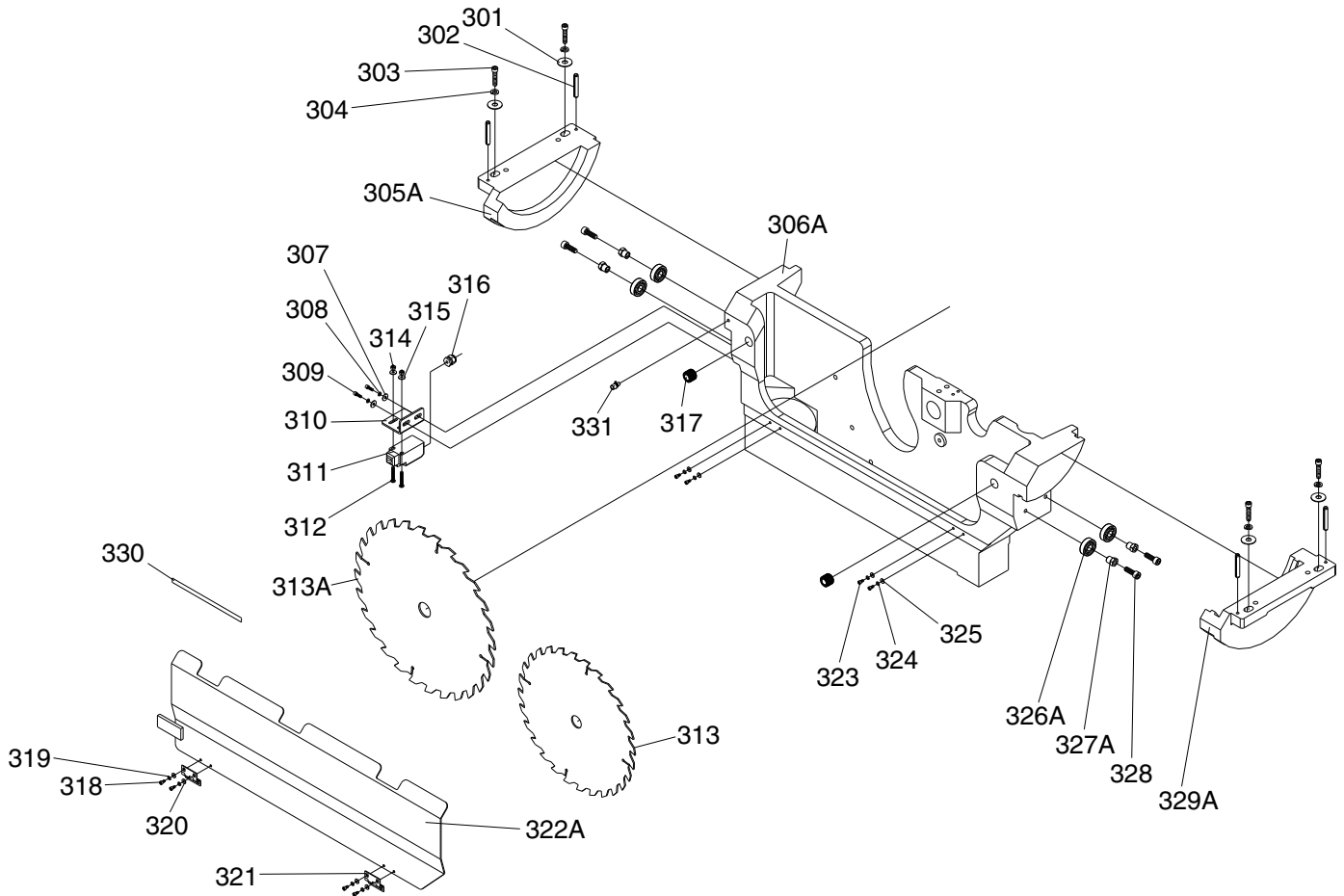
Cabinet Body Parts

REF	PART #	DESCRIPTION
201	PSB07M	CAP SCREW M6-1 X 30
202	PN01M	HEX NUT M6-1
203	PN09M	HEX NUT M12-1.75
204	PW06M	FLAT WASHER 12MM
205	P04930205	PLASTIC WASHER 13MM
206	PSS84M	SET SCREW M10-1.5 X 35
207	PN02M	HEX NUT M10-1.5
208	PS25M	PHLP HD SCR M4-.7 X 35
209	P04930209	DOOR SAFETY SWITCH ADZ-S11
210	P04930210	FIXED PLATE
211	PW05M	FLAT WASHER 4MM
212	PN04M	HEX NUT M4-.7
213	PS02M	PHLP HD SCR M4-.7 X 12
214	P04930214	PLATE
215	P04930215	KEY SWITCH
216	P04930216	POWER LAMP YK.24V
217	P04930217	SWITCH BUTTON-ON
218	P04930218	SWITCH BUTTON-OFF
219	P04930219	EMERGENCY STOP BUTTON E2R1R(1B)
220	P04930220	CONTROL PANEL FACE
221	PS17M	PHLP HD SCR M4-.7 X 6
222	P04930222	CORD 1C
223	P04930223	CORD 1C
224	P04930224	SHAFT
225	PSS10M	SET SCREW M10-1.5 X 20
226	PN02M	HEX NUT M10-1.5
227	P04930227	FOOT M16-2 X 100
228	PHTEK17M	TAP SCREW M5 X 20
229	P04930229	PAD
230	P04930230	SWITCH BOX
231	P04930231	STRAIN RELIEF PG11
232	P04930232	CORD 6C
233	P04930233	EYE BOLT 12MM
234	P04930234	CORD-STOP 2C
235	P04930235	ELECTRIC.PANEL 220/440V 3PH
236	PFN02M	FLANGE NUT M6-1
237	PSS04M	SET SCREW M6-1 X 12
238	P04930238	MACHINE BODY
239	P04930239	LOCATE BLOCK
240	PSB11M	CAP SCREW M8-1.25 X 16
241	PFS04M	FLANGE SCREW M4-.7 X 6

REF	PART #	DESCRIPTION
242	PN02M	HEX NUT M10-1.5
243	PSS84M	SET SCREW M10-1.5 X 35
244	P04930244	LOCATE BLOCK
245	P04930245	PLATE
246	PN03M	HEX NUT M8-1.25
247	PB26M	HEX BOLT M8-1.25 X 30
248	P04930248	SPACER RING 14MM
249	P04930249	STUD M14-2 X 110
250	PN32M	HEX NUT M14-2
251	P04930251	DOOR KNOB
252	P04930252	CORD-STOP 2C
253	P04930253	WIRE CONNECTOR 224-201
254	P04930254	CORD-STOP 2C
255	P04930255	EMERGENCY STOP BUTTON E2R1R(1B)
256	P04930256	HANGER
257	PFS18M	FLANGE SCREW M4-.7 X 16
258	P04930258	POWER CORD
259	PSBS05M	BUTTON HD CAP SCR M6-1 X 20
260	P04930260	POWER BOX
261	P04930261	TERMINAL 4P
262	PS05M	PHLP HD SCR M5-.8 X 8
263	PSBS06M	BUTTON HD CAP SCR M5-.8 X 12
264	P04930264	STRAIN RELIEF 20MM
265	P04930265	ARBOR WRENCH 24,19MM CLOSED
266	P04930266	ARBOR WRENCH 24,19MM OPEN
267	P04930267	PUSH STICK
268	PSB02M	CAP SCREW M6-1 X 20
269	PLN03M	LOCK NUT M6-1
270	P04930270	PLATE
271	PW03M	FLAT WASHER 6MM
272	PLW03M	LOCK WASHER 6MM
273	PSB04M	CAP SCREW M6-1 X 10
274	PSS94M	SET SCREW M10-1.5 X 25
275	PLW02M	LOCK WASHER 4MM
276	PW10M	FLAT WASHER 14MM
277	PSS95M	SET SCREW M10-1.5 X 40
278	P04930278	LOCK NUT M14-2
279	P04930279	BLOCK
280	P04930280	COTTON PAD
281	P04930281	HOLE PLUGS
282	P04930282	STRAIN RELIEF



Main Blade Trunnion

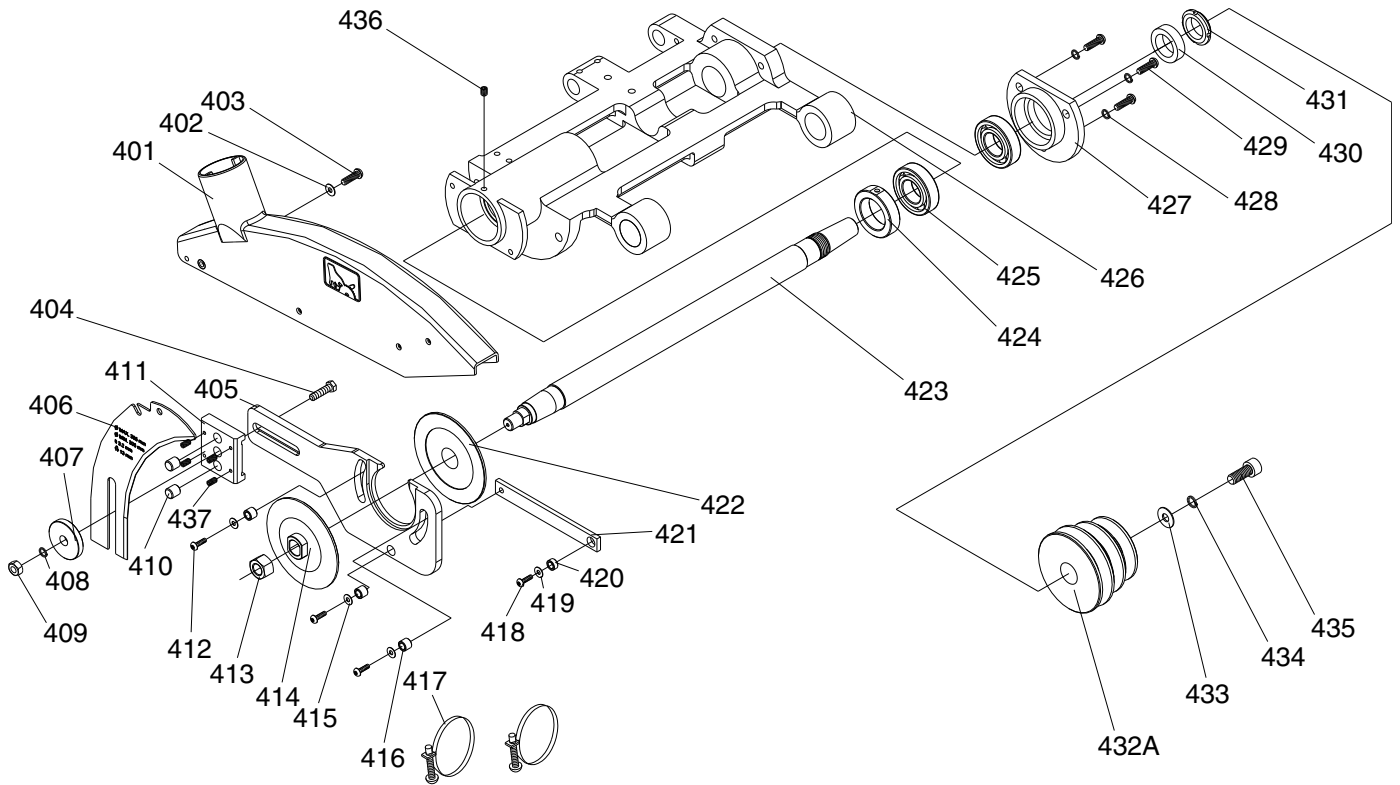


REF	PART #	DESCRIPTION
301	P04930301	FLAT WASHER 10MM
302	P04930302	ROLL PIN 6 X 45
303	P04930303	CAP SCREW M10-1.5 X 45
304	P04930304	LOCK WASHER 10MM
305	P04930305	TRUNNION BRACKET LEFT
305A	P04930305A	LEFT TRUNNION BRACKET V2.08.07
306	P04930306	CHANNEL BASE
306A	P04930306A	CHANNEL BASE V2.08.07
307	P04930307	FLAT WASHER 6MM
308	P04930308	LOCK WASHER 6MM
309	P04930309	CAP SCREW M6-1 X 10
310	P04930310	FIX PLATE
311	P04930311	DOOR SAFETY SWITCH
312	P04930312	PHLP HD SCR M4-.7 X 35
313	P04930313	SAW BLADE 12" X 1" X 100T
313A	P04930313A	SAW BLADE 14" X 1" X 100T
314	P04930314	HEX NUT M4-.7
315	P04930315	FLAT WASHER 4MM
316	P04930316	STRAIN RELIEF PG11
317	P04930317	MAGNETIC IRON ASSY

REF	PART #	DESCRIPTION
317-1	P04930317-1	MAGNETIC IRON
317-2	P04930317-2	BRACKET
317-3	P04930317-3	HEX BOLT M20-1.5 X 15
318	P04930318	CAP SCREW M5-.8 X 6
319	P04930319	LOCK WASHER 5MM
320	P04930320	FLAT WASHER 5MM
321	P04930321	HINGE
322	P04930322	COVER
322A	P04930322A	COVER V2.08.07
323	P04930323	CAP SCREW M5-.8 X 12
324	P04930324	LOCK WASHER 5MM
325	P04930325	FLAT WASHER 5MM
326	P04930326	BALL BEARING 6201ZZ
327	P04930327	ECCENTRIC SHAFT
327A	P04930327A	ECCENTRIC SHAFT V2.08.07
328	P04930328	CAP SCREW M8-1.25 X 30
329	P04930329	TRUNNION BRACKET RIGHT
329A	P04930329A	RIGHT TRUNNION BRACKET V2.08.07
330	P04930330	SPONGE
331	P04930331	OIL INLET M6-1



Main Blade Arbor

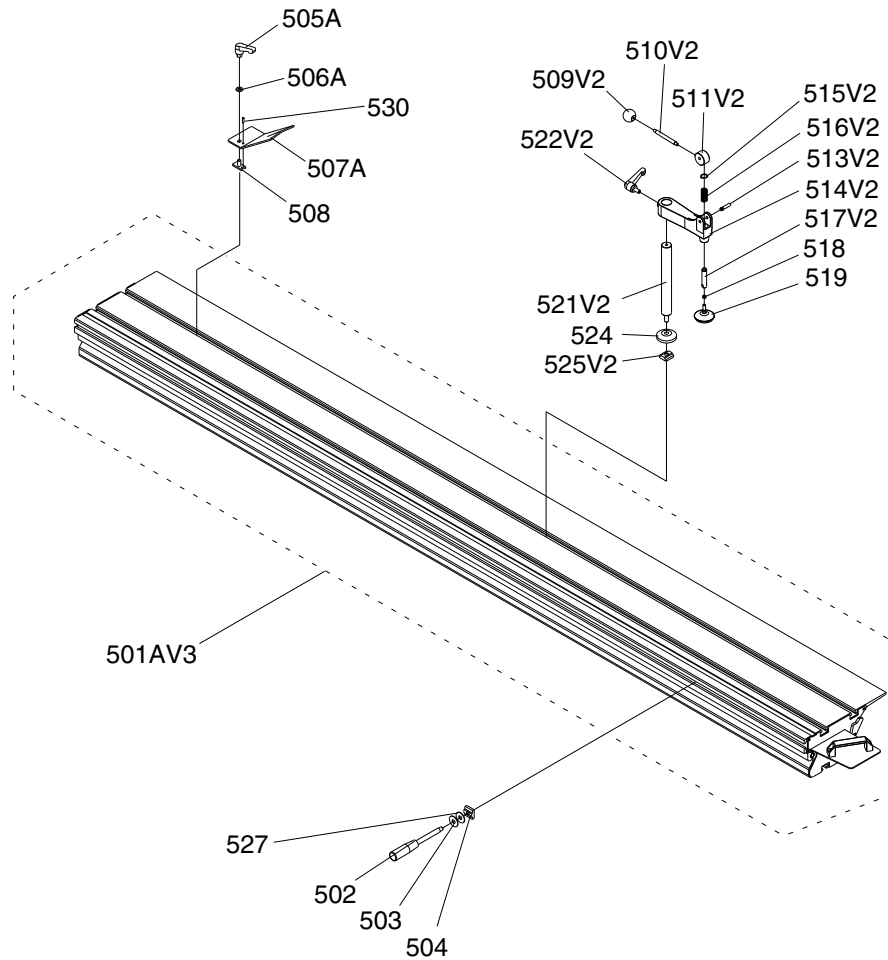


REF	PART #	DESCRIPTION
401	P04930401	BLADE COVER
402	PW01M	FLAT WASHER 8MM
403	PSBS07M	BUTTON HD CAP SCR M8-1.25 X 40
404	PB35M	HEX BOLT M12-1.75 X 40
405	P04930405	LOCATE PLATE
406	P04930406	RIVING KNIFE
407	P04930407	LOCK PLATE
408	PLW05M	LOCK WASHER 12MM
409	PN09M	HEX NUT M12-1.75
410	P04930410	STUD
411	P04930411	FIX BLOCK
412	PSBS22M	BUTTON HD CAP SCR M8-1.25 X 20
413	P04930413	HEX NUT M16-2 (LH)
414	P04930414	ARBOR FLANGE
415	P04930415	FENDER WASHER 8MM
416	P04930416	BUSHING
417	P04930417	HOSE CLAMP 2-1/2"
418	PSBS23M	BUTTON HD CAP SCR M8-1.25 X 25
419	PW01M	FLAT WASHER 8MM

REF	PART #	DESCRIPTION
420	P04930420	BUSHING
421	P04930421	LINK PLATE
422	P04930422	ARBOR FLANGE
423	P04930423	MAIN ARBOR 25.4MM
424	P04930424	COLLAR
425	P04930425	BEARING 6206LLU
426	P04930426	MAIN HOUSING
427	P04930427	BEARING HOUSING
428	PLW06M	LOCK WASHER 10MM
429	PSBS08M	BUTTON HD CAP SCR M10-1.5 X 35
430	P04930430	COLLAR
431	P04930431	HEX NUT M30-1.5
432A	P04930432A	ARBOR PULLEY V2.08.07
433	PW04M	FLAT WASHER 10MM
434	PLW06M	LOCK WASHER 10MM
435	PSB64M	CAP SCREW M10-1.5 X 25
436	PSS03M	SET SCREW M6-1 X 8
437	PSS05M	SET SCREW M5-.8 X 10



Table Accessories

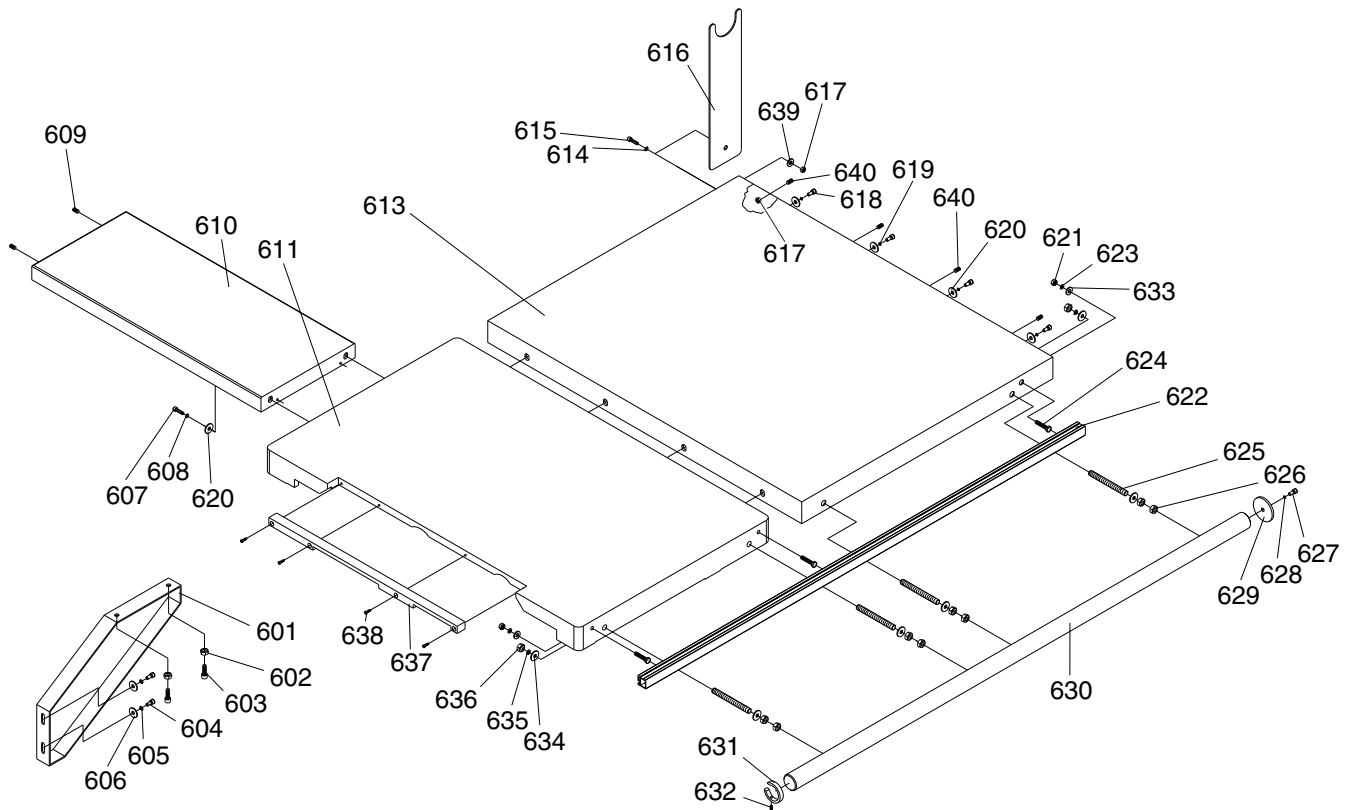


REF	PART #	DESCRIPTION
501AV3	P04930501AV3	SLIDING TABLE SET 3200MM V3.07.10
502	P04930502	HANDLE
503	PW04M	FLAT WASHER 10MM
504	P04930504	T-NUT M12-1.75
505A	P04930505A	KNOB SCREW M10-1.5 X 20 V2.10.07
506A	PW04M	FLAT WASHER 10MM
507A	P04930507A	EDGE SHOE PLATE V2.10.07
508	P04930504	T-NUT M12-1.75
509V2	P04930509V2	BALL KNOB M8-1.25 V2.07.10
510V2	P04930510V2	HANDLE BAR V2.07.10
511V2	P04930511V2	CAM V2.07.10

REF	PART #	DESCRIPTION
513V2	P04930513V2	CAM PIN V2.07.10
514V2	P04930514V2	HOLD DOWN BLOCK V2.07.10
515V2	PR02M	EXT RETAINING RING 14MM
516V2	P04930516V2	SPRING V2.07.10
517V2	P04930517V2	SHAFT V2.07.10
518	PN02	HEX NUT 5/16-18
519	P04930519	HOLD DOWN PAD
521V2	P04930521V2	SHAFT V2.07.10
522V2	P04930522V2	ADJUSTABLE HANDLE V2.07.10
524	P04930524	DISC
525V2	P04930525V2	T-NUT M12-1.75 V2.07.10



Tables

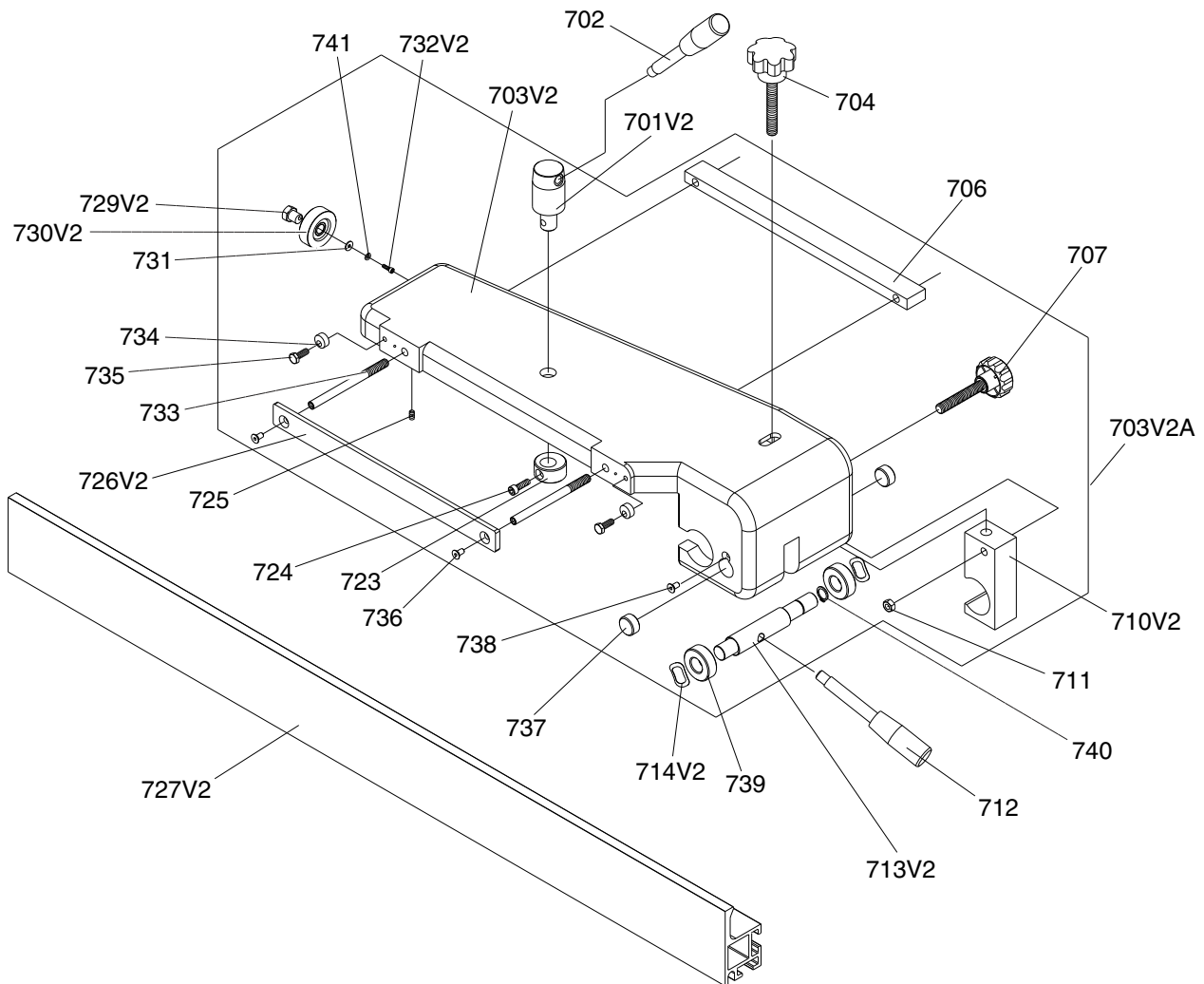


REF	PART #	DESCRIPTION
601	P04930601	SUPPORT BRACE
602	PN03M	HEX NUT M8-1.25
603	PSB14M	CAP SCREW M8-1.25 X 20
604	PSB14M	CAP SCREW M8-1.25 X 20
605	PLW04M	LOCK WASHER 8MM
606	PW01M	FLAT WASHER 8MM
607	PSB61M	CAP SCREW M10-1.5 X 20
608	PLW06M	LOCK WASHER 10MM
609	PSS04M	SET SCREW M6-1 X 12
610	P04930610	SMALL EXTENSION TABLE
611	P04930611	CAST IRON MAIN TABLE
612	P04930612	SUPPORT BRACE
613	P04930613	LARGE EXTENSION TABLE
614	PLW06M	LOCK WASHER 10MM
615	PSB72M	CAP SCREW M10-1.5 X 30
616	P04930616	DUST HOSE SUPPORT
617	PN02M	HEX NUT M10-1.5
618	PSB61M	CAP SCREW M10-1.5 X 20
619	PLW06M	LOCK WASHER 10MM
620	PW04M	FLAT WASHER 10MM

REF	PART #	DESCRIPTION
621	PN01M	HEX NUT M6-1
622	P04930622	RIGHT SUPPORT PLATE
623	PLW03M	LOCK WASHER 6MM
624	PB10M	HEX BOLT M6-1 X 25
625	P04930625	STUD M12-1.75 X 115
626	PN09M	HEX NUT M12-1.75
627	PSB11M	CAP SCREW M8-1.25 X 16
628	PLW04M	LOCK WASHER 8MM
629	P04930629	END WASHER
630	P04930630	ROUND RAIL
631	P04930631	RING STOP
632	PSS01M	SET SCREW M6-1 X 10
633	PW03M	FLAT WASHER 6MM
634	PW06M	FLAT WASHER 12MM
635	PLW05M	LOCK WASHER 12MM
636	PN09M	HEX NUT M12-1.75
637	P04930637	TABLE INSERT
638	PSB38M	CAP SCREW M5-.8 X 25
639	PW04M	FLAT WASHER 10MM
640	PSS10M	SET SCREW M10-1.5 X 20



Rip Fence

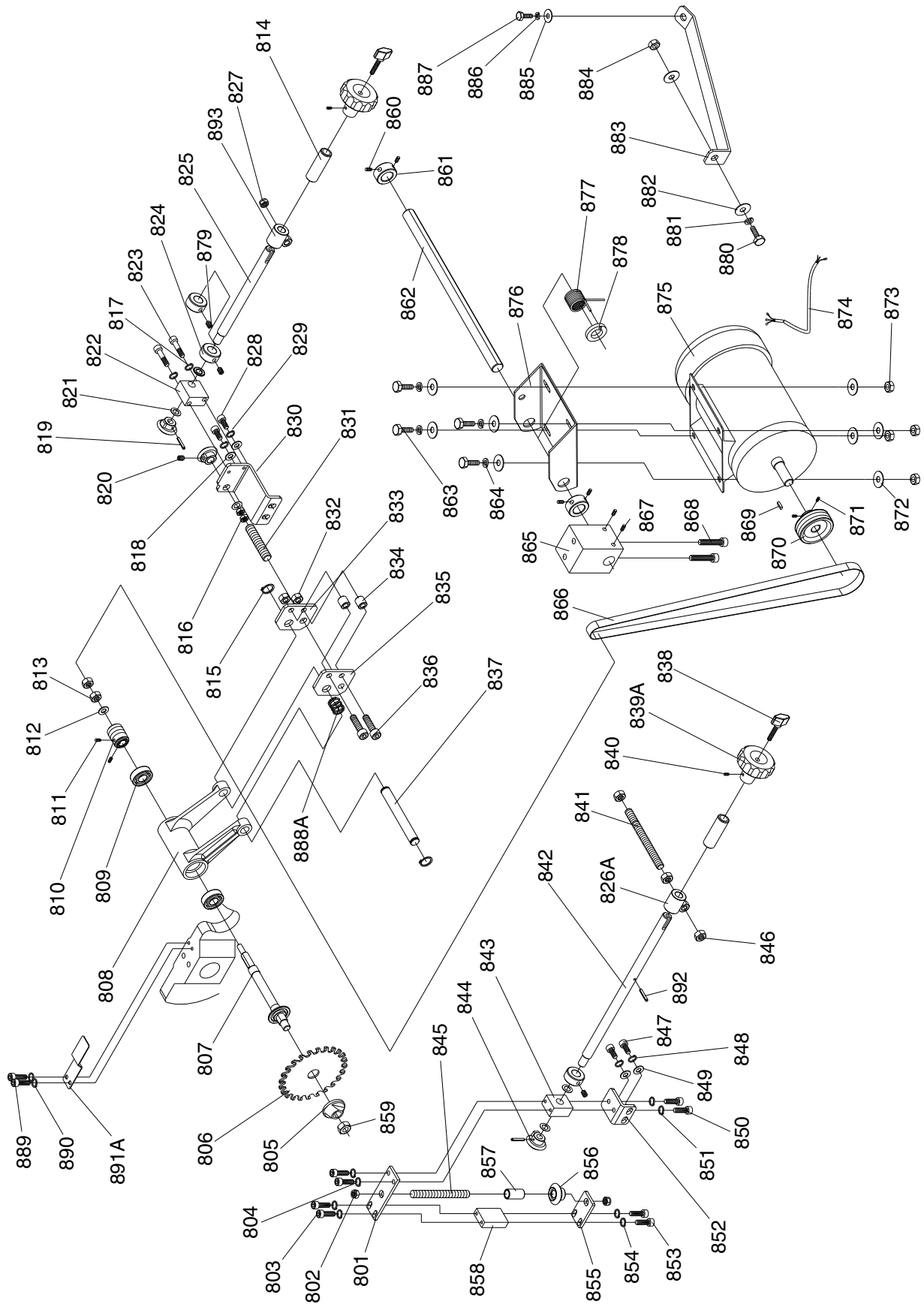


REF	PART #	DESCRIPTION
701V2	P04930701V2	ROTATE SHAFT V2.07.10
702	P04930702	HANDLE
703V2	P04930703V2	RIP FENCE HOUSING V2.07.10
703V2A	P04930703V2A	RIP FENCE ASSY V2.07.10
704	P04930704	KNOB SCREW M10-1.5 X 70
706	P04930706	LOCATE PLATE
707	P04930707	MICRO-ADJUST KNOB
710V2	P04930710V2	LOCATE BLOCK V2.07.10
711	PLN05M	LOCK NUT M10-1.5
712	P04930712	HANDLE
713V2	P04930713V2	CAM SHAFT V2.07.10
714V2	P04930714V2	WAVE WASHER 24MM V2.07.10
723	P04930723	CAM
724	PCAP11M	CAP SCREW M8-1.25 X 16
725	PSS05M	SET SCREW M5-.8 X 10

REF	PART #	DESCRIPTION
726V2	P04930726V2	CLAMP PLATE V2.07.10
727V2	P04930727V2	FENCE PLATE 1M V2.07.10
729V2	P04930729V2	ECCENTRIC SHAFT V2.07.10
730V2	P04930730V2	PLASTIC BEARING V2.07.10
731	PW03M	FLAT WASHER 6MM
732V2	P04930732V2	CAP SCREW M6-1 X 10 V2.07.10
733	P04930733	STUD M8-1.25 X 110
734	P04930734	ECCENTRIC RING
735	PB83M	HEX BOLT M6-1 X 16
736	PFH05M	FLAT HD SCR M5-.8 X 12
737	P04930737	PLUG
738	PFH30M	FLAT HD SCR M5-.8 X 8
739	P04930739	RING
740	P04930740	EXT. RETAINING RING 15MM
741	PLW03M	LOCK WASHER 6MM



Scoring Motor



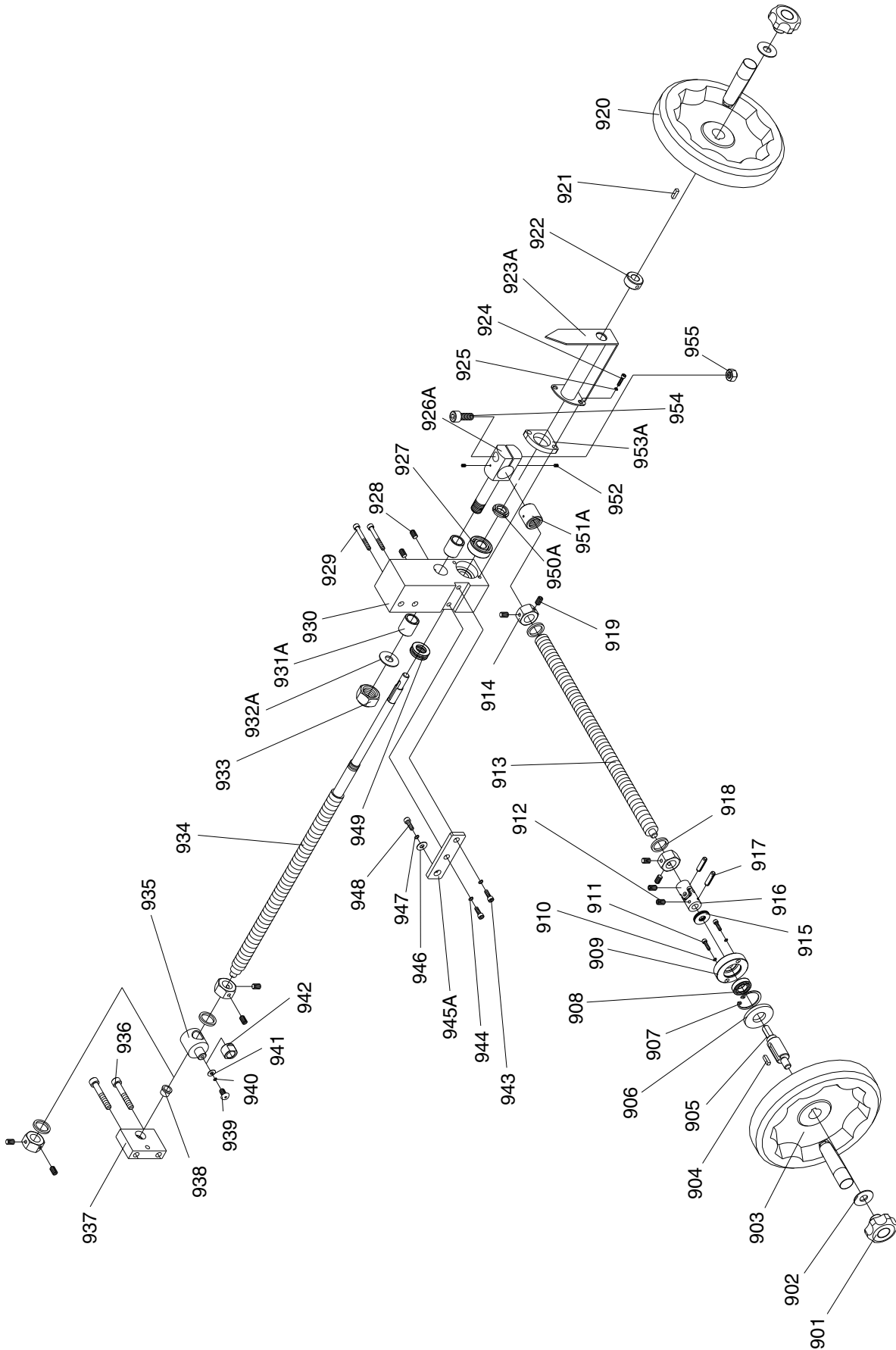
Scoring Motor Parts

REF	PART #	DESCRIPTION
801	P04930801	FIX PLATE
802	PLN09M	LOCK NUT M12-1.75
803	PSB01M	CAP SCREW M6-1 X 16
804	PLW03M	LOCK WASHER 6MM
805	P04930805	SCORING FLANGE
806	P04930806	SCORING SAW BLADE 22MM ARBOR
807	P04930807	SCORING ARBOR 22MM
808	P04930808	REGULATOR
809	P6202LLU	BEARING 6202LLU
810	P04930810	SCORING PULLEY
811	PSS02M	SET SCREW M6-1 X 6
812	PW01M	FLAT WASHER 8MM
813	PN03M	HEX NUT M8-1.25
814	P04930814	BUSHING
815	P04930815	CHECK RING
816	PN09M	HEX NUT M12-1.75
817	PLW03M	LOCK WASHER 6MM
818	PW01M	FLAT WASHER 8MM
819	PRP42M	ROLL PIN 3 X 20
820	PSS03M	SET SCREW M6-1 X 8
821	P04930821	ASBESTOS WASHER 13MM
822	P04930822	LOCATE PLATE
823	PSB30M	CAP SCREW M6-1 X 45
824	P04930824	LOCATE BUSHING
825	P04930825	ADJUST SHAFT
826A	P04930826A	BUSHING V2.10.07
827	PLN04M	LOCK NUT M8-1.25
828	PSB14M	CAP SCREW M8-1.25 X 20
829	PLW04M	LOCK WASHER 8MM
830	P04930830	FIXED PLATE
831	P04930831	SET SCREW M12-1.75 X 65
832	PLN04M	LOCK NUT M8-1.25
833	P04930833	FIXED PLATE
834	P04930834	BUSHING
835	P04930835	FIXED PLATE
836	PSB40M	CAP SCREW M8-1.25 X 35
837	P04930837	REGULATING SHAFT
838	P04930838	LOCK KNOB M6-1 X 40
839A	P04930839A	ADJUST KNOB V2.10.07
840	PSS05M	SET SCREW M5-.8 X 10
841	P04930841	STUD M8-1.25 X 120
842	P04930842	ADJUST SHAFT
843	P04930843	LOCATE PLATE
844	P04930844	GEAR
845	P04930845	STUD M12-1.75 X 100
846	PN03M	HEX NUT M8-1.25

REF	PART #	DESCRIPTION
847	PSB14M	CAP SCREW M8-1.25 X 20
848	PLW04M	LOCK WASHER 8MM
849	PW01M	FLAT WASHER 8MM
850	PSB02M	CAP SCREW M6-1 X 20
851	PLW03M	LOCK WASHER 6MM
852	P04930852	FIXED PLATE
853	PSB01M	CAP SCREW M6-1 X 16
854	PLW03M	LOCK WASHER 6MM
855	P04930855	GEAR FIXED PLATE
856	P04930856	GEAR
857	P04930857	BUSHING
858	P04930858	LOCATE BLOCK
859	PN09M	HEX NUT M12-1.75
860	PSS20M	SET SCREW M8-1.25 X 8
861	P04930861	BUSHING
862	P04930862	ROTATE SHAFT
863	PB07M	HEX BOLT M8-1.25 X 25
864	PLW04M	LOCK WASHER 8MM
865	P04930865	MOTOR LOCATE BLOCK
866	P04930866	FLAT BELT 15 X 1050
867	PSS14M	SET SCREW M8-1.25 X 12
868	PSB106M	CAP SCREW M8-1.25 X 90
869	PK23M	KEY 5 X 5 X 25
870	P04930870	MOTOR PULLEY 60HZ
871	PSS01M	SET SCREW M6-1 X 10
872	PW01M	FLAT WASHER 8MM
873	PN03M	HEX NUT M8-1.25
874	P04930874	SCORING MOTOR CORD
875	P04930875	SCORING MOTOR 0.75P-60HZ
876	P04930876	MOTOR PLATE
877	P04930877	SPRING
878	P04930878	COLLAR
879	PSS02M	SET SCREW M6-1 X 6
880	PB01M	HEX BOLT M10-1.5 X 30
881	PLW06M	LOCK WASHER 10MM
882	PW04M	FLAT WASHER 10MM
883	P04930883	FIX PLATE
884	PN02M	HEX NUT M10-1.5
885	P04930885	FENDER WASHER 8MM
886	PLW04M	LOCK WASHER 8MM
887	PB03M	HEX BOLT M8-1.25 X 16
888A	P04930888A	SPRING V2.08.07
889	PSB01M	CAP SCREW M6-1 X 16
890	PLW03M	LOCK WASHER 6MM
891A	P04930891A	SPRING PLATE V2.08.07
892	P04930892	ROLL PIN 3 X 20



Adjustment Wheels



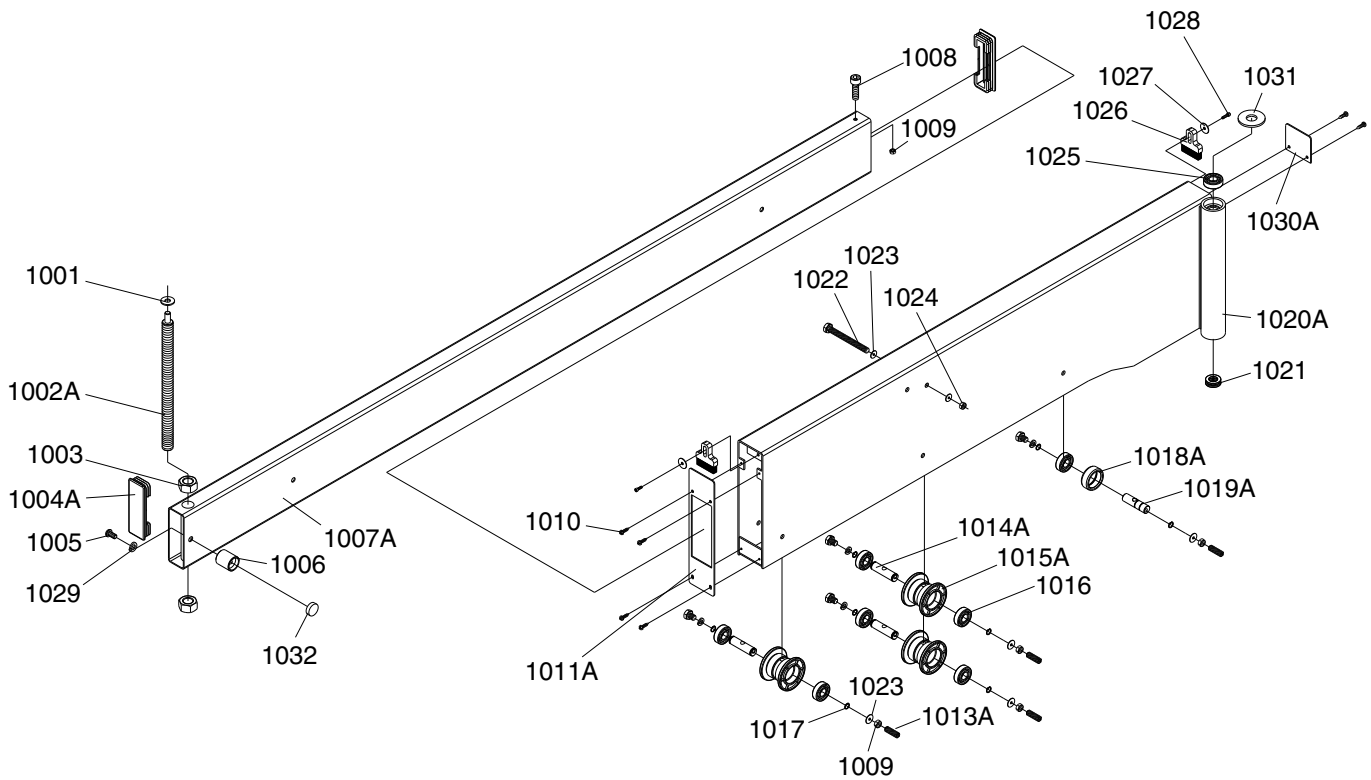
Adjustment Wheels Parts

REF	PART #	DESCRIPTION
901	P04930901	LOCK KNOB 10MM
902	PW04M	FLAT WASHER 10MM
903	P04930903	HAND WHEEL 8"
904	PK25M	KEY 7 X 7 X 20
905	P04930905	HAND WHEEL SHAFT
906	P04930906	SPACER
907	PR20M	INT RETAINING RING 28MM
908	P6902	BALL BEARING 6902
909	P04930909	LOCATE RING
910	PLW04M	LOCK WASHER 8MM
911	P04930911	CAP SCREW M8-1.25 20
912	PSS01M	SET SCREW M6-1 X 10
913	P04930913	SCREW TR20-2.0 X 2T
914	P04930914	SET NUT TR20-2.0 X 2T
915	P04930915	THRUST BEARING 10 Ø X 12MM
916	P04930916	FREE JOINT
917	PRP03M	ROLL PIN 5 X 20
918	P04930918	SPACER RING
919	PSS02M	SET SCREW M6-1 X 6
920	P04930920	HAND WHEEL 8"
921	PK12M	KEY 5 X 5 X 30
922	P04930922	LOCATE BUSHING
923A	P04930923A	FINGER GUIDE V2.08.07
924	PSB02M	CAP SCREW M6-1 X 20
925	PLW03M	LOCK WASHER 6MM
926A	P04930926A	BRACKET NUT V2.08.07
927	P6202	BALL BEARING 6202ZZ
928	PSS01M	SET SCREW M6-1 X 10

REF	PART #	DESCRIPTION
929	PSB66M	CAP SCREW M8-1.25 X 65
930	P04930930	LOCATE BLOCK
931A	P04930931A	SLEEVE V2.08.07
932A	P04930932A	COPPER WASHER 16MM V2.08.07
933	PLN07M	LOCK NUT M16-2
934	P04930934	LEADSCREW TR20-2.0 X 2T
935	P04930935	NUT TR20-2.0 X 2T
936	PSB05M	CAP SCREW M8-1.25 X 50
937	P04930937	LOCATE BLOCK
938	P04930938	BEARING SELF LUBRICATING
939	PSB04M	CAP SCREW M6-1 X 10
940	PLW03M	LOCK WASHER 6MM
941	PW03M	FLAT WASHER 6MM
942	P04930942	SLEEVE
943	PSB14M	CAP SCREW M8-1.25 X 20
944	PLW04M	LOCK WASHER 8MM
945A	P04930945A	LOCATE PLATE V2.08.07
946	PW01M	FLAT WASHER 8MM
947	PLW04M	LOCK WASHER 8MM
948	PSB14M	CAP SCREW M8-1.25 X 20
949	P51102	THRUST BEARING 51102
950A	P04930950A	HEX NUT M15-1 V2.08.07
951A	P04930951A	THREADED BUSHING V2.08.07
952	PSS47M	SET SCREW M3-.5 X 10
953A	P04930953A	SPACER PLATE V2.08.07
954	PSB40M	CAP SCREW M8-1.25 X 35
955	PLN04M	LOCK NUT M8-1.25



Swing Arm

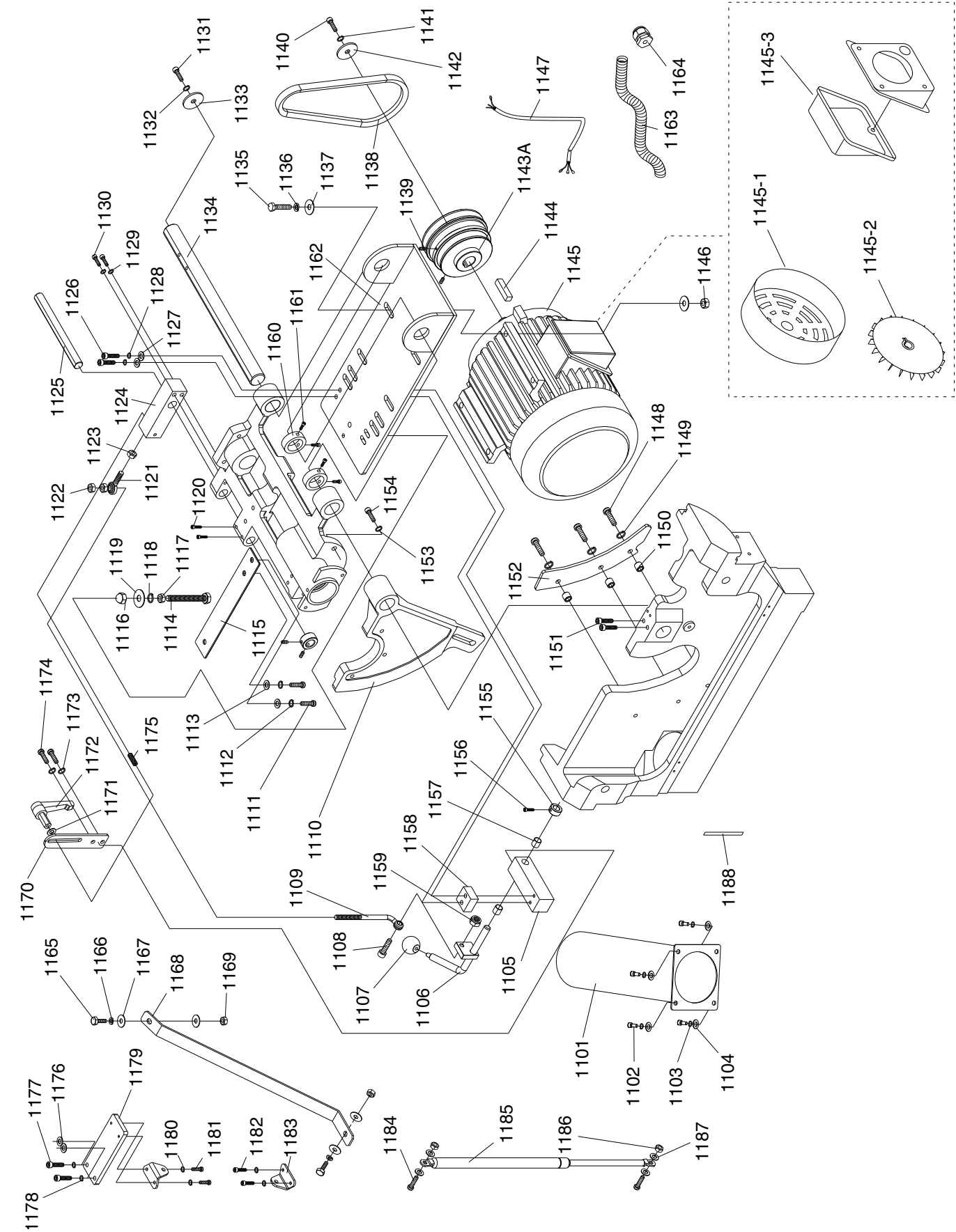


REF	PART #	DESCRIPTION
1001	P04931001	NYLON WASHER 10MM
1002A	P04931002A	SUPPORT SHAFT V2.08.07
1003	PN28M	HEX NUT M20-2.5
1004A	P04931004A	PLUG 40 X 120MM V2.08.07
1005	PSBS03M	BUTTON HD CAP SCR M8-1.25 X 16
1006	P04931006	MAGNETIC BRACKET
1007A	P04931007A	SLIDING TUBE V2.08.07
1008	PSB13M	CAP SCREW M8-1.25 X 30
1009	PN03M	HEX NUT M8-1.25
1010	PFS04M	FLANGE SCREW M4-.7 X 6
1011A	P04931011A	COVER V2.08.07
1013A	PSS21M	SET SCREW M8-1.25 X 25
1014A	P04931014A	SHAFT V2.08.07
1015A	P04931015A	ROLLER V2.08.07
1016	P6202	BALL BEARING 6202ZZ
1017	PRO5M	EXT RETAINING RING 15MM

REF	PART #	DESCRIPTION
1018A	P04931018A	RING V2.08.07
1019A	P04931019A	SHAFT V2.08.07
1020A	P04931020A	SWING ARM V2.08.07
1021	P51102	THRUST BEARING 51102
1022	PB82M	HEX BOLT M8-1.25 X 80
1023	PW01M	FLAT WASHER 8MM
1024	PLN04M	LOCK NUT M8-1.25
1025	P6202	BALL BEARING 6202ZZ
1026	P04931026	BRUSH
1027	PW03M	FLAT WASHER 6MM
1028	PSB02M	CAP SCREW M6-1 X 20
1029	PLW04M	LOCK WASHER 8MM
1030	P04931030	PLATE
1031	PW08M	FLAT WASHER 16MM
1032	P04931032	MAGNET



Main Motor



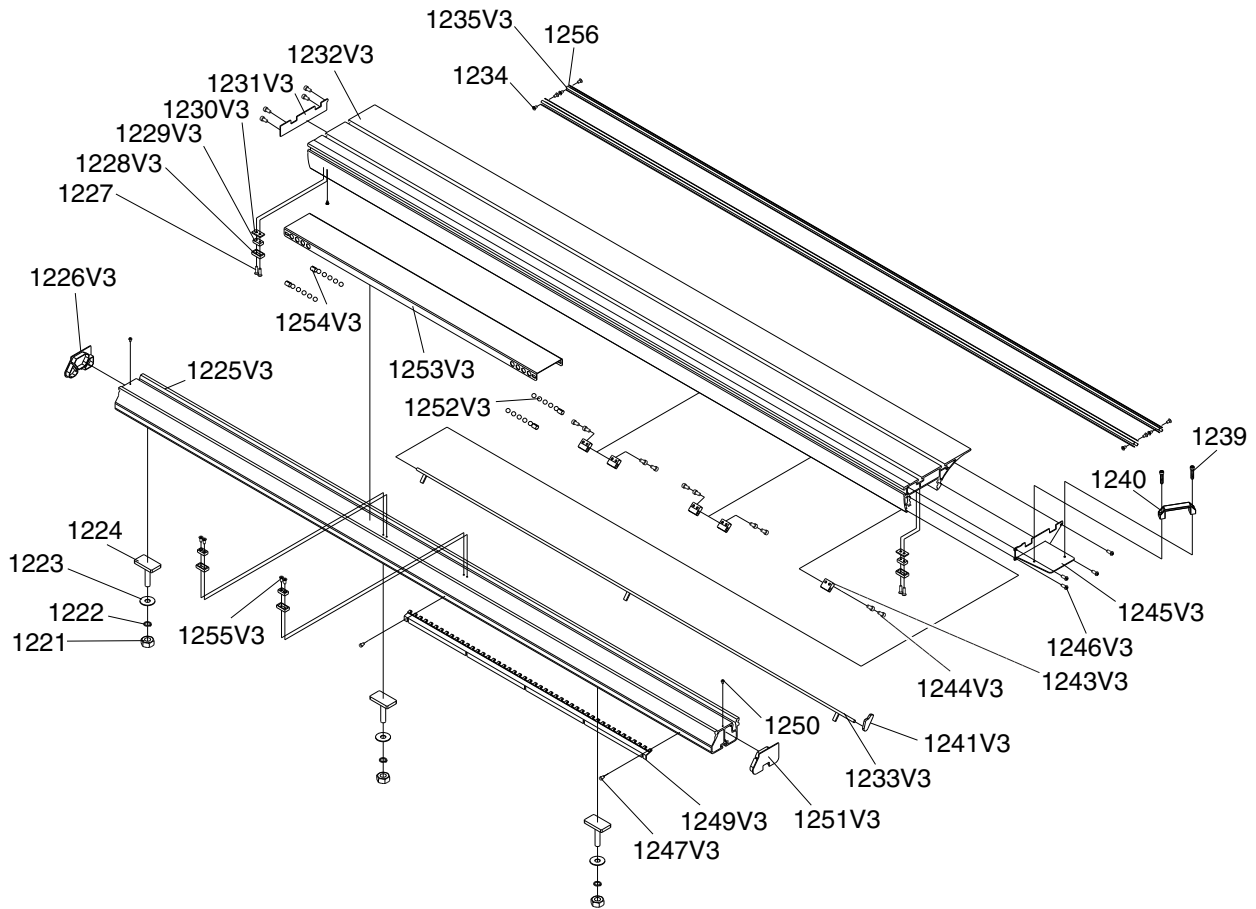
Main Motor Parts

REF	PART #	DESCRIPTION
1101	P04931101	DUST PORT
1102	PSB11M	CAP SCREW M8-1.25 X 16
1103	PLW04M	LOCK WASHER 8MM
1104	PW01M	FLAT WASHER 8MM
1105	P04931105	FIXED BLOCK
1106	P04931106	HANDLE
1107	P04931107	BALL KNOB M8-1.25
1108	PSB72M	CAP SCREW M10-1.5 X 30
1109	P04931109	SHACK BOLT
1110	P04931110	ROTATE PLATE
1111	PSBS10M	BUTTON HD CAP SCR M10-1.5 X 25
1112	PLW06M	LOCK WASHER 10MM
1113	PW04M	FLAT WASHER 10MM
1114	PB23M	HEX BOLT M10-1.5 X 100
1115	P04931115	SPRING PLATE
1116	PN43M	ACORN NUT M10-1.5
1117	PN02M	HEX NUT M10-1.5
1118	PLW06M	LOCK WASHER 10MM
1119	PW04M	FLAT WASHER 10MM
1120	PSB52M	CAP SCREW M8-1.25 X 10
1121	P04931121	BALL JOINT BEARING M10-1.5 X 65
1122	PN02M	HEX NUT M10-1.5
1123	PN02M	HEX NUT M10-1.5
1124	P04931124	FIXED BLOCK
1125	P04931125	SHAFT
1126	PSB45M	CAP SCREW M8-1.25 X 45
1127	PW01M	FLAT WASHER 8MM
1128	PLW04M	LOCK WASHER 8MM
1129	PLW04M	LOCK WASHER 8MM
1130	PSB60M	CAP SCREW M8-1.25 X 55
1131	PSB61M	CAP SCREW M10-1.5 X 20
1132	PLW06M	LOCK WASHER 10MM
1133	PW04M	FLAT WASHER 10MM
1134	P04931134	SHAFT
1135	PB31M	HEX BOLT M10-1.5 X 40
1136	PLW06M	LOCK WASHER 10MM
1137	PW04M	FLAT WASHER 10MM
1138	PVB30	V-BELT B-30 5L300
1139	PSS01M	SET SCREW M6-1 X 10
1140	PSB61M	CAP SCREW M10-1.5 X 20
1141	PLW06M	LOCK WASHER 10MM
1142	PW04M	FLAT WASHER 10MM
1143A	P04931143A	MAIN MOTOR PULLEY V2.08.07
1144	P04931144	KEY 8 X 7 X 50
1145	P04931145	MOTOR 10HP
1145-1	P04931145-1	MOTOR FAN COVER

REF	PART #	DESCRIPTION
1145-2	P04931145-2	MOTOR FAN
1145-3	P04931145-3	MOTOR JUNCTION BOX
1146	PN02M	HEX NUT M10-1.5
1147	P04931147	MAIN MOTOR CORD
1148	PSBS10M	BUTTON HD CAP SCR M10-1.5 X 25
1149	PLW06M	LOCK WASHER 10MM
1150	P04931150	COLLAR
1151	PSB61M	CAP SCREW M10-1.5 X 20
1152	P04931152	GIB PLATE
1153	PLW06M	LOCK WASHER 10MM
1154	PSB47M	CAP SCREW M10-1.5 X 40
1155	P04931155	COLLAR
1156	PSB04M	CAP SCREW M6-1 X 10
1157	P04931157	BUSHING BEARING DU1415
1158	P04931158	FIXED BLOCK
1159	PLN05M	LOCK NUT M10-1.5
1160	P04931160	BUSHING
1161	PSB130M	CAP SCREW M10-1.5 X 16
1162	P04931162	MAIN MOTOR PLATE
1163	P04931163	WAVE HOSE 2M
1164	P04931164	STRAIN RELIEF BG-04
1165	PB01M	HEX BOLT M10-1.5 X 30
1166	PLW06M	LOCK WASHER 10MM
1167	PW04M	FLAT WASHER 10MM
1168	P04931168	FIX PLATE
1169	PN02M	HEX NUT M10-1.5
1170	P04931170	FIX PLATE
1171	PW01M	FLAT WASHER 8MM
1172	P04931172	FASTEN HANDLE 8MM
1173	PLW04M	LOCK WASHER 8MM
1174	PSB14M	CAP SCREW M8-1.25 X 20
1175	PSS19M	SET SCREW M8-1.25 X 30
1176	PW01M	FLAT WASHER 8MM
1177	PSB31M	CAP SCREW M8-1.25 X 25
1178	PLW04M	LOCK WASHER 8MM
1179	P04931179	FIXED PLATE
1180	PLW03M	LOCK WASHER 6MM
1181	PSB02M	CAP SCREW M6-1 X 20
1182	PSB26M	CAP SCREW M6-1 X 12
1183	P04931183	FIXED PLATE
1184	PSB14M	CAP SCREW M8-1.25 X 20
1185	P04931185	GAS PRESSURE REGULATOR
1186	PLN04M	LOCK NUT M8-1.25
1187	PW01M	FLAT WASHER 8MM
1188	P04931188	SPONGE



Sliding Table

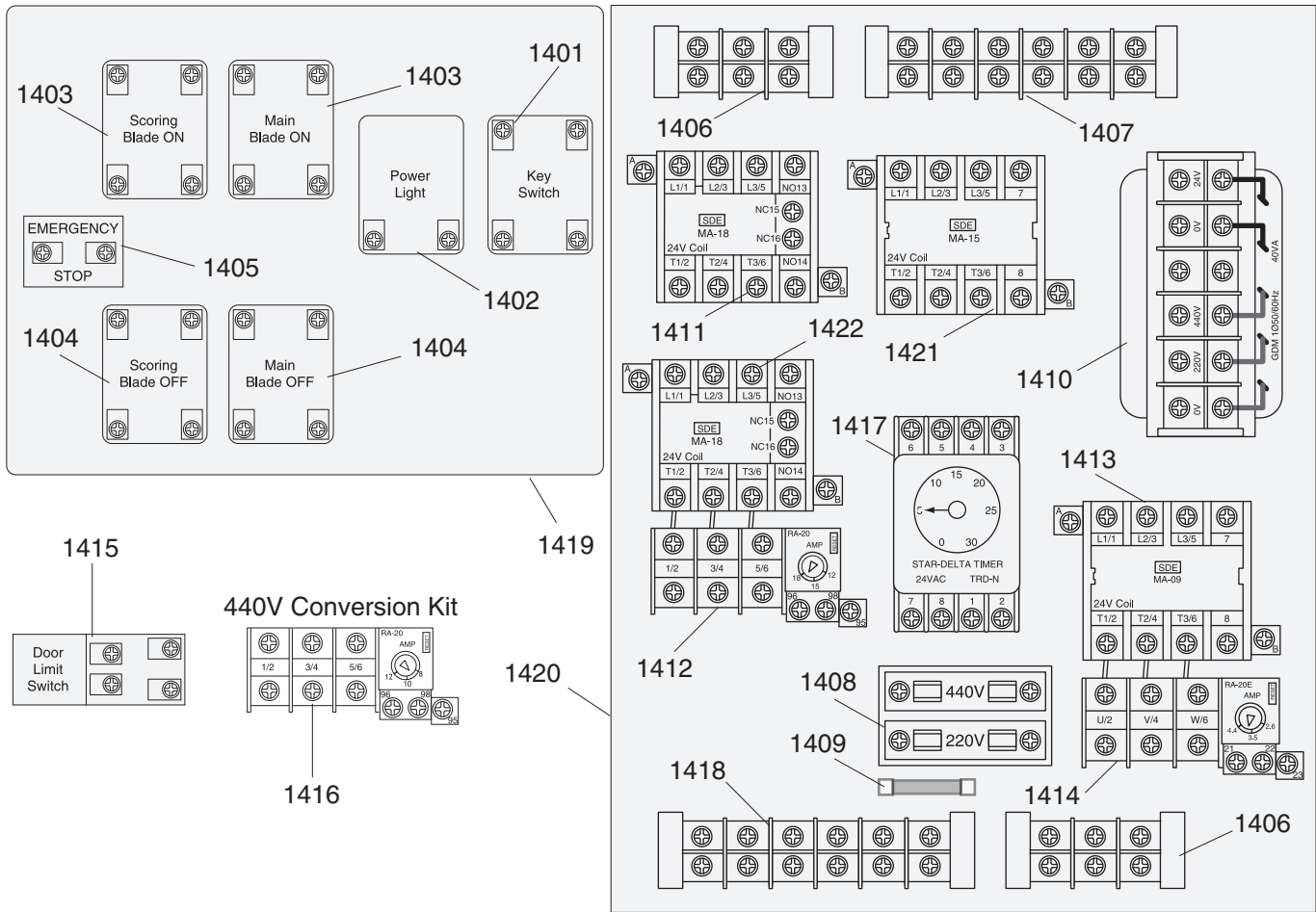


REF	PART #	DESCRIPTION
1221	PN09M	HEX NUT M12-1.75
1222	PLW05M	LOCK WASHER 12MM
1223	PW06M	FLAT WASHER 12MM
1224	P04931224	T-BOLT M12-1.75 X 40
1225V3	P04931225V3	BOTTOM BASE 3200MM V3.07.10
1226V3	P04931226V3	COVER V3.07.10
1227	PFH26M	FLAT HD SCR M6-1 X 30
1228V3	P04931228V3	RUBBER BLOCK V3.07.10
1229V3	P04931229V3	LOCATE BLOCK V3.07.10
1230V3	P04931230V3	PLATE V3.07.10
1231V3	P04931231V3	COVER V3.07.10
1232V3	P04931232V3	TOP BASE 3200MM V3.07.10
1233V3	P04931233V3	LOCATE ROD V3.07.10
1234	PFH43M	FLAT HD SCR M6-1 X 10
1235V3	P04931235V3	STEEL RAIL V3.07.10
1239	PCAP58M	CAP SCREW M8-1.25 X 12

REF	PART #	DESCRIPTION
1240	P04931240	HANDLE
1241V3	P04931241V3	LOCK HANDLE V3.07.10
1243V3	P04931243V3	LOCATE BLOCK V3.07.10
1244V3	PFH07M	FLAT HD SCR M5-.8 X 10
1245V3	P04931245V3	RIGHT END PLATE V3.07.10
1246V3	PBHS09M	BUTTON HD CAP SCR M6-1 X 12
1247V3	PCAP115M	BUTTON HD CAP SCR M6-1 X 16
1249V3	P04931249V3	TEETH LOCATE PLATE V3.07.10
1250	PHTEK19M	TAP SCREW M5 X 16
1251V3	P04931251V3	COVER V3.07.10
1252V3	P04931252V3	STEEL BALL 16.6MM V3.07.10
1253V3	P04931253V3	SLIDING BOTTOM V3.07.10
1254V3	P04931254V3	WOOL PAD V3.07.10
1255V3	PBHS05M	BUTTON HD CAP SCR M6-1 X 20
1256	P04931256	ADHESIVE



Electrical Components

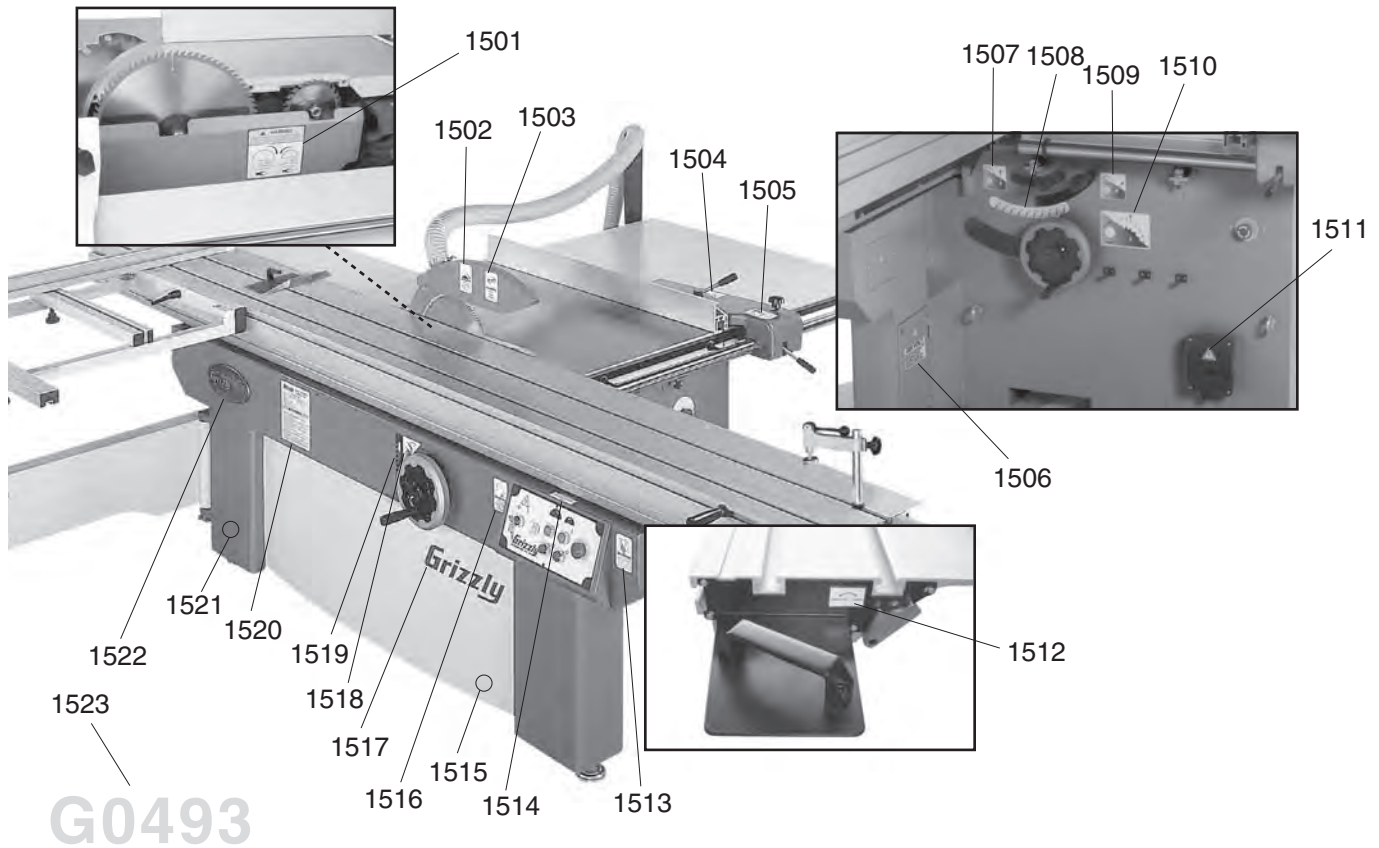


REF	PART #	DESCRIPTION
1401	P04510001	KEY SWITCH
1402	P04510002	POWER LAMP
1403	P04510003	ON SWITCH BUTTON
1404	P04510004	OFF SWITCH BUTTON
1405	P04510005	E-STOP BUTTON
1406	P04510006	TERMINAL 3 CIRCUIT (25A)
1407	P04510007	TERMINAL 6 CIRCUIT (15A)
1408	P04510008	FUSE BASE
1409	P04510009	FUSE 250V 10A
1410	P04510010A	TRANSFORMER
1411	P04510011A	MAG CONTACTOR MA-18 24V

REF	PART #	DESCRIPTION
1412	P04510012A	OL RELAY RA-20 (12-18A)
1413	P04510013	MAG CONTACTOR MA-09 24V
1414	P04510014	OL RELAY RA-20E (2.6-4.4A)
1415	P04510015	LIMIT SWITCH
1416	P04510016	440V CONV. KIT (OLR RA-20 8-12A)
1417	P04510017	STAR-DELTA TIMER (24VAC)
1418	P04510018	TERMINAL 6 CIRCUIT (25A)
1419	P04510019	CONTROL PANEL ASSEMBLY
1420	P04510020	ELECTRICAL BOX ASSEMBLY
1421	P04510021	MAG CONTACTOR MA-15 24V
1422	P04510022	MAG CONTACTOR MA-18 24V



Parts List



REF	PART #	DESCRIPTION
1501	P04931501	LOWER BLADE GUARD LABEL
1502	P04931502	UPPER BLADE GUARD LABEL
1503	PLABEL-11	SAFETY GLASSES LABEL
1504	P04931504	LOOSEN/TIGHTEN FENCE LABEL
1505	P04931505	KICKBACK WARNING LABEL
1506	PLABEL-34	PREWIRED 220V LABEL
1507	P04931507	SCORING VERTICAL ADJUST LABEL
1508	P04931508	BLADE TILT SCALE LABEL
1509	P04931509	SCORING HORIZONTAL ADJUST LABEL
1510	P04931510	MAIN BLADE ELEVATION LABEL
1511	PLABEL-14	ELECTRICITY LABEL
1512	P04931512	SLIDING TABLE LOCK LABEL

REF	PART #	DESCRIPTION
1513	PLABEL-12A	READ MANUAL LABEL
1514	P04931514	TRAINED PERSONNEL ONLY LABEL
1515	PPAINT-11	"PUTTY" COLOR TOUCH-UP PAINT
1516	P04931516	DISCONNECT POWER LABEL
1517	P04931517	"GRIZZLY" LABEL
1518	P04931518	BLADE TILT LABEL
1519	P04931519	MAIN BLADE ELEVATION SCALE
1520	P04931520	G0493 MACHINE ID LABEL
1521	PPAINT-1	"GRIZZLY GREEN" TOUCH-UP PAINT
1522	G8589	GRIZZLY NAMEPLATE-LARGE CAST
1523	P04931523	G0493 MODEL NUMBER LABEL

WARNING

Safety labels warn about machine hazards and ways to prevent injury. The owner of this machine **MUST** maintain the original location and readability of the labels on the machine. If any label is removed or becomes unreadable, **REPLACE** that label before using the machine again. Contact Grizzly at (800) 523-4777 or www.grizzly.com to order new labels.

