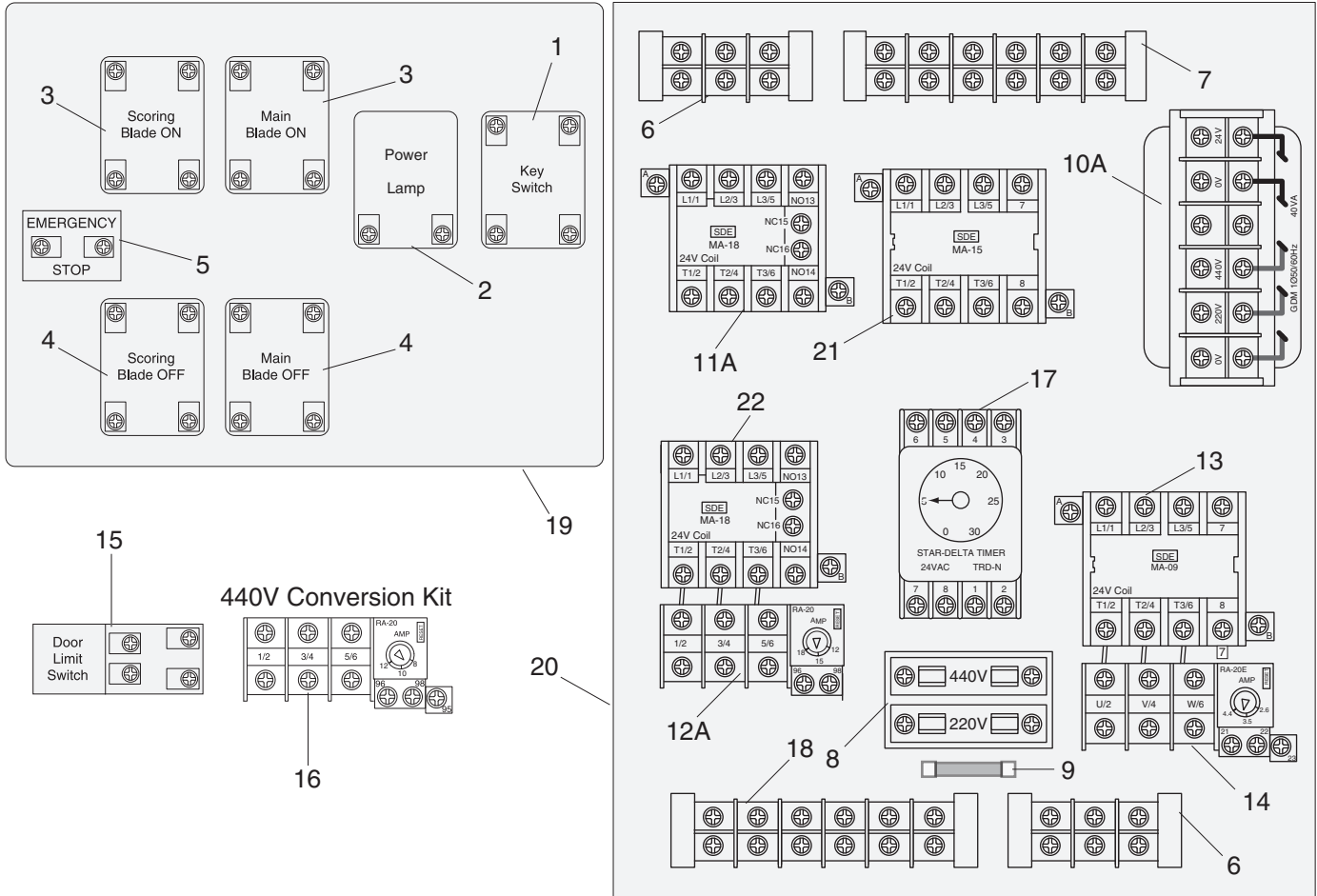


SECTION 10: PARTS

Electrical Components

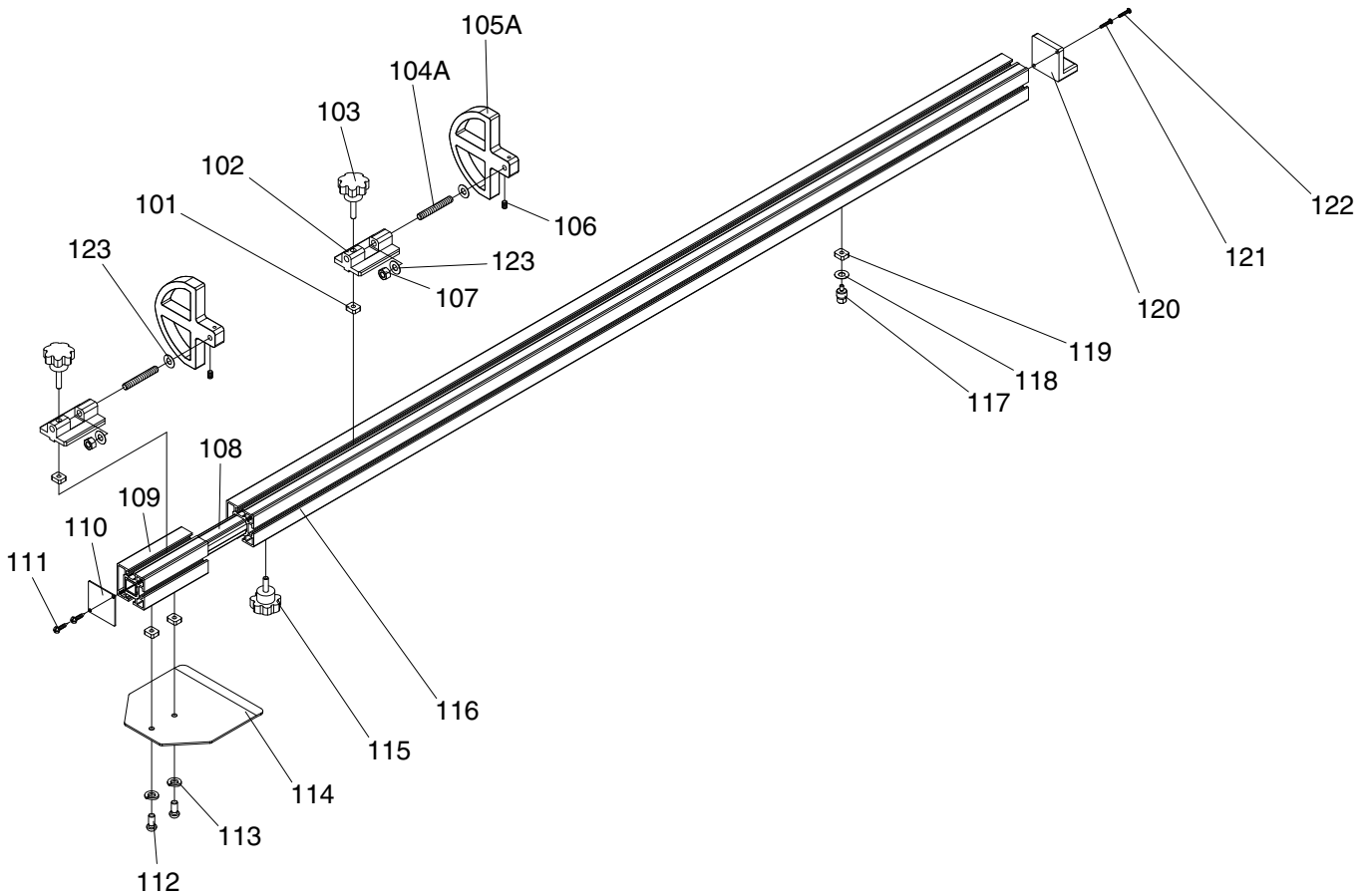


REF	PART #	DESCRIPTION
1	P04510001	KEY SWITCH
2	P04510002	POWER LAMP
3	P04510003	ON BUTTON
4	P04510004	OFF BUTTON
5	P04510005	EMERGENCY STOP BUTTON
6	P04510006	TERMINAL BAR 3P
7	P04510007	TERMINAL BAR 7P
8	P04510008	FUSE BASE
9	P04510009	FUSE 250V 10A
10A	P04510010A	TRANSFORMER V2.03.07
11A	P04510011A	MAGNETIC CONTACTOR MA-18 24V

REF	PART #	DESCRIPTION
12A	P04510012A	OL RELAY SDE RA-20 12-18A
13	P04510013	CONTACTOR SDE MA-09 24V
14	P04510014	OL RELAY SDE RA-20E 2.6-4.4A
15	P04510015	LIMIT SWITCH
16	P04510016	CONVERSION KIT 440V OLR RA-20 8-12A
17	P04510017	STAR DELTA TIMER 24V
18	P04510018	TERMINAL 6 CIRCUIT 25A
19	P04510019	CONTROL PANEL ASSY
20	P04510020	ELECTRICAL BOX ASSY
21	P04510021	MAGNETIC CONTACTOR MA-15 24V
22	P04510022	MAGNETIC CONTACTOR MA-18 24V



Crosscut Fence

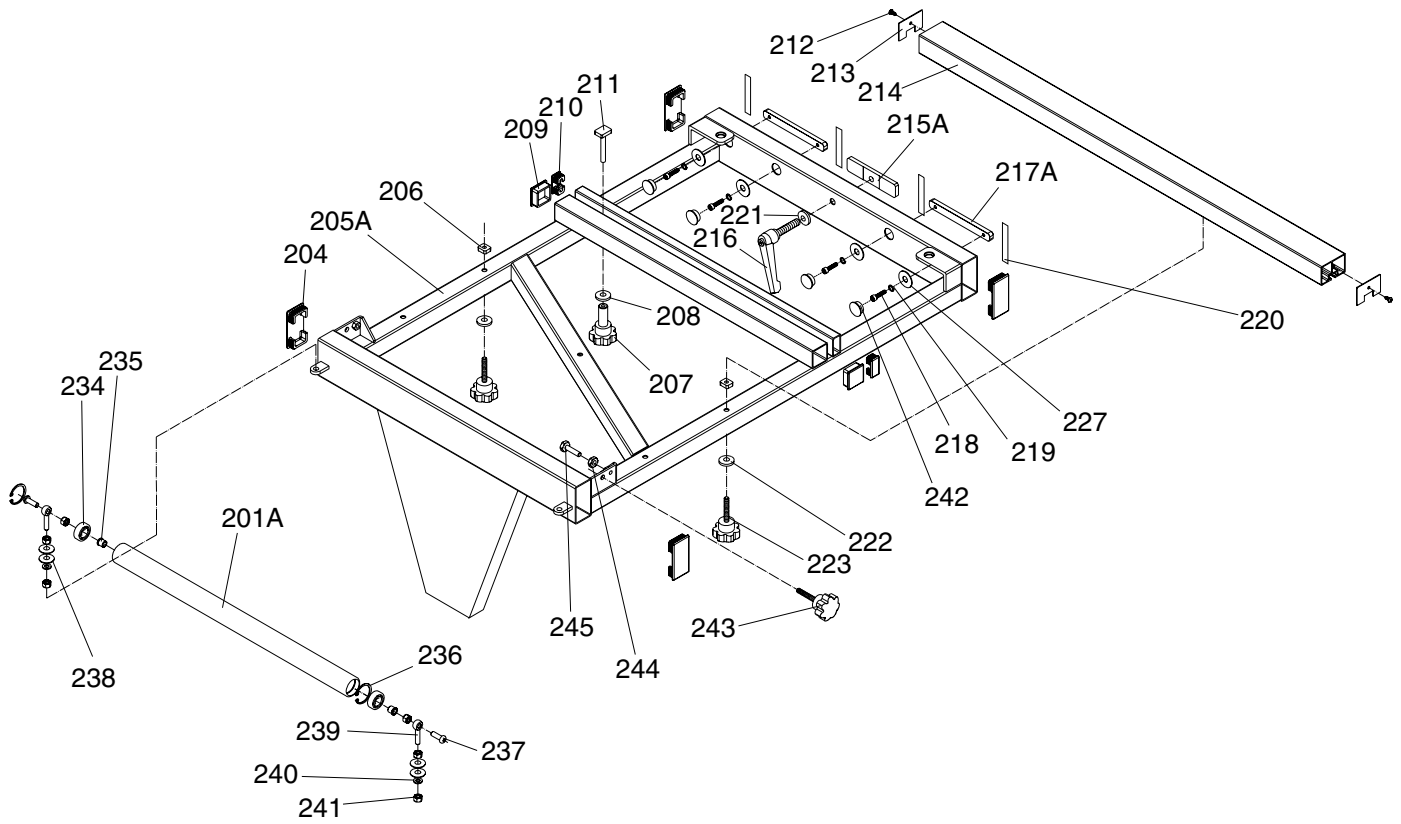


REF	PART #	DESCRIPTION
101	P04510101	T-NUT M8-1.25
102	P04510102	STOP BRACKET
103	P04510103	KNOB M8-1.25 X 40
104A	P04510104A	STUD-FT M10-1.5 X 70 V2.06.07
105A	P04510105A	FLIP STOP V2.06.07
106	PSS01M	SET SCREW M6-1 X 10
107	PLN05M	LOCK NUT M10-1.5
108	P04510108	SQUARE TUBE
109	P04510109	FENCE EXTENSION
110	P04510110	COVER
111	PHTEK7	TAP SCREW #8 X 3/8"
112	PBHS03M	BUTTON HD CAP SCR M8-1.25 X 16

REF	PART #	DESCRIPTION
113	PLW04M	LOCK WASHER 8MM
114	P04510114	LOCATE PLATE
115	P04510115	KNOB SCREW M8-1.25 X 25
116	P04510116	SQUARE FENCE
117	P04510117	CENTER BOLT M8-1.25 X 10
118	P04510118	FIBER WASHER 10 X 18
119	P04510101	T-NUT M8-1.25
120	P04510120	ROTATE BLOCK
121	PS38M	PHLP HD SCR M4-.7 X 10
122	PS25M	PHLP HD SCR M4-.7 X 35
123	P04510118	FIBER WASHER 10 X 18



Crosscut Table

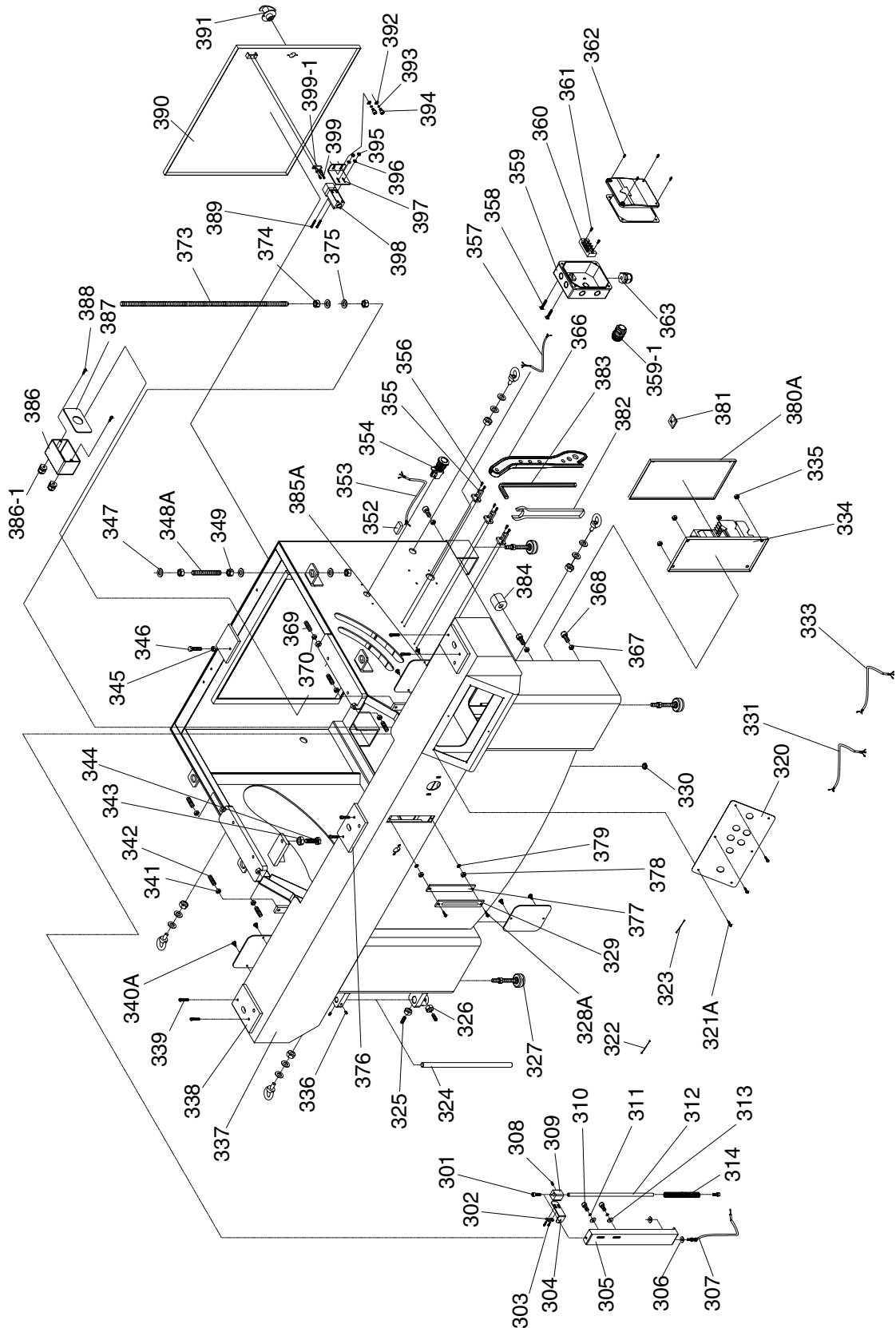


REF	PART #	DESCRIPTION
201A	P04930103	ROLLER V2.06.06
204	P04510204	PLUG 80 X 40MM
205A	P04930105	SUPPORT FRAME V2.06.06
206	P04510101	T-NUT M8-1.25
207	P04510207	KNOB W/M8-1.25 X 25 SHOULDER
208	PWF08M	FENDER WASHER 8MM
209	P04510209	PLUG 38 X 38MM
210	P04510210	PLUG 40 X 20MM
211	P04510211	T-BOLT M8-1.25 X 60
212	PHTEK7	TAP SCREW #8 X 3/8"
213	P04510213	COVER
214	P04510214	SQUARE BRACE
215A	P04930115A	T-NUT M12-1.75 V2.06.06
216	P04510216	LOCK HANDLE M12-1.75 X 55
217A	P04930117A	T-NUT M8-1.25 V2.06.06
218	PCAP115M	BUTTON HD CAP SCR M6-1 X 16
219	PLW03M	LOCK WASHER 6MM

REF	PART #	DESCRIPTION
220	P04510220	PAD
221	PWF12M	FENDER WASHER 12MM
222	PWF08M	FENDER WASHER 8MM
223	P04510223	KNOB SCREW M8-1.25 X 50
227	PW03M	FLAT WASHER 6MM
234	P6201ZZ	BALL BEARING 6201ZZ
235	P04510235	BUSHING
236	PR29M	INT RETAINING RING 32MM
237	PBHS23M	BUTTON HD CAP SCR M8-1.25 X 25
238	PW18M	FLAT WASHER 18MM
239	P04510239	EYE BOLT M8-1.25 X 40
240	PLW04M	LOCK WASHER 8MM
241	PN03M	HEX NUT M8-1.25
242	P04510242	PLUG
243	P04510223	KNOB SCREW M8-1.25 X 50
244	PN03M	HEX NUT M8-1.25
245	PB26M	HEX BOLT M8-1.25 X 30



Cabinet Body



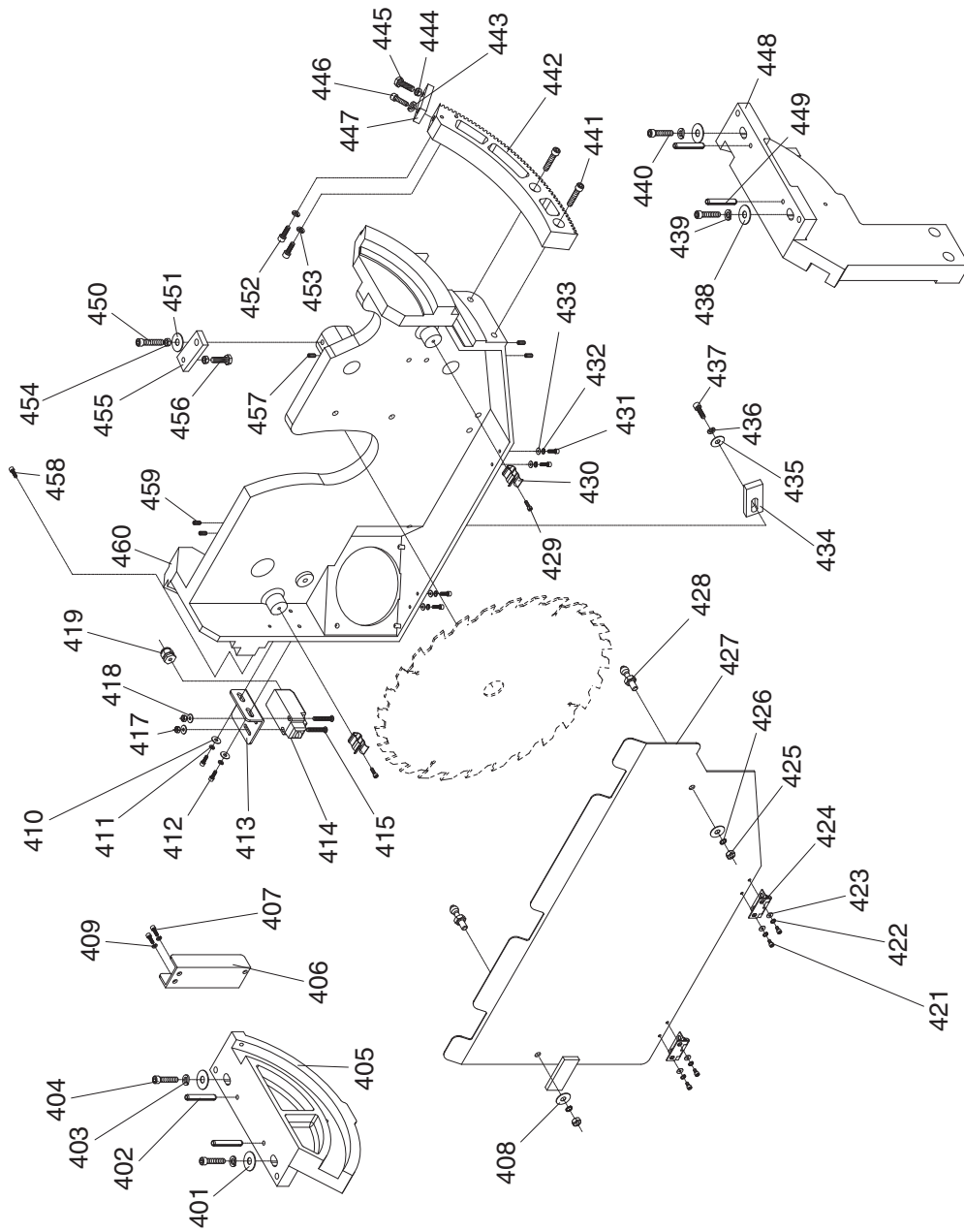
Cabinet Body Parts List

REF	PART #	DESCRIPTION
301	PCAP50M	CAP SCREW M5-.8 X 10
302	PWF05M	FENDER WASHER 5MM
303	PS09M	PHLP HD SCR M5-.8 X 10
304	P04510304	POINTER
305	P04510305	FIX PLATE
306	PW03M	FLAT WASHER 6MM
307	P04510307	STEEL CABLE
308	PSS05M	SET SCREW M5-.8 X 10
309	P04510309	INDICATOR BLOCK
310	PCAP26M	CAP SCREW M6-1 X 12
311	PLW03M	LOCK WASHER 6MM
312	P04510312	SHAFT
313	PW03M	FLAT WASHER 6MM
314	P04510314	COMPRESSION SPRING 13.6 X 300
320	P04510320	CONTROL PANEL FACE
321A	PHTEK14M	TAP SCREW M4 X 6
322	P04510322	CORD FOR GUARD LIMIT SWITCH
323	P04510323	CORD FOR DOOR LIMIT SWITCH
324	P04510324	SHAFT
325	PSS10M	SET SCREW M10-1.5 X 20
326	PN02M	HEX NUT M10-1.5
327	P04510327	ADJUST FOOT M16 X 100
328A	PHTEK8M	TAP SCREW M4 X 20
329	P04510329	TILT SCALE
330	P04510330	PLUG
331	P04510331	CONTROL PANEL POWER CORD
333	P04510333	POWER CORD
334	P04510334	ELECTRIC PANEL
335	PFN02M	FLANGE NUT M6-1
336	PSS04M	SET SCREW M6-1 X 12
337	P04510337	MACHINE BODY
338	P04510338	LOCATE BLOCK
339	PCAP11M	CAP SCREW M8-1.25 X 16
340A	PFS04M	FLANGE SCREW M4-.7 X 6
341	PN02M	HEX NUT M10-1.5
342	PSS84M	SET SCREW M10-1.5 X 35
343	PN09M	HEX NUT M12-1.75
344	PB33M	HEX BOLT M12-1.75 X 50
345	PN03M	HEX NUT M8-1.25
346	PB26M	HEX BOLT M8-1.25 X 30
347	PWF14M	FENDER WASHER 14MM
348A	P04510348A	STUD-FT M14-2 X 110 V2.06.07
349	PN32M	HEX NUT M14-2
352	P04510352	WIRE CONNECTOR
353	P04510353	CORD FOR STOP BUTTON

REF	PART #	DESCRIPTION
354	P04510005	EMERGENCY STOP BUTTON
355	P04510355	HANGER
356	PFS08M	FLANGE SCREW M5-.8 X 16
357	P04510357	POWER CORD
358	PBHS05M	BUTTON HD CAP SCR M6-1 X 20
359	P04510359	POWER BOX
359-1	P04510359-1	STRAIN RELIEF
360	P04510360	TERMINAL 4C
361	PS05M	PHLP HD SCR M5-.8 X 8
362	PBHS06M	BUTTON HD CAP SCR M5-.8 X 12
363	P04510363	STRAIN RELIEF M20
366	P04510366	PUSH STICK
367	PLN03M	LOCK NUT M6-1
368	PCAP02M	CAP SCREW M6-1 X 20
369	PSS39M	SET SCREW M10-1.5 X 50
370	PN02M	HEX NUT M10-1.5
373	P04510373	STUD-FT M12-1.75 X 720
374	PN09M	HEX NUT M12-1.75
375	PW06M	FLAT WASHER 12MM
376	P04510376	LOCATE BLOCK
377	P04510377	PLATE
378	PW05M	FLAT WASHER 4MM
379	PN04M	HEX NUT M4-.7
380A	P04510380A	PLATE V2.03.08
381	P04510381	BLOCK
382	P04510382	ARBOR WRENCH 30MM
383	P04510383	ARBOR WRENCH 8 X 45 X 205
384	P04510384	CUSHION
385A	P04510385A	ACCESS PLATE V2.03.08
386	P04510386	SWITCH BOX
386-1	P04510386-1	STRAIN RELIEF
387	P04510387	PAD
388	PS06M	PHLP HD SCR M5-.8 X 20
389	PS25M	PHLP HD SCR M4-.7 X 35
390	P04510390	PLATE
391	P04510391	DOOR KNOB
392	PW03M	FLAT WASHER 6MM
393	PLW03M	LOCK WASHER 6MM
394	PCAP04M	CAP SCREW M6-1 X 10
395	PN04M	HEX NUT M4-.7
396	PW05M	FLAT WASHER 4MM
397	P04510397	SAFETY SWITCH BRACKET
398	P04510398	DOOR SAFETY SWITCH
399	PS02M	PHLP HD SCR M4-.7 X 12
399-1	PLW02M	LOCK WASHER 4MM



Main Blade



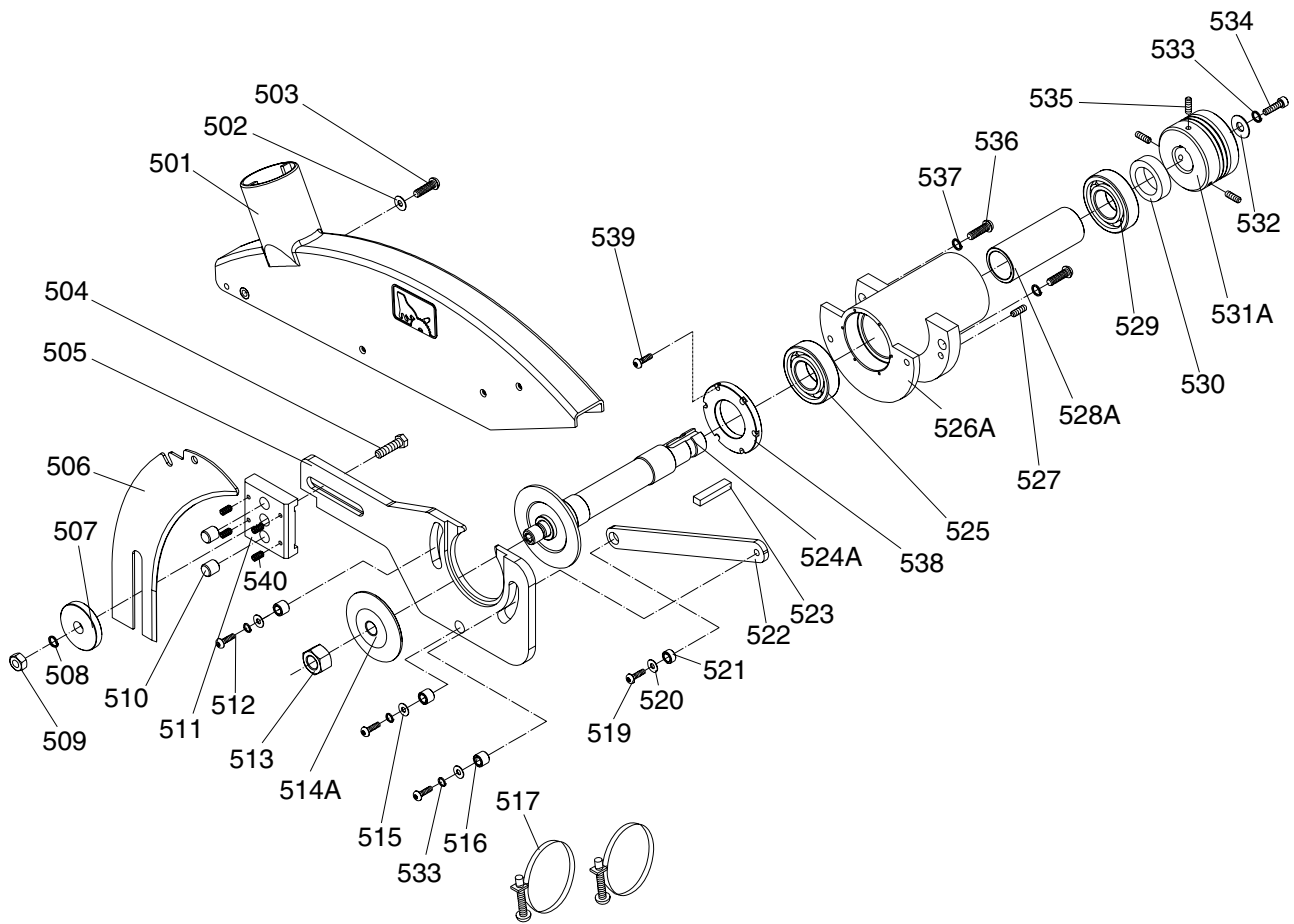
Main Blade Parts List

REF	PART #	DESCRIPTION
401	PW04M	FLAT WASHER 10MM
402	PRP58M	ROLL PIN 6 X 45
403	PLW06M	LOCK WASHER 10MM
404	PCAP84M	CAP SCREW M10-1.5 X 35
405	P04510405	TRUNNION BRACKET LEFT
406	P04510406	LOCATE PLATE
407	PCAP26M	CAP SCREW M6-1 X 12
408	PW01M	FLAT WASHER 8MM
409	PLW03M	LOCK WASHER 6MM
410	PW03M	FLAT WASHER 6MM
411	PLW03M	LOCK WASHER 6MM
412	PCAP04M	CAP SCREW M6-1 X 10
413	P04510413	SAFETY SWITCH BRACKET
414	P04510414	DOOR SAFETY SWITCH
415	PS25M	PHLP HD SCR M4-.7 X 35
417	PN04M	HEX NUT M4-.7
418	PW05M	FLAT WASHER 4MM
419	P04510419	STRAIN RELIEF PG11
421	PCAP97M	CAP SCREW M5-.8 X 6
422	PLW01M	LOCK WASHER 5MM
423	PW02M	FLAT WASHER 5MM
424	P04510424	HINGE
425	PN03M	HEX NUT M8-1.25
426	PLW04M	LOCK WASHER 8MM
427	P04510427	COVER
428	P04510428	LATCH BOLT
429	PCAP50M	CAP SCREW M5-.8 X 10
430	P04510430	CATCH
431	PCAP50M	CAP SCREW M5-.8 X 10

REF	PART #	DESCRIPTION
432	PLW01M	LOCK WASHER 5MM
433	PW02M	FLAT WASHER 5MM
434	P04510434	FIX BLOCK
435	PWF08M	FENDER WASHER 8MM
436	PLW04M	LOCK WASHER 8MM
437	PCAP31M	CAP SCREW M8-1.25 X 25
438	PW04M	FLAT WASHER 10MM
439	PLW06M	LOCK WASHER 10MM
440	PCAP84M	CAP SCREW M10-1.5 X 35
441	PCAP72M	CAP SCREW M10-1.5 X 30
442	P04510442	TRUNNION
443	PLW04M	LOCK WASHER 8MM
444	PN03M	HEX NUT M8-1.25
445	PB26M	HEX BOLT M8-1.25 X 30
446	PCAP14M	CAP SCREW M8-1.25 X 20
447	P04510447	LOCATE BLOCK
448	P04510448	TRUNNION BRACKET RIGHT
449	PRP58M	ROLL PIN 6 X 45
450	PCAP12M	CAP SCREW M8-1.25 X 40
451	PW01M	FLAT WASHER 8MM
452	PCAP07M	CAP SCREW M6-1 X 30
453	PLW03M	LOCK WASHER 6MM
454	PN03M	HEX NUT M8-1.25
455	P04510455	LOCATE BLOCK
456	PB28M	HEX BOLT M8-1.25 X 60
457	PSS06M	SET SCREW M8-1.25 X 16
458	PCAP33M	CAP SCREW M5-.8 X 12
459	PSS75M	SET SCREW M10-1.5 X 16
460	P04510460	TRUNNION BASE



Main Blade Arbor

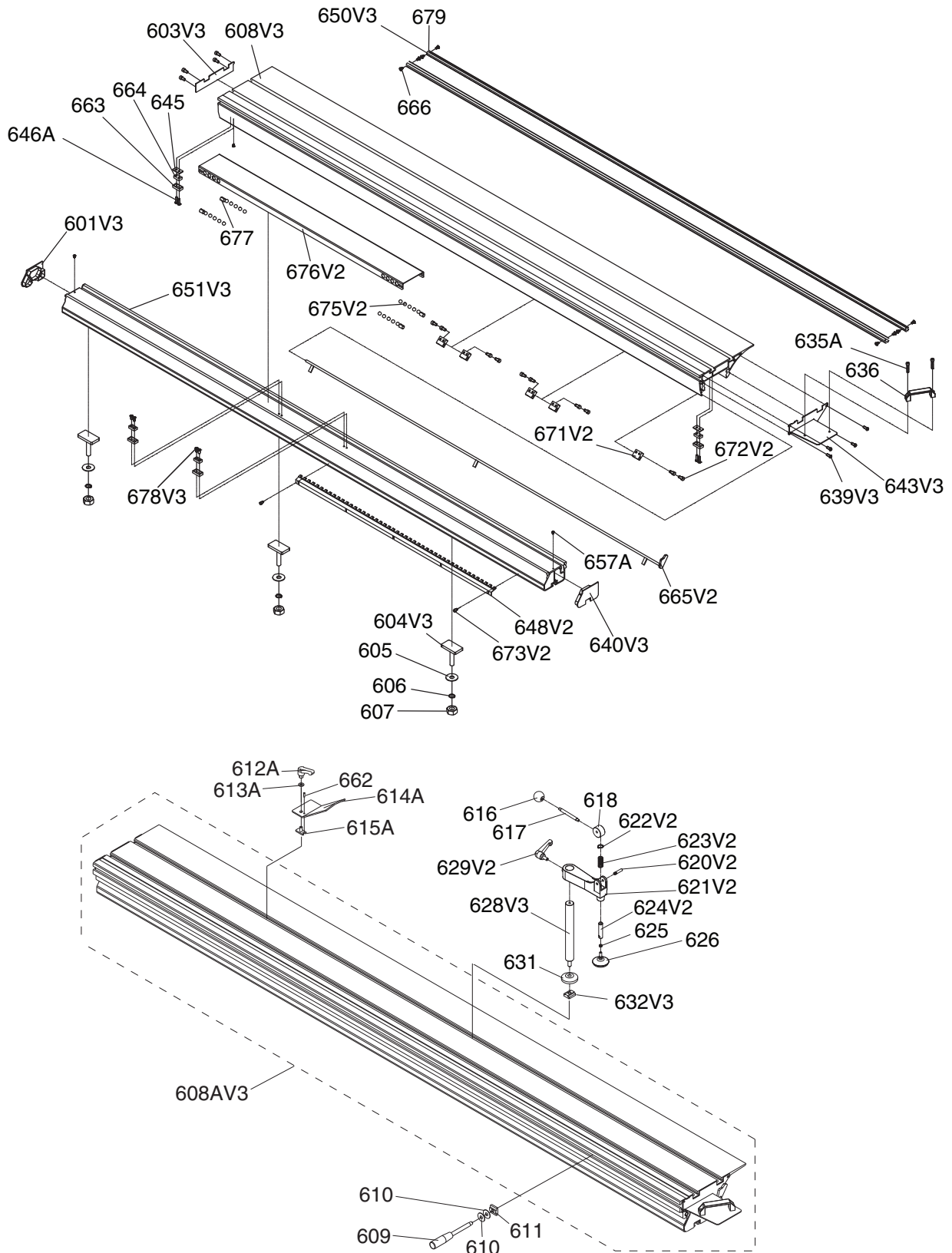


REF	PART #	DESCRIPTION
501	P04510501	BLADE GUARD
502	PWF08M	FENDER WASHER 8MM
503	PBHS07M	BUTTON HD CAP SCR M8-1.25 X 40
504	PB35M	HEX BOLT M12-1.75 X 40
505	P04510505	ARBOR BRACKET
506	P04510506	RIVING KNIFE
507	P04510507	RIVING KNIFE FLAT WASHER 12MM
508	PLW05M	LOCK WASHER 12MM
509	PN09M	HEX NUT M12-1.75
510	P04510510	LOCATING PIN
511	P04510511	FIX BLOCK
512	PBHS23M	BUTTON HD CAP SCR M8-1.25 X 25
513	PN21M	HEX NUT M16-2 LH
514A	P04510514A	ARBOR FLANGE V2.06.07
515	PWF08M	FENDER WASHER 8MM
516	P04510516	BUSHING
517	P04510517	HOSE CLAMP 2-1/2"
519	PBHS23M	BUTTON HD CAP SCR M8-1.25 X 25
520	PWF08M	FENDER WASHER 8MM
521	P04510521	BUSHING

REF	PART #	DESCRIPTION
522	P04510522	LINK PLATE
523	P4185072	KEY 8 X 7 X 35
524A	P04510524A	MAIN ARBOR 1" V2.06.07
525	P6206-2RS	BALL BEARING 6206 2RS
526A	P04510526A	MAIN HOUSING V2.06.07
527	PSS06M	SET SCREW M8-1.25 X 16
528A	P04510528A	BUSHING V2.06.07
529	P6206-2RS	BALL BEARING 6206 2RS
530	P04510530	LOCATE RING
531A	P04510531A	ARBOR PULLEY V2.06.07
532	PWF08M	FENDER WASHER 8MM
533	PLW04M	LOCK WASHER 8MM
534	PCAP31M	CAP SCREW M8-1.25 X 25
535	PSS11M	SET SCREW M6-1 X 16
536	PBHS08M	BUTTON HD CAP SCR M10-1.5 X 35
537	PLW06M	LOCK WASHER 10MM
538	P04510538	COVER
539	PCAP164M	CAP SCREW M3-.5 X 12
540	P04510540	PLATE



Sliding Table



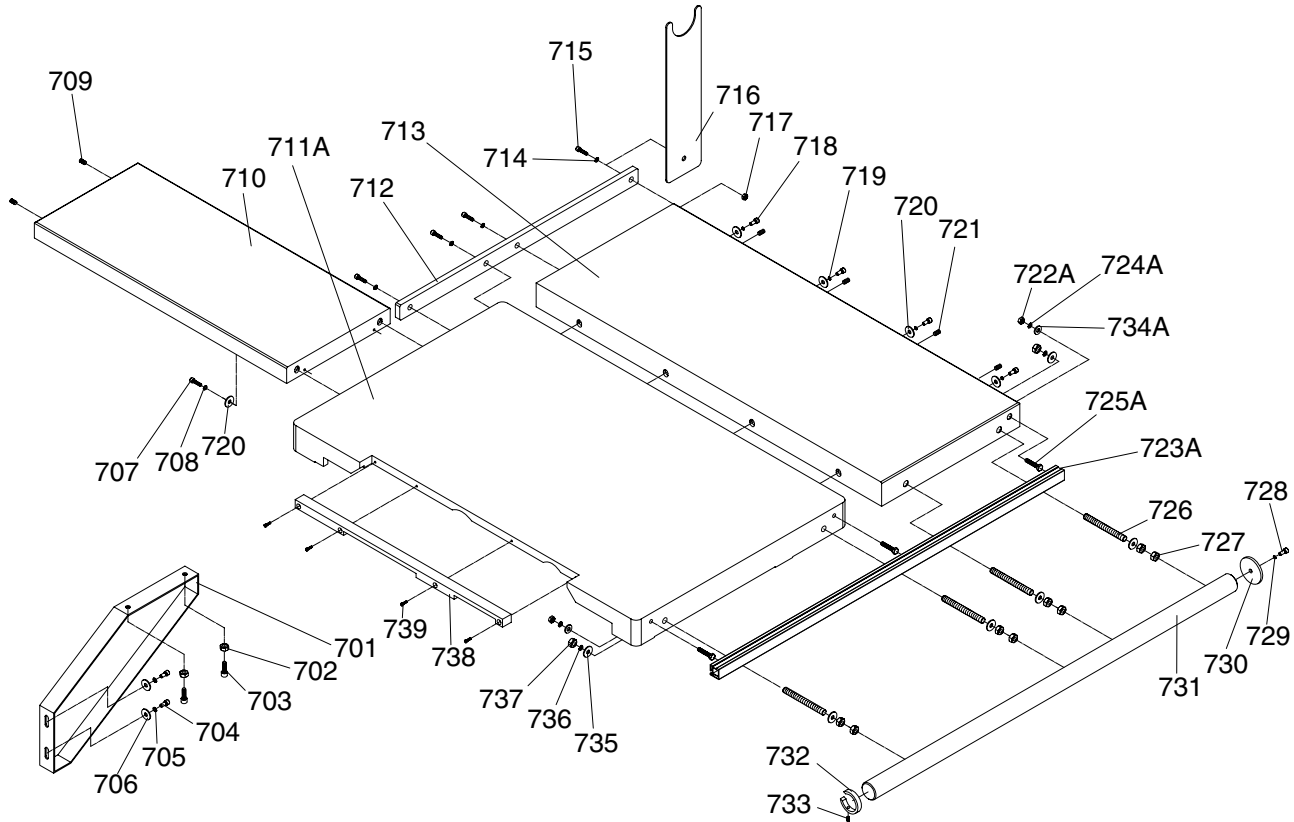
Sliding Table Parts List

REF	PART #	DESCRIPTION
601V3	P04510601V3	BASE END COVER V3.05.10
603V3	P04510603V3	TABLE END COVER V3.05.10
604V3	P04510604V3	T-BOLT M12-1.75 X 40 V3.05.10
605	PW06M	FLAT WASHER 12MM
606	PLW05M	LOCK WASHER 12MM
607	PN09M	HEX NUT M12-1.75
608AV3	P04510608AV3	SLIDING TABLE ASSY V3.05.10
608V3	P04510608V3	TOP BASE 2500MM V3.05.10
609	P04510609	HANDLE M12-1.75
610	PW06M	FLAT WASHER 12MM
611	P04510215	T-NUT M12-1.75
612A	P04510612A	LOCK HANDLE M10-1.5 X 20 V2.08.07
613A	PW04M	FLAT WASHER 10MM
614A	P04510614A	EDGE SHOE PLATE V2.08.07
615A	P04510615A	T-NUT M10-1.5 V2.08.07
616	P04510616	BALL KNOB M8-1.25
617	P04510617	HANDLE SHAFT
618	P04510618	CAM
620V2	P04510620V2	PIN V2.05.10
621V2	P04510621V2	ELBOW BLOCK V2.05.10
622V2	PR02M	EXT RETAINING RING 14MM
623V2	P04510623V2	COMPRESSION SPRING V2.05.10
624V2	P04510624V2	SHAFT V2.05.10
625	PN02	HEX NUT 5/16-18
626	P04510626	CLAMP FOOT
628V3	P04510628V3	SHAFT V3.05.10
629V2	P04510629V2	ADJUST HANDLE V2.05.10

REF	PART #	DESCRIPTION
631	P04510631	SHAFT WASHER
632V3	P04510632V3	T-NUT M12-1.75 V3.05.10
635A	PCAP58M	CAP SCREW M8-1.25 X 12
636	P04510636	HANDLE
639V3	PBHS09M	BUTTON HD CAP SCR M6-1 X 12
640V3	P04510640V3	RIGHT END PLATE V3.05.10
643V3	P04510643V3	BASE END COVER V3.05.10
645	P04510645	HORIZONTAL LOCATE PLATE
646A	PFH26M	FLAT HD SCR M6-1 X 30
648V2	P04510648V2	TEETH LOCATE PLATE V2.05.10
650V3	P04510650V3	STEEL RAIL V3.05.10
651V3	P04510651V3	BOTTOM BASE 2500MM V3.05.10
657A	PHTEK19M	TAP SCREW M5 X 16
662	PRP70M	ROLL PIN 5 X 18
663	P04510663	RUBBER BLOCK
664	P04510664	LOCATE BLOCK
665V2	P04510665V2	LOCATE ROD V2.05.10
666	PFH43M	FLAT HD SCR M6-1 X 10
671V2	P04510671V2	LOCATE BLOCK V2.05.10
672V2	PFH07M	FLAT HD SCR M5-.8 X 10
673V2	PCAP115M	BUTTON HD CAP SCR M6-1 X 16
675V2	P04510675V2	STEEL BALL 16.6MM V2.05.10
676V2	P04510676V2	SLIDING BOTTOM V2.05.10
677	P04510677	COTTON PAD
678V3	PBHS05M	BUTTON HD CAP SCR M6-1 X 20
679	P04510679	ADHESIVE



Tables

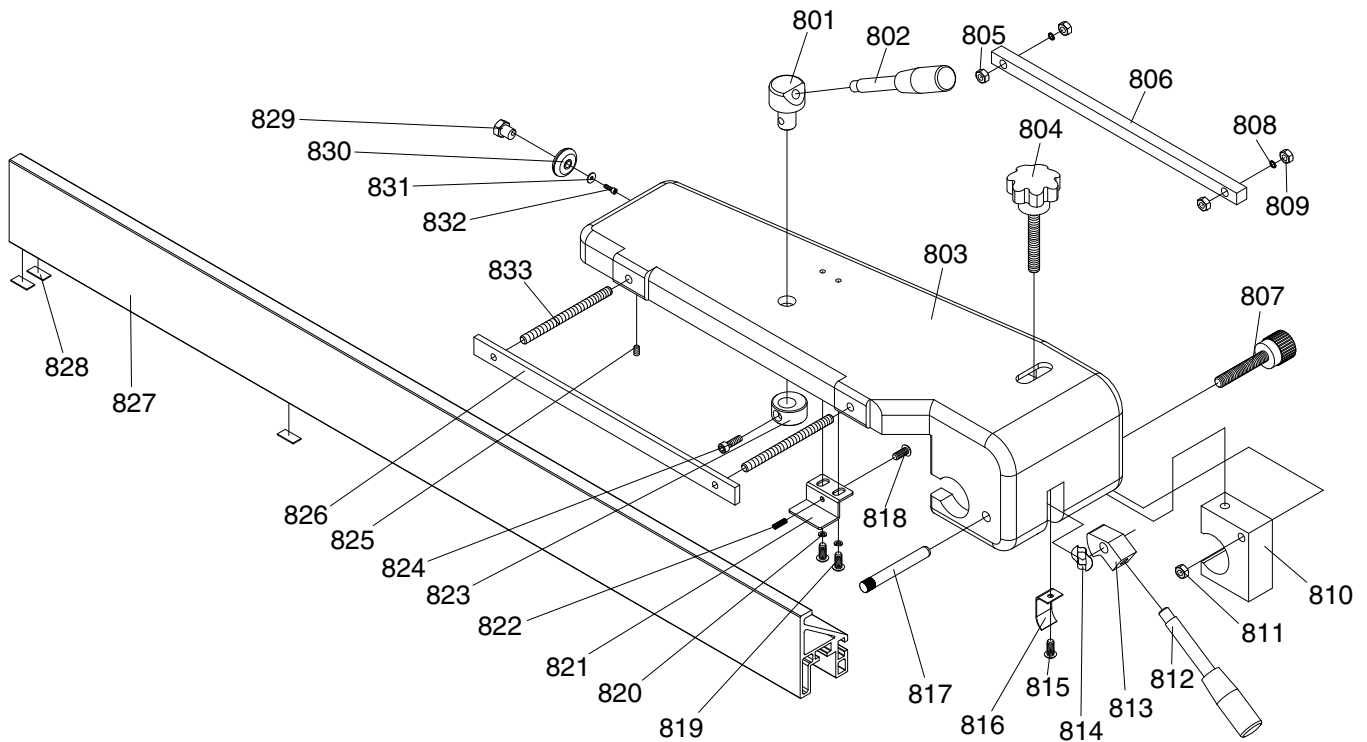


REF	PART #	DESCRIPTION
701	P04510701	SUPPORT BRACE
702	PN03M	HEX NUT M8-1.25
703	PCAP14M	CAP SCREW M8-1.25 X 20
704	PCAP14M	CAP SCREW M8-1.25 X 20
705	PLW04M	LOCK WASHER 8MM
706	PWF08M	FENDER WASHER 8MM
707	PB56M	CAP SCREW M10-1.5 X 20
708	PLW06M	LOCK WASHER 10MM
709	PSS04M	SET SCREW M6-1 X 12
710	P04510710	OUTFEED EXTENSION TABLE
711A	P04510711A	TABLE V2.09.05
712	P04510712	SUPPORT PLATE LEFT
713	P04510713	EXTENSION TABLE
714	PLW06M	LOCK WASHER 10MM
715	PCAP72M	CAP SCREW M10-1.5 X 30
716	P04510716	HOSE SUPPORT PLATE
717	PN02M	HEX NUT M10-1.5
718	PB56M	CAP SCREW M10-1.5 X 20
719	PLW06M	LOCK WASHER 10MM
720	PW04M	FLAT WASHER 10MM

REF	PART #	DESCRIPTION
721	PSS04M	SET SCREW M6-1 X 12
722A	PN01M	HEX NUT M6-1
723A	P04510723A	SCALE BAR V2.09.05
724A	PLW03M	LOCK WASHER 6MM
725A	PB10M	HEX BOLT M6-1 X 25
726	P04510726	STUD-FT M12-1.75 X 115
727	PN09M	HEX NUT M12-1.75
728	PCAP11M	CAP SCREW M8-1.25 X 16
729	PLW04M	LOCK WASHER 8MM
730	P04510730	END WASHER
731	P04510731	ROUND RAIL
732	P04510732	RING STOP
733	PSS01M	SET SCREW M6-1 X 10
734A	PW03M	FLAT WASHER 6MM
735	PW06M	FLAT WASHER 12MM
736	PLW05M	LOCK WASHER 12MM
737	PN09M	HEX NUT M12-1.75
738	P04510738	TABLE INSERT
739	PCAP38M	CAP SCREW M5-.8 X 25



Rip Fence

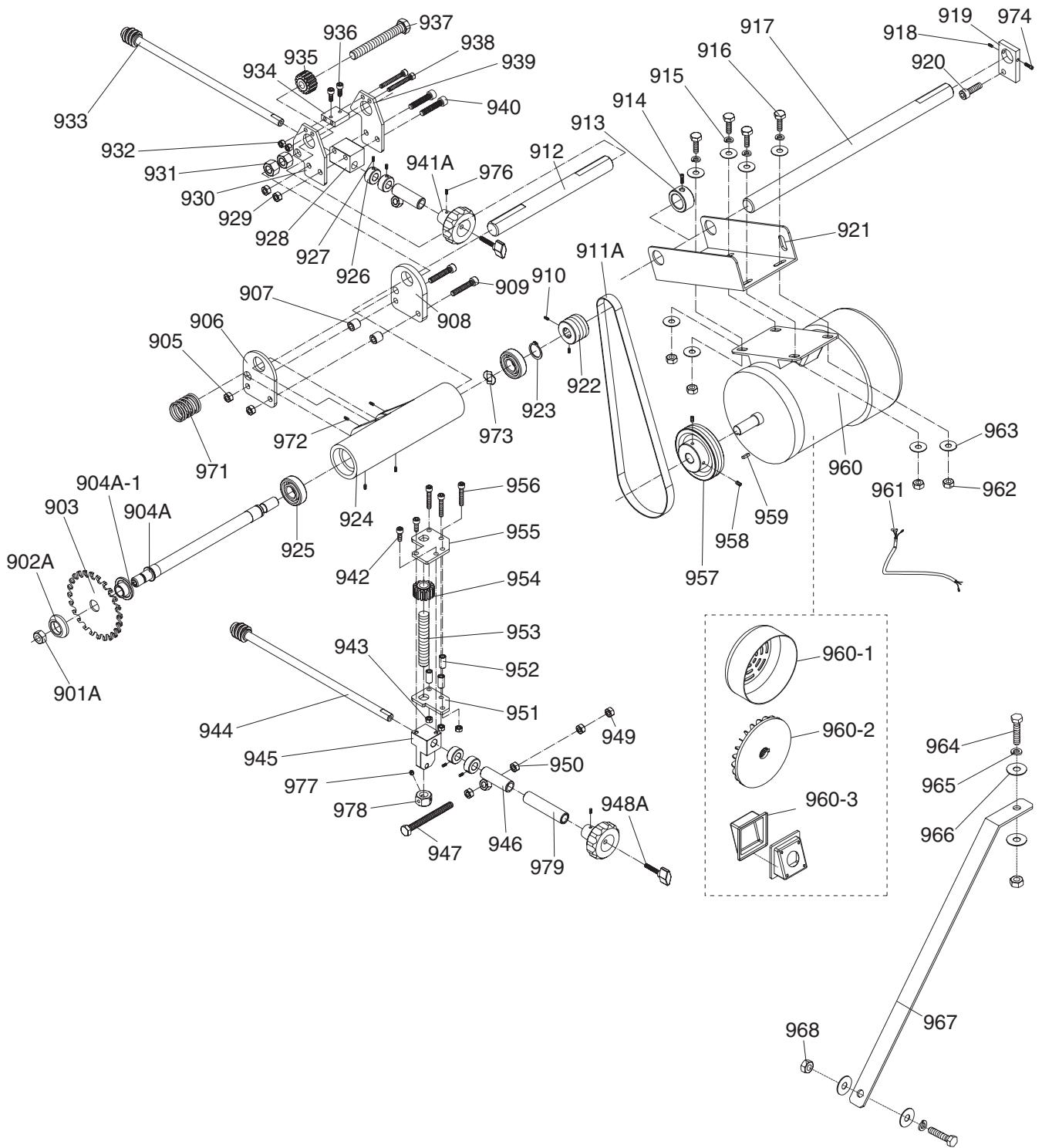


REF	PART #	DESCRIPTION
801	P04510801	ROTATE SHAFT
802	P04510802	HANDLE M10-1.5 X 12
803	P04510803	RIP FENCE HOUSING
804	P04510804	KNOB M10-1.5 X 70
805	PN03M	HEX NUT M8-1.25
806	P04510806	LOCATE PLATE
807	P04510807	MICRO ADJUSTING KNOB
808	PLW04M	LOCK WASHER 8MM
809	PN03M	HEX NUT M8-1.25
810	P04510810	LOCATE BLOCK
811	PLN05M	LOCK NUT M10-1.5
812	P04510802	HANDLE M10-1.5 X 12
813	P04510813	CAM
814	P04510814	WAVE WASHER 10 X 15
815	PFS12M	FLANGE SCREW M5-.8 X 12
816	P04510816	SPRING PIECE
817	P04510817	PIN

REF	PART #	DESCRIPTION
818	PCAP115M	BUTTON HD CAP SCR M6-1 X 16
819	PBHS09M	BUTTON HD CAP SCR M6-1 X 12
820	PW03M	FLAT WASHER 6MM
821	P04510821	PLATE
822	P04510822	COMPRESSION SPRING
823	P04510823	CAM
824	PCAP11M	CAP SCREW M8-1.25 X 16
825	PSS05M	SET SCREW M5-.8 X 10
826	P04510826	CLAMP PLATE
827	P04510827	FENCE PLATE
828	P04510828	BEARING PAD
829	P04510829	ECCENTRIC SHAFT
830	P04510830	PLASTIC ROLLER
831	PW03M	FLAT WASHER 6MM
832	PCAP01M	CAP SCREW M6-1 X 16
833	P04510833	STUD-FT M8-1.25 X 110



Scoring Motor



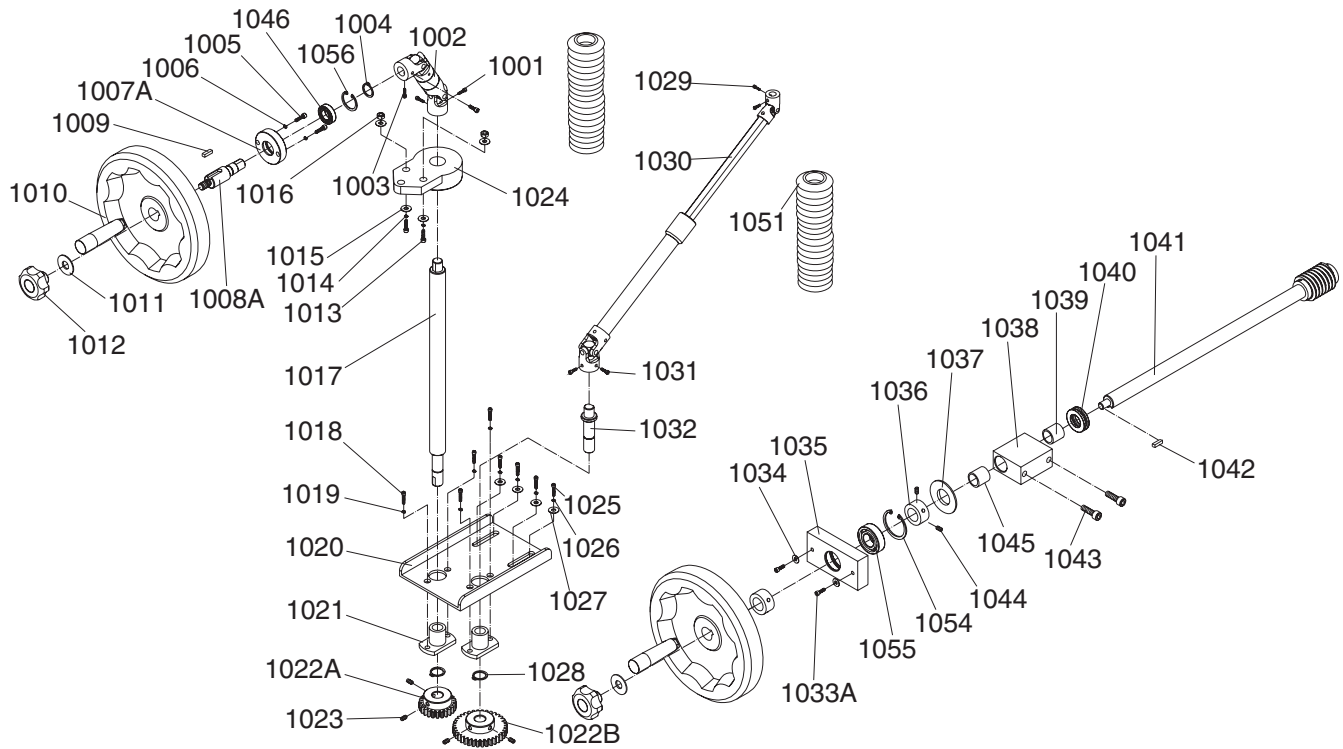
Scoring Motor Parts List

REF	PART #	DESCRIPTION
901A	PN13M	HEX NUT M16-2
902A	P04510902A	OUTER SCORING FLANGE V2.08.07
903	P04510903	SCORING BLADE 22MM
904A	P04510904A	SCORING ARBOR 22MM V2.08.07
904A-1	P04510904A-1	INNER SCORING FLANGE
905	PLN04M	LOCK NUT M8-1.25
906	P04510906	FIX PLATE
907	P04510907	BUSHING
908	P04510908	FIX PLATE
909	PCAP12M	CAP SCREW M8-1.25 X 40
910	PSS01M	SET SCREW M6-1 X 10
911A	P04510911A	FLAT BELT 15 X 800 V2.08.07
912	P04510912	SHAFT
913	P04510913	COLLAR
914	PCAP04M	CAP SCREW M6-1 X 10
915	PLW04M	LOCK WASHER 8MM
916	PB07M	HEX BOLT M8-1.25 X 25
917	P04510917	SHAFT
918	PSS01M	SET SCREW M6-1 X 10
919	P04510919	LOCATE PLATE
920	PCAP130M	CAP SCREW M10-1.5 X 16
921	P04510921	MOTOR PLATE
922	P04510922	SCORING ARBOR PULLEY
923	PR09M	EXT RETAINING RING 20MM
924	P04510924	SCORING HOUSING
925	P6204ZZ	BALL BEARING 6204ZZ
926	P04510926	COLLAR
927	PSS02M	SET SCREW M6-1 X 6
928	P04510928	FIX BLOCK
929	PLN04M	LOCK NUT M8-1.25
930	P04510930	FIX PLATE
931	PN32M	HEX NUT M14-2
932	PLN03M	LOCK NUT M6-1
933	P04510933	ADJUST SHAFT
934	P04510934	FIX BLOCK
935	P04510935	GEAR 15T
936	PCAP01M	CAP SCREW M6-1 X 16
937	PB100M	HEX BOLT M14-2 X 100
938	PCAP37M	CAP SCREW M6-1 X 50
939	P04510939	FIX PLATE

REF	PART #	DESCRIPTION
940	PCAP60M	CAP SCREW M8-1.25 X 55
941A	P04510941A	ADJUST KNOB V2.08.07
942	PCAP01M	CAP SCREW M6-1 X 16
943	PLN03M	LOCK NUT M6-1
944	P04510944	ADJUST SHAFT
945	P04510945	FIX BRACKET
946	P04510946	SLEEVE
947	PB45M	HEX BOLT M8-1.25 X 100
948A	P04510948A	KNOB M6-1 X 40 V2.08.07
949	PLN04M	LOCK NUT M8-1.25
950	PN03M	HEX NUT M8-1.25
951	P04510951	FIX PLATE
952	P04510952	BUSHING
953	P04510953	LEADSCREW 5/8-16 X 4"
954	P04510935	GEAR 15T
955	P04510955	FIX PLATE
956	PCAP29M	CAP SCREW M6-1 X 40
957	P04510957	MOTOR PULLEY
958	PSS01M	SET SCREW M6-1 X 10
959	PK23M	KEY 5 X 5 X 25
960	P04510960	SCORING MOTOR 1HP 220/440V 3PH
960-1	P04510960-1	FAN COVER
960-2	P04510960-2	MOTOR FAN
960-3	P04510960-3	MOTOR WIRING BOX
961	P04510961	SCORING MOTOR CORD
962	PN03M	HEX NUT M8-1.25
963	PWF08M	FENDER WASHER 8MM
964	PB01M	HEX BOLT M10-1.5 X 30
965	PLW06M	LOCK WASHER 10MM
966	PW04M	FLAT WASHER 10MM
967	P04510967	FIX PLATE
968	PN02M	HEX NUT M10-1.5
971	P04510971	COMPRESSION SPRING
972	PSS04M	SET SCREW M6-1 X 12
973	P04510973	WAVY WASHER 34 X 47
974	PCAP04M	CAP SCREW M6-1 X 10
976	PSS05M	SET SCREW M5-8 X 10
977	PSS02M	SET SCREW M6-1 X 6
978	P04510978	LOCK COLLAR
979	P04510979	LONG SLEEVE



Adjustment Wheels

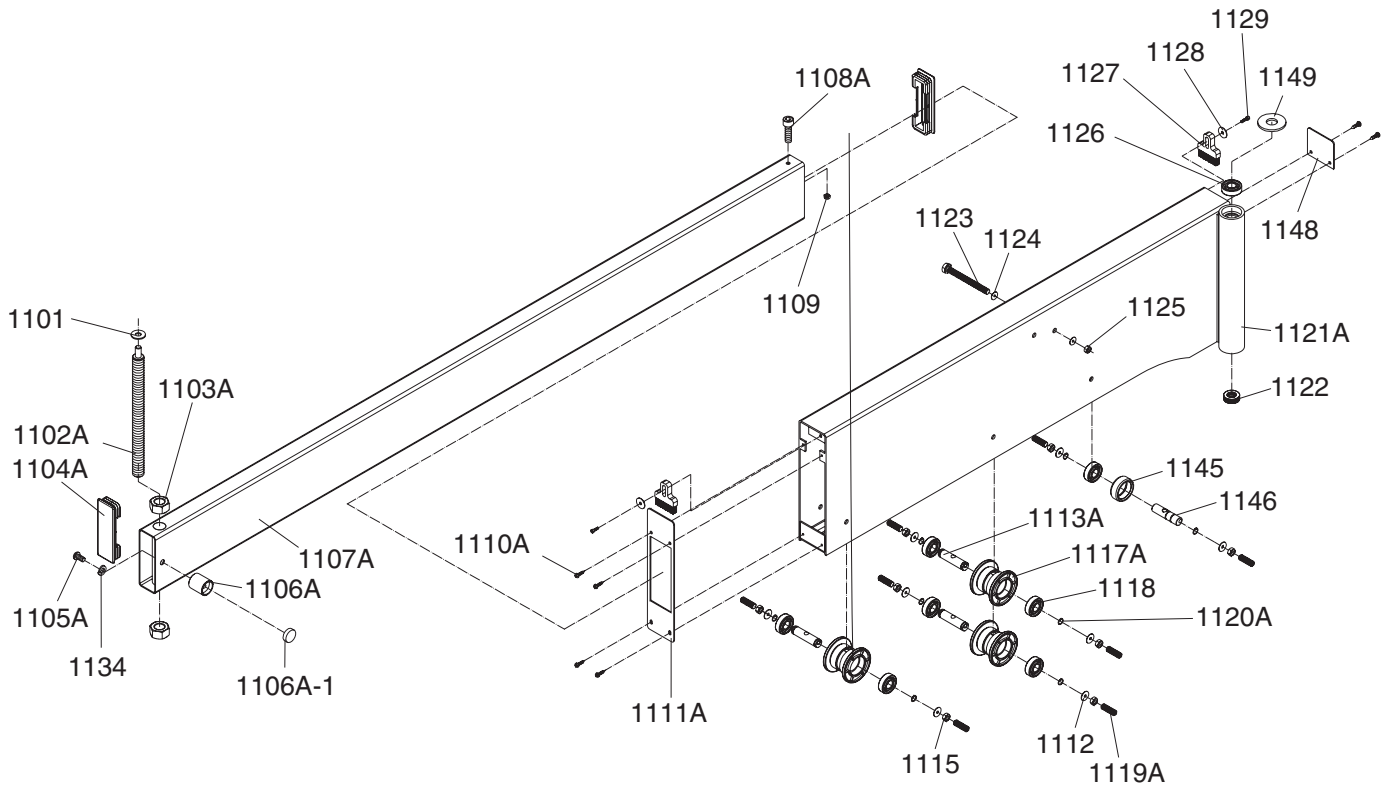


REF	PART #	DESCRIPTION
1001	PCAP26M	CAP SCREW M6-1 X 12
1002	P04511002	UNIVERSAL JOINT
1003	PCAP04M	CAP SCREW M6-1 X 10
1004	PR05M	EXT RETAINING RING 15MM
1005	PCAP11M	CAP SCREW M8-1.25 X 16
1006	PLW04M	LOCK WASHER 8MM
1007A	P04511007A	LOCATE RING V2.04.06
1008A	P04511008A	HANDWHEEL SHAFT V2.03.07
1009	PK25M	KEY 7 X 7 X 20
1010	P04511010	HANDWHEEL 8"
1011	PW04M	FLAT WASHER 10MM
1012	P04511012	KNOB M10-1.5
1013	PCAP40M	CAP SCREW M8-1.25 X 35
1014	PLW04M	LOCK WASHER 8MM
1015	PWF08M	FENDER WASHER 8MM
1016	PLN04M	LOCK NUT M8-1.25
1017	P04511017	LONG SHAFT
1018	PCAP58M	CAP SCREW M8-1.25 X 12
1019	PLW04M	LOCK WASHER 8MM
1020	P04511020	LOCATE PLATE
1021	P04511021	BEARING SET
1022A	P04511022A	GEAR 24T V2.07.05
1022B	P04511022B	GEAR 36T V2.07.05
1023	PSS01M	SET SCREW M6-1 X 10
1024	P04511024	UNIVERSAL JOINT BRACKET
1025	PCAP14M	CAP SCREW M8-1.25 X 20

REF	PART #	DESCRIPTION
1026	PLW04M	LOCK WASHER 8MM
1027	PWF08M	FENDER WASHER 8MM
1028	PR05M	EXT RETAINING RING 15MM
1029	PCAP50M	CAP SCREW M5-.8 X 10
1030	P04511030	CONNECTING ROD ASSEMBLY
1031	PCAP04M	CAP SCREW M6-1 X 10
1032	P04511032	SHAFT
1034	PW03M	FLAT WASHER 6MM
1033A	PCAP02M	CAP SCREW M6-1 X 20
1035	P04511035	SUPPORT PLATE
1036	P04511036	LOCK COLLAR
1037	P04511037	THRUST BEARING LFW-2015
1038	P04511038	LOCATE BLOCK
1039	P04511039	BUSHING
1040	P51104	THRUST BEARING 51104
1041	P04511041	WORM SHAFT
1042	PK25M	KEY 7 X 7 X 20
1043	PCAP84M	CAP SCREW M10-1.5 X 35
1044	PSS01M	SET SCREW M6-1 X 10
1045	P04511045	BUSHING
1046	P6902ZZ	BALL BEARING 6902 ZZ
1051	P04511051	EXPANSION JOINT
1054	PR24M	INT RETAINING RING 42MM
1055	P6004ZZ	BALL BEARING 6004 ZZ
1056	PR20M	INT RETAINING RING 28MM



Swing Arm

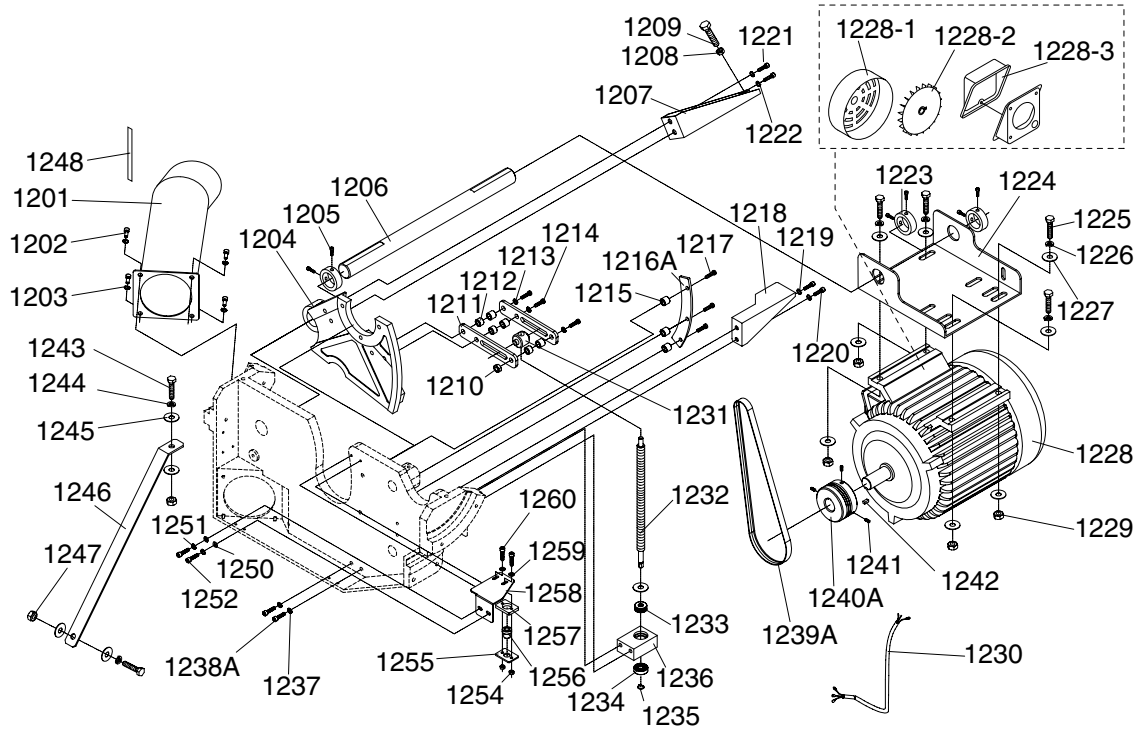


REF	PART #	DESCRIPTION
1101	P04511101	NYLON WASHER M10 X 25
1102A	P04511102A	SUPPORT SHAFT V2.01.08
1103A	PN28M	HEX NUT M20-2.5
1104A	P04511104A	PLUG 40 X 120 V2.06.07
1105A	PBHS03M	BUTTON HD CAP SCR M8-1.25 X 16
1106A	P04511106A	MAGNETIC BRACKET V2.04.07
1106A-1	P04511106A-1	MAGNET V2.06.07
1107A	P04511107A	SLIDING TUBE V2.06.07
1108A	PCAP11M	CAP SCREW M8-1.25 X 16
1109	PN03M	HEX NUT M8-1.25
1110A	PFS04M	FLANGE SCREW M4-.7 X 6
1111A	P04511111A	COVER V2.06.07
1112	PW01M	FLAT WASHER 8MM
1113A	P04511113A	SHAFT V2.06.06
1115	PN03M	HEX NUT M8-1.25
1117A	P04511117A	ROLLER V2.11.06
1118	P6202ZZ	BALL BEARING 6202ZZ

REF	PART #	DESCRIPTION
1119A	PSS21M	SET SCREW M8-1.25 X 25
1120A	PR05M	EXT RETAINING RING 15MM
1121A	P04511121A	SWING ARM V2.10.06
1122	P51102	THRUST BEARING 51102
1123	PB82M	HEX BOLT M8-1.25 X 80
1124	PW01M	FLAT WASHER 8MM
1125	PLN04M	LOCK NUT M8-1.25
1126	P6202ZZ	BALL BEARING 6202ZZ
1127	P04511127	BRUSH
1128	PW03M	FLAT WASHER 6MM
1129	PCAP02M	CAP SCREW M6-1 X 20
1134	PLW04M	LOCK WASHER 8MM
1145	P04511145	RING
1146	P04511146	SHAFT
1148	P04511148	PLATE
1149	PW08M	FLAT WASHER 16MM



Main Motor Parts

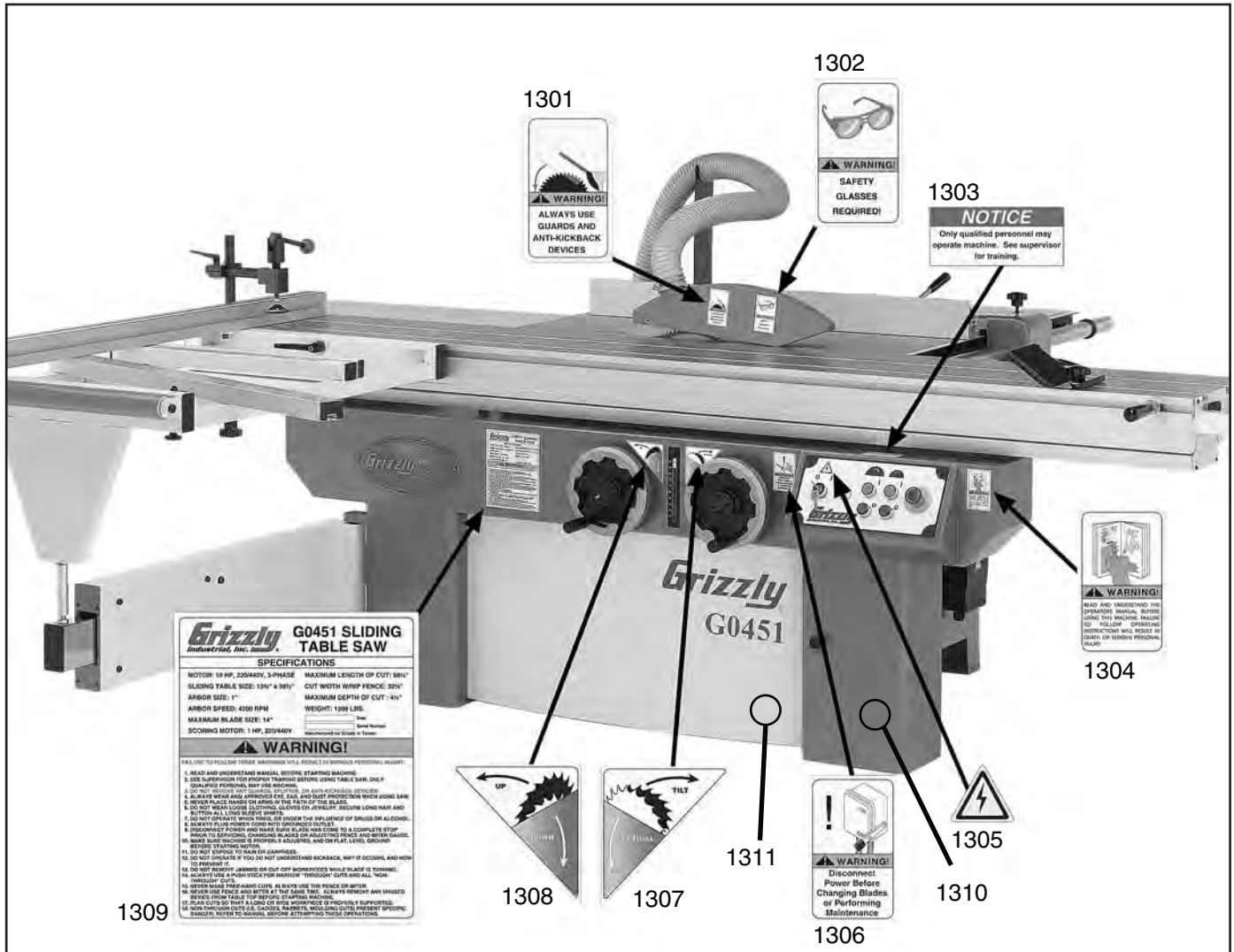


REF	PART #	DESCRIPTION
1201	P04511201	DUST PORT
1202	PCAP52M	CAP SCREW M8-1.25 X 10
1203	PLW04M	LOCK WASHER 8MM
1204	P04511204	ROTATE PLATE
1205	PSS01M	SET SCREW M6-1 X 10
1206	P04511206	SHAFT
1207	P04511207	LOCATE PLATE
1208	PN09M	HEX NUT M12-1.75
1209	PB33M	HEX BOLT M12-1.75 X 50
1210	PN02M	HEX NUT M10-1.5
1211	P04511211	SUPPORT PLATE
1212	P04511212	SPACER
1213	PLW06M	LOCK WASHER 10MM
1214	PCAP134M	CAP SCREW M10-1.5 X 65
1215	P04511215	SPACER
1216A	P04511216A	GIB PLATE V2.10.05
1217	PBHS10M	BUTTON HD CAP SCR M10-1.5 X 25
1218	P04511218	LOCATE PLATE
1219	PLW04M	LOCK WASHER 8MM
1220	PCAP11M	CAP SCREW M8-1.25 X 16
1221	PCAP130M	CAP SCREW M10-1.5 X 16
1222	PLW06M	LOCK WASHER 10MM
1223	P04511223	LOCK COLLAR
1224	P04511224	MAIN MOTOR PLATE
1225	PB31M	HEX BOLT M10-1.5 X 40
1226	PLW06M	LOCK WASHER 10MM
1227	PW04M	FLAT WASHER 10MM
1228	P04511228	MAIN MOTOR 10HP 220/440V 3PH
1228-1	P04511228-1	FAN COVER
1228-2	P04511228-2	MOTOR FAN
1228-3	P04511228-3	MOTOR WIRING BOX

REF	PART #	DESCRIPTION
1229	PN02M	HEX NUT M10-1.5
1230	P04511230	MAIN MOTOR CORD
1231	P04511231	LOCK COLLAR
1232	P04511232	ELEVATION SCREW M16-2 X 335
1233	P51200	THRUST BEARING 51200
1234	P6200ZZ	BALL BEARING 6200ZZ
1235	PR01M	EXT RETAINING RING 10MM
1236	P04511236	FIX BLOCK
1237	PLW06M	LOCK WASHER 10MM
1238A	PCAP84M	CAP SCREW M10-1.5 X 35
1239A	P04511239A	BELT 3R-5MS-670 V2.06.07
1240A	P04511240A	MAIN MOTOR PULLEY V2.06.07
1241	PSS01M	SET SCREW M6-1 X 10
1242	PK118M	KEY 8 X 7 X 50
1243	PB01M	HEX BOLT M10-1.5 X 30
1244	PLW06M	LOCK WASHER 10MM
1245	PW04M	FLAT WASHER 10MM
1246	P04511246	FIX PLATE
1247	PN02M	HEX NUT M10-1.5
1248	P04511248	SPONGE
1250	PW03M	FLAT WASHER 6MM
1251	PLW03M	LOCK WASHER 6MM
1252	PCAP02M	CAP SCREW M6-1 X 20
1254	PLN02M	LOCK NUT M5-.8
1255	P04511255	FIX PLATE
1256	P04511256	BUSHING
1257	P04511257	PLATE
1258	P04511258	FIX PLATE
1259	PW02M	FLAT WASHER 5MM
1260	PCAP38M	CAP SCREW M5-.8 X 25



Machine Labels A



REF	PART #	DESCRIPTION
1301	PLABEL-40	BLADE GUARD LABEL
1302	PLABEL-11A	SAFETY GLASSES LABEL VL
1303	P04511303	QUALIFIED PERSONNEL LABEL
1304	PLABEL-12A	READ MANUAL LABEL VL
1305	PLABEL-14A	ELECTRICITY LABEL
1306	PLABEL-53	DISCONNECT LABEL VL

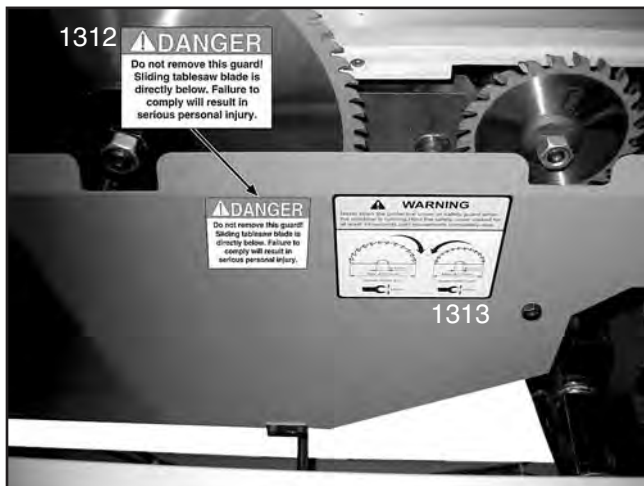
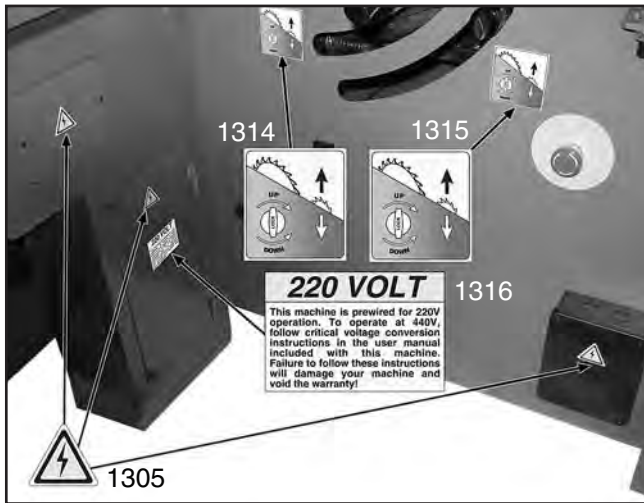
REF	PART #	DESCRIPTION
1307	P04511307	TILT DIRECTION LABEL
1308	P04511308	ELEVATION DIRECTION LABEL
1309	P04511309	MACHINE ID LABEL
1310	PPAINT-1	GRIZZLY GREEN TOUCH-UP PAINT
1311	PPAINT-11	GRIZZLY PUTTY TOUCH-UP PAINT

WARNING

Safety labels help reduce the risk of serious injury caused by machine hazards. If any label comes off or becomes unreadable, the owner of this machine **MUST** replace it in the original location before resuming operations. For replacements, contact (800) 523-4777 or www.grizzly.com.



Machine Labels B



REF	PART #	DESCRIPTION
1312	P04511312	DO NOT REMOVE GUARD LABEL
1313	P04511313	BLADE ROTATION DIRECTION LABEL
1314	P04511314	SCORING BLADE ELEVATION LABEL
1315	P04511315	SCORING BLADE ALIGNMENT LABEL

REF	PART #	DESCRIPTION
1316	P04511316	220V LABEL
1317	P04511317	FENCE LOCK DIRECTION
1318	P04511318	KICKBACK WARNING LABEL

