

Grizzly *Industrial, Inc.*®

MODEL G8703–G8708

CHAIN HOIST

OWNER'S MANUAL



COPYRIGHT © JULY, 1999 BY GRIZZLY INDUSTRIAL, INC., REVISED JULY, 2010 (TS)
**WARNING: NO PORTION OF THIS MANUAL MAY BE REPRODUCED IN ANY SHAPE
OR FORM WITHOUT THE WRITTEN APPROVAL OF GRIZZLY INDUSTRIAL, INC.**

#TS0381 PRINTED IN CHINA

 **WARNING!**

This manual provides critical safety instructions on the proper setup, operation, maintenance and service of this machine/equipment.

Failure to read, understand and follow the instructions given in this manual may result in serious personal injury, including amputation, electrocution or death.

The owner of this machine/equipment is solely responsible for its safe use. This responsibility includes but is not limited to proper installation in a safe environment, personnel training and usage authorization, proper inspection and maintenance, manual availability and comprehension, application of safety devices, blade/cutter integrity, and the usage of personal protective equipment.

The manufacturer will not be held liable for injury or property damage from negligence, improper training, machine modifications or misuse.

 **WARNING!**

Some dust created by power sanding, sawing, grinding, drilling, and other construction activities contains chemicals known to the State of California to cause cancer, birth defects or other reproductive harm. Some examples of these chemicals are:

- **Lead from lead-based paints.**
- **Crystalline silica from bricks, cement and other masonry products.**
- **Arsenic and chromium from chemically-treated lumber.**

Your risk from these exposures varies, depending on how often you do this type of work. To reduce your exposure to these chemicals: Work in a well ventilated area, and work with approved safety equipment, such as those dust masks that are specially designed to filter out microscopic particles.

SAFETY

WARNING

For Your Own Safety Read Instruction Manual Before Operating This Equipment

The purpose of safety symbols is to attract your attention to possible hazardous conditions. This manual uses a series of symbols and signal words which are intended to convey the level of importance of the safety messages. The progression of symbols is described below. Remember that safety messages by themselves do not eliminate danger and are not a substitute for proper accident prevention measures.

DANGER

Indicates an imminently hazardous situation which, if not avoided, WILL result in death or serious injury.

WARNING

Indicates a potentially hazardous situation which, if not avoided, COULD result in death or serious injury.

CAUTION

Indicates a potentially hazardous situation which, if not avoided, MAY result in minor or moderate injury. It may also be used to alert against unsafe practices.

NOTICE

This symbol is used to alert the user to useful information about proper operation of the equipment.

WARNING

Safety Instructions for Machinery

1. **READ THROUGH THE ENTIRE MANUAL BEFORE STARTING MACHINERY.** Machinery presents serious injury hazards to untrained users.
2. **ALWAYS USE ANSI APPROVED SAFETY GLASSES WHEN OPERATING MACHINERY.** Everyday eyeglasses only have impact resistant lenses, they are NOT safety glasses.
3. **ALWAYS WEAR A NIOSH APPROVED RESPIRATOR WHEN OPERATING MACHINERY THAT PRODUCES DUST.** Wood dust is a carcinogen and can cause cancer and severe respiratory illnesses.
4. **ALWAYS USE HEARING PROTECTION WHEN OPERATING MACHINERY.** Machinery noise can cause permanent hearing damage.
5. **WEAR PROPER APPAREL.** DO NOT wear loose clothing, gloves, neckties, rings, or jewelry which may get caught in moving parts. Wear protective hair covering to contain long hair and wear non-slip footwear.
6. **NEVER OPERATE MACHINERY WHEN TIRED, OR UNDER THE INFLUENCE OF DRUGS OR ALCOHOL.** Be mentally alert at all times when running machinery.

WARNING

Safety Instructions For Machinery

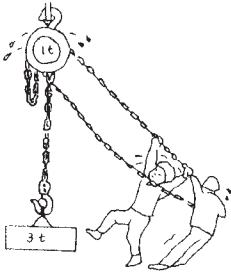
7. **ONLY ALLOW TRAINED AND PROPERLY SUPERVISED PERSONNEL TO OPERATE MACHINERY.** Make sure operation instructions are safe and clearly understood.
8. **KEEP CHILDREN AND VISITORS AWAY.** Keep all children and visitors a safe distance from the work area.
9. **MAKE WORKSHOP CHILD PROOF.** Use padlocks, master switches, and remove switch keys.
10. **NEVER LEAVE WHEN MACHINE IS RUNNING.** Turn power **OFF** and allow all moving parts to come to a complete stop before leaving machine unattended.
11. **DO NOT USE IN DANGEROUS ENVIRONMENTS.** DO NOT use machinery in damp, wet locations, or where any flammable or noxious fumes may exist.
12. **KEEP WORK AREA CLEAN AND WELL LIT.** Clutter and dark shadows may cause accidents.
13. **USE A GROUNDED EXTENSION CORD RATED FOR THE MACHINE AMPERAGE.** Undersized cords overheat and lose power. Replace extension cords if they become damaged. DO NOT use extension cords for 220V machinery.
14. **ALWAYS DISCONNECT FROM POWER SOURCE BEFORE SERVICING MACHINERY.** Make sure switch is in OFF position before reconnecting.
15. **MAINTAIN MACHINERY WITH CARE.** Keep blades sharp and clean for best and safest performance. Follow instructions for lubricating and changing accessories.
16. **MAKE SURE GUARDS ARE IN PLACE AND WORK CORRECTLY BEFORE USING MACHINERY.**
17. **REMOVE ADJUSTING KEYS AND WRENCHES.** Make a habit of checking for keys and adjusting wrenches before turning machinery **ON**.
18. **CHECK FOR DAMAGED PARTS BEFORE USING MACHINERY.** Check for binding and alignment of parts, broken parts, part mounting, loose bolts, and any other conditions that may affect machine operation. Repair or replace damaged parts.
19. **DO NOT FORCE MACHINERY.** Work at the speed for which the machine or accessory was designed.
20. **SECURE WORKPIECE.** Use clamps or a vise to hold the workpiece when practical. A secured workpiece protects your hands and frees both hands to operate the machine.
21. **DO NOT OVERREACH.** Keep proper footing and balance at all times.
22. **MANY MACHINES WILL EJECT THE WORKPIECE TOWARD THE OPERATOR.** Know and avoid conditions that cause the workpiece to "kickback."
23. **BE AWARE THAT CERTAIN WOODS MAY CAUSE AN ALLERGIC REACTION** in people and animals, especially when exposed to fine dust. Make sure you know what type of wood dust you will be exposed to and always wear an approved respirator.

WARNING

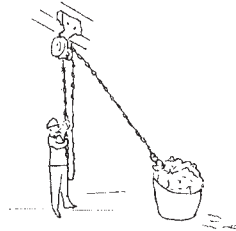
Safety Instructions For Chain Hoists

- 1. KEEP ALL SAFETY DEVICES IN PLACE** and in good working order.
- 2. LIFTING POWER.** This chain hoist is designed to be comfortable for one person to lift the load using only hand power. Never use a motor or an additional mechanical device with this chain hoist to lift the load.
- 3. SAFETY HOOKS.** Before lifting, inspect the safety hooks to make certain they are securely attached, and verify that the safety catches are operating correctly.
- 4. METAL FATIGUE.** Before using, inspect the hooks, chains, and gear-box housing to verify that the metal parts do not have cracks or other signs of potential failure.
- 5. DYNAMIC LOADING.** Swinging or jerking the load will cause dynamic loading that could exceed the capacities of the hoist, which could result in the load falling.
- 6. VERTICAL MOVEMENT.** The chain hoist is designed to only move the load straight up and straight down. Swinging or dragging the load could cause hoist failure.
- 7. CHAIN ENTANGLEMENT.** Always make sure the chains are not twisted around each other before lifting. Keep body parts, long hair, and jewelry away from the chains and hooks to prevent entanglement during lifting.
- 8. WARNING LABEL.** Always make sure the warning label on the hoist is legible so that the operator can be aware of the immediate hazards of operating the hoist. If the label becomes damaged, replace it.
- 7. CRUSHING HAZARD.** If the load should fall, it could cause death or serious personal injury to anyone underneath the hoist. Always make sure the operator and bystanders never move under the load.
- 8. OPERATION SPEED.** Use a slow and steady pace when raising or lowering the load to avoid jerking or tangling the chains and load.
- 9. HEAD PROTECTION.** Always wear a hard hat or similar head protection when using the hoist.
- 10. OPERATIONAL DIFFICULTY.** If the lifting chain seems to require excessive force to lift the load, check for the following and resolve them before continuing:
 - Is the load heavier than the rated capacity of the hoist?
 - Are the chains or load entangled in any way?
 - Is an obstacle blocking the load or chains?
 - Are the chains and load not directly under the hoist?
 - Have the gears inside the gear-box housing jammed?

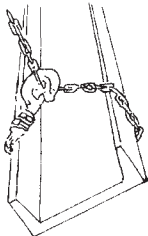
Additional Safety Precautions for Chain Hoists



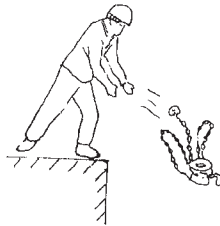
DO NOT attempt to lift a load in excess of the rated load capacity.



DO NOT drag the load or lift it when it is not directly under the chain hoist.



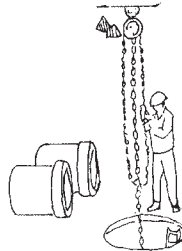
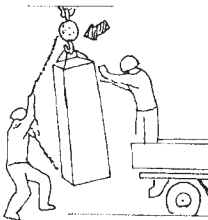
DO NOT wrap the lifting chain around the load to lift it—use a separate chain.



DO NOT mishandle the hoist assembly.



DO NOT allow the hook to become twisted around the chain.



DO NOT exceed the maximum lifting or lowering distance.

⚠️ WARNING

Read and understand this entire manual before using this hoist. Serious personal injury may occur if safety and operational information is not understood and followed. DO NOT risk your safety by not reading!

⚠️ CAUTION

Use this and other tools with caution and respect. Always consider safety first, as it applies to your individual working conditions. No list of safety guidelines can be complete for every environment. Failure to follow guidelines could result in death, serious personal injury, or damage to equipment.

INTRODUCTION

Foreword

We are proud to offer the Grizzly Model G8703–G8708 Chain Hoist. This equipment is part of a growing Grizzly family of fine tools. When used according to the guidelines set forth in this manual, you can expect years of trouble-free, enjoyable operation and proof of Grizzly's commitment to customer satisfaction.

It is our pleasure to provide this manual with the Model G8703–G8708. It was written to encourage safety considerations and guide you through general operating procedures and maintenance.

The specifications, details, and photographs in this manual represent the Model G8703–G8708 as supplied when the manual was prepared. However, owing to Grizzly's policy of continuous improvement, changes may be made at any time with no obligation on the part of Grizzly.

Contact Info

If you have any comments regarding this manual, please contact us:

Grizzly Industrial, Inc.
C/O Technical Documentation Manager
P.O. Box 2069
Bellingham, WA 98227-2069
Email: manuals@grizzly.com

Most importantly, we stand behind our tools. If you have any service questions or parts requests, please call or write us at the location listed below.

Grizzly Industrial, Inc.
1203 Lycoming Mall Circle
Muncy, PA 17756
Phone: (570) 546-9663
Fax: (800) 438-5901
E-Mail: techsupport@grizzly.com
Web Site: <http://www.grizzly.com>

Specifications

| Specification | G8703 | G8704 | G8705 | G8706 | G8707 | G8708 |
|--------------------------------|--------|----------|---------|--------|---------|--------|
| Full Load Capacity (tons) | 1/2 | 1 | 1 1/2 | 2 | 3 | 5 |
| Maximum Vertical Lift (in.) | 98 | 98 | 98 | 98 | 118 | 118 |
| Headroom (in.) | 11 | 11 13/16 | 14 3/16 | 15 | 18 1/2 | 23 3/8 |
| Force to Lift Full Load (lbs.) | 38 | 76 | 88 | 76 | 88 | 95 |
| No. of Load Chain Fall Lines | 1 | 1 | 1 | 2 | 2 | 2 |
| Gearbox Housing Diameter (in.) | 5 9/16 | 5 9/16 | 7 | 5 9/16 | 7 | 8 1/4 |
| Gearbox Housing Width (in.) | 5 | 5 | 5 9/16 | 5 | 5 9/16 | 6 1/2 |
| Maximum Hook Opening (in.) | 3/4 | 1 5/16 | 1 7/64 | 1 9/16 | 1 11/32 | 1 3/4 |
| Net Weight (lbs.) | 21 | 22 | 33 | 31 | 53 | 79 |

OPERATION

To operate the chain hoist:

1. Read and follow the safety precautions included in the front of this manual, wear protective head gear, and clear the area around the lifting operation of people, animals, and obstructions.
2. Secure the safety hook on top of the gearbox housing to a structurally sound overhead beam that is capable of supporting the load weight.

Make sure that the overhead connection point conforms to the require local and state safety and building codes for the hoist and load used.

Note: *The hoist can be mounted on a beam trolley if the capacity of the trolley system is at least twice the maximum load capacity of the hoist.*

3. Position the load directly under the chain hoist.

WARNING

Always connect the chain hoist lifting hook to a separate lifting device attached to the load, such as a strap, a chain, or an eye bolt. **DO NOT** wrap the hoist lifting chain and hook around the load in any way. If you do, the dynamic loads could exceed the capacity of the hoist, causing it to fail and drop the load. A falling load could cause death or serious crushing injuries.

4. Make sure the hoist chains are not tangled, then attach the lifting hook to the load.
 5. Pull on the lifting chain until there is slight tension between the hoist and the load.
 6. Inspect the hoist and load to make sure that the load chains will stay vertical during the lifting operation, that there is not a possibility of any type of entanglement, and that there are not obstacles in the path of the lift.
 7. While keeping to the side of the lifting path, continue to pull on the lifting chain with a slow and steady pace.
- Note:** *The hoist has a built-in braking mechanism that will suspend the load at the current position when you release the lifting chain.*
8. When you are ready to lower the load, pull on the opposite side of the lifting chain at a slow and steady pace.
 9. When the tension between the hoist and the load is completely released, detach the hoist hook.

MAINTENANCE

WARNING

Incorrect re-assembly of this chain hoist could result in the failure of the braking mechanism. Loads may not stay suspended and could cause death or serious crushing injuries if they fall. All service or repair to the hoist MUST be performed by a qualified hoist service technician who is familiar with this hoist.

- Clean away any dirt or debris from the chains and gearbox housing. This will ensure that foreign material does not interfere with the operation of the brake and gear mechanisms.
- Periodically, apply general purpose gear grease to the gears inside the housing. They can be accessed through the bottom opening in the housing.

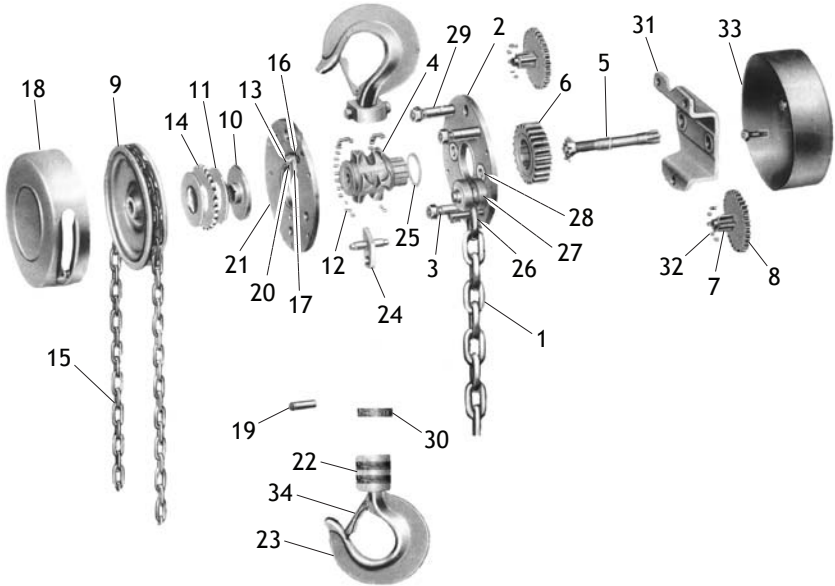
- Disassembly of the gearbox housing should not be required. However, if it becomes necessary, all service and repair procedures MUST be performed by a qualified service technician who is familiar with the brake and gear mechanisms of the hoist.
- If the hoist is disassembled for service or repair, check the operation of the re-assembled hoist with a very light load to make sure the brake and gear mechanisms are working correctly before placing the hoist into full operation.

WARNING

If lubrication of any kind gets on the parts of the braking mechanism, the hoist could fail to suspend the load, which could result in death, serious personal injury, or property damage. DO NOT allow any lubrication to get on the parts of the braking mechanism!

PARTS

G8703



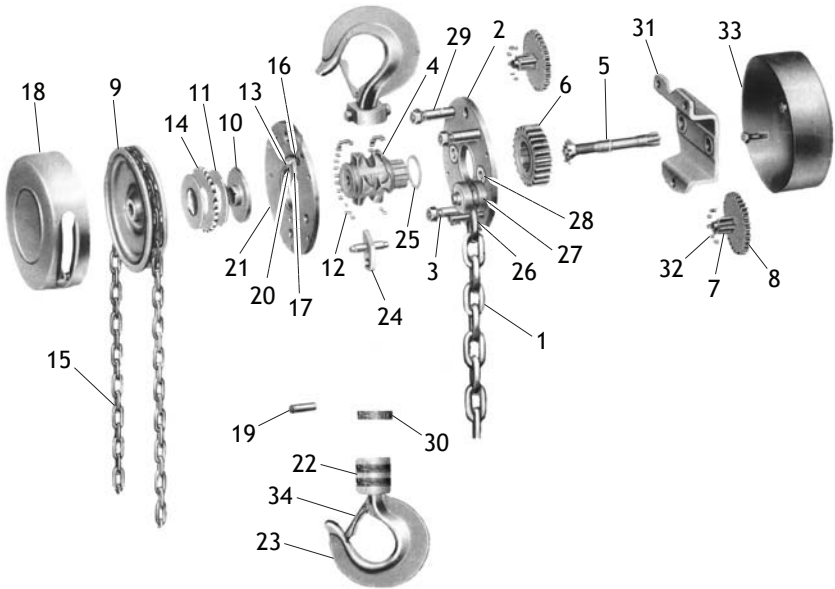
| REF PART # | DESCRIPTION |
|------------|---------------------------------|
| 1 | P8703001 LOAD CHAIN G80 |
| 2 | P8703002 RIGHT SIDE PLATE |
| 3 | P8703003 SHORT STAY |
| 4 | P8703004 LOAD CHAIN SPROCKET |
| 5 | P8703005 DRIVE SHAFT |
| 6 | P8703006 SPLINED GEAR |
| 7 | P8703007 PINION SHAFT |
| 8 | P8703008 DISK GEAR |
| 9 | P8703009 LIFTING CHAIN SPROCKET |
| 10 | P8703010 BRAKE SEAT |
| 11 | P8703011 FRICTION PLATE |
| 12 | P8703012 ROLLER |
| 13 | P8703013 BEARING RACE |
| 14 | P8703014 RATCHET DISC |
| 15 | P8703015 LIFTING CHAIN |
| 16 | P8703016 PAWL SPRING .8 X 10.2 |
| 17 | P8703017 PAWL |

| REF PART # | DESCRIPTION |
|------------|------------------------------|
| 18 | P8703018 LEFT HOUSING |
| 19 | P8703019 SUSPENSION SPRING |
| 20 | P8703020 PAWL PIN |
| 21 | P8703021 LEFT SIDE PLATE |
| 22 | P8703022 LIFTING HOOK HANGER |
| 23 | P8703023 HOOK |
| 24 | P8703024 STRIPPER |
| 25 | P8703025 EXT RETAINING RING |
| 26 | P8703026 LOAD CHAIN PIN |
| 27 | P8703027 GUIDE ROLLER |
| 28 | P8703028 BEARING RACE |
| 29 | P8703029 LONG STAY |
| 30 | P8703030 EXT RETAINING RING |
| 31 | P8703031 PLATE BRACKET |
| 32 | P8703032 ROLLER |
| 33 | P8703033 RIGHT HOUSING |
| 34 | P8703034 SAFETY CATCH |

WARNING

All service or repair to the hoist **MUST** be performed by a qualified hoist service technician who is familiar with this hoist. Failure to heed this warning could result in hoist failure, which could result in death, serious personal injury, or property damage.

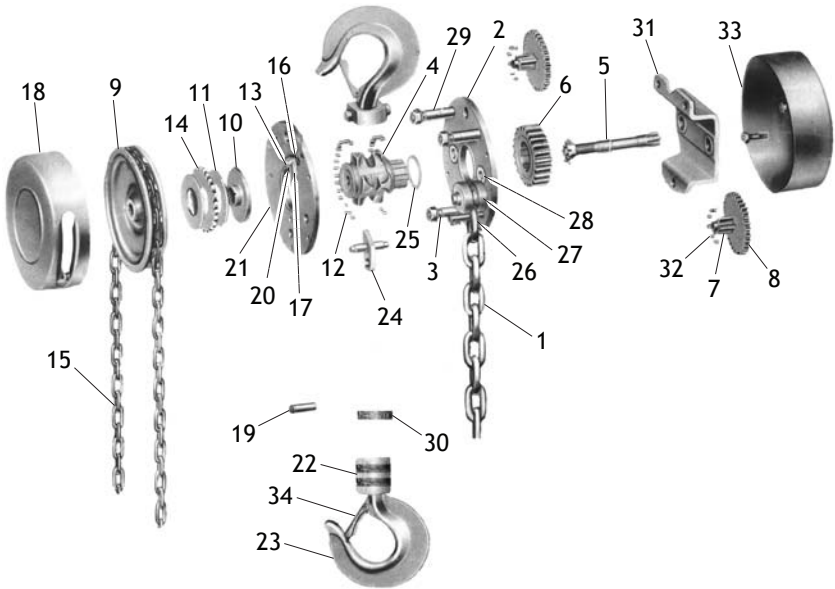
G8704



| REF PART # | DESCRIPTION |
|------------|---------------------------------|
| 1 | P8704001 LOAD CHAIN G80 |
| 2 | P8704002 RIGHT SIDE PLATE |
| 3 | P8704003 SHORT STAY |
| 4 | P8704004 LOAD CHAIN SPROCKET |
| 5 | P8704005 DRIVE SHAFT |
| 6 | P8704006 SPLINED GEAR |
| 7 | P8704007 PINION SHAFT |
| 8 | P8704008 DISK GEAR |
| 9 | P8704009 LIFTING CHAIN SPROCKET |
| 10 | P8704010 BRAKE SEAT |
| 11 | P8704011 FRICTION PLATE |
| 12 | P8704012 ROLLER |
| 13 | P8704013 BEARING RACE |
| 14 | P8704014 RATCHET DISC |
| 15 | P8704015 LIFTING CHAIN |
| 16 | P8704016 PAWL SPRING .8 X 10.2 |
| 17 | P8704017 PAWL |

| REF PART # | DESCRIPTION |
|------------|------------------------------|
| 18 | P8704018 LEFT HOUSING |
| 19 | P8704019 SUSPENSION SPRING |
| 20 | P8704020 PAWL PIN |
| 21 | P8704021 LEFT SIDE PLATE |
| 22 | P8704022 LIFTING HOOK HANGER |
| 23 | P8704023 HOOK |
| 24 | P8704024 STRIPPER |
| 25 | P8704025 EXT RETAINING RING |
| 26 | P8704026 LOAD CHAIN PIN |
| 27 | P8704027 GUIDE ROLLER |
| 28 | P8704028 BEARING RACE |
| 29 | P8704029 LONG STAY |
| 30 | P8704030 EXT RETAINING RING |
| 31 | P8704031 PLATE BRACKET |
| 32 | P8704032 ROLLER |
| 33 | P8704033 RIGHT HOUSING |
| 34 | P8704034 SAFETY CATCH |

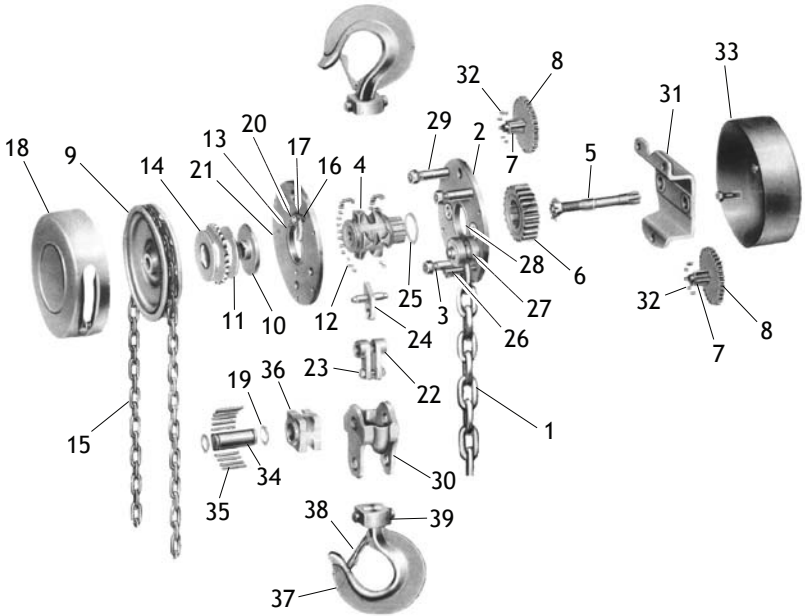
G8705



| REF PART # | DESCRIPTION |
|------------|---------------------------------|
| 1 | P8705001 LOAD CHAIN G80 |
| 2 | P8705002 RIGHT SIDE PLATE |
| 3 | P8705003 SHORT STAY |
| 4 | P8705004 LOAD CHAIN SPROCKET |
| 5 | P8705005 DRIVE SHAFT |
| 6 | P8705006 SPLINED GEAR |
| 7 | P8705007 PINION SHAFT |
| 8 | P8705008 DISK GEAR |
| 9 | P8705009 LIFTING CHAIN SPROCKET |
| 10 | P8705010 BRAKE SEAT |
| 11 | P8705011 FRICTION PLATE |
| 12 | P8705012 ROLLER |
| 13 | P8705013 BEARING RACE |
| 14 | P8705014 RATCHET DISC |
| 15 | P8705015 LIFTING CHAIN |
| 16 | P8705016 PAWL SPRING .8 X 10.2 |
| 17 | P8705017 PAWL |

| REF PART # | DESCRIPTION |
|------------|------------------------------|
| 18 | P8705018 LEFT HOUSING |
| 19 | P8705019 SUSPENSION SPRING |
| 20 | P8705020 PAWL PIN |
| 21 | P8705021 LEFT SIDE PLATE |
| 22 | P8705022 LIFTING HOOK HANGER |
| 23 | P8705023 HOOK |
| 24 | P8705024 STRIPPER |
| 25 | P8705025 EXT RETAINING RING |
| 26 | P8705026 LOAD CHAIN PIN |
| 27 | P8705027 GUIDE ROLLER |
| 28 | P8705028 BEARING RACE |
| 29 | P8705029 LONG STAY |
| 30 | P8705030 EXT RETAINING RING |
| 31 | P8705031 PLATE BRACKET |
| 32 | P8705032 ROLLER |
| 33 | P8705033 RIGHT HOUSING |
| 34 | P8705034 SAFETY CATCH |

G8706



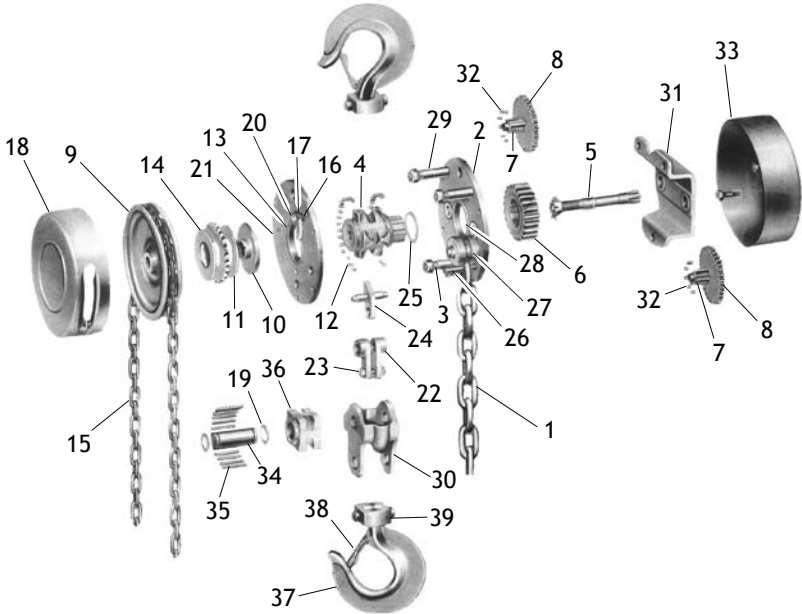
REF PART # DESCRIPTION

| | | |
|----|----------|------------------------|
| 1 | P8706001 | LOAD CHAIN G80 |
| 2 | P8706002 | RIGHT SIDE PLATE |
| 3 | P8706003 | SHORT STAY |
| 4 | P8706004 | LOAD CHAIN SPROCKET |
| 5 | P8706005 | DRIVE SHAFT |
| 6 | P8706006 | SPLINED GEAR |
| 7 | P8706007 | PINION SHAFT |
| 8 | P8706008 | DISK GEAR |
| 9 | P8706009 | LIFTING CHAIN SPROCKET |
| 10 | P8706010 | BRAKE SEAT |
| 11 | P8706011 | FRICTION PLATE |
| 12 | P8706012 | ROLLER |
| 13 | P8706013 | BEARING RACE |
| 14 | P8706014 | RATCHET DISC |
| 15 | P8706015 | LIFTING CHAIN |
| 16 | P8706016 | PAWL SPRING |
| 17 | P8706017 | PAWL |
| 18 | P8706018 | LEFT HOUSING |
| 19 | P8706019 | EXT RETAINING RING |
| 20 | P8706020 | PAWL PIN |

REF PART # DESCRIPTION

| | | |
|----|----------|-------------------------|
| 21 | P8706021 | LEFT SIDE PLATE |
| 22 | P8706022 | SUSPENSION PLATE |
| 23 | P8706023 | SUSPENSION PIN |
| 24 | P8706024 | STRIPPER |
| 25 | P8706025 | EXT RETAINING RING |
| 26 | P8706026 | LOAD CHAIN PIN |
| 27 | P8706027 | GUIDE ROLLER |
| 28 | P8706028 | BEARING RACE |
| 29 | P8706029 | LONG STAY |
| 30 | P8706030 | LIFTING HOOK HANGER |
| 31 | P8706031 | PLATE BRACKET |
| 32 | P8706032 | ROLLER |
| 33 | P8706033 | RIGHT HOUSING |
| 34 | P8706034 | NEEDLE SHAFT |
| 35 | P8706035 | NEEDLE BEARING 3 X 29.8 |
| 36 | P8706036 | IDLE SHEAVE |
| 37 | P8706037 | HOOK |
| 38 | P8706038 | SAFETY CATCH |
| 39 | P8706039 | HOOK HOLDER |

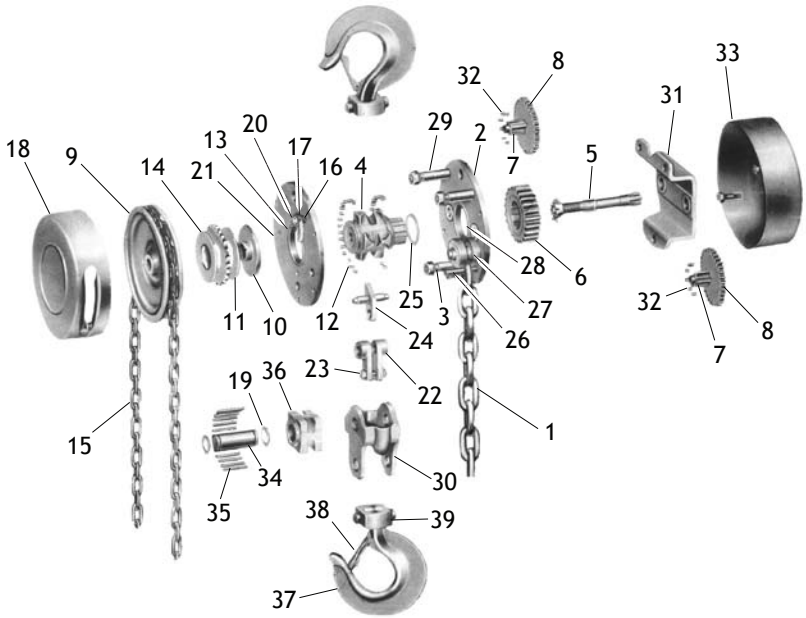
G8707



| REF PART # | DESCRIPTION |
|------------|---------------------------------|
| 1 | P8707001 LOAD CHAIN G80 |
| 2 | P8707002 RIGHT SIDE PLATE |
| 3 | P8707003 SHORT STAY |
| 4 | P8707004 LOAD CHAIN SPROCKET |
| 5 | P8707005 DRIVE SHAFT |
| 6 | P8707006 SPLINED GEAR |
| 7 | P8707007 PINION SHAFT |
| 8 | P8707008 DISK GEAR |
| 9 | P8707009 LIFTING CHAIN SPROCKET |
| 10 | P8707010 BRAKE SEAT |
| 11 | P8707011 FRICTION PLATE |
| 12 | P8707012 ROLLER |
| 13 | P8707013 BEARING RACE |
| 14 | P8707014 RATCHET DISC |
| 15 | P8707015 LIFTING CHAIN |
| 16 | P8707016 PAWL SPRING |
| 17 | P8707017 PAWL |
| 18 | P8707018 LEFT HOUSING |
| 19 | P8707019 EXT RETAINING RING |
| 20 | P8707020 PAWL PIN |

| REF PART # | DESCRIPTION |
|------------|----------------------------------|
| 21 | P8707021 LEFT SIDE PLATE |
| 22 | P8707022 SUSPENSION PLATE |
| 23 | P8707023 SUSPENSION PIN |
| 24 | P8707024 STRIPPER |
| 25 | P8707025 EXT RETAINING RING |
| 26 | P8707026 LOAD CHAIN PIN |
| 27 | P8707027 GUIDE ROLLER |
| 28 | P8707028 BEARING RACE |
| 29 | P8707029 LONG STAY |
| 30 | P8707030 LIFTING HOOK HANGER |
| 31 | P8707031 PLATE BRACKET |
| 32 | P8707032 ROLLER |
| 33 | P8707033 RIGHT HOUSING |
| 34 | P8707034 NEEDLE SHAFT |
| 35 | P8707035 NEEDLE BEARING 3 X 29.8 |
| 36 | P8707036 IDLE SHEAVE |
| 37 | P8707037 HOOK |
| 38 | P8707038 SAFETY CATCH |
| 39 | P8707039 HOOK HOLDER |

G8708



REF PART # DESCRIPTION

| | | |
|----|----------|------------------------|
| 1 | P8708001 | LOAD CHAIN G80 |
| 2 | P8708002 | RIGHT SIDE PLATE |
| 3 | P8708003 | SHORT STAY |
| 4 | P8708004 | LOAD CHAIN SPROCKET |
| 5 | P8708005 | DRIVE SHAFT |
| 6 | P8708006 | SPLINED GEAR |
| 7 | P8708007 | PINION SHAFT |
| 8 | P8708008 | DISK GEAR |
| 9 | P8708009 | LIFTING CHAIN SPROCKET |
| 10 | P8708010 | BRAKE SEAT |
| 11 | P8708011 | FRICTION PLATE |
| 12 | P8708012 | ROLLER |
| 13 | P8708013 | BEARING RACE |
| 14 | P8708014 | RATCHET DISC |
| 15 | P8708015 | LIFTING CHAIN |
| 16 | P8708016 | PAWL SPRING |
| 17 | P8708017 | PAWL |
| 18 | P8708018 | LEFT HOUSING |
| 19 | P8708019 | EXT RETAINING RING |
| 20 | P8708020 | PAWL PIN |

REF PART # DESCRIPTION

| | | |
|----|----------|-------------------------|
| 21 | P8708021 | LEFT SIDE PLATE |
| 22 | P8708022 | SUSPENSION PLATE |
| 23 | P8708023 | SUSPENSION PIN |
| 24 | P8708024 | STRIPPER |
| 25 | P8708025 | EXT RETAINING RING |
| 26 | P8708026 | LOAD CHAIN PIN |
| 27 | P8708027 | GUIDE ROLLER |
| 28 | P8708028 | BEARING RACE |
| 29 | P8708029 | LONG STAY |
| 30 | P8708030 | LIFTING HOOK HANGER |
| 31 | P8708031 | PLATE BRACKET |
| 32 | P8708032 | ROLLER |
| 33 | P8708033 | RIGHT HOUSING |
| 34 | P8708034 | NEEDLE SHAFT |
| 35 | P8708035 | NEEDLE BEARING 3 X 29.8 |
| 36 | P8708036 | IDLE SHEAVE |
| 37 | P8708037 | HOOK |
| 38 | P8708038 | SAFETY CATCH |
| 39 | P8708039 | HOOK HOLDER |

WARRANTY

Grizzly Industrial, Inc. warrants every product it sells for a period of **1 year** to the original purchaser from the date of purchase. This warranty does not apply to defects due directly or indirectly to misuse, abuse, negligence, accidents, repairs or alterations or lack of maintenance. This is Grizzly's sole written warranty and any and all warranties that may be implied by law, including any merchantability or fitness, for any particular purpose, are hereby limited to the duration of this written warranty. We do not warrant or represent that the merchandise complies with the provisions of any law or acts unless the manufacturer so warrants. In no event shall Grizzly's liability under this warranty exceed the purchase price paid for the product and any legal actions brought against Grizzly shall be tried in the State of Washington, County of Whatcom.

We shall in no event be liable for death, injuries to persons or property or for incidental, contingent, special, or consequential damages arising from the use of our products.

To take advantage of this warranty, contact us by mail or phone and give us all the details. We will then issue you a "Return Authorization Number," which must be clearly posted on the outside as well as the inside of the carton. We will not accept any item back without this number. Proof of purchase must accompany the merchandise.

The manufacturers reserve the right to change specifications at any time because they constantly strive to achieve better quality equipment. We make every effort to ensure that our products meet high quality and durability standards and we hope you never need to use this warranty.

Please feel free to write or call us if you have any questions about the machine or the manual.

Grizzly Industrial, Inc.
1203 Lycoming Mall Circle
Muncy, PA 17756
Phone: (570) 546-9663
Fax: (800) 438-5901

E-Mail:
techsupport@grizzly.com

Web Site: <http://www.grizzly.com>

Thank you again for your business and continued support. We hope to serve you again soon!