

READ THIS FIRST



Model G4176

*****IMPORTANT UPDATE*****

For Machines Mfd. Since 11/16
and Owner's Manual Revised 04/14

For questions or help with this product contact Tech Support at (570) 546-9663 or techsupport@grizzly.com

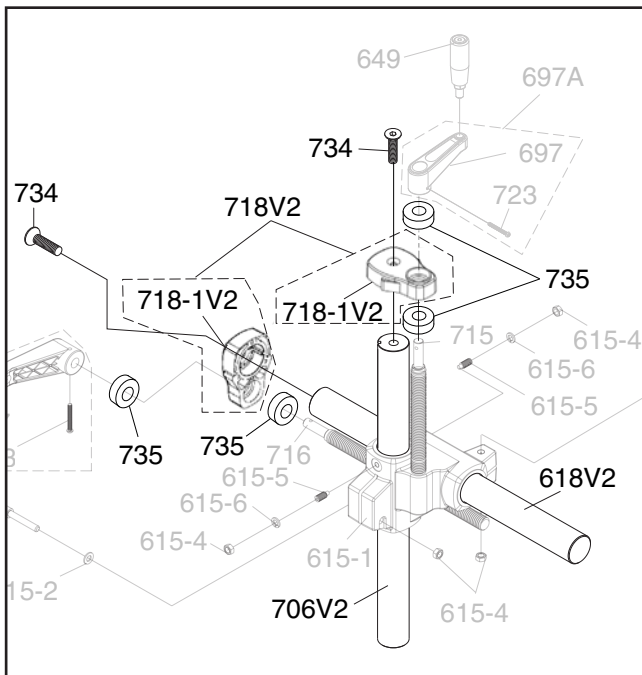
The following changes were recently made to this machine since the owner's manual was printed:

- Redesigned stand column shafts, column caps, and various related hardware (see below).

Aside from this information, all other content in the owner's manual applies and **MUST** be read and understood for your own safety. **IMPORTANT: Keep this update with the owner's manual for future reference.**

For questions or help, contact our Tech Support at (570) 546-9663 or techsupport@grizzly.com.

Revised Stand Parts



REF	PART #	DESCRIPTION
618V2	P4176618V2	OVER ARM SHAFT V2.11.16
706V2	P4176706V2	ELEVATING SHAFT V2.11.16
718V2	P4176718V2	COLUMN CAP ASSEMBLY V2.11.16
718-1V2	P4176718-1V2	COLUMN CAP V2.11.16
734	P4176734	FLAT HD CAP SCR M8-1.25 X 20
735	P4176735	BUSHING

COPYRIGHT © OCTOBER, 2016 BY GRIZZLY INDUSTRIAL, INC.
**WARNING: NO PORTION OF THIS MANUAL MAY BE REPRODUCED IN ANY SHAPE
OR FORM WITHOUT THE WRITTEN APPROVAL OF GRIZZLY INDUSTRIAL, INC.**
#BL18433 PRINTED IN TAIWAN

Grizzly **Industrial, Inc.**®

MODEL G4176 **1/4 HP POWER FEEDER** **OWNER'S MANUAL** *(For models manufactured since 5/14)*




C US
LR109179

COPYRIGHT © JUNE, 2008 BY GRIZZLY INDUSTRIAL, INC. REVISED APRIL, 2014 (TS)
**WARNING: NO PORTION OF THIS MANUAL MAY BE REPRODUCED IN ANY SHAPE
OR FORM WITHOUT THE WRITTEN APPROVAL OF GRIZZLY INDUSTRIAL, INC.**
#CR10815 PRINTED IN TAIWAN

V2.04.14



WARNING!

This manual provides critical safety instructions on the proper setup, operation, maintenance, and service of this machine/tool. Save this document, refer to it often, and use it to instruct other operators.

Failure to read, understand and follow the instructions in this manual may result in fire or serious personal injury—including amputation, electrocution, or death.

The owner of this machine/tool is solely responsible for its safe use. This responsibility includes but is not limited to proper installation in a safe environment, personnel training and usage authorization, proper inspection and maintenance, manual availability and comprehension, application of safety devices, cutting/sanding/grinding tool integrity, and the usage of personal protective equipment.

The manufacturer will not be held liable for injury or property damage from negligence, improper training, machine modifications or misuse.



WARNING!

Some dust created by power sanding, sawing, grinding, drilling, and other construction activities contains chemicals known to the State of California to cause cancer, birth defects or other reproductive harm. Some examples of these chemicals are:

- **Lead from lead-based paints.**
- **Crystalline silica from bricks, cement and other masonry products.**
- **Arsenic and chromium from chemically-treated lumber.**

Your risk from these exposures varies, depending on how often you do this type of work. To reduce your exposure to these chemicals: Work in a well ventilated area, and work with approved safety equipment, such as those dust masks that are specially designed to filter out microscopic particles.

Table of Contents

- INTRODUCTION..... 2**
 - Manual Accuracy 2
 - Contact Info 2
 - Machine Data Sheet..... 3
 - Components & Terminology 5
- SECTION 1: SAFETY 6**
 - Safety Instructions for Machinery 6
 - Additional Safety for Power Feeders 8
- SECTION 2: POWER SUPPLY 9**
- SECTION 3: SETUP 11**
 - Unpacking 11
 - Needed for Setup 11
 - Inventory..... 12
 - Cleanup 13
 - Assembly 14
 - Base Mounting 15
 - Mounting Options 16
 - Test Run 17
- SECTION 4: OPERATIONS..... 18**
 - Basic Use & Care..... 18
 - Changing Feed Speed 19
- SECTION 5: MAINTENANCE 20**
 - Schedule 20
 - Cleaning 20
 - Lubrication..... 20
- SECTION 6: ACCESSORIES 21**
- SECTION 7: SERVICE 23**
 - Troubleshooting..... 23
 - Wheel Replacement..... 24
- SECTION 8: WIRING..... 25**
 - Wiring Safety Instructions 25
 - Wiring Diagram 26
- SECTION 9: PARTS 27**
 - Main Breakdown 27
 - Base Breakdown 29
- WARRANTY & RETURNS..... 32**



INTRODUCTION

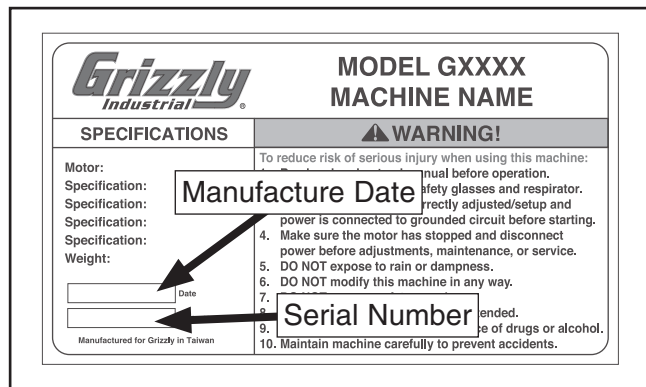
Manual Accuracy

We are proud to provide a high-quality owner's manual with your new machine!

We made every effort to be exact with the instructions, specifications, drawings, and photographs contained inside. Sometimes we make mistakes, but our policy of continuous improvement also means that **sometimes the machine you receive will be slightly different than what is shown in the manual.**

If you find this to be the case, and the difference between the manual and machine leaves you confused about a procedure, check our website for an updated version. We post current manuals and manual updates for free on our website at **www.grizzly.com.**

Alternatively, you can call our Technical Support for help. Before calling, please write down the **Manufacture Date** and **Serial Number** stamped into the machine ID label (see below). This information helps us determine if updated documentation is available for your machine.



Contact Info

We stand behind our machines. If you have any questions or need help, use the information below to contact us. Before contacting, please get the serial number and manufacture date of your machine. This will help us help you faster.

Grizzly Technical Support
1203 Lycoming Mall Circle
Muncy, PA 17756
Phone: (570) 546-9663
Email: techsupport@grizzly.com

We want your feedback on this manual. What did you like about it? Where could it be improved? Please take a few minutes to give us feedback.

Grizzly Documentation Manager
P.O. Box 2069
Bellingham, WA 98227-2069
Email: manuals@grizzly.com





MACHINE DATA SHEET

Customer Service #: (570) 546-9663 · To Order Call: (800) 523-4777 · Fax #: (800) 438-5901

MODEL G4176 1/4 HP POWER FEEDER

Product Dimensions:

Weight..... 73 lbs.
Width (side-to-side) x Depth (front-to-back) x Height..... 34 x 13 x 24 in.
Footprint (Length x Width)..... N/A x N/A

Shipping Dimensions:

Type..... Cardboard
Content..... Machine
Weight..... 79 lbs.
Length x Width x Height..... 23 x 23 x 11 in.

Electrical:

Power Requirement..... 120V, Single-Phase, 60 Hz
Minimum Circuit Size..... 15A
Switch..... Forward/Reverse Barrel
Switch Voltage..... 120V
Cord Length..... 9 ft.
Cord Gauge..... 18 AWG
Plug Included..... Yes
Included Plug Type..... NEMA 5-15

Motors:

Main

Type..... TEFC Capacitor Start Induction
Horsepower..... 1/4 HP
Voltage..... 120V
Phase..... Single
Amps..... 2.5A
Speed..... 1660 RPM
Cycle..... 60 Hz
Number of Speeds..... 1
Power Transfer Gear Box
Bearings..... Lubricated for Life

Main Specifications:

Workpiece Capacities

Minimum WorkPiece Length..... 5 in.

Operation Info

Number of Feed Speeds..... 4
Feed Speeds..... 18, 25, 30, 41 FPM
Swing..... 360 deg.
Vertical Movement..... 6-1/2 in.
Horizontal Movement..... 10 in.
Rotation..... Forward, Reverse



Roller Info

Number of Rollers..... 3
 Roller Width..... 1-3/16 in.
 Roller Diameter..... 3-1/8 in.
 Roller Suspension..... 3/4 in.
 Maximum Height Rollers Parallel Table Surface..... 6 in.
 Centers Between Rollers..... 3-3/8 – 4-3/8 in.

Other

Column Diameter..... 1-1/2 in.

Construction Info

Roller..... Synthetic Rubber
 Housing..... Cast Aluminum
 Supports..... Cast Iron
 Column..... Steel
 Paint..... Epoxy

Other Specifications:

ISO 9001 Factory Yes
 CSA Certified Yes
 Country Of Origin Taiwan
 Warranty 1 Year
 Serial Number Location "Checked" Sticker, On In-feed Portion Of Housing's Roller Cover Side
 Customer Assembly & Setup Time 30 Minutes

Features:

Rollers are Spring Tensioned
 Heavy-Duty Gear Reduction with Hardened Gears
 Universal Positioning with Handle Locks



Components & Terminology

Refer to **Figure 1** and your power feeder to familiarize yourself with the controls, features, and terminology used in this manual. Doing so will make setup, use, and any future maintenance easier.

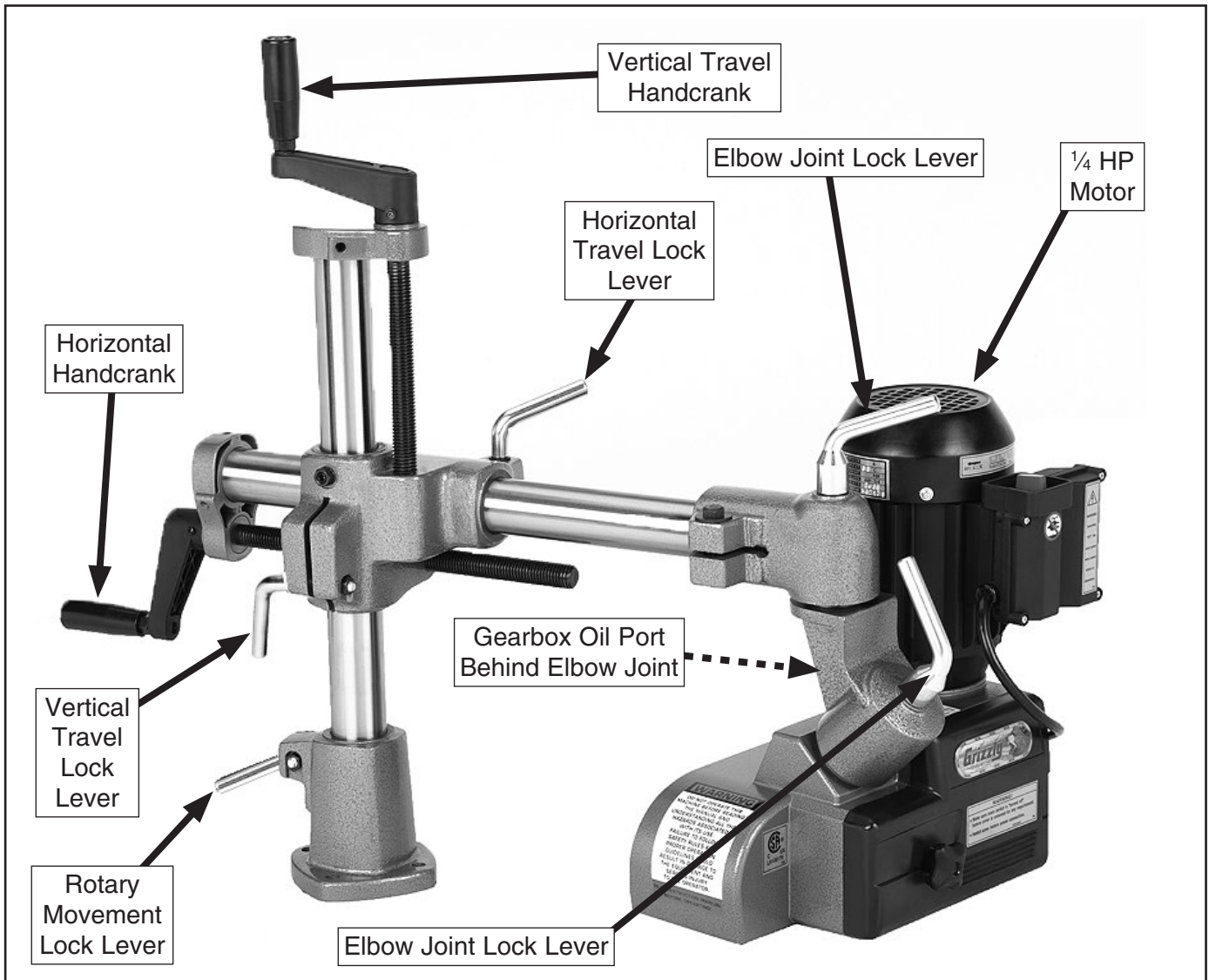


Figure 1. Controls and features.

	<p>! WARNING To reduce your risk of serious injury, read this entire manual BEFORE using machine.</p>
---	---




SECTION 1: SAFETY

For Your Own Safety, Read Instruction Manual Before Operating This Machine

The purpose of safety symbols is to attract your attention to possible hazardous conditions. This manual uses a series of symbols and signal words intended to convey the level of importance of the safety messages. The progression of symbols is described below. Remember that safety messages by themselves do not eliminate danger and are not a substitute for proper accident prevention measures. Always use common sense and good judgment.

 **DANGER** Indicates an imminently hazardous situation which, if not avoided, **WILL** result in death or serious injury.

 **WARNING** Indicates a potentially hazardous situation which, if not avoided, **COULD** result in death or serious injury.

 **CAUTION** Indicates a potentially hazardous situation which, if not avoided, **MAY** result in minor or moderate injury. It may also be used to alert against unsafe practices.

NOTICE This symbol is used to alert the user to useful information about proper operation of the machine.

Safety Instructions for Machinery

WARNING

OWNER'S MANUAL. Read and understand this owner's manual **BEFORE** using machine.

TRAINED OPERATORS ONLY. Untrained operators have a higher risk of being hurt or killed. Only allow trained/supervised people to use this machine. When machine is not being used, disconnect power, remove switch keys, or lock-out machine to prevent unauthorized use—especially around children. Make workshop kid proof!

DANGEROUS ENVIRONMENTS. Do not use machinery in areas that are wet, cluttered, or have poor lighting. Operating machinery in these areas greatly increases the risk of accidents and injury.

MENTAL ALERTNESS REQUIRED. Full mental alertness is required for safe operation of machinery. Never operate under the influence of drugs or alcohol, when tired, or when distracted.

ELECTRICAL EQUIPMENT INJURY RISKS. You can be shocked, burned, or killed by touching live electrical components or improperly grounded machinery. To reduce this risk, only allow qualified service personnel to do electrical installation or repair work, and always disconnect power before accessing or exposing electrical equipment.

DISCONNECT POWER FIRST. Always disconnect machine from power supply **BEFORE** making adjustments, changing tooling, or servicing machine. This prevents an injury risk from unintended startup or contact with live electrical components.

EYE PROTECTION. Always wear ANSI-approved safety glasses or a face shield when operating or observing machinery to reduce the risk of eye injury or blindness from flying particles. Everyday eyeglasses are **NOT** approved safety glasses.



WARNING

WEARING PROPER APPAREL. Do not wear clothing, apparel or jewelry that can become entangled in moving parts. Always tie back or cover long hair. Wear non-slip footwear to avoid accidental slips, which could cause loss of workpiece control.

HAZARDOUS DUST. Dust created while using machinery may cause cancer, birth defects, or long-term respiratory damage. Be aware of dust hazards associated with each workpiece material, and always wear a NIOSH-approved respirator to reduce your risk.

HEARING PROTECTION. Always wear hearing protection when operating or observing loud machinery. Extended exposure to this noise without hearing protection can cause permanent hearing loss.

REMOVE ADJUSTING TOOLS. Tools left on machinery can become dangerous projectiles upon startup. Never leave chuck keys, wrenches, or any other tools on machine. Always verify removal before starting!

USE CORRECT TOOL FOR THE JOB. Only use this tool for its intended purpose—do not force it or an attachment to do a job for which it was not designed. Never make unapproved modifications—modifying tool or using it differently than intended may result in malfunction or mechanical failure that can lead to personal injury or death!

AWKWARD POSITIONS. Keep proper footing and balance at all times when operating machine. Do not overreach! Avoid awkward hand positions that make workpiece control difficult or increase the risk of accidental injury.

CHILDREN & BYSTANDERS. Keep children and bystanders at a safe distance from the work area. Stop using machine if they become a distraction.

GUARDS & COVERS. Guards and covers reduce accidental contact with moving parts or flying debris. Make sure they are properly installed, undamaged, and working correctly.

FORCING MACHINERY. Do not force machine. It will do the job safer and better at the rate for which it was designed.

NEVER STAND ON MACHINE. Serious injury may occur if machine is tipped or if the cutting tool is unintentionally contacted.

STABLE MACHINE. Unexpected movement during operation greatly increases risk of injury or loss of control. Before starting, verify machine is stable and mobile base (if used) is locked.

USE RECOMMENDED ACCESSORIES. Consult this owner's manual or the manufacturer for recommended accessories. Using improper accessories will increase the risk of serious injury.

UNATTENDED OPERATION. To reduce the risk of accidental injury, turn machine **OFF** and ensure all moving parts completely stop before walking away. Never leave machine running while unattended.

MAINTAIN WITH CARE. Follow all maintenance instructions and lubrication schedules to keep machine in good working condition. A machine that is improperly maintained could malfunction, leading to serious personal injury or death.

CHECK DAMAGED PARTS. Regularly inspect machine for any condition that may affect safe operation. Immediately repair or replace damaged or mis-adjusted parts before operating machine.

MAINTAIN POWER CORDS. When disconnecting cord-connected machines from power, grab and pull the plug—NOT the cord. Pulling the cord may damage the wires inside. Do not handle cord/plug with wet hands. Avoid cord damage by keeping it away from heated surfaces, high traffic areas, harsh chemicals, and wet/damp locations.

EXPERIENCING DIFFICULTIES. If at any time you experience difficulties performing the intended operation, stop using the machine! Contact our Technical Support at (570) 546-9663.



Additional Safety for Power Feeders

WARNING

MAIN INJURY HAZARDS: Death, amputation, or crushing injuries from getting entangled in moving parts—which may include being pulled into the cutting tool on attached machinery; and death, blindness, broken bones, or bruises from being struck by an ejected workpiece (kickback). To minimize your risk of these hazards, always heed the following information:

ATTACHED MACHINERY. Follow all warnings and safety information for the attached machine doing the cutting work.

HAND SAFETY. Keep hands away from rotating parts on power feeder and spinning blade or cutter of associated machine. Turn power feeder and associated machine **OFF** and only use a brush or compressed air to remove sawdust.

INSTALLING GUARDS. Install guards, fences, and hold-downs before starting attached machine or power feeder. Repair or replace guards promptly if they become damaged.

KICKBACK. Occurs when workpiece is ejected from machine with great force, striking operator or bystanders. Commonly caused by improper machine or power feeder setup.

VERIFY EACH SETUP. Ensure that power feeder is set up correctly and firmly secured before feeding workpiece. An improperly adjusted power feeder could increase the risk of kickback, because it will continue feeding when stock is not properly positioned for the cut.

FEATHERBOARD. When cutting long or large stock that is difficult to feed properly, use a featherboard before power feeder (on the infeed side) to maintain even pressure and control of workpiece against fence, and help reduce risk of kickback.

FEED WORKPIECE PROPERLY. Verify blade or cutter of associated machine is at full speed before feeding stock with power feeder. Do not feed workpiece too quickly. Verify power feeder wheels are slightly lower than workpiece. Stop power feeder before stopping cutting tool.

WORKPIECE SUPPORT. Support workpiece continuously during operation as required. Use auxiliary stands or support tables for long or wide stock.

ADJUSTMENTS/MAINTENANCE. Make sure power feeder is turned **OFF**, disconnected from power, and all moving parts are completely stopped before doing adjustments or maintenance.

WARNING

Like all machines there is danger associated with this machine. Accidents are frequently caused by lack of familiarity or failure to pay attention. Use this machine with respect and caution to lessen the possibility of operator injury. If normal safety precautions are overlooked or ignored, serious personal injury may occur.

CAUTION

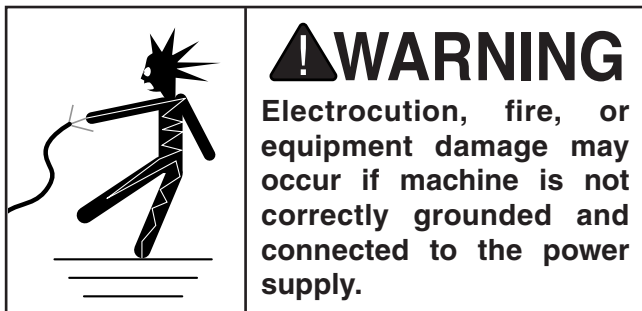
No list of safety guidelines can be complete. Every shop environment is different. Always consider safety first, as it applies to your individual working conditions. Use this and other machinery with caution and respect. Failure to do so could result in serious personal injury, damage to equipment, or poor work results.



SECTION 2: POWER SUPPLY

Availability

Before installing the machine, consider the availability and proximity of the required power supply circuit. If an existing circuit does not meet the requirements for this machine, a new circuit must be installed. To minimize the risk of electrocution, fire, or equipment damage, installation work and electrical wiring must be done by an electrician or qualified service personnel in accordance with all applicable codes and standards.



Full-Load Current Rating

The full-load current rating is the amperage a machine draws at 100% of the rated output power. On machines with multiple motors, this is the amperage drawn by the largest motor or sum of all motors and electrical devices that might operate at one time during normal operations.

Full-Load Current Rating at 120V2.5A

The full-load current is not the maximum amount of amps that the machine will draw. If the machine is overloaded, it will draw additional amps beyond the full-load rating.

If the machine is overloaded for a sufficient length of time, damage, overheating, or fire may result—especially if connected to an undersized circuit. To reduce the risk of these hazards, avoid overloading the machine during operation and make sure it is connected to a power supply circuit that meets the specified circuit requirements.

! WARNING

Serious injury could occur if you connect the machine to power before completing the setup process. DO NOT connect to power until instructed later in this manual.

120V Circuit Requirements

This machine is prewired to operate on a power supply circuit that has a verified ground and meets the following requirements:

Nominal Voltage 120V
Cycle60 Hz
Phase Single-Phase
Power Supply Circuit 15A

A power supply circuit includes all electrical equipment between the breaker box or fuse panel in the building and the machine. The power supply circuit used for this machine must be sized to safely handle the full-load current drawn from the machine for an extended period of time. (If this machine is connected to a circuit protected by fuses, use a time delay fuse marked D.)

! CAUTION

For your own safety and protection of property, consult an electrician if you are unsure about wiring practices or electrical codes in your area.

Note: *The circuit requirements listed in this manual apply to a dedicated circuit—where only one machine will be running at a time. If this machine will be connected to a shared circuit where multiple machines will be running at the same time, consult a qualified electrician to ensure that the circuit is properly sized for safe operation.*



Grounding & Plug Requirements

This machine **MUST** be grounded. In the event of certain malfunctions or breakdowns, grounding reduces the risk of electric shock by providing a path of least resistance for electric current.

This machine is equipped with a power cord that has an equipment-grounding wire and a grounding plug (similar to the figure below). The plug must only be inserted into a matching receptacle (outlet) that is properly installed and grounded in accordance with all local codes and ordinances.

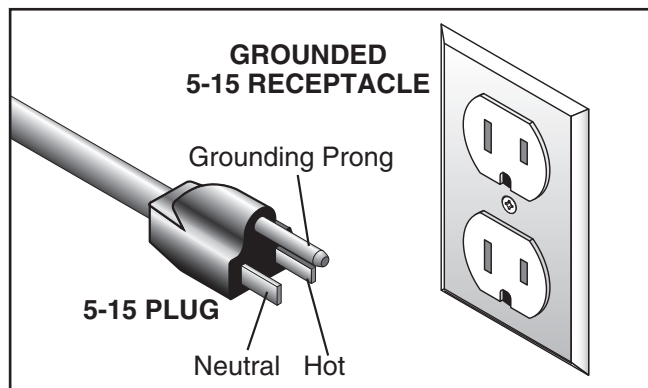


Figure 2. Typical 5-15 plug and receptacle.

⚠ CAUTION

SHOCK HAZARD!

Two-prong outlets do not meet the grounding requirements for this machine. Do not modify or use an adapter on the plug provided—if it will not fit the outlet, have a qualified electrician install the proper outlet with a verified ground.

Improper connection of the equipment-grounding wire can result in a risk of electric shock. The wire with green insulation (with or without yellow stripes) is the equipment-grounding wire. If repair or replacement of the power cord or plug is necessary, do not connect the equipment-grounding wire to a live (current carrying) terminal.

Check with a qualified electrician or service personnel if you do not understand these grounding requirements, or if you are in doubt about whether the tool is properly grounded. If you ever notice that a cord or plug is damaged or worn, disconnect it from power, and immediately replace it with a new one.

Extension Cords

We do not recommend using an extension cord with this machine. If you must use an extension cord, only use it if absolutely necessary and only on a temporary basis.

Extension cords cause voltage drop, which may damage electrical components and shorten motor life. Voltage drop increases as the extension cord size gets longer and the gauge size gets smaller (higher gauge numbers indicate smaller sizes).

Any extension cord used with this machine must contain a ground wire, match the required plug and receptacle, and meet the following requirements:

- Minimum Gauge Size16 AWG**
- Maximum Length (Shorter is Better).....50 ft.**



SECTION 3: SETUP

Unpacking

Your machine was carefully packaged for safe transportation. Remove the packaging materials from around your machine and inspect it. If you discover any damage, *please call us immediately at (570) 546-9663 for advice.*

Save the containers and all packing materials for possible inspection by the carrier or its agent. *Otherwise, filing a freight claim can be difficult.*

When you are completely satisfied with the condition of your shipment, inventory the contents.

Needed for Setup

The following are needed to complete the setup process, but are not included with your machine.

Description	Qty
• Safety Glasses	1
• Cleaner/Degreaser	As Needed
• Disposable Shop Rags.....	As Needed
• Medium-Grade Thread Locking Fluid.....	1



Inventory

The following is a list of items shipped with your machine. Before beginning setup, lay these items out and inventory them.

If any non-proprietary parts are missing (e.g. a nut or a washer), we will gladly replace them; or for the sake of expediency, replacements can be obtained at your local hardware store.

Box Inventory (Figures 3 & 4)	Qty
A. Elbow Joint Assembly	1
B. Power Feeder Assembly	1
C. Arm Assembly	1
D. Column Assembly	1
E. Handles	2
F. Crank Arms	2
G. Base Bolt Pattern Template.....	1
H. Base Assembly.....	1
I. Change Gear Set, 26/24-Tooth.....	1

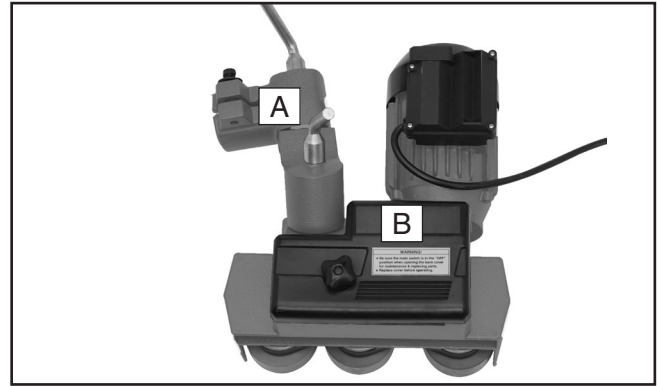


Figure 3. Power feeder inventory.

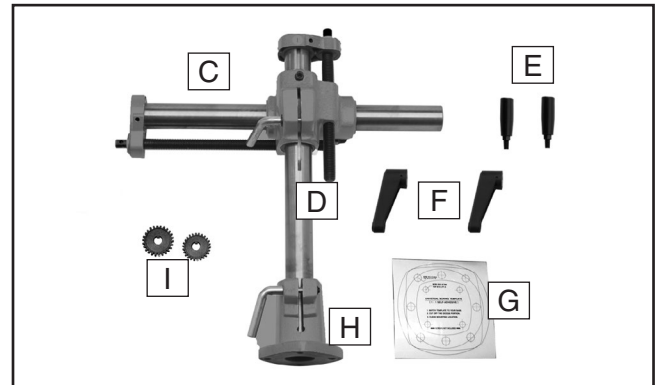


Figure 4. Base inventory.

NOTICE

If you cannot find an item on this list, carefully check around/inside the machine and packaging materials. Often, these items get lost in packaging materials while unpacking or they are pre-installed at the factory.



Cleanup

The unpainted surfaces of your machine are coated with a heavy-duty rust preventative that prevents corrosion during shipment and storage. This rust preventative works extremely well, but it will take a little time to clean.

Be patient and do a thorough job cleaning your machine. The time you spend doing this now will give you a better appreciation for the proper care of your machine's unpainted surfaces.

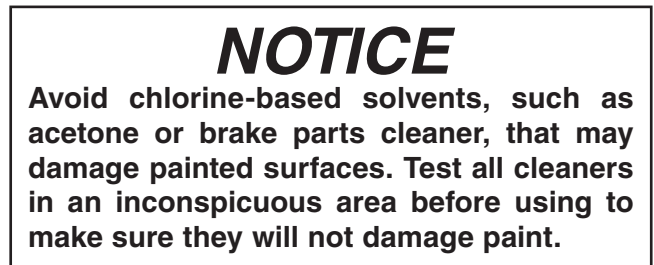
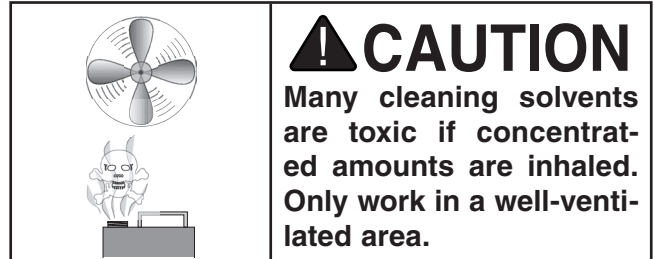
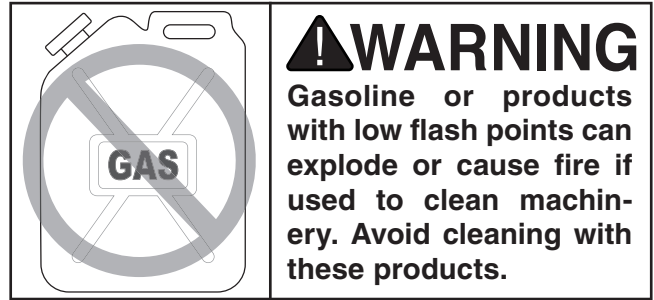
There are many ways to remove this rust preventative, but the following steps work well in a wide variety of situations. Always follow the manufacturer's instructions with any cleaning product you use and make sure you work in a well-ventilated area to minimize exposure to toxic fumes.

Before cleaning, gather the following:

- Disposable Rags
- Cleaner/degreaser (WD•40 works well)
- Safety glasses & disposable gloves
- Plastic paint scraper (optional)

Basic steps for removing rust preventative:

1. Put on safety glasses.
2. Coat the rust preventative with a liberal amount of cleaner/degreaser, then let it soak for 5–10 minutes.
3. Wipe off the surfaces. If your cleaner/degreaser is effective, the rust preventative will wipe off easily. If you have a plastic paint scraper, scrape off as much as you can first, then wipe off the rest with the rag.
4. Repeat **Steps 2–3** as necessary until clean, then coat all unpainted surfaces with a quality metal protectant to prevent rust.



T23692—Orange Power Degreaser

A great product for removing the waxy shipping grease from your machine during clean up.



Figure 5. T23692 Orange Power Degreaser.



Assembly

⚠️ WARNING

You **MUST** assemble all guards, fences, and holdowns before starting your machine or power feeder. Failure to heed this warning could result in serious personal injury.

To correctly position this power feeder on your table top, completely assemble the power feeder first in the order of **A**, **B** and **C**, as shown in **Figures 6** and **7**. Next, refer to **Base Mounting** on **Page 15**. With the power feeder unit completely assembled, it will be easier to locate where on the table top you will need to drill your base mounting holes, so you can take advantage of the full range of power feeder swing and adjustments.

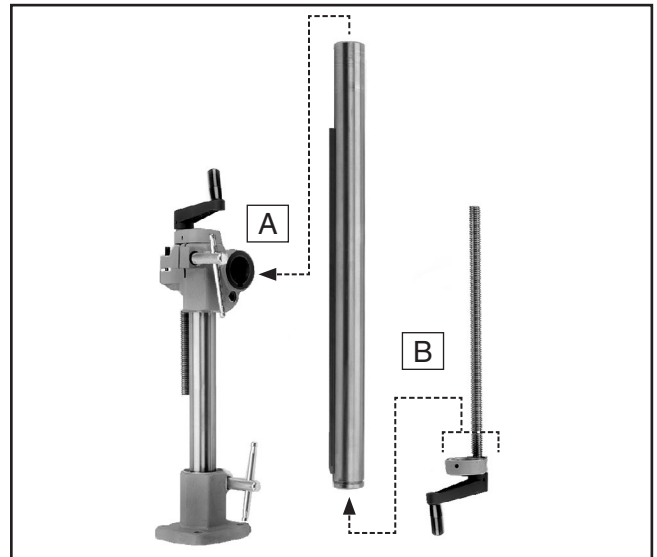


Figure 6. Stand assembly.

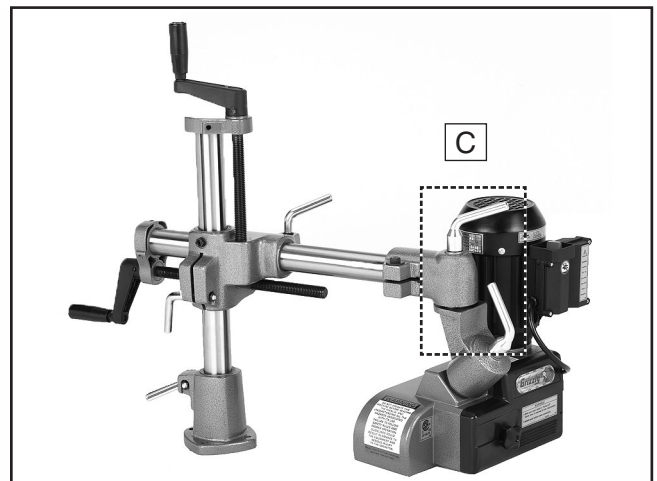


Figure 7. Assembled unit.



Base Mounting

Position the power feeder on the table top to determine where to drill your base mounting holes, so you can maximize power feeder swing and adjustment options.

There are three mounting options available: **Through Bolt Mounting**, **Direct Mounting**, and **Quick Holder Kit Mounting** (discussed on **Page 21**). Choose an option that suits your requirements.

Whichever way you mount your power feeder, you must be able to use the handcranks and lock levers to position the rubber wheels parallel with the table surface and $\frac{1}{8}$ " lower than the thickness of your workpiece.

Also, you must be able to point the power feeder slightly towards the machine fence (**see Figure 8**). In other words, the tracking of the power feeder must be toed-in approximately 1° to 1.5° degrees toward the machine fence so the rubber wheels slightly push the workpiece against the fence during cutting operations.

If cutting long or large stock that is difficult to feed properly, use a featherboard *before* the powerfeeder (on the infeed side) to maintain even pressure and control of the workpiece against the fence.

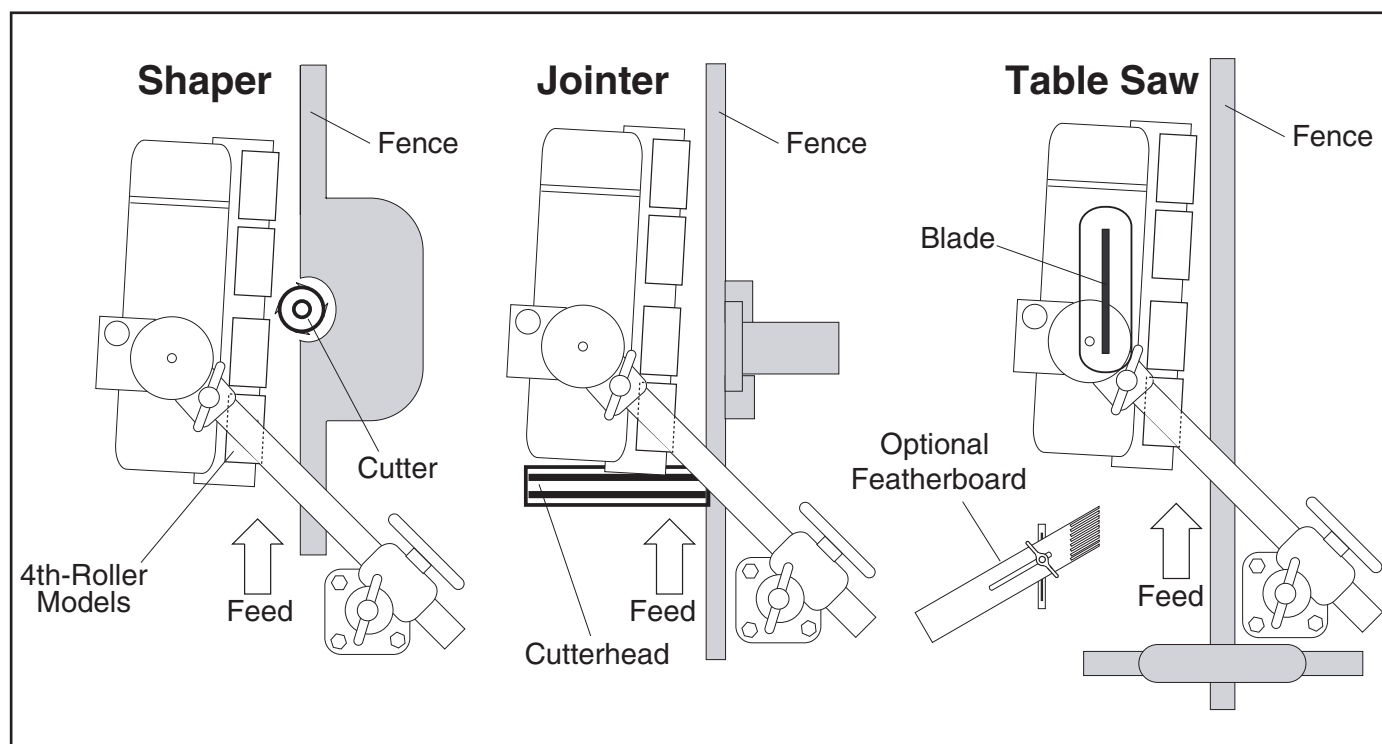


Figure 8. Typical power feed mounting on a shaper, jointer, and table saw.



Mounting Options

To correctly position this power feeder on your table top, completely assemble the power feeder first, then refer to this section and mount your base to the table using one of the two methods below. The reason for this order is that with the power feeder unit completely assembled, it will be easier to locate where on the table top you will need to drill your base mounting holes, so you can take advantage of the full range of power feeder swing and adjustments.

Through-Bolt Mounting

We recommend that you mount your new power feeder to the machine table with through bolts, nuts, and washers (see **Figure 9**). This option will give the most rigidity and clamping strength to prevent the feeder base from twisting out of alignment during use. However, if under-table support webs interfere with washer or nut locations under the table, you must use an optional clamping kit, or drill and thread holes directly into the table as described in **Direct Mounting**.

Direct Mounting

Use the included mounting template to drill and tap your table, so the power feeder base can be directly mounted to the table surface (see **Figure 10**). If the table is thinner than $\frac{3}{8}$ " thick where the threaded holes would be drilled and tapped, or if support webbing is in the way, the threads may strip or loosen as the power feeder is used. Thread locking compound will not cure this situation. Revert to the **Through-Bolt Mounting** option. In any case, make sure to use a medium-grade liquid thread locking compound on all threads.

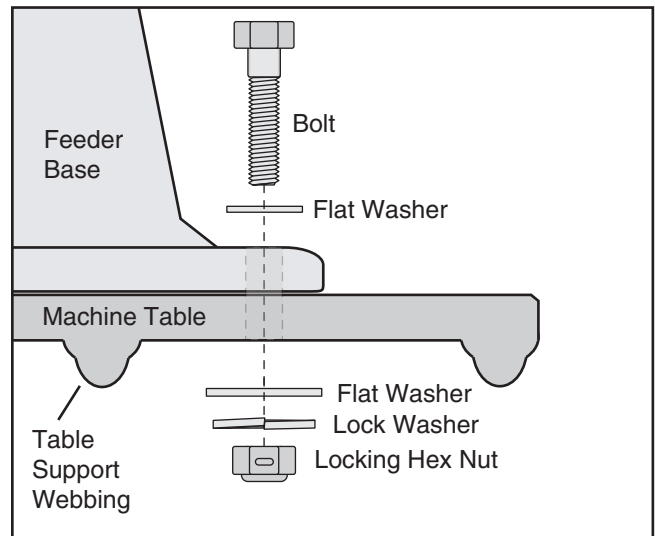


Figure 9. Through-bolt mounting.

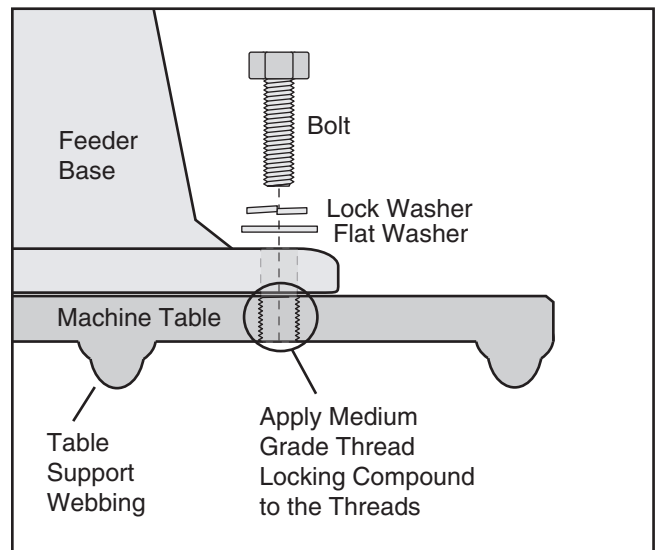


Figure 10. Direct mounting.

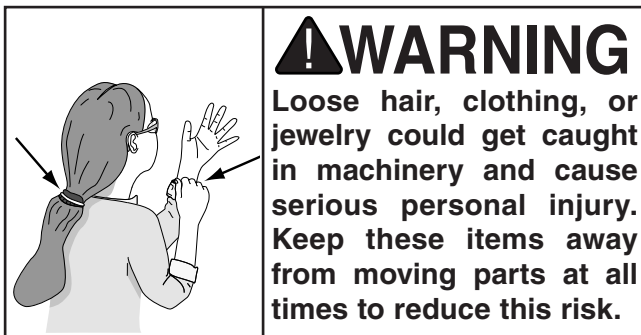


Test Run

Once the power feeder assembly is complete and it is mounted on the table, you must test run your power feeder to make sure it runs properly.

If, during the test run, you cannot easily locate the source of an unusual noise or vibration, stop using the power feeder immediately, then review the **Troubleshooting** on **Page 23**.

If you still cannot remedy a problem, contact our Technical Support at (570) 546-9663 for assistance.



To test run the power feed:

1. Read the entire instruction manual first!
2. Make sure all tools and foreign objects have been removed from the tabletop area.
3. Make sure that the power feeder gearbox oil level is full, the oil level should be 1" below the oil fill port. See **Figure 1** on **Page 5** for oil fill port location.
4. Ensure that all tools and objects used during set up are cleared away from the machine.
5. Adjust and lock the power feeder so the wheels are held approximately one inch above the table and nothing will interfere with wheel rotation.

6. Connect the power feeder to the power supply and use the feed direction switch (see **Figure 11**) to test operation in both **FOR** and **REV** directions.

- Listen and watch for abnormal noises or vibrations. The power feeder should run smoothly.
- Correct for any unusual noises or vibrations before operating the power feeder any further. Always disconnect the power feeder from power when investigating or correcting potential problems.

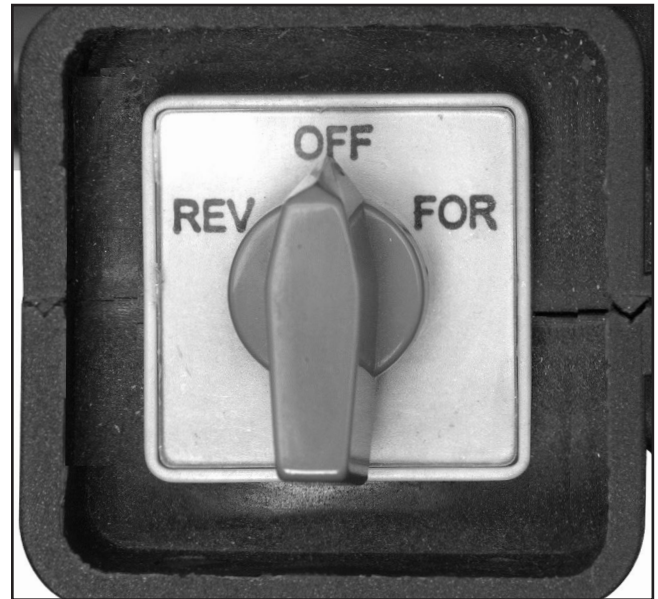
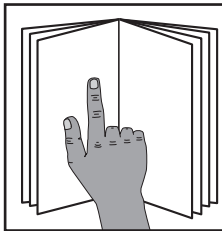


Figure 11. Feed direction switch.



SECTION 4: OPERATIONS

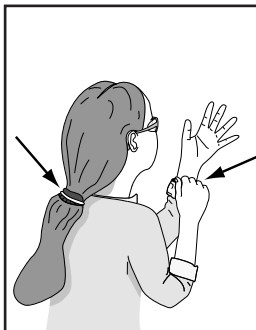
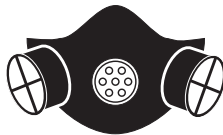


!WARNING

To reduce your risk of serious injury, read this entire manual **BEFORE** using machine.

!WARNING

To reduce risk of eye injury from flying chips or lung damage from breathing dust, always wear safety glasses and a respirator when operating this machine.



!WARNING

Loose hair, clothing, or jewelry could get caught in machinery and cause serious personal injury. Keep these items away from moving parts at all times to reduce this risk.

NOTICE

If you are not experienced with this type of machine, **WE STRONGLY RECOMMEND** that you seek additional training outside of this manual. Read books/magazines or get formal training before beginning any projects. Regardless of the content in this section, Grizzly Industrial will not be held liable for accidents caused by lack of training.

Basic Use & Care

!WARNING

You **MUST** assemble all guards, fences, and hold-downs before starting your machine or power feeder. Failure to heed this warning could result in amputation or death!

Power feeders reduce kickback hazards and improve cutting results by feeding in a consistent and stable manner. Remember, do not stand in the path of potential kickback.

When not in use, support the power feeder with a wooden block so the rubber wheels are raised above the table and do not compress from the weight of the power feeder.

The universal joints on this power feeder allow you to adjust the power feeder tracking and height to accommodate many workpiece sizes. Before loosening any lock lever, always support the power feeder with a block of wood, so the power feeder does not drop and cause damage.

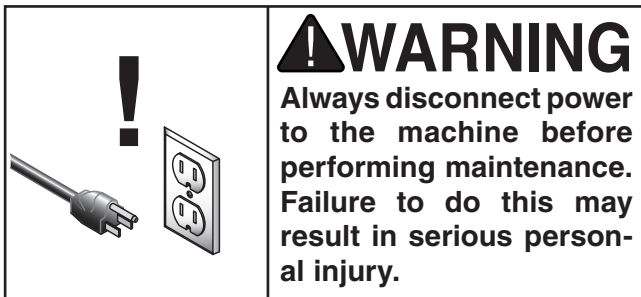
Adjust the power feeder so it is toed-in approximately 1° to 1.5° degrees towards the machine fence. This adjustment ensures the power feeder wheels slightly push the workpiece against the fence during cutting operations (**see Figure 8** on **Page 15**). A featherboard may be used on the infeed side to assist with feeding long or large stock.

Next, adjust the power feeder so the rubber wheels are parallel with the table surface, and are 1/8" lower than the thickness of your workpiece. This adjustment ensures that the workpiece will not slip or hang in the middle of a cut. Always double check that the power feeder wheels are 1/8" lower than the workpiece before you begin feeding operations. Otherwise, the workpiece may slip and kickback.



Changing Feed Speed

Your power feeder has the option to feed a workpiece at six different feed rates: 13, 18, 25, 30, 41, and 62 feet per minute. These rates are achieved by changing the combination of change gears in the power feeder gear box.



To change the feed rate of your power feeder:

1. Move the switch to the OFF position.
2. DISCONNECT MACHINE FROM POWER!
3. Refer to the change gear chart on the inside of the chain cover (see **Figure 12**) or the table (see **Figure 13**) to find the gear combination required for your chosen feed rate.

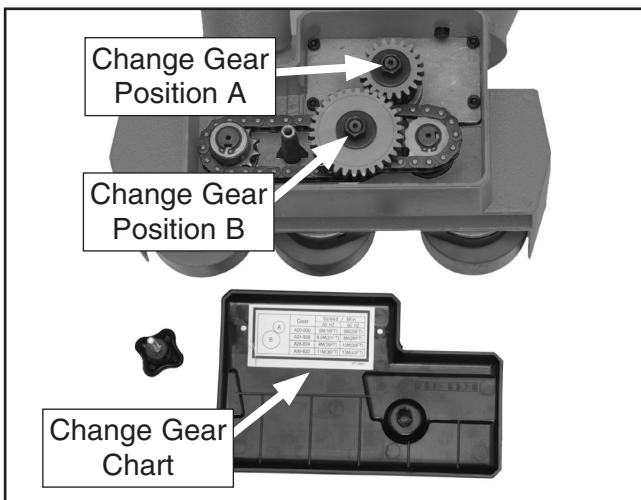


Figure 12. Change gear locations.

Installed Change Gears:

- A**, 20 Tooth + **B**, 30 Tooth = 18 Ft/Per Min
- A**, 30 Tooth + **B**, 20 Tooth = 41 Ft/Per Min

Included Accessory Change Gears:

- A**, 24 Tooth + **B**, 26 Tooth = 25 Ft/Per Min
- A**, 26 Tooth + **B**, 24 Tooth = 30 Ft/Per Min

Optional Model H3236 Slow Speed Kit Gears:

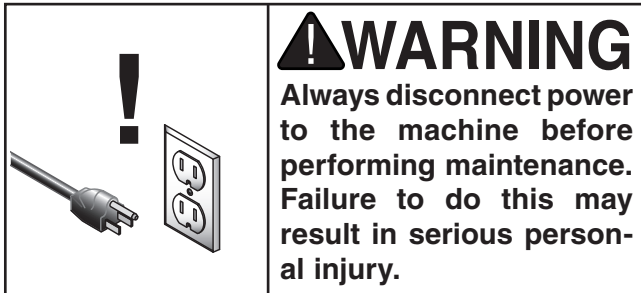
- A**, 16 Tooth + **B**, 34 Tooth = 13 Ft/Per Min
- A**, 34 Tooth + **B**, 16 Tooth = 62 Ft/Per Min

Figure 13. Change gear table.

4. Remove the chain cover and the two 14mm hex nuts securing the position **A** & **B** change gears to the shafts.
5. Swap the required gears in positions **A** & **B** shown in **Figure 12**.
6. Reinstall the hex nuts and the chain cover.



SECTION 5: MAINTENANCE



Schedule

For optimum performance from your machine, follow this maintenance schedule and refer to any specific instructions given in this section.

Daily Check:

- Loose mounting bolts.
- Worn switch.
- Worn or damaged cords and plugs.
- Damaged wheel rubber.
- Any other condition that could hamper the safe operation of this machine.

Cleaning

Frequently blow-off sawdust with compressed air. This is especially important for the internal working parts and motor. Dust build-up around the motor is a sure way to decrease its life span. If the wheels become loaded up with pitch, oil, or other residues, wipe them clean using a clean rag and a mild solvent. Avoid touching the plastic or paint with mineral spirits or you may damage the surfaces.

Lubrication

- To prevent surface rust and binding, periodically clean and oil all lock lever and lead screw threads with a light machine oil.

- After the first 200 hours of use, or after the first month, change the gearbox oil with 3.5 fluid ounces of a good automotive grade 80-90W gear oil. For the remaining life of the power feeder, change the oil every 1000 hours, or every 6 months. **Note:** To drain the unit, remove the fill plug labeled "OIL" and invert the power feeder.
- Every 40 hours of use, or once every two weeks, wipe clean and lubricate the wheel grease fittings (see Figure 14) with one pump from a grease gun filled with automotive grade GL-2 grease.



Figure 14. Wheel lubrication.

- As required to prevent rust, binding, and dry spots, brush the sprockets, chain, and change gears (see Figure 15) with a light film of an automotive grade GL-2 grease.

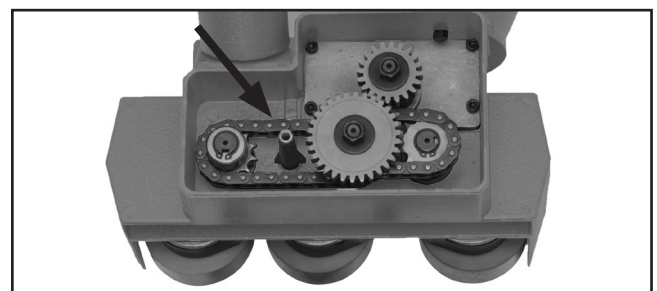


Figure 15. Sprockets, chain, and change gears.



SECTION 6: ACCESSORIES

⚠ WARNING

Installing unapproved accessories may cause machine to malfunction, resulting in serious personal injury or machine damage. To reduce this risk, only install accessories recommended for this machine by Grizzly.

NOTICE

Refer to our website or latest catalog for additional recommended accessories.

D3122—SHOP FOX® Push Stick

Measuring 13½" overall, this push stick allows the operator to keep their hands at a safe distance away from the blade or cutter.

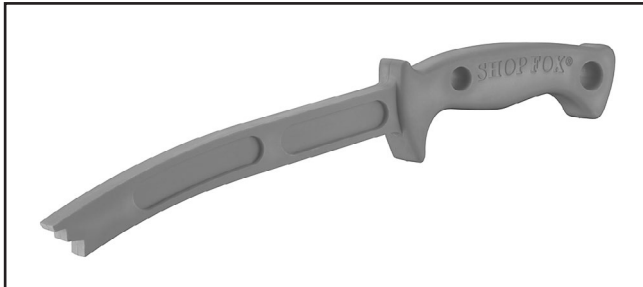


Figure 16. D3122 SHOP FOX® Push Stick.

D3096—SHOP FOX® Featherboard

Designed to lock into a standard ⅜" x ¾" miter slot, this featherboard is fully adjustable to accommodate a wide range of workpieces. Reduce the likelihood of kickback with this convenient accessory.



Figure 17. D3096 SHOP FOX® Featherboard.

G4177—Synthetic Rubber Roller for G4176

1⅛" wide x 3⅛" diameter rubber rollers are made from synthetic rubber.

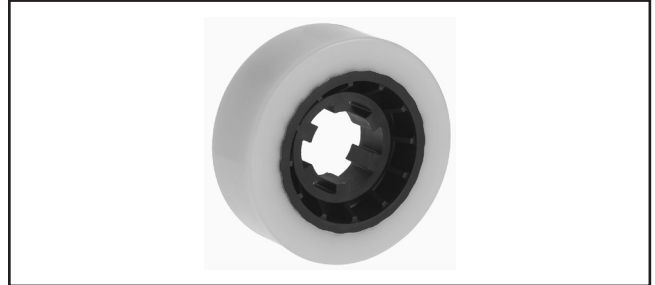


Figure 18. G4177 Synthetic Rubber Roller.

H3236—Slow Speed Kit for G4176

Increases speed range from 13 – 62 FPM, resulting in a slower feed rate desirable for some applications.

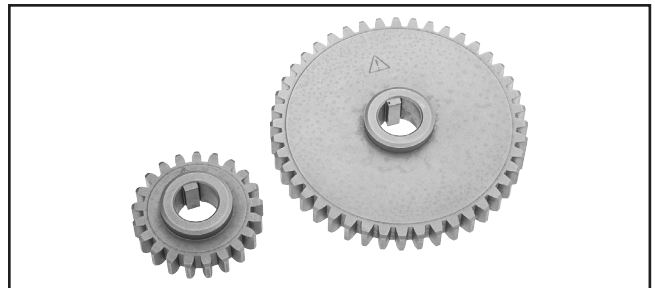


Figure 19. H3236 Quick Slow Speed Kit.

G4175—Quick Holder

This universal Quick Holder allows you to mount just about any power feeder to your machine table without drilling holes. Sturdy clamping system securely attaches to any machine table. Fits Model G4173, G4176 and H0796.



Figure 20. G4175 Quick Holder.

order online at www.grizzly.com or call 1-800-523-4777



G9766—29 Pc. HSS Drill & Tap Set – Metric

Have you ever needed a metric tap and then learn you don't have the right drill bit for it? We offer a set of taps with all the drill bits necessary to produce perfectly tapped holes. Each size has 3 taps which include a starting taper tap, a secondary intermediate tap and a finishing bottom tap. These are great taps for those hard to tap materials. Sizes: M3-0.5, M4-0.7, M5-0.8, M6-1.0, M8-1.25, M10-1.5, M12-1.75.



Figure 21. G9766 Metric HSS Drill & Tap Set.

H1412—4 oz. Cutting & Tapping Fluid

This cutting and tapping fluid is non-ozone depleting and is safe on aluminum and exotic alloys such as stainless steel, hastelloy, inconel and titanium. The engineered formula lubrication during cutting and tapping.



Figure 22. H1412 Cutting & Tapping Fluid.

T20501—Face Shield Crown Protector 4"

T20502—Face Shield Crown Protector 7"

T20503—Face Shield Window

T20451—"Kirova" Clear Safety Glasses

T20452—"Kirova" Anti-Reflective S. Glasses

H7194—Bifocal Safety Glasses 1.5

H7195—Bifocal Safety Glasses 2.0

H7196—Bifocal Safety Glasses 2.5



Figure 23. Eye protection assortment.

H2499—Small Half-Mask Respirator

H3631—Medium Half-Mask Respirator

H3632—Large Half-Mask Respirator

H3635—Cartridge Filter Pair P100

Wood dust has been linked to nasal cancer and severe respiratory illnesses. If you work around-dust everyday, a half-mask respirator can be a lifesaver. Also compatible with safety glasses!



Figure 24. Half-mask respirator with disposable cartridge filters.

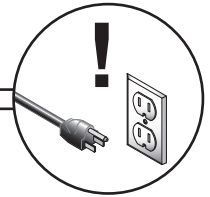
order online at www.grizzly.com or call 1-800-523-4777



SECTION 7: SERVICE

Review the troubleshooting and procedures in this section to fix or adjust your machine if a problem develops. If you need replacement parts or you are unsure of your repair skills, then feel free to call our Technical Support at (570) 546-9663.

Troubleshooting

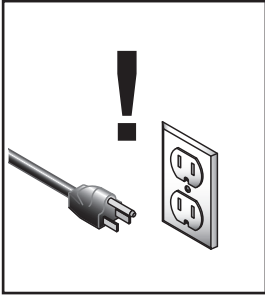


Motor & Electrical

Symptom	Possible Cause	Possible Solution
Motor will not start.	<ol style="list-style-type: none"> 1. Low voltage. 2. Open circuit in motor or loose connections. 3. Blown fuse tripped circuit breaker. 4. Capacitor at fault. 5. Motor switch or motor is at fault. 	<ol style="list-style-type: none"> 1. Check power supply for proper voltage. 2. Inspect all lead connections on motor and circuit board for loose or open connections. 3. Repair for cause of overload and replace fuse or reset circuit breaker. 4. Replace capacitor. 5. Replace switch, or motor.
Fuses or circuit breakers trip.	<ol style="list-style-type: none"> 1. Short circuit in line cord or plug. 2. Short circuit in motor or loose connections. 3. Power feeder rollers are jammed. 	<ol style="list-style-type: none"> 1. Inspect cord or plug for damaged insulation and shorted wires and replace extension cord. 2. Inspect all connections on motor for loose or shorted terminals or worn insulation. 3. Disconnect all machinery from power and correct for cause of jamming.
Motor overheats.	<ol style="list-style-type: none"> 1. Motor overloaded. 2. Air circulation through the motor restricted. 	<ol style="list-style-type: none"> 1. Reduce power feeder feed rate. 2. Clean out motor fan cover to provide normal air circulation.
Workpiece jams when feeding under rollers.	<ol style="list-style-type: none"> 1. Rollers set too low. 2. Feeder at wrong angle. 	<ol style="list-style-type: none"> 1. Raise feeder. 2. Adjust angle.
Workpiece slips while passing beneath rollers.	<ol style="list-style-type: none"> 1. Rollers positioned too high, no traction. 2. Feeding too fast. 3. Rollers are dirty or oily. 4. Worn roller(s). 	<ol style="list-style-type: none"> 1. Lower feeder. 2. Slow feed speed. 3. Clean roller surface with a mild solvent. 4. Replace roller(s) (Page 24).
Workpiece cut is burnt.	<ol style="list-style-type: none"> 1. Wrong feed speed. 2. Cutter is at fault. 	<ol style="list-style-type: none"> 1. Adjust feed speed. 2. Sharpen or replace dull blade or cutter.
Rough finish or chipped grain on workpiece.	<ol style="list-style-type: none"> 1. Feed speed too fast. 2. Dull cutter or blade. 3. Power feeder angle is not toed in to keep workpiece against the fence. 	<ol style="list-style-type: none"> 1. Slow speed. 2. Replace with sharp cutter or blade. 3. Adjust power feeder so it is toed-in 1° to 1.5° toward the fence.
Fuzzy grain occurs when planing or moulding.	<ol style="list-style-type: none"> 1. Lumber has high moisture content. 2. Dull knives/cutter. 	<ol style="list-style-type: none"> 1. If moisture content is higher than 20%, sticker and allow to dry. 2. Sharpen or replace knives.
Workpiece hangs and does not enter the machine.	<ol style="list-style-type: none"> 1. Power feeder roller height is set incorrectly. 	<ol style="list-style-type: none"> 1. Lower the power feeder roller 1/8" lower than the height of the workpiece.



Wheel Replacement

	<p>! WARNING Always disconnect power to the machine before performing maintenance. Failure to do this may result in serious personal injury.</p>
---	---

If you damage one or more wheels or they are worn, you can easily replace the wheels.

Tools Needed	Qty
• Hex Wrench 5mm.....	1

To replace a wheel:

1. DISCONNECT MACHINE FROM POWER!
2. Using a 5mm hex wrench, remove the two wheel retaining cap screws (see Figure 25).

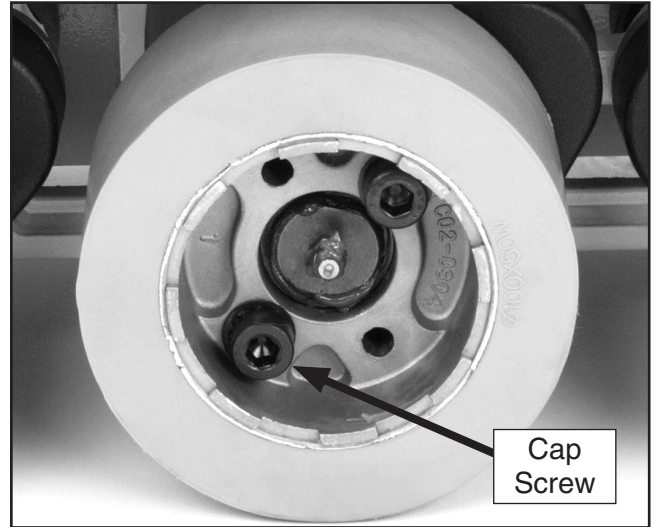


Figure 25. Wheel replacement.

3. Swap the old wheel with the new.
4. Reinstall the two cap screws, and tighten in an alternating pattern until the wheel is secure.



SECTION 8: WIRING

These pages are current at the time of printing. However, in the spirit of improvement, we may make changes to the electrical systems of future machines. Compare the manufacture date of your machine to the one stated in this manual, and study this section carefully.

If there are differences between your machine and what is shown in this section, call Technical Support at (570) 546-9663 for assistance BEFORE making any changes to the wiring on your machine. An updated wiring diagram may be available. **Note:** *Please gather the serial number and manufacture date of your machine before calling. This information can be found on the main machine label.*

WARNING

Wiring Safety Instructions

SHOCK HAZARD. Working on wiring that is connected to a power source is extremely dangerous. Touching electrified parts will result in personal injury including but not limited to severe burns, electrocution, or death. Disconnect the power from the machine before servicing electrical components!

MODIFICATIONS. Modifying the wiring beyond what is shown in the diagram may lead to unpredictable results, including serious injury or fire. This includes the installation of unapproved after-market parts.

WIRE CONNECTIONS. All connections must be tight to prevent wires from loosening during machine operation. Double-check all wires disconnected or connected during any wiring task to ensure tight connections.

CIRCUIT REQUIREMENTS. You MUST follow the requirements at the beginning of this manual when connecting your machine to a power source.

WIRE/COMPONENT DAMAGE. Damaged wires or components increase the risk of serious personal injury, fire, or machine damage. If you notice that any wires or components are damaged while performing a wiring task, replace those wires or components.

MOTOR WIRING. The motor wiring shown in these diagrams is current at the time of printing but may not match your machine. If you find this to be the case, use the wiring diagram inside the motor junction box.
















CAPACITORS/INVERTERS. Some capacitors and power inverters store an electrical charge for up to 10 minutes after being disconnected from the power source. To reduce the risk of being shocked, wait at least this long before working on capacitors.

EXPERIENCING DIFFICULTIES. If you are experiencing difficulties understanding the information included in this section, contact our Technical Support at (570) 546-9663.

NOTICE

The photos and diagrams included in this section are best viewed in color. You can view these pages in color at www.grizzly.com.

COLOR KEY

BLACK		BLUE		YELLOW		LIGHT BLUE	
WHITE		BROWN		YELLOW GREEN		BLUE WHITE	
GREEN		GRAY		PURPLE		TURQUOISE	
RED		ORANGE		PINK			



Wiring Diagram

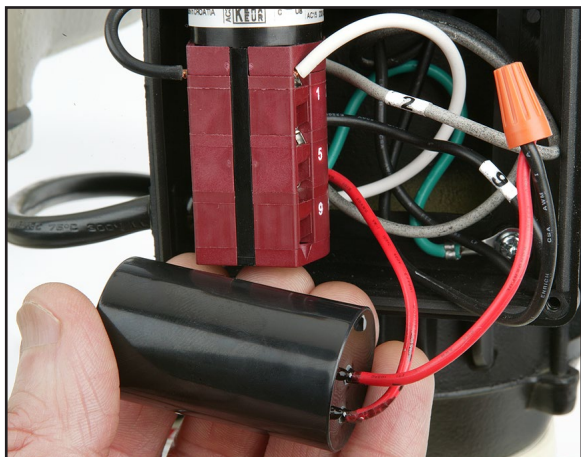
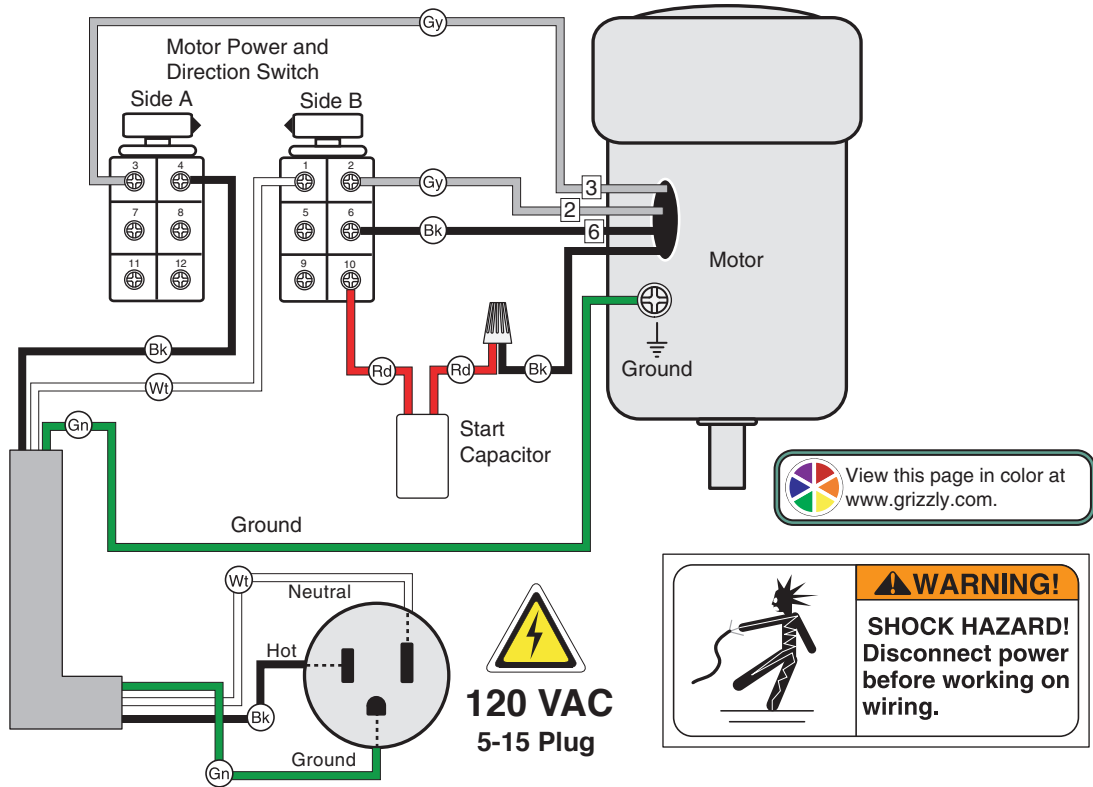


Figure 26. Motor capacitor.

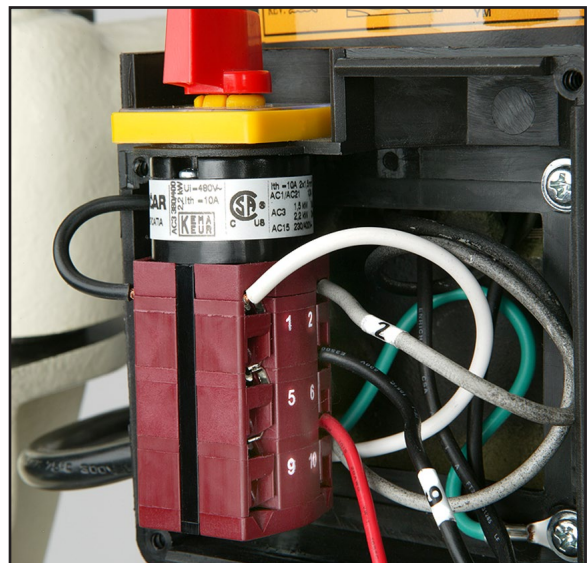


Figure 27. Motor power and direction switch.



Main Parts List

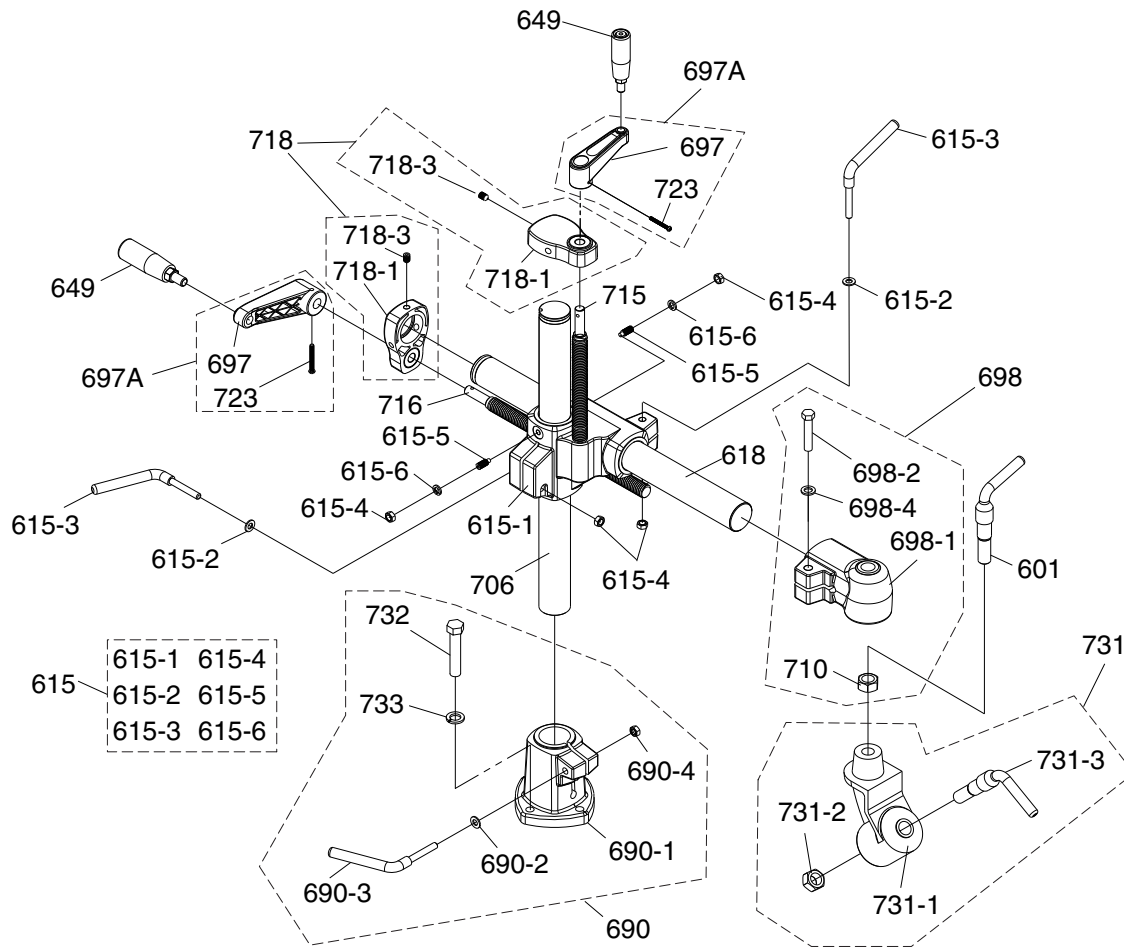
REF	PART #	DESCRIPTION
501	P4176501	RUBBER WHEEL 80 X 30
502	P4176502	GEAR COVER
503	P4176503	SWITCH ASSEMBLY 1/4HP
504	P4176504	KNOB BOLT M6-1 X 30
505	P4176505	SPROCKET BUSHING
506	P4176506	HEX BOLT M6-1 X 20
508	P4176508	FLAT WASHER 6MM
509	P4176509	QC LABEL
510	P4176510	SWITCH BOX ASSEMBLY
511	P4176511	MOTOR 1/4HP 110V 1-PH
511-1	P4176511-1	MOTOR FAN
511-2	P4176511-2	MOTOR FAN COVER
511-3	P4176511-3	R CAPACITOR 20M 250V 1-3/8 X 2
512	P4176512	SEAL 25 X 42 X 7T
513	P4176513	GEAR 24T
514	P4176514	GEAR 26T
516	P4176516	GEAR SET 24T/26T
517	P4176517	GEAR 20T
518	P4176518	GENERAL WARNING LABEL
530	P4176530	DOMED GRIZZLY LABEL
531	P4176531	COVER/SWITCH/ELECTRICITY LABEL
532	P4176532	CHAIN 22-LINKS
533	P4176533	LOCK WASHER 6MM
537	P4176537	CHAIN 30-LINKS
538	P4176538	BUSHING
539	P4176539	SPROCKET SET 12T/12T
539-1	P4176539-1	SPROCKET 12T
540	P4176540	SPROCKET 12T X 3/8"
541	P4176541	BUSHING 29 X 37 X (7 + 3)
542	P4176542	WORM GEAR SHAFT ASSEMBLY
542-1	P4176542-1	WORM GEAR SHAFT
542-2	P4176542-2	FLAT WASHER 3/8
542-3	P4176542-3	HEX NUT M10-1.5
543A	P4176543A	FRAME ASSEMBLY
543	P4176543	FRAME
546	P4176546	WORM GEAR BOX COVER ASSEMBLY
546-1	P4176546-1	WORM COVER GASKET
546-2	P4176546-2	BUSHING 29D X (23D X 15 X 3)

REF	PART #	DESCRIPTION
546-3	P4176546-3	WORM COVER
546-4	P4176546-4	OIL SEAL 17 X 32 X 7
546-5	P4176546-5	CAP SCREW M5-.8 X 12
549A	P4176549A	GEAR SET 20T/30T
549	P4176549	GEAR 30T
550	P4176050	HEX NUT M10-1.5
552	P4176052	FLAT WASHER 3/8
553	P4176553	EXT RETAINING RING 15MM
556	P4176556	EXT RETAINING RING 22MM
557	P4176557	TUBE
558	P4176558	CHAIN 18-LINKS
559	P4176059	EXT RETAINING RING 26MM
560	P4176560	CAP SCREW M6-1 X 25
569	P4176569	SPROCKET SHAFT ASSY W/O THREADS
569-1	P4176569-1	SPROCKET SHAFT W/O THREADS
569-2	P4176569-2	SPROCKET 8T
569-3	P4176569-3	E-CLIP 14MM
570	P4176570	SPROCKET SHAFT ASSY W/THREADS
570-1	P4176570-1	SPROCKET SHAFT W/THREADS
570-2	P4176570-2	SPROCKET 8T
570-3	P4176570-3	E-CLIP 14MM
571	P4176571	SPROCKET SHAFT ASSEMBLY
571-1	P4176571-1	GREASE FITTING M6-1 X 5
571-2	P4176571-2	SPROCKET SHAFT
571-3	P4176571-3	LOCK WASHER 8MM
571-4	P4176571-4	HEX NUT M8-1.25
580	P4176580	OIL CAP ASSEMBLY
580-1	P4176580-1	OIL CAP 16MM
580-2	P4176580-2	O-RING 11.8 X 2.4 P12
585	P4176585	SPROCKET CASE ASSEMBLY
585-1	P4176585-1	SPROCKET CASE
585-2	P4176585-2	TORSION SPRING 30 X 6
585-3	P4176585-3	CASE COVER
596A	P4176596A	ROLLER SPROCKET ASSEMBLY
596	P4176596	ROLLER SPROCKET 13T
598	P4176598	LUBRICATION LABEL
599	P4176599	TRANSMISSION ASSEMBLY

Please Note: We do our best to stock replacement parts whenever possible, but we cannot guarantee that all parts shown here are available for purchase. Call (800) 523-4777 or visit our online parts store at www.grizzly.com to check for availability.



Base Breakdown



REF	PART #	DESCRIPTION
601	P4176601	LEVER M6-1
615	P4176615	ELEVATING BRACKET ASSEMBLY
615-1	P4176615-1	ELEVATING BRACKET
615-2	P4176615-2	FLAT WASHER 8MM
615-3	P4176615-3	LEVER M8-1.25
615-4	P4176615-4	HEX NUT M8-1.25
615-5	P4176615-5	SET SCREW M8-1.25 X 20 DOG-PT
615-6	P4176615-6	LOCK WASHER 8MM
618	P4176618	OVER ARM SHAFT
649	P4176649	HANDLE M10-1.5 X 70
690	P4176690	BASE ASSEMBLY
690-1	P4176690-1	BASE
690-2	P4176690-2	FLAT WASHER 8MM
690-3	P4176690-3	LEVER M8-1.25
690-4	P4176690-4	HEX NUT M8-1.25
697A	P4176697A	HANDLE ASSEMBLY
697	P4176697	HAND CRANK
698	P4176698	OVER ARM CONE ASSEMBLY

REF	PART #	DESCRIPTION
698-1	P4176698-1	OVER ARM CONE
698-2	P4176698-2	HEX BOLT M10-1.5 X 50
698-4	P4176698-4	LOCK WASHER 10MM
706	P4176706	ELEVATING SHAFT
710	P4176710	HEX NUT M16-2
715	P4176715	ELEVATING SCREW
716	P4176716	LEADSCREW
718	P4176718	COLUMN CAP ASSEMBLY
718-1	P4176718-1	COLUMN CAP
718-3	P4176718-3	SET SCREW M8-1.25 X 10
723	P4176723	PHLP HD SCR M4-.7 X 35
731	P4176731	SWIVEL CONE ASSEMBLY
731-1	P4176731-1	SWIVEL CONE
731-2	P4176731-2	HEX NUT M16-2
731-3	P4176731-3	LEVER M16-2
732	P4176732	HEX BOLT M10-1.5 X 50
733	P4176733	LOCK WASHER 10MM





WARRANTY CARD

Name _____
 Street _____
 City _____ State _____ Zip _____
 Phone # _____ Email _____
 Model # _____ Order # _____ Serial # _____

The following information is given on a voluntary basis. It will be used for marketing purposes to help us develop better products and services. **Of course, all information is strictly confidential.**

1. How did you learn about us?

Advertisement Friend Catalog
 Card Deck Website Other:

2. Which of the following magazines do you subscribe to?

<input type="checkbox"/> Cabinetmaker & FDM	<input type="checkbox"/> Popular Science	<input type="checkbox"/> Wooden Boat
<input type="checkbox"/> Family Handyman	<input type="checkbox"/> Popular Woodworking	<input type="checkbox"/> Woodshop News
<input type="checkbox"/> Hand Loader	<input type="checkbox"/> Precision Shooter	<input type="checkbox"/> Woodsmith
<input type="checkbox"/> Handy	<input type="checkbox"/> Projects in Metal	<input type="checkbox"/> Woodwork
<input type="checkbox"/> Home Shop Machinist	<input type="checkbox"/> RC Modeler	<input type="checkbox"/> Woodworker West
<input type="checkbox"/> Journal of Light Cont.	<input type="checkbox"/> Rifle	<input type="checkbox"/> Woodworker's Journal
<input type="checkbox"/> Live Steam	<input type="checkbox"/> Shop Notes	<input type="checkbox"/> Other:
<input type="checkbox"/> Model Airplane News	<input type="checkbox"/> Shotgun News	
<input type="checkbox"/> Old House Journal	<input type="checkbox"/> Today's Homeowner	
<input type="checkbox"/> Popular Mechanics	<input type="checkbox"/> Wood	

3. What is your annual household income?

\$20,000-\$29,000 \$30,000-\$39,000 \$40,000-\$49,000
 \$50,000-\$59,000 \$60,000-\$69,000 \$70,000+

4. What is your age group?

20-29 30-39 40-49
 50-59 60-69 70+

5. How long have you been a woodworker/metalworker?

0-2 Years 2-8 Years 8-20 Years 20+ Years

6. How many of your machines or tools are Grizzly?

0-2 3-5 6-9 10+

7. Do you think your machine represents a good value? Yes No

8. Would you recommend Grizzly Industrial to a friend? Yes No

9. Would you allow us to use your name as a reference for Grizzly customers in your area?

Note: We never use names more than 3 times. Yes No

10. Comments: _____

CUT ALONG DOTTED LINE

FOLD ALONG DOTTED LINE



Place
Stamp
Here



GRIZZLY INDUSTRIAL, INC.
P.O. BOX 2069
BELLINGHAM, WA 98227-2069



FOLD ALONG DOTTED LINE

Send a Grizzly Catalog to a friend:

Name _____
Street _____
City _____ State _____ Zip _____

TAPE ALONG EDGES--PLEASE DO NOT STAPLE

WARRANTY & RETURNS

Grizzly Industrial, Inc. warrants every product it sells for a period of **1 year** to the original purchaser from the date of purchase. This warranty does not apply to defects due directly or indirectly to misuse, abuse, negligence, accidents, repairs or alterations or lack of maintenance. This is Grizzly's sole written warranty and any and all warranties that may be implied by law, including any merchantability or fitness, for any particular purpose, are hereby limited to the duration of this written warranty. We do not warrant or represent that the merchandise complies with the provisions of any law or acts unless the manufacturer so warrants. In no event shall Grizzly's liability under this warranty exceed the purchase price paid for the product and any legal actions brought against Grizzly shall be tried in the State of Washington, County of Whatcom.

We shall in no event be liable for death, injuries to persons or property or for incidental, contingent, special, or consequential damages arising from the use of our products.

To take advantage of this warranty, contact us by mail or phone and give us all the details. We will then issue you a "Return Number," which must be clearly posted on the outside as well as the inside of the carton. We will not accept any item back without this number. Proof of purchase must accompany the merchandise.

The manufacturers reserve the right to change specifications at any time because they constantly strive to achieve better quality equipment. We make every effort to ensure that our products meet high quality and durability standards and we hope you never need to use this warranty.

Please feel free to write or call us if you have any questions about the machine or the manual.

Thank you again for your business and continued support. We hope to serve you again soon.

grizzly.com[®]

TOOL WEBSITE

Buy Direct and Save with Grizzly[®] – Trusted, Proven and a Great Value!
~Since 1983~

*Visit Our Website Today For
Current Specials!*

**ORDER
24 HOURS A DAY!
1-800-523-4777**

