

# *Grizzly* **Industrial, Inc.**®

## MODEL G0472/G0473/G0476 SANDBLASTING CABINET OWNER'S MANUAL



COPYRIGHT © OCTOBER, 2005 BY GRIZZLY INDUSTRIAL, INC. REVISED OCTOBER, 2010(TR)

**WARNING: NO PORTION OF THIS MANUAL MAY BE REPRODUCED IN ANY SHAPE  
OR FORM WITHOUT THE WRITTEN APPROVAL OF GRIZZLY INDUSTRIAL, INC.**

#CR7568 PRINTED IN CHINA

 **WARNING!**

**This manual provides critical safety instructions on the proper setup, operation, maintenance and service of this machine/equipment.**

**Failure to read, understand and follow the instructions given in this manual may result in serious personal injury, including amputation, electrocution or death.**

**The owner of this machine/equipment is solely responsible for its safe use. This responsibility includes but is not limited to proper installation in a safe environment, personnel training and usage authorization, proper inspection and maintenance, manual availability and comprehension, application of safety devices, blade/cutter integrity, and the usage of personal protective equipment.**

**The manufacturer will not be held liable for injury or property damage from negligence, improper training, machine modifications or misuse.**

 **WARNING!**

**Some dust created by power sanding, sawing, grinding, drilling, and other construction activities contains chemicals known to the State of California to cause cancer, birth defects or other reproductive harm. Some examples of these chemicals are:**

- **Lead from lead-based paints.**
- **Crystalline silica from bricks, cement and other masonry products.**
- **Arsenic and chromium from chemically-treated lumber.**

**Your risk from these exposures varies, depending on how often you do this type of work. To reduce your exposure to these chemicals: Work in a well ventilated area, and work with approved safety equipment, such as those dust masks that are specially designed to filter out microscopic particles.**

# Table of Contents

- INTRODUCTION..... 2**
  - Manual Accuracy..... 2
  - Contact Info..... 2
  - Machine Data Sheet..... 3
- SECTION 1: SAFETY..... 4**
  - Safety Instructions for Machinery..... 4
  - Additional Safety Instructions for Sandblasters ..... 6
- SECTION 2: SET UP ..... 7**
  - Set Up Safety ..... 7
  - Items Needed for Set Up ..... 7
  - Unpacking ..... 7
  - G0472 Assembly..... 8
  - G0473 Assembly..... 9
  - G0476 Assembly..... 10
- SECTION 3: OPERATIONS ..... 11**
  - Operation Safety ..... 11
  - Basic Operation..... 11
  - Abrasive Options..... 12
  - Nozzle/Jet Options ..... 12
  - Notes..... 13
- SECTION 4: PARTS..... 14**
  - Parts Breakdown (G0472)..... 14
  - Parts List (G0472)..... 15
  - Parts Breakdown (G0473)..... 16
  - Parts List (G0473)..... 17
  - Parts Breakdown (G0476)..... 18
  - Parts List (G0476)..... 19
- WARRANTY AND RETURNS ..... 20**

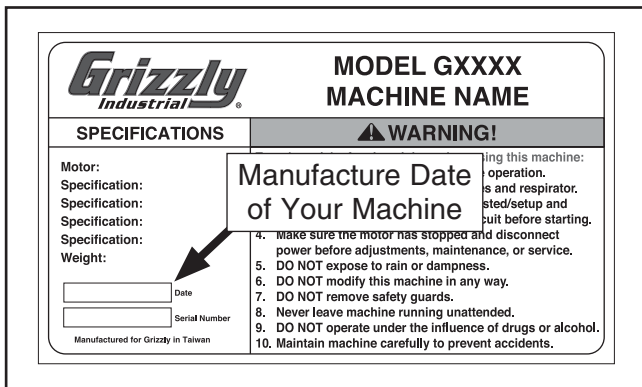
# INTRODUCTION

## Manual Accuracy

We are proud to offer this manual with your new machine! We've made every effort to be exact with the instructions, specifications, drawings, and photographs of the machine we used when writing this manual. However, sometimes we still make an occasional mistake.

Also, owing to our policy of continuous improvement, **your machine may not exactly match the manual**. If you find this to be the case, and the difference between the manual and machine leaves you in doubt, check our website for the latest manual update or call technical support for help.

Before calling, find the manufacture date of your machine by looking at the date stamped into the machine ID label (see below). This will help us determine if the manual version you received matches the manufacture date of your machine.



For your convenience, we post all available manuals and manual updates for free on our website at [www.grizzly.com](http://www.grizzly.com). Any updates to your model of machine will be reflected in these documents as soon as they are complete.

## Contact Info

We stand behind our machines. If you have any service questions, parts requests or general questions about the machine, please call or write us at the location listed below.

Grizzly Industrial, Inc.  
1203 Lycoming Mall Circle  
Muncy, PA 17756  
Phone: (570) 546-9663  
E-Mail: [techsupport@grizzly.com](mailto:techsupport@grizzly.com)

We want your feedback on this manual. If you can take the time, please email or write to us at the address below and tell us how we did:

Grizzly Industrial, Inc.  
c/o Technical Documentation Manager  
P.O. Box 2069  
Bellingham, WA 98227-2069  
Email: [manuals@grizzly.com](mailto:manuals@grizzly.com)





# MACHINE DATA SHEET

Customer Service #: (570) 546-9663 • To Order Call: (800) 523-4777 • Fax #: (800) 438-5901

## MODEL G0472 SANDBLASTING CABINET

Design Type ..... Floor Model

**General Specifications:**

Width ..... 36"

Height ..... 55"

Depth ..... 22¾"

Operating Air Pressure Range ..... 60-116 PSI

Recommended Air Supply ..... 5-25 CFM

Net Weight ..... 120 lbs

Abrasive Capacity ..... 40 lbs.

Abrasive Type ..... Dry Only

Lighting Type ..... 15 Watt Fluorescent

Load & Unload Access ..... Sides

Power Supply ..... 110VAC w/12VDC Transformer

## MODEL G0473 SANDBLASTING CABINET

Design Type ..... Benchtop Model

**General Specifications:**

Width ..... 24½"

Height ..... 21"

Depth ..... 19½"

Operating Air Pressure Range ..... 60-100 PSI

Recommended Air Supply ..... 5-14 CFM

Net Weight ..... 50 lbs

Abrasive Capacity ..... 10 lbs.

Abrasive Type ..... Dry Only

Lighting Type ..... 15 Watt Fluorescent

Load & Unload Access ..... Sides

Power Supply ..... 110VAC w/12VDC Transformer

## MODEL G0476 SANDBLASTING CABINET

Design Type ..... Benchtop Model

**General Specifications:**

Width ..... 22¾"

Height ..... 19"

Depth ..... 19"

Operating Air Pressure Range ..... 60-100 PSI

Recommended Air Supply ..... 5-14 CFM

Net Weight ..... 50 lbs

Abrasive Capacity ..... 10 lbs.

Abrasive Type ..... Dry Only

Lighting Type ..... 15 Watt Fluorescent

Load & Unload Access ..... Top

Power Supply ..... 110VAC w/12VDC Transformer

*Specifications, while deemed accurate, are not guaranteed.*



# SECTION 1: SAFETY

## **WARNING**

### **For Your Own Safety, Read Instruction Manual Before Operating this Machine**

The purpose of safety symbols is to attract your attention to possible hazardous conditions. This manual uses a series of symbols and signal words intended to convey the level of importance of the safety messages. The progression of symbols is described below. Remember that safety messages by themselves do not eliminate danger and are not a substitute for proper accident prevention measures.



Indicates an imminently hazardous situation which, if not avoided, **WILL** result in death or serious injury.



Indicates a potentially hazardous situation which, if not avoided, **COULD** result in death or serious injury.



Indicates a potentially hazardous situation which, if not avoided, **MAY** result in minor or moderate injury. It may also be used to alert against unsafe practices.

***NOTICE***

This symbol is used to alert the user to useful information about proper operation of the machine.

## **WARNING**

### **Safety Instructions for Machinery**

**OWNER'S MANUAL.** Read and understand this owner's manual **BEFORE** using machine. Untrained users can be seriously hurt.

**EYE PROTECTION.** Always wear ANSI-approved safety glasses or a face shield when operating or observing machinery. to reduce the risk of eye injury or blindness from flying particles Everyday eyeglasses are not approved safety glasses.

**HAZARDOUS DUST.** Dust created while using machinery may cause cancer, birth defects, or long-term respiratory damage. Be aware of dust hazards associated with each workpiece material, and always wear a NIOSH-approved respirator to reduce your risk.

**WEARING PROPER APPAREL.** Do not wear clothing, apparel, or jewelry that can become entangled in moving parts. Always tie back or cover long hair. Wear non-slip footwear to avoid accidental slips which could cause a loss of workpiece control.

**HEARING PROTECTION.** Always wear hearing protection when operating or observing loud machinery. Extended exposure to this noise without hearing protection can cause permanent hearing loss.

**MENTAL ALERTNESS.** Be mentally alert when running machinery. Never operate under the influence of drugs or alcohol, when tired, or when distracted.



# WARNING

## Safety Instructions for Machinery

**DISCONNECTING POWER SUPPLY.** Always disconnect machine from power supply before servicing, adjusting, or changing cutting tools (bits, blades, cutters, etc.). Make sure switch is in OFF position before reconnecting to avoid an unexpected or unintentional start.

**INTENDED USE.** Only use the machine for its intended purpose and only use recommended accessories. Never stand on machine, modify it for an alternative use, or outfit it with non-approved accessories.

**STABLE MACHINE.** Unexpected movement during operations greatly increases the risk of injury and loss of control. Verify machines are stable/secure and mobile bases (if used) are locked before starting.

**FORCING MACHINERY.** Do not force machine. It will do the job safer and better at the rate for which it was designed.

**GUARDS & COVERS.** Guards and covers can protect you from accidental contact with moving parts or flying debris. Make sure they are properly installed, undamaged, and working correctly before using machine.

**REMOVING TOOLS.** Never leave adjustment tools, chuck keys, wrenches, etc. in or on machine—especially near moving parts. Verify removal before starting!

**AWKWARD POSITIONS.** Keep proper footing and balance at all times when operating machine. Do not overreach! Avoid awkward hand positions that make workpiece control difficult or increase the risk of accidental injury.

**DANGEROUS ENVIRONMENTS.** Do not use machinery in wet locations, cluttered areas, around flammables, or in poorly-lit areas. Keep work area clean, dry, and well lighted to minimize risk of injury.

**APPROVED OPERATION.** Untrained operators can be seriously hurt by machinery. Only allow trained or properly supervised people to use machine. When machine is not being used, disconnect power, remove switch keys, or lock-out machine to prevent unauthorized use—especially around children. Make workshop kid proof!

**CHILDREN & BYSTANDERS.** Keep children and bystanders a safe distance away from work area. Stop using machine if children or bystanders become a distraction.

**FEED DIRECTION.** Unless otherwise noted, feed work against the rotation of blades or cutters. Feeding in the same direction of rotation may pull your hand into the cut.

**SECURING WORKPIECE.** When required, use clamps or vises to secure workpiece. A secured workpiece protects hands and frees both of them to operate the machine.

**UNATTENDED OPERATION.** Never leave machine running while unattended. Turn machine **OFF** and ensure all moving parts completely stop before walking away.

**MAINTENANCE & INSPECTION.** A machine that is not properly maintained may operate unpredictably. Follow all maintenance instructions and lubrication schedules to keep machine in good working condition. Regularly inspect machine for loose bolts, alignment of critical parts, binding, or any other conditions that may affect safe operation. Always repair or replace damaged or mis-adjusted parts before operating machine.

**EXPERIENCING DIFFICULTIES.** If at any time you are experiencing difficulties performing the intended operation, stop using the machine! Contact our Technical Support Department at (570) 546-9663.



## **WARNING**

# Additional Safety Instructions for Sandblasters

- 1. CORRECT ABRASIVES.** Never use wet abrasives in this sandblaster, it is designed for dry abrasives only.
- 2. PROTECTING LUNGS.** Make sure that you always use a respirator when using or cleaning the sandblaster.
- 3. LEAVING THE AREA.** Always disconnect air supply when leaving the sandblaster.
- 4. PROTECTING EYES.** Make sure that you always use safety glasses when using or cleaning the sandblaster.
- 5. PROTECTING ENVIRONMENT.** Always close and latch shut the sandblaster doors when not in use.
- 6. WORK AREA SAFETY.** Clean dust collector and filters often, and repair any suction hose leaks immediately.
- 7. MAINTAINING COMPONENTS.** Prior to each use, inspect nozzles, hoses, lenses, and gloves. To reduce the risk of respiratory damage or sand penetrating skin, all components **MUST** be free of cracks, leaks, or unacceptable wear. Immediately replace worn or leaking components.
- 8. MAINTAINING MACHINE.** Check cabinet for any leaks, and reseal immediately.
- 9. SAFE SANDBLASTING.** Do not use system over the rated PSI. Always secure the door(s) before beginning sandblasting operations.
- 10. CORRECT LIGHTING.** Do not use a light that uses over 60 watts.
- 11. LOADING & UNLOADING.** Disconnect the air supply before loading or unloading the workpiece from the sandblaster cabinet.
- 12. SAFE MAINTENANCE.** Disconnect air supply and electrical before doing maintenance.

## **WARNING**

Like all machinery there is potential danger when operating this machine. Accidents are frequently caused by lack of familiarity or failure to pay attention. Use this machine with respect and caution to lessen the possibility of operator injury. If normal safety precautions are overlooked or ignored, serious personal injury may occur.

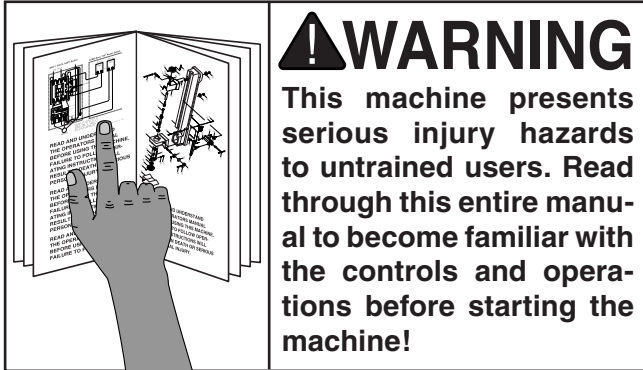
## **CAUTION**

No list of safety guidelines can be complete. Every shop environment is different. Always consider safety first, as it applies to your individual working conditions. Use this and other machinery with caution and respect. Failure to do so could result in serious personal injury, damage to equipment, or poor work results.



# SECTION 2: SET UP

## Set Up Safety



## Items Needed for Set Up

The following items are needed to complete the set up process, but are not included with your machine:

Description	Qty
• Phillips Screwdriver #2.....	1
• Standard Screwdriver #2.....	1
• Wrench 19mm.....	1
• Wrench 14mm.....	1
• Wrench 10mm.....	1
• Wrench 7mm.....	1

## Unpacking

The Model G0472/G0473/G0476 was carefully packed when it left our warehouse. If you discover the machine is damaged after you have signed for delivery, *please immediately call Customer Service at (570) 546-9663 for advice.*

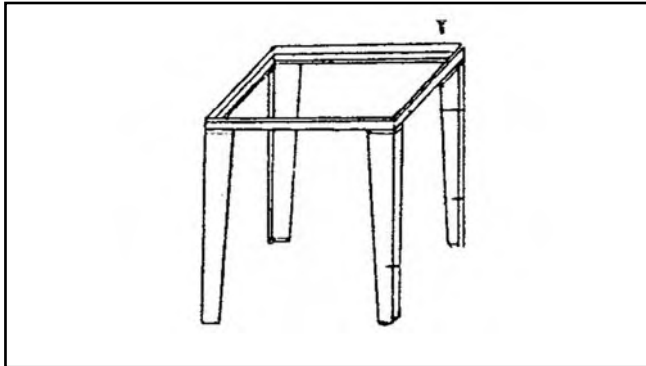
Save the containers and all packing materials for possible inspection by the carrier or its agent. *Otherwise, filing a freight claim can be difficult.*



# G0472 Assembly

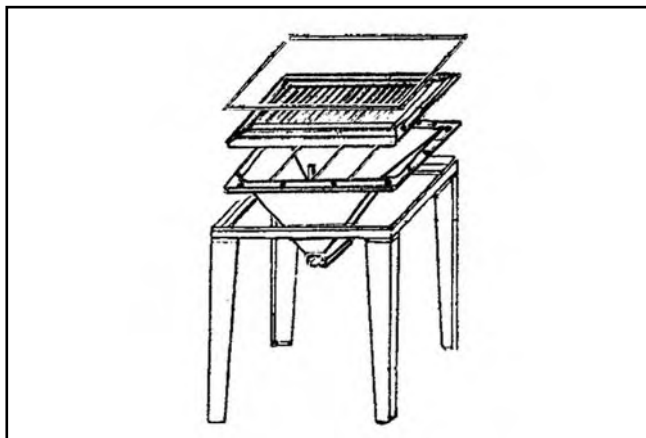
## To assemble the sandblaster:

1. Install the four legs onto the stand frame with 12 M6-1x20 screws and nuts (**Figure 1**).



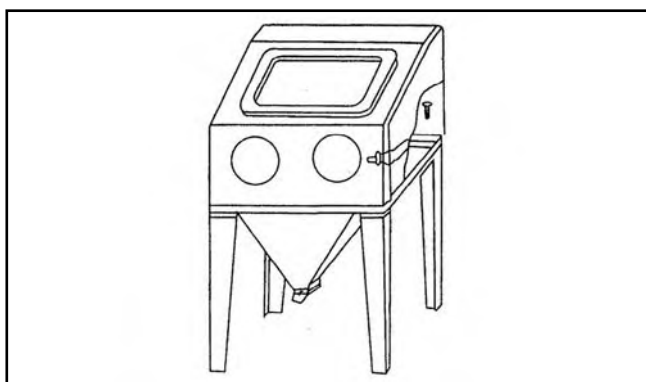
**Figure 1.** Stand frame.

2. Assemble the hopper assembly, the screen, and the adhesive foam gasket in the order shown (**Figure 2**).



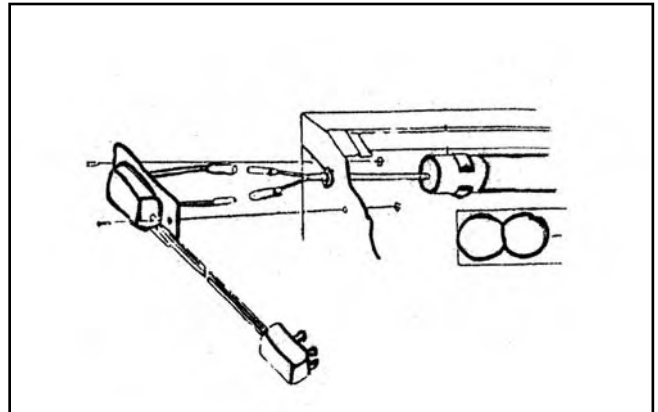
**Figure 2.** Hopper and screen assembly.

3. Set the cabinet onto the hopper and screen assembly, and secure it with (12) M6-1 x 40 screws and nuts (**Figure 3**).



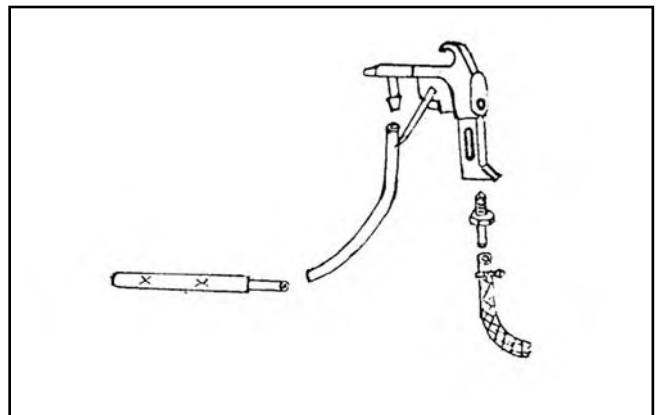
**Figure 3.** Cabinet and frame.

4. Install the lamp and wiring with the M4-0.7 x 10 screws, washers, and nuts. Use the zip-ties to lock the lamp to the two lamp supports (**Figure 4**).



**Figure 4.** Electrical installation.

5. Insert the air supply hose through the cabinet grommet, and assemble the gun as shown (**Figure 5**).



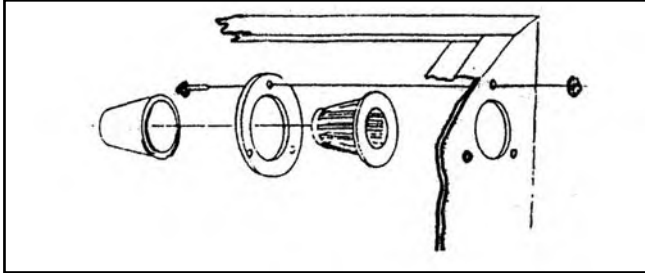
**Figure 5.** Gun assembly.



# G0473 Assembly

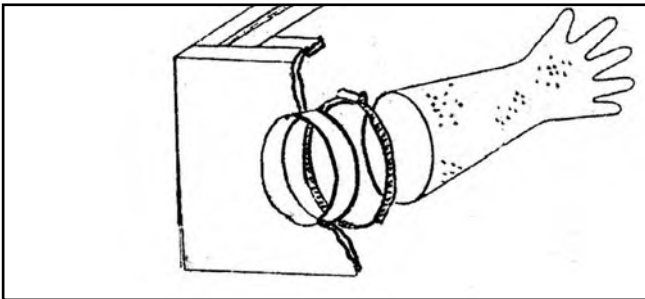
## To assemble the sandblaster:

1. Install the filter assembly with the screws and nuts (**Figure 1**).



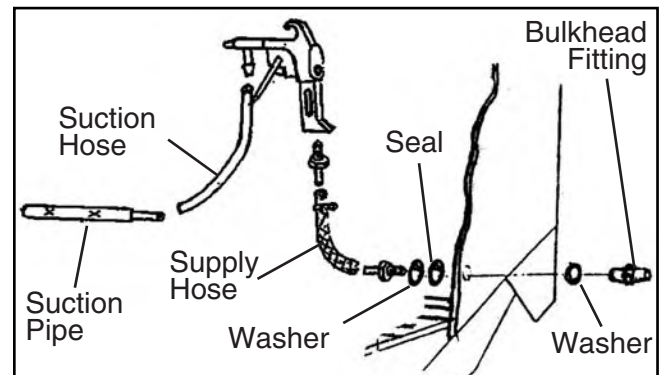
**Figure 1.** Filter installation.

2. Install the gloves as shown in **Figure 2**.



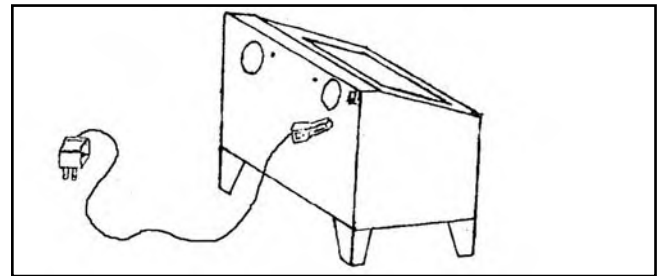
**Figure 2.** Glove installation.

3. Install the bulkhead fitting with gasket. Attach the air supply hose and suction hose to the bulkhead fittings and suction pipe with hose clamps (**Figure 3**).



**Figure 3.** Blast gun assembly.

4. Plug in the AC/DC adapter (**Figure 4**).



**Figure 4.** Light assembly.



# G0476 Assembly

## To assemble the sandblaster:

1. Install the two lamp holders with the two screws (Figure 1).

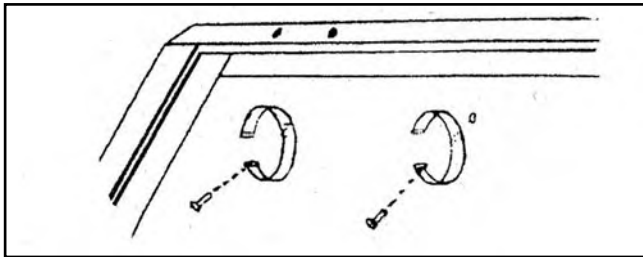


Figure 1. Lamp holder.

2. Connect the electrical wires and install the electrical box with the screws (Figure 2).

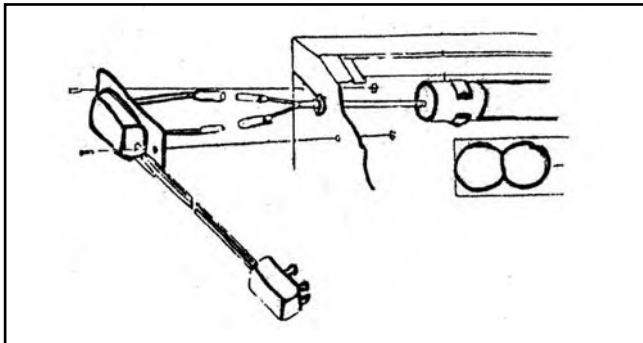


Figure 2. Light assembly.

3. Install the filter assembly with the screws and nuts (Figure 3).

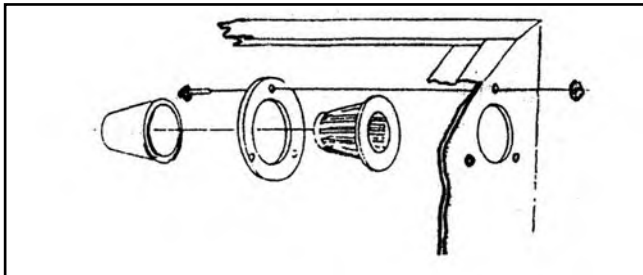


Figure 3. Filter installation.

4. Install the gloves as shown in Figure 4.

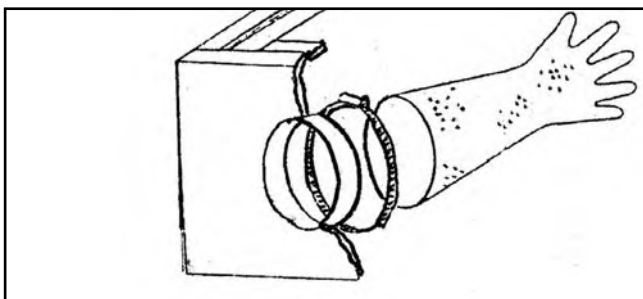


Figure 4. Glove installation.

5. Install window, hinges, lock latches, and the knob (Figure 5).

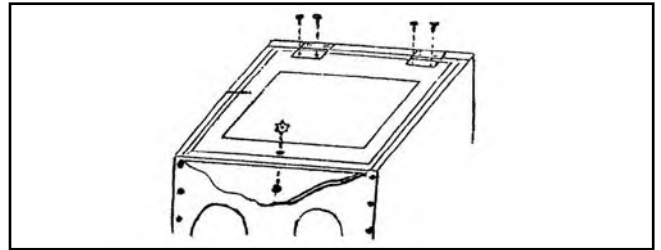


Figure 5. Hinge and knob assembly.

6. Install the chain to the window and cabinet with the screws and nuts (Figure 6).

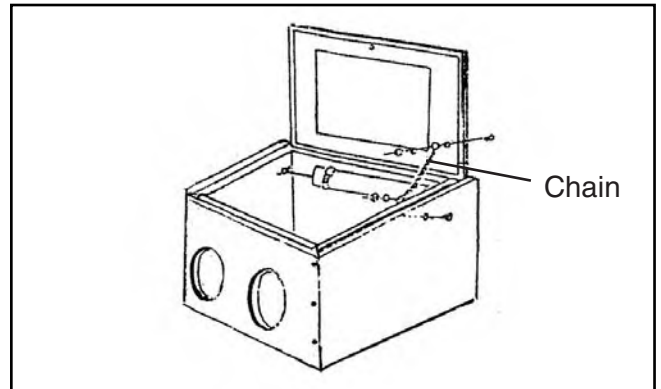


Figure 6. Window chain.

7. Install the bulkhead fitting with gasket. Attach the air supply hose and suction hose to the bulkhead fittings and suction pipe with hose clamps (Figure 7).

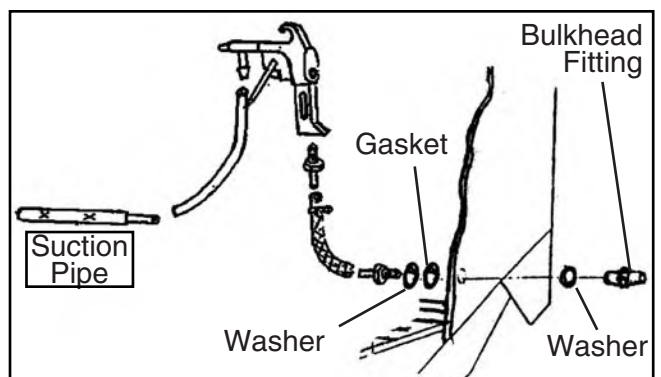


Figure 7. Blast gun assembly.

8. Plug in the AC/DC adapter (Figure 8).

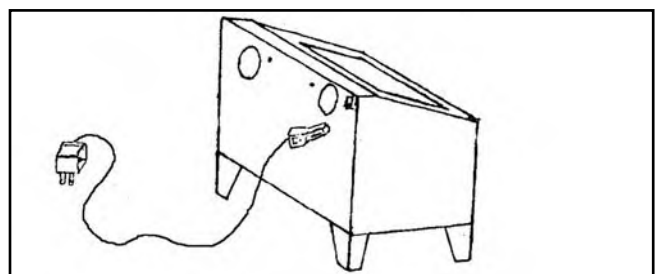


Figure 8. Light assembly.



# SECTION 3: OPERATIONS

## WARNING

Sandblasting presents a real hazard of silicosis and other lung contamination injuries! These injuries are permanent and can get worse over time. If you use sandblasting equipment without the proper protection, your lungs and eyes may become irreversibly contaminated. **DO NOT** use this sandblaster unless you know how to use it and protect yourself correctly. For types of protective equipment and acceptable respirator types, contact your local OSHA or NIOSH office.

## Operation Safety

### **NOTICE**

If you have never used this type of machine or equipment before, **WE STRONGLY RECOMMEND** that you read books, trade magazines, or get formal training before beginning any projects. Regardless of the content in this section, Grizzly Industrial will not be held liable for accidents caused by lack of training.

## Basic Operation

The Model G0472/G0473/G0476 Sandblasters are equipped with an industrial-duty blast gun with ceramic tip, a siphon hose, a built-in light, large viewing window, and sealed rubber gloves. The hopper recycles and stores the sandblasting media for reuse or easy removal. Safely blast away paint and rust without making a mess around your shop.

### To use the sandblaster:

1. **Wear safety glasses and respirator at all times when running and maintaining your sandblaster!**
2. Plug in the AC/DC transformer and turn **ON** the light.
3. Install the correct nozzle and air jet into the gun for the abrasive type you will use. Refer to **Page 12** for options.

4. Carefully, without causing a hazardous dust cloud, pour or spade-in the abrasive into the sandblaster. **DO NOT** over-fill or sandblasting will be sluggish and very cloudy inside of the cabinet.

–For Model G0472: Use 40 lbs of abrasive.  
–For Model G0473: Use 10 lbs of abrasive.  
–For Model G0476: Use 10 lbs of abrasive.

5. Insert the workpiece, and close and lock the loading door.

6. Adjust the air supply regulator to the correct air pressure.

–For Model G0472: Use 60-116 PSI at 8-25 CFM.  
–For Model G0473: Use 60-100 PSI at 5-14 CFM.  
–For Model G0476: Use 60-100 PSI at 5-14 CFM.

7. Turn **ON** your dust collection/vacuum system and air compressor insert your hands in the gloves, and begin sand blasting in a slow circular motion.

**Note:** A good starting point for tip distance is two inches away from the workpiece. Start out with a low air pressure setting to avoid excess peening and abrasive wear.

**Note:** Experiment with different pressures, abrasives, tips and jets to gain practical experience.

**Note:** Keep the sandblasting abrasives moisture-free, otherwise; the blast gun tip will frequently clog.



# Abrasive Options

---

## Blasting Media from Grizzly.Com

### PART #

**G6535:** 15 lbs. Aluminum Oxide 220 Grit.

**G6536:** 15 lbs. Aluminum Oxide 120 Grit.

**G6537:** 15 lbs. Aluminum Oxide 60 Grit.

**G6538:** 15 lbs. Glass Bead 50-Micron Grit.

Below is a basic introduction to some of the most common blasting abrasives. Refer to magazines, trade articles, professionals, and the abrasive manufacturer for the specific surfaces that can be addressed with a type of abrasive. All abrasives have benefits and drawbacks like quality of surface finish, abrasive life, toxicity, and what precautions you must take to prevent environmental damage or personal injury to your respiratory system.

## Steel Type Abrasives

This aggressive abrasive creates a rough finish that accepts paint well. The abrasive is very durable and has a long life, however; it **MUST** be kept very dry to prevent rusting.

## Alumina Type Abrasives

This multi-purpose abrasive creates a smoother finish than the steel abrasives, but has a shorter life span. Less of the workpiece surface is removed with this more forgiving abrasive.

## Glass and Garnet Type Abrasives

Typically this abrasive works well for soft metals and addressing surface issues with machine parts where tolerances cannot be affected. The life of this abrasive is limited and not well suited for repetitively recycling.

## Sand Type Abrasives

This abrasive is easy to find, and gives an average finish that is acceptable for most projects. Sand has a good recycling life and is very economical.

## Plastic Type Abrasives

Applied at low pressures of 30 to 50 PSI, plastic abrasives should be harder than the coating being removed, but softer than the workpiece to avoid damage. Plastic abrasive is excellent for addressing surface issues on aluminum, magnesium, copper, brass, thin steel, titanium, and composite surfaces and fiberglass.

## Other Types of Abrasives Available

Ground walnut or peanut shells.

Ground corn cob.

Sodium bicarbonate.

Wheat starch.

# Nozzle/Jet Options

---

Below is the suggested air jet and nozzle combination for an approximate abrasive flow. Refer to magazines, trade articles, professionals, and the abrasive manufacturer for the best combination that is required for your particular abrasive use.

#1	Air Jet Orifice Diameter:	5/64"
	Nozzle Orifice Diameter:	3/16"
	Abrasive Flow @ 60 PSI:	0.11 L/Min.
#2	Air Jet Orifice Diameter:	7/64"
	Nozzle Orifice Diameter:	13/64"
	Abrasive Flow @ 60 PSI:	0.18 L/Min.
#3	Air Jet Orifice Diameter:	1/8"
	Nozzle Orifice Diameter:	15/64"
	Abrasive Flow @ 60 PSI:	0.25 L/Min.
#4	Air Jet Orifice Diameter:	5/32"
	Nozzle Orifice Diameter:	9/32"
	Abrasive Flow @ 60 PSI:	0.36 L/Min.



# Notes

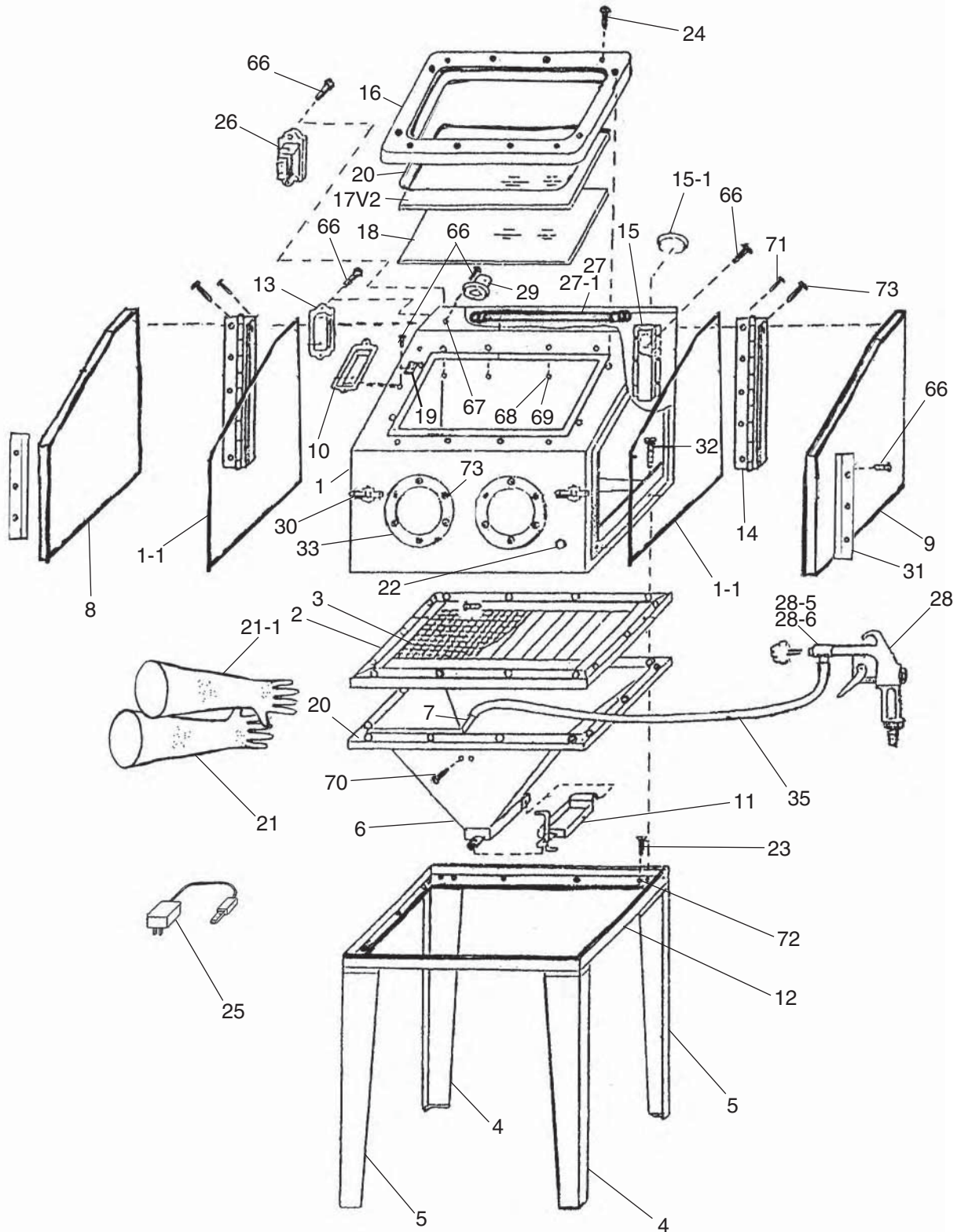
---

---



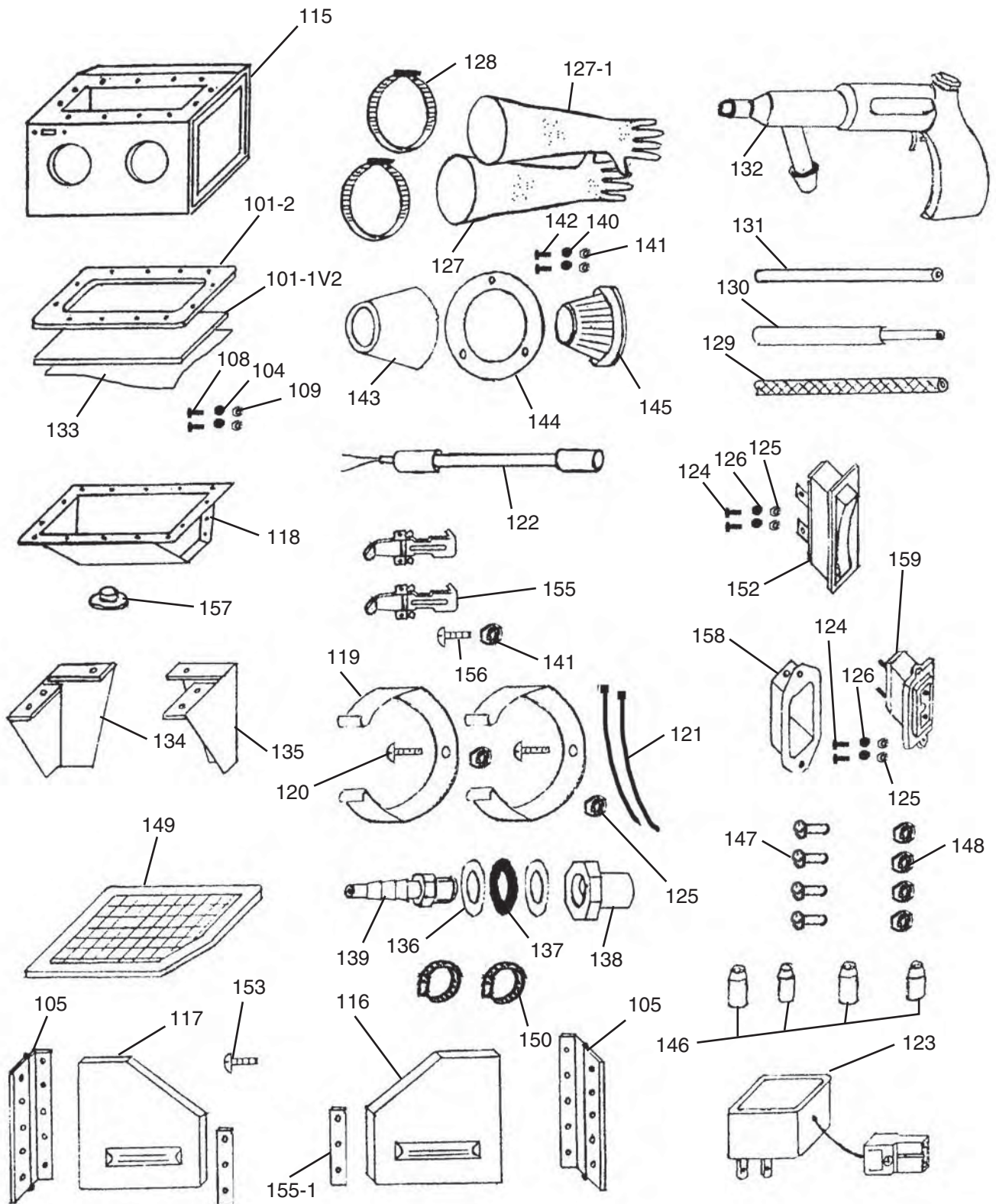
# SECTION 4: PARTS

## Parts Breakdown (G0472)





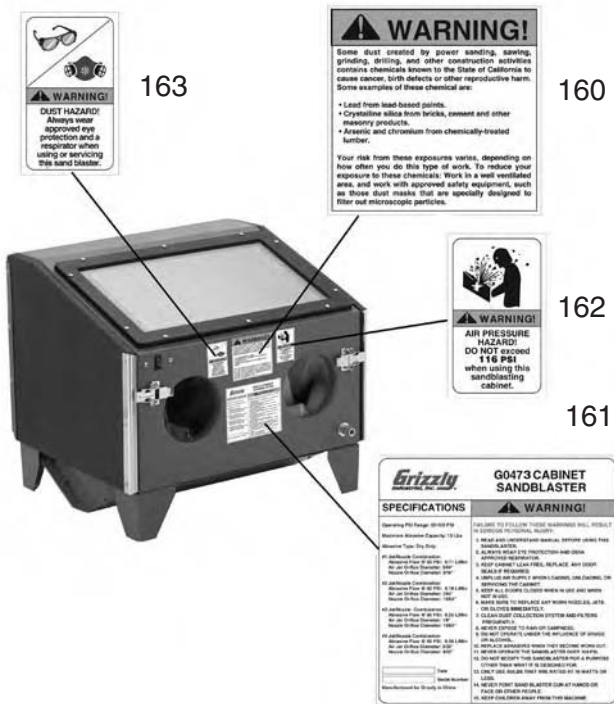
# Parts Breakdown (G0473)



# Parts List (G0473)

REF	PART #	DESCRIPTION
101	P0473101	WINDOW FRAME AND SEAL
101-1V2	P0473101-1V2	WINDOW GLASS V2.03.10
101-2	P0473101-2	WINDOW FRAME
101-3	P0473101-3	WINDOW SEAL
102	P0473102	KNOB
103	PN01M	HEX NUT M6-1
104	PW03M	FLAT WASHER 6MM
105	P0473105	HINGE
106	PHTEK15M	TAP SCREW M4 X 10
107	P0473107	CHAIN
108	PS14M	PHLP HD SCR M6-1 X 12
109	PN01M	HEX NUT M6-1
115	P0473115	CABINET
116	P0473116	DOOR-RIGHT
117	P0473117	DOOR-LEFT
118	P0473118	HOPPER
119	P0473119	LAMP CLAMP
120	PS38M	PHLP HD SCR M4-.7 X 10
121	P0473121	ZIP TIE
122	P0473122	COMPLETE LAMP ASSEMBLY
123	P0473123	AC/DC ADAPTER
124	PS38M	PHLP HD SCR M4-.7 X 10
125	PN04M	HEX NUT M4-.7
126	PW05M	FLAT WASHER 4MM
127	P0473127	GLOVE-RIGHT
127-1	P0473127-1	GLOVE-LEFT
128	P0473128	HOSE CLAMP
129	P0473129	PRESSURE SUPPLY HOSE
130	P0473130	SUCTION TUBE

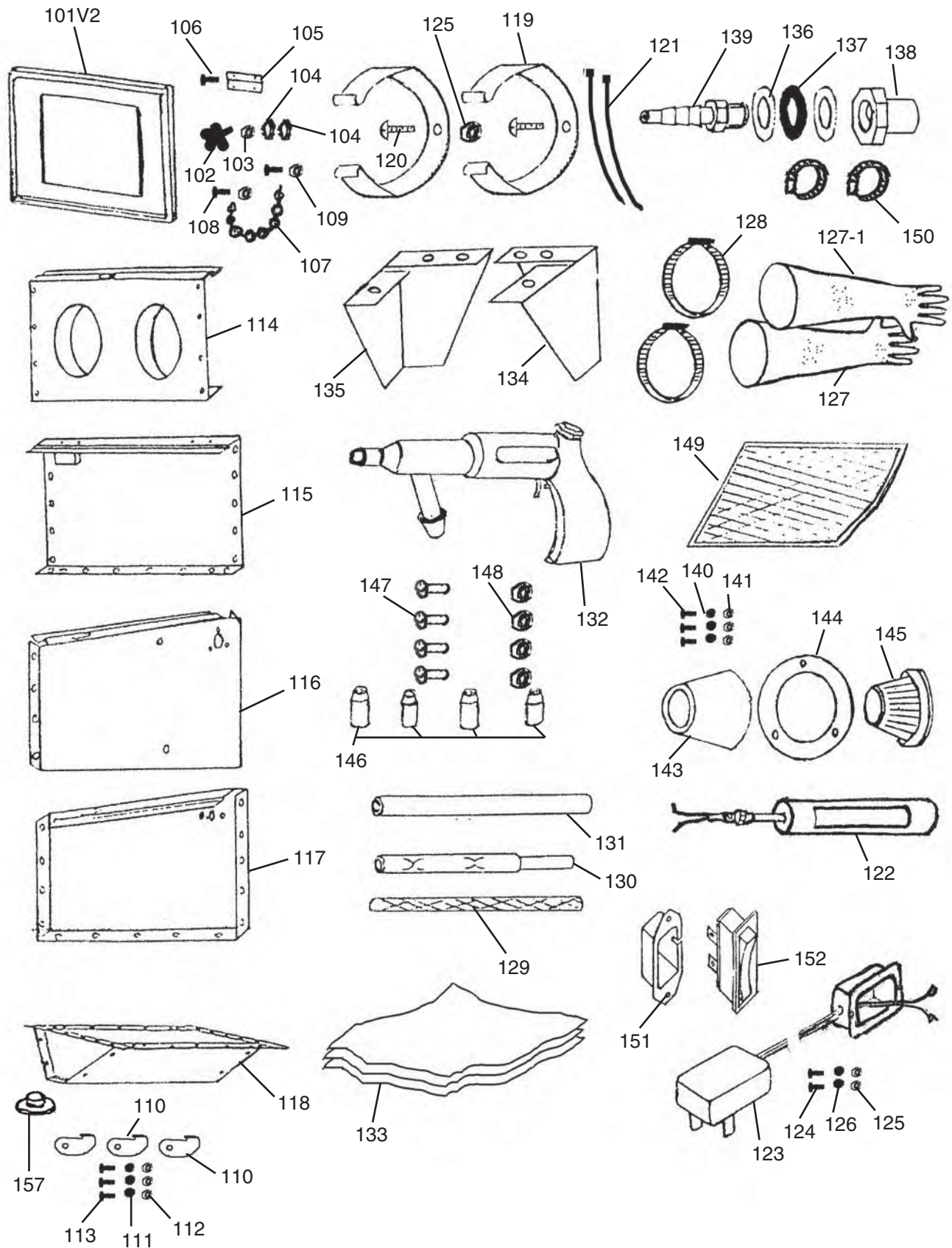
REF	PART #	DESCRIPTION
131	P0473131	SUCTION HOSE
132	P0473132	BLAST GUN
133	P0473133	CLEAR ADHESIVE FILM 4-PC
134	P0473134	SHORT LEG-LEFT
135	P0473135	SHORT LEG-RIGHT
136	P0473136	FLAT SPACER
137	P0473137	FLAT GASKET
138	P0473138	BULKHEAD FITTING
139	P0473139	HOSE NIPPLE
140	PW05M	FLAT WASHER 4MM
141	PN04M	HEX NUT M4-.7
142	PS38M	PHLP HD SCR M4-.7 X 10
143	P0473143	FOAM FILTER
144	P0473144	RING
145	P0473145	FILTER ELEMENT
146	P0473146	NOZZLE SET
147	P0473147	JET SET
148	P0473148	JET SEAL SET
149	P0473149	SCREEN
150	P0473150	HOSE CLAMP
151	P0473151	SWITCH HOUSING
152	P0473152	SWITCH
153	PHTEK18	TAP SCREW #10 X 5/8
155	P0473155	LATCH
155-1	P0473155-1	LATCH CATCH
156	PS38M	PHLP HD SCR M4-.7 X 10
157	P0473157	HOPPER PLUG
158	P0473158	RECEPTACLE COVER
159	P0473159	RECEPTACLE



REF	PART #	DESCRIPTION
160	P0472080	SAFETY WARNING LABEL
161	P0473161	MACHINE ID LABEL
162	P0472082	PSI LABEL 116 MAX
163	P0472083	DUST HAZARD LABEL



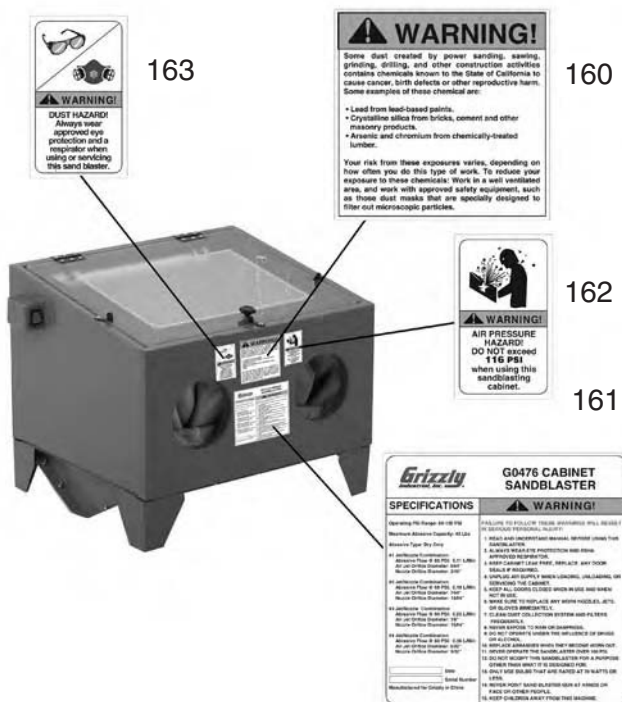
# Parts Breakdown (G0476)



# Parts List (G0476)

REF	PART #	DESCRIPTION
101V2	P0476101V2	WINDOW FRAME & GLASS V2.03.10
101-1V2	P0476101-1V2	WINDOW PLEXIGLASS V2.03.10
102	P0476102	KNOB
103	PN01M	HEX NUT M6-1
104	PW03M	FLAT WASHER 6MM
105	P0476105	HINGE
106	PHTEK15M	TAP SCREW M4 X 10
107	P0476107	CHAIN
108	PS14M	PHLP HD SCR M6-1 X 12
109	PN01M	HEX NUT M6-1
110	P0476110	LOCK LEVER
111	PW03M	FLAT WASHER 6MM
112	PLN03M	LOCK NUT M6-1
113	PS14M	PHLP HD SCR M6-1 X 12
114	P0476114	PANEL-FRONT
115	P0476115	PANEL-REAR
116	P0476116	PANEL-RIGHT
117	P0476117	PANEL-LEFT
118	P0476118	HOPPER
119	P0476119	LAMP CLAMP
120	PS38M	PHLP HD SCR M4-.7 X 10
121	P0476121	ZIP TIE
122	P0476122	COMPLETE LAMP ASSEMBLY
123	P0476123	AC/DC ADAPTER
124	PS38M	PHLP HD SCR M4-.7 X 10
125	PN04M	HEX NUT M4-.7
126	PW05M	FLAT WASHER 4MM
127	P0476127	GLOVE-RIGHT
127-1	P0476127-1	GLOVE-LEFT
128	P0476128	HOSE CLAMP

REF	PART #	DESCRIPTION
129	P0476129	PRESSURE SUPPLY HOSE
130	P0476130	SUCTION TUBE
131	P0476131	SUCTION HOSE
132	P0476132	BLAST GUN
133	P0476133	CLEAR ADHESIVE FILM 4-PC
134	P0476134	SHORT LEG-LEFT
135	P0476135	SHORT LEG-RIGHT
136	P0476136	FLAT SPACER
137	P0476137	FLAT GASKET
138	P0476138	BULKHEAD FITTING
139	P0476139	HOSE NIPPLE
140	PW05M	FLAT WASHER 4MM
141	PN04M	HEX NUT M4-.7
142	PS38M	PHLP HD SCR M4-.7 X 10
143	P0476143	FOAM FILTER
144	P0476144	RING
145	P0476145	FILTER ELEMENT
146	P0476146	NOZZLE SET
147	P0476147	JET SET
148	P0476148	JET SEAL SET
149	P0476149	SCREEN
150	P0476150	HOSE CLAMP
151	P0476151	SWITCH HOUSING
152	P0476152	SWITCH
153	PHTEK18	TAP SCREW #10 X 5/8
155	P0476155	LATCH
155-1	P0476155-1	LATCH CATCH
156	PS38M	PHLP HD SCR M4-.7 X 10
157	P0476157	HOPPER PLUG



REF	PART #	DESCRIPTION
160	P0472080	SAFETY WARNING LABEL
161	P0476161	MACHINE ID LABEL
162	P0472082	PSI LABEL 116 MAX
163	P0472083	DUST HAZARD LABEL



# WARRANTY AND RETURNS

---

Grizzly Industrial, Inc. warrants every product it sells for a period of **1 year** to the original purchaser from the date of purchase. This warranty does not apply to defects due directly or indirectly to misuse, abuse, negligence, accidents, repairs or alterations or lack of maintenance. This is Grizzly's sole written warranty and any and all warranties that may be implied by law, including any merchantability or fitness, for any particular purpose, are hereby limited to the duration of this written warranty. We do not warrant or represent that the merchandise complies with the provisions of any law or acts unless the manufacturer so warrants. In no event shall Grizzly's liability under this warranty exceed the purchase price paid for the product and any legal actions brought against Grizzly shall be tried in the State of Washington, County of Whatcom.

We shall in no event be liable for death, injuries to persons or property or for incidental, contingent, special, or consequential damages arising from the use of our products.

To take advantage of this warranty, contact us by mail or phone and give us all the details. We will then issue you a "Return Number," which must be clearly posted on the outside as well as the inside of the carton. We will not accept any item back without this number. Proof of purchase must accompany the merchandise.

The manufacturers reserve the right to change specifications at any time because they constantly strive to achieve better quality equipment. We make every effort to ensure that our products meet high quality and durability standards and we hope you never need to use this warranty.

Please feel free to write or call us if you have any questions about the machine or the manual.

Thank you again for your business and continued support. We hope to serve you again soon.





# WARRANTY CARD

Name \_\_\_\_\_  
 Street \_\_\_\_\_  
 City \_\_\_\_\_ State \_\_\_\_\_ Zip \_\_\_\_\_  
 Phone # \_\_\_\_\_ Email \_\_\_\_\_ Invoice # \_\_\_\_\_  
 Model # \_\_\_\_\_ Order # \_\_\_\_\_ Serial # \_\_\_\_\_

The following information is given on a voluntary basis. It will be used for marketing purposes to help us develop better products and services. **Of course, all information is strictly confidential.**

1. How did you learn about us?

Advertisement                       Friend                       Catalog  
 Card Deck                               Website                       Other:

2. Which of the following magazines do you subscribe to?

<input type="checkbox"/> Cabinetmaker & FDM	<input type="checkbox"/> Popular Science	<input type="checkbox"/> Wooden Boat
<input type="checkbox"/> Family Handyman	<input type="checkbox"/> Popular Woodworking	<input type="checkbox"/> Woodshop News
<input type="checkbox"/> Hand Loader	<input type="checkbox"/> Precision Shooter	<input type="checkbox"/> Woodsmith
<input type="checkbox"/> Handy	<input type="checkbox"/> Projects in Metal	<input type="checkbox"/> Woodwork
<input type="checkbox"/> Home Shop Machinist	<input type="checkbox"/> RC Modeler	<input type="checkbox"/> Woodworker West
<input type="checkbox"/> Journal of Light Cont.	<input type="checkbox"/> Rifle	<input type="checkbox"/> Woodworker's Journal
<input type="checkbox"/> Live Steam	<input type="checkbox"/> Shop Notes	<input type="checkbox"/> Other:
<input type="checkbox"/> Model Airplane News	<input type="checkbox"/> Shotgun News	
<input type="checkbox"/> Old House Journal	<input type="checkbox"/> Today's Homeowner	
<input type="checkbox"/> Popular Mechanics	<input type="checkbox"/> Wood	

3. What is your annual household income?

\$20,000-\$29,000                       \$30,000-\$39,000                       \$40,000-\$49,000  
 \$50,000-\$59,000                       \$60,000-\$69,000                       \$70,000+

4. What is your age group?

20-29                                       30-39                                       40-49  
 50-59                                       60-69                                       70+

5. How long have you been a woodworker/metalworker?

0-2 Years                       2-8 Years                       8-20 Years                       20+ Years

6. How many of your machines or tools are Grizzly?

0-2                       3-5                       6-9                       10+

7. Do you think your machine represents a good value?       Yes                       No

8. Would you recommend Grizzly Industrial to a friend?       Yes                       No

9. Would you allow us to use your name as a reference for Grizzly customers in your area?

**Note: We never use names more than 3 times.**       Yes                       No

10. Comments: \_\_\_\_\_  
 \_\_\_\_\_  
 \_\_\_\_\_  
 \_\_\_\_\_

CUT ALONG DOTTED LINE

FOLD ALONG DOTTED LINE

\_\_\_\_\_  
\_\_\_\_\_  
\_\_\_\_\_



Place  
Stamp  
Here



**GRIZZLY INDUSTRIAL, INC.**  
P.O. BOX 2069  
BELLINGHAM, WA 98227-2069



FOLD ALONG DOTTED LINE

Send a Grizzly Catalog to a friend:

Name \_\_\_\_\_  
Street \_\_\_\_\_  
City \_\_\_\_\_ State \_\_\_\_\_ Zip \_\_\_\_\_

TAPE ALONG EDGES--PLEASE DO NOT STAPLE